

LATITUDE 40° 27' 30"



LONGITUDE 80° 32' 30"

7'5 OGIS topo location

7.5' LOC 0.06 S 15' LOC \_\_\_\_\_  
0.18 W (calc.) \_\_\_\_\_

Company Kings Creek Oil & Gas Co

Farm LINA M. Forster 9

Quad WEIRTON 7 1/2'

County HANCOCK

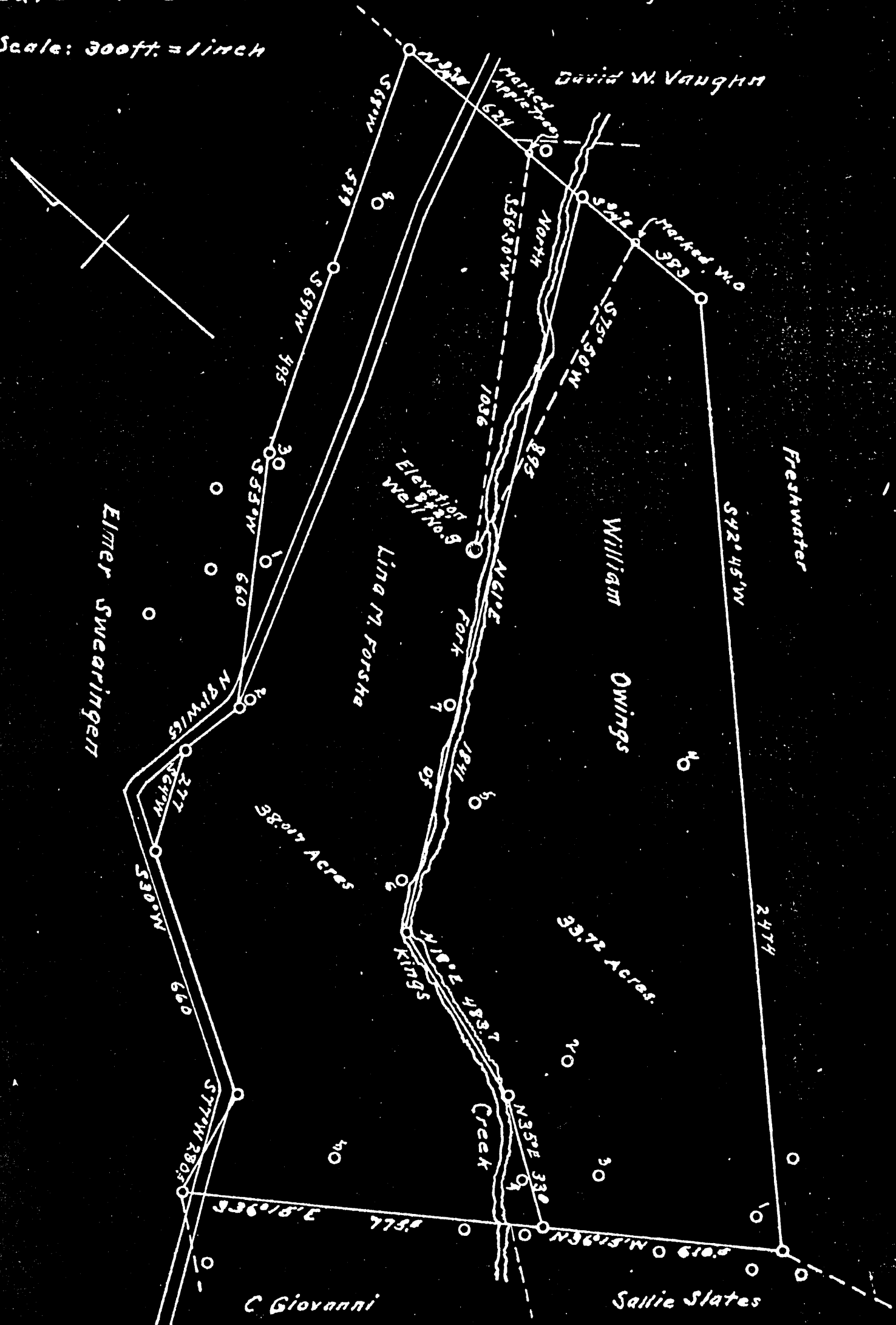
District BUTLER

WELL LOCATION MAP

File No. 029-0004

Plot of the Proposed Location of Well No. 9 of the Kings Creek Oil & Gas Co. of Weirton on the Lina M. Forsha Farm, Consisting of 38.07 Acres, Also William Owings Farm, Consisting of 33.72 Acres, Located in Butler District Hancock County.

Scale: 300ft. = 1 inch



I, the undersigned, hereby certify that this map is correct and shows all the information to the best of my knowledge and belief, required by the oil and gas section of the Mining Laws of West Virginia.  
 T. W. Lindinger, Co. Surveyor.

# WEST VIRGINIA DEPARTMENT OF MINES

## OIL AND GAS DIVISION

### PRELIMINARY DATA SHEET NO. 1

File No. \_\_\_\_\_ Well No. 9  
Kings Creek Oil # Gas Co. Company of Halliday Coe  
Newton W. Va.  
 on the Lina Forsha Farm  
 containing 38 acres. Location Kings Creek  
Butler District, in Hancock County, West Virginia

The surface of the above tract is owned in fee by Lina Forsha  
 of Newton W. Va. address, and the mineral rights are owned by  
 \_\_\_\_\_ of \_\_\_\_\_

The oil and gas privileges are held under lease by the above named company, and this well is drilled under permit  
 No. Han-4 issued by the West Virginia Department of Mines, Oil and Gas Division  
August 29 1935.

Elevation of surface at top of well, 842 Spirit Barometric.

The number of feet of the different sized casings used in the well.

10 feet 16 X 16 size. Wood conductor.  
55 feet 10 1/4 size, csg. 500 feet 8 1/4 sized csg.  
 \_\_\_\_\_ feet \_\_\_\_\_ size, csg. \_\_\_\_\_ feet \_\_\_\_\_ sized csg.  
 \_\_\_\_\_ feet \_\_\_\_\_ size, csg. \_\_\_\_\_ feet \_\_\_\_\_ sized csg.

\_\_\_\_\_ packer of \_\_\_\_\_ size, set at \_\_\_\_\_  
 \_\_\_\_\_ packer of \_\_\_\_\_ size, set at \_\_\_\_\_  
 \_\_\_\_\_, in casing perforated at \_\_\_\_\_ feet to \_\_\_\_\_ feet.  
 \_\_\_\_\_, in casing perforated at \_\_\_\_\_ feet to \_\_\_\_\_ feet.

Coal was encountered at \_\_\_\_\_ feet, thick ness \_\_\_\_\_ inches, and at \_\_\_\_\_  
 feet; thickness \_\_\_\_\_ inches; and at \_\_\_\_\_ feet; thickness \_\_\_\_\_ inches.

Liners were used as follows: (Give details) \_\_\_\_\_  
 \_\_\_\_\_  
 \_\_\_\_\_  
 \_\_\_\_\_

Date. \_\_\_\_\_  
 Approved Kings Creek Oil # Gas Co., Owner.  
 By E. M. Phillips Sec - Treas



Han-4

Kings Creek Oil & Gas Company  
 Holliday Cove, W. Va. Address  
 Well No. 90

COMPLETION DATA SHEET  
 No. 2  
 FORMATION RECORD

Name	Color	Character	Oil, Gas or Water	Top	Bottom	Thickness	Total Depth	Remarks
Gravel	Brown	Runny	Water	0	55	55	55	
Shale	Brown	Hard		55	155	100	155	
Slate	Black	Soft	Water	155	235	80	235	
lurry up	Brown	Hard		235	335	100	335	55'-10
Slatte	Black	Soft		335	410	75	410	
Salt Sand	Brown	Hard		410	490	80	490	
Slate	Black	Soft		490	595	105	595	500'-8 1/4
ngine Sand	Dark	Hard		595	628	33	628	
Slate	Black	Soft		628	905	277	905	
rea Stray	Brown	Hard		905	945	40	945	
Slate	Black	Soft	sew	945	1028	83	1028	
rea Grit	Black	Hard	oil	1028	1068	40	1068	
Slate	Gray	Soft		1068	1138	70	1138	
ed Rock	Black	Soft		1138	1220	82	1220	
soft Sand	Red	Soft		1220	1223	3	1223	
Slate	Brown	Hard		1223	1357	134	1357	
ordon Stray	Black	Soft		1357	1377	20	1377	
Slate	Dark	Hard		1377	1477	100	1477	
ordon	Black	Soft		1477	1495	18	1495	
Slate	Dark	Hard		1495	1652	157	1652	
ourth Sand	Black	Soft		1652	1682	30	1682	
Slate	Gray	Hard		1682	1707	25	1707	
fifth Sand	Black	Soft		1707	1747	40	1747	
Slate	Dark	Hard		1747	2122	375	2122	Shelly
c. Warren	Black	Hard		2122	2172	50	2172	
hale	Dark	Soft		2172	2292	120	2292	
peckley Stray	Brown	Hard		2292	2312	20	2312	
hale	Dark	Soft		2312	2385	73	2385	
peckley	Brown	Hard		2385	2505	120	2505	Limey
Slate	Dark	Soft		2505	2510	5	2510	

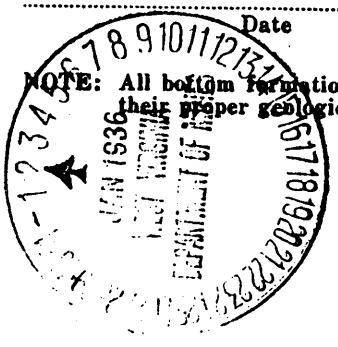
shot  
 Well was not shot at ..... feet; well was shot at ..... feet.

~~Salt~~ salt  
 Fresh water at 155 ..... feet; fresh water at ..... feet.

producing  
 Well was ..... hole.  
 dry

Approved Kings Creek Oil & Gas Co.  
 Owner

Date



NOTE: All bottom formations must be noted as indicated above and all key-rocks and oil and gas sands must be recorded under their proper geological names in the district as well as any local names commonly used in the district for such strata.