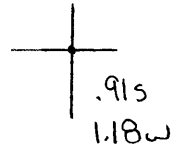


40°27'30"

Latitude

80°32'30"

Longitude



Topo Location

7.5' Loc. _____ 15' Loc. _____
_____ (calc.) _____

Company WJ Hudson

Farm Food Worker #14

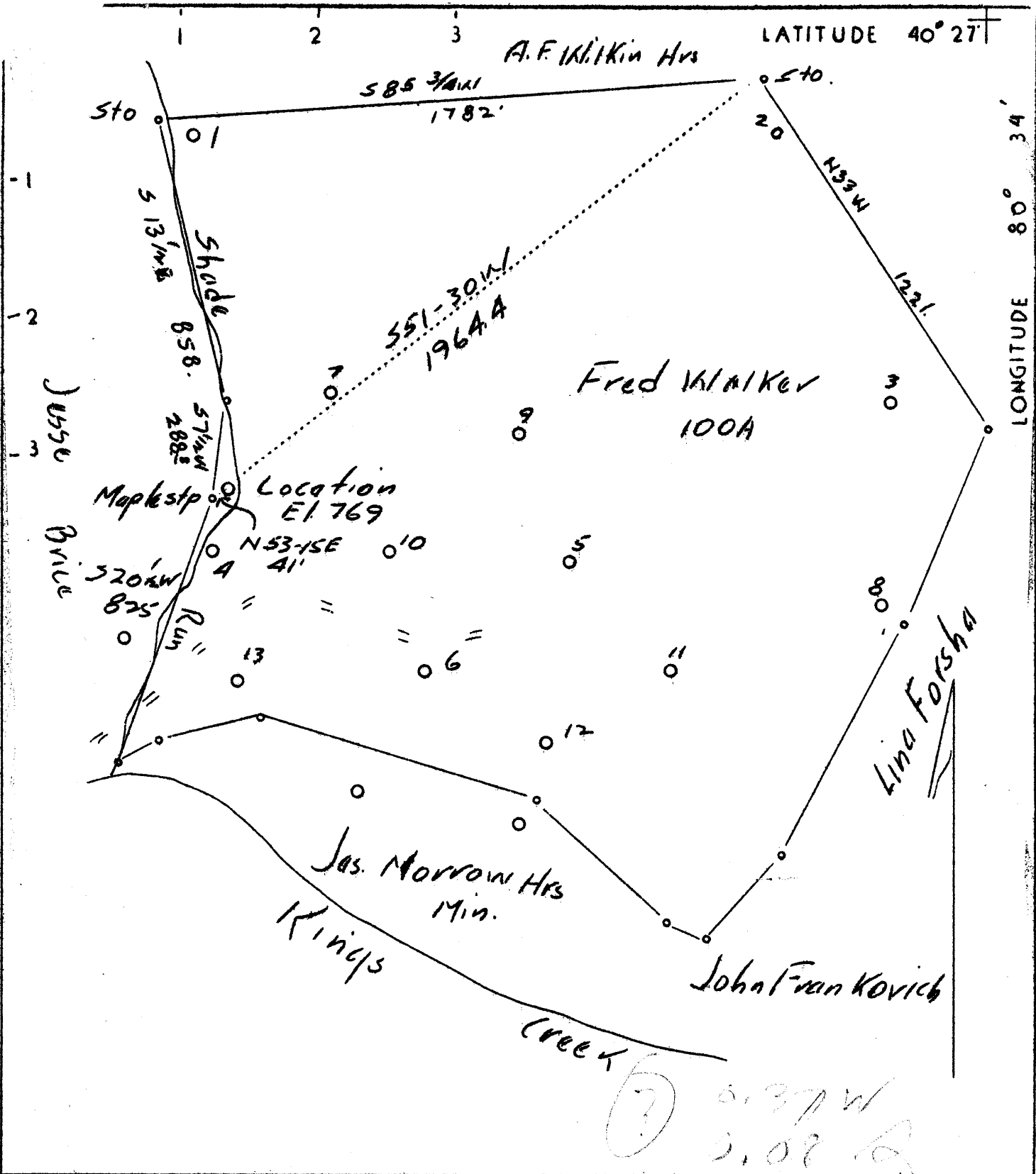
15' Quad _____
(sec.)

7.5' Quad Wenton

District Butler

WELL LOCATION PLAT

County 029 **Permit** 7



Company	W. J. Hudson
Address	R.F.D. No. 1, Weirton, W. Va.
Farm	Fred Walker Cable & Brice
Tract	1 Acres 100 Lease No.
Well (Farm) No.	14 Serial No.
Quadrangle	Steubenville
County	Hancock District Butler
Engineer	Chas. J. Taltentbach
Engineer's Registration No.	314
File No.	Drawing No.
Date	June 17, 1937
Scale	1"=400'

STATE OF WEST VIRGINIA
 Department of Mines
 OIL AND GAS DIVISION
 CHARLESTON

WELL LOCATION MAP

File No. HAN-7

+ Denotes location of well on United States Topographic Maps, scale 1 to 62,500, latitude and longitude lines being represented by border lines as shown.

— Denotes one inch spaces on border line of original tracing.

WEST VIRGINIA DEPARTMENT OF MINES

OIL AND GAS DIVISION

W E L L R E C O R D

Permit No. Han-7

Oil Well

Steubenville Quad.

C A S I N G & T U B I N G

Company	W.J.Hudson	6 $\frac{1}{2}$ "	415
Address	Weirton, W.Va., R.D.#1	2	1020
Farm	Cable & Brice Acres 100		
Location	Kings Creek		
Well No.	1		
District	Butter	Elev. 789'	
Surface	F.C.Walker, Weirton, W.Va.		
Mineral	Nannie Cable, Toronto, Ohio & Dala Harsha, Darlington, Pa.		
Drilling	Commenced August		
	Completed September		
Date Shot	Sept. 21	Depth 979'	
Volume	Very little gas		
Rock Press.			Coal was encountered at 116'
Oil	About 5 bbls., 1st 24 hrs.		

P A C K E R

None

Perf. bottom 1000

Formation	Color	Hor	TOP	Base	Result	Formation	Color	Hor	TOP	Base	Result
Hurry Up S.	Dark	H	6	116	Water						
Fire Clay			119	130							
Salt Sand		H	320	400							
Big Injun		H	510	645							
Berea	White		976	1005	Oil						
TOTAL DEPTH				1021							