

40°37'30"

Latitude

Longitude

80°37'30"

2.53s
.87w

Topo Location

7.5' Loc. _____ 15' Loc. _____
_____ (calc.) _____

Company RJ Bradem Co

Farm CE Brenneman #57

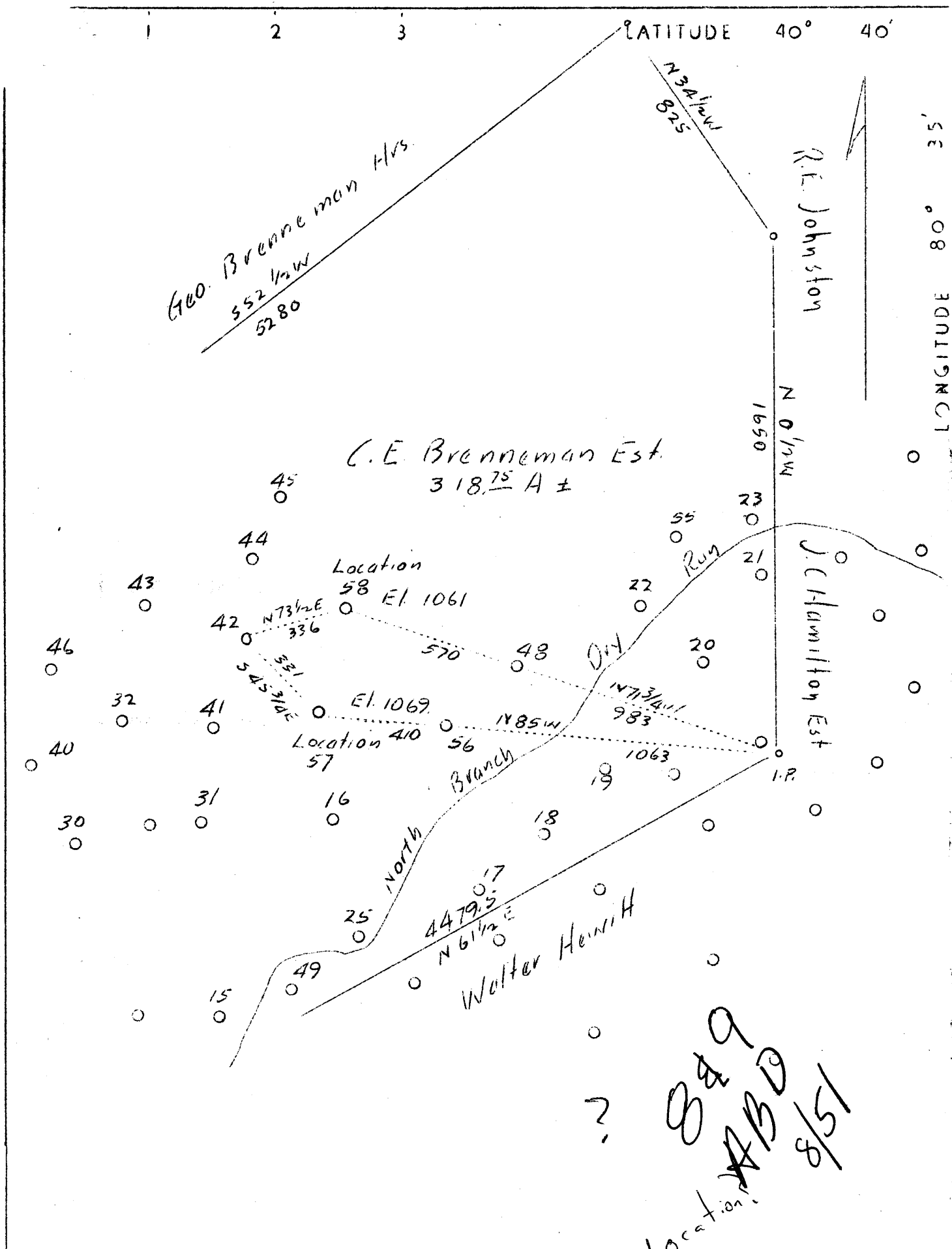
15' Quad _____
(sec.)

7.5' Quad Wellsville

District Grant

WELL LOCATION PLAT

County 029 Permit 8



Company	R.J. Braden Co.
Address	Chester, W. Va.
Farm	C.E. Brenneman Estate
Tract	1 Acres 318.75 Lease No.
Well (Farm) No.	57 & 58 Serial No.
Quadrangle	Wellsville
County	Hancock
District	Grant
Engineer	Chas. J. Kalteubach
Engineer's Registration No.	314
File no.	Drawing No. 1
Date	Oct. 15, 1937 Scale 1"=400'

STATE OF WEST VIRGINIA
 Department of Mines
 OIL AND GAS DIVISION
 CHARLESTON

WELL LOCATION MAP
 File No. HAN-849

+ Denotes location of well on United States Topographic Maps, scale 1 to 62,500, latitude and longitude lines being represented by border lines as shown.

— Denotes one inch spaces on border line of original tracing.

WEST VIRGINIA DEPARTMENT OF MINES

OIL AND GAS DIVISION

WELL RECORD

Permit No. Han 8

Oil Well

Wellsville Quad.

CASING & TUBING

Company	R.J. Braden Co.	6 $\frac{1}{4}$ "	705	705
Address	442 Indiana Ave., Chester			
Farm	G.G. Brenneman	Acres 318		
Location	Dry Run			
Well No.	57	Elev. 1069		
District	Grant	County Hancock		
Surface	Mrs. A.E. Mahan, New Cumberland R.D. 4			
Mineral	Same			
Drilling	Commenced Oct. 25, 1937			
	Completed Nov. 3, 1937			
Date Shot	Nov. ? Depth 1007-1019			
Oil	4 bbls. ,1st 24 hrs.			

Formation Color					Formation Color						
	Color	Hor	Top	Base	Result		Color	Hor	Top	Base	Result
Mud			0	10							
Lime	Dark		10	20							
Slate	White	S	20	75							
Slate	Black	S	75	140							
Mud	Red	S	140	150							
Clay	White	S	150	190							
Slate	Grey	S	190	255							
Sand	White	H	255	280							
Slate	White	S	280	335							
Lime	Grey	H	335	405							
Sand	Brown	Solid	405	490							
Slate	White	S	490	500							
Sand	Blue	H	500	550							
Slate	White	S	550	570							
Slate	Black	S	570	583							
Slate	Brown	S	583	589							
Lime	Dark	H	589	605							
Slate	Brown	S	605	629	Water						
Sand	White	H	629	643	690'						
Slate	Grey		643	685	Sm. Amount						
Sand	White	H	685	700							
Lime	Black	H	700	924							
Lime	Dark	H	924	965							
Slate	Black	S	965	1004							
Sand	White	H&S	1004	1021	Oil						

Figure 1. - Ownership map of Brenneman field, Hancock County, W. Va., showing location and status of wells on December 31, 1948.

