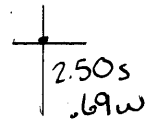


40°37'30"

Latitude

80°37'30"

Longitude



**Topo Location**

7.5' Loc. \_\_\_\_\_ 15' Loc. \_\_\_\_\_  
 \_\_\_\_\_ (calc.) \_\_\_\_\_

Company R.J. Braden Co

Farm CE Bremmerman #65

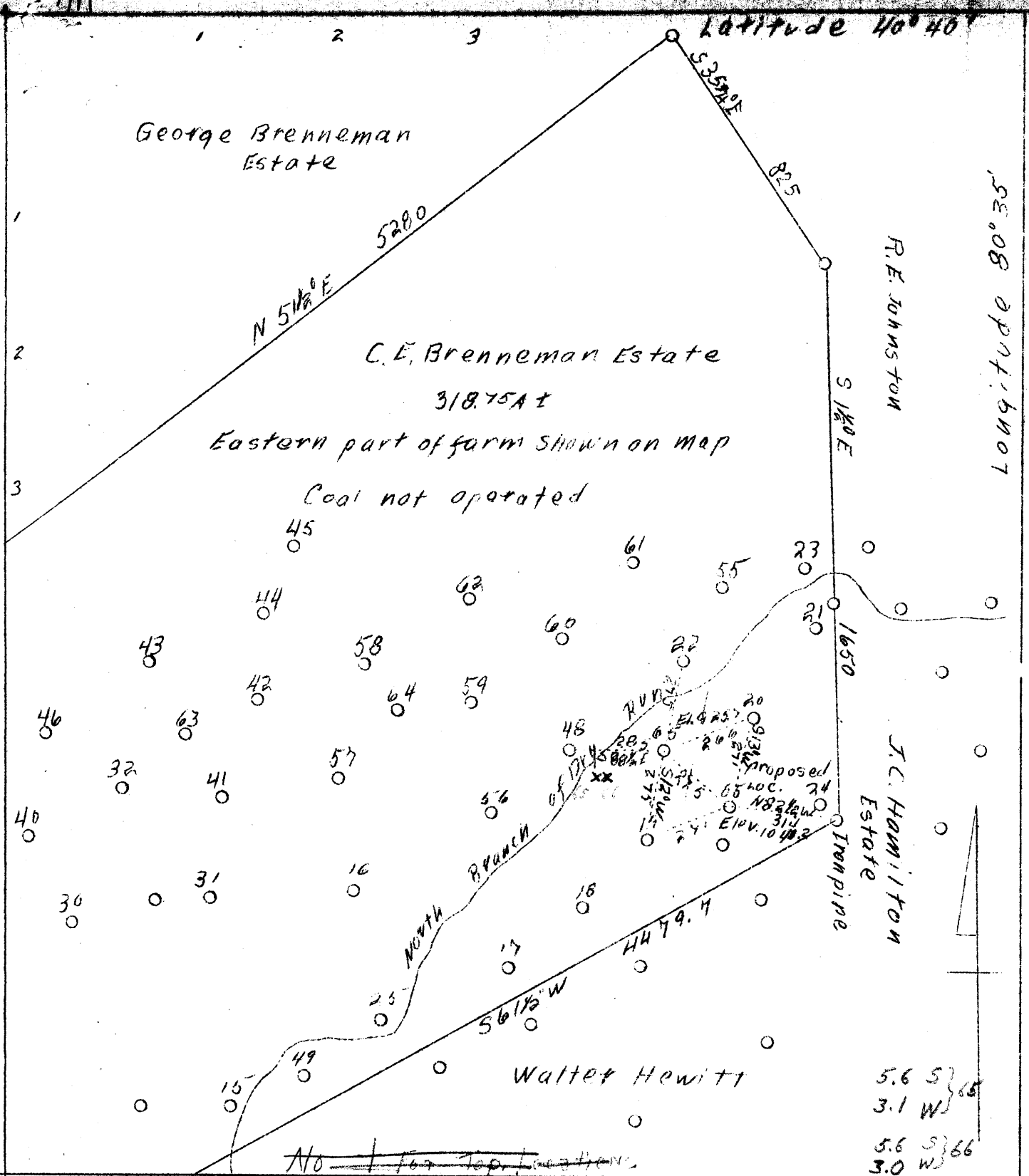
15' Quad \_\_\_\_\_  
(sec.)

7.5' Quad Wellsdale

District Grant

**WELL LOCATION PLAT**

County 029 Permit 16



Company R. J. Braden Co.  
 Address Chester, W. Va.  
 Farm C. E. Brenneman Estate  
 Tract One  
 Acres 318.75 plus  
 Well (Farm) No. 65 and 66  
 Elevation -  
 Quadrangle Wellsville  
 County Hancock  
 District Grant  
 Engineer Chas. J. Kaltenbach (?)  
 Eng. Reg. No. 314  
 Drawing No. Eight  
 Date July 28, 1938  
 Scale 1" = 400'

STATE OF WEST VIRGINIA  
 Department of Mines  
 OIL & GAS DIVISION  
 Charleston

WELL LOCATION MAP

File # Han-164/17

x Denotes location of well on U. S. Topographic Maps, scale 1 to 62,500, latitude and longitude lines being represented by border lines as shown.  
 - Denotes one inch spaces on border line of original tracing.

16417  
 ABD  
 -151

WEST VIRGINIA DEPARTMENT OF MINES

OIL & GAS DIVISION

WELL RECORD

Permit No. Han-16

Oil or gas Well -

Well'sville Quad.

CASING & TUBING

Company R. J. Braden Co.  
 Address 442 Indiana Ave., Chester, W. Va.  
 Farm G. G. Brenneman ACRES -  
 Location Dry Run  
 Well No. 65 ELEV. - 470  
 District Grant County Hancock  
 Surface Mrs. A. E. Mahon  
 Address N. Cumberland, R.D. #4  
 Mineral -  
 Drilling commenced Aug. 25 ?  
 Drilling completed Sept. 6 ?  
 Shot -  
 Open Flow -  
 Volume -  
 Rock Pressure -  
 Oil -  
 Water -

6-1/4 615

Formation Color <sup>Mar</sup>/<sub>5</sub> TOP Base Result Formation Color <sup>Mar</sup>/<sub>5</sub> TOP Base Result

Clay			0	135
Sand	white	h	135	165
Slate	blue	s	165	235
Sand	brown	h	235	315
Clay	white	s	315	342
Slate	grey	s	342	380
Lime Shells		h	380	495
Injun	white	h	495	515
Lime & Shells		fm	515	520
Sandy Lime	black	h	520	530
Sand	white	h	530	615
Slate	white	h	615	780
Sand		h	780	805
Slate	white		805	830
Shale	brown		830	850
Berea	blue		850	856-6
Pay			856-6	867
Bottom Hole			868-4	

Figure 1. - Ownership map of Brenneman field, Hancock County, W. Va., showing location and status of wells on December 31, 1948.

