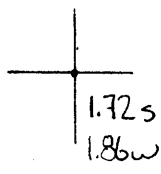


40°30'00"

Latitude

80°32'30"

Longitude



Topo Location

7.5' Loc. _____ 15' Loc. _____
(cale.) _____

Company Card Hamm

Farm George R Gago #2

15' Quad _____
(sec.)

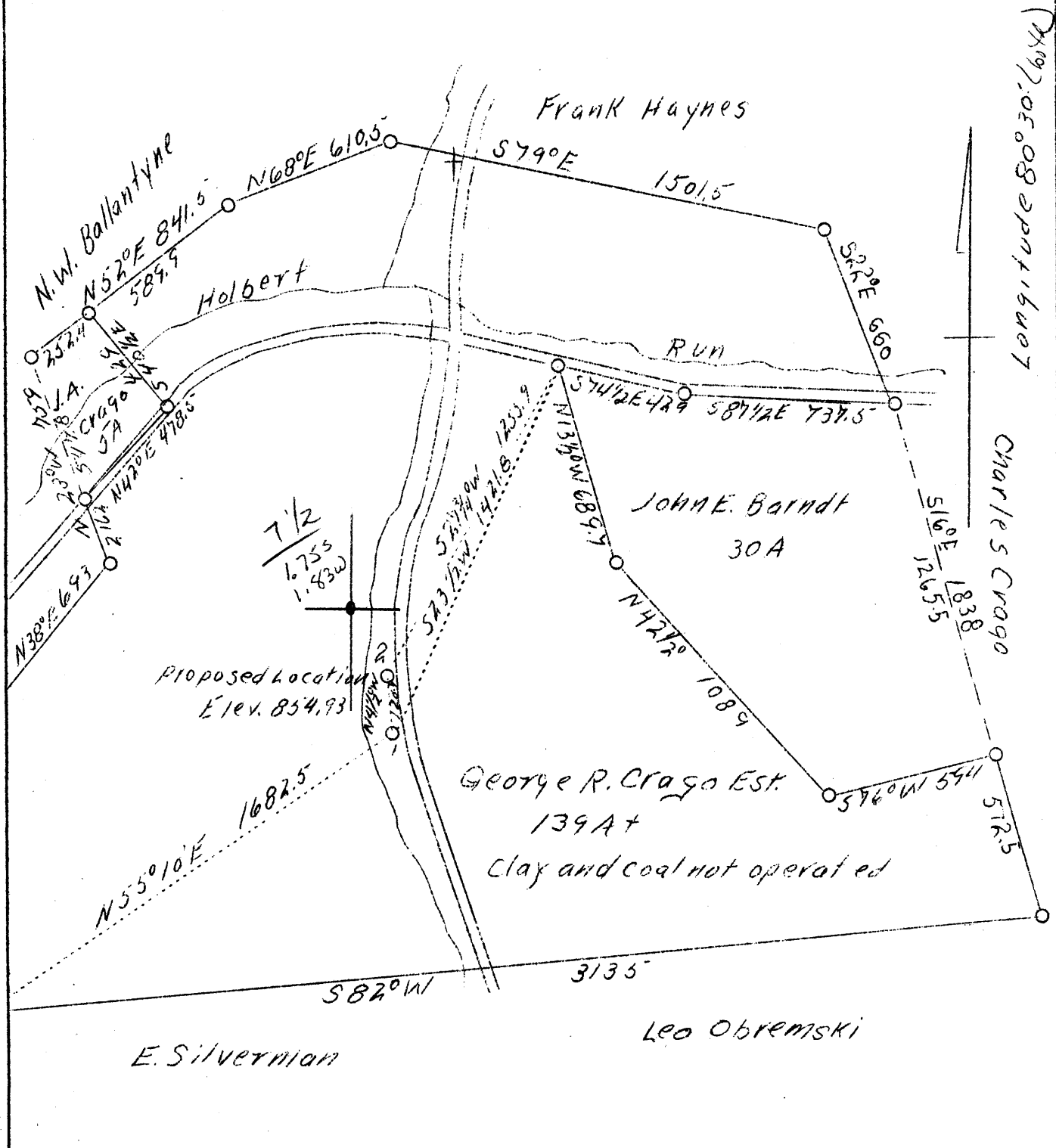
7.5' Quad Waxton

District Clay

WELL LOCATION PLAT

County 029 Permit 19

Latitude 40°30' (both)



Company	Carl Hahn
Address	New Cumberland, W. Va.
Farm	George R. Crago Estate
Tract	1
Acres	139 plus
Well (Farm) No.	2
Elevation	-
Quadrangle	Steubenville
County	Hancock
District	Clay
Engineer	W. Harold Ramp
Eng. Reg. No.	386
Drawing No.	Two
Date	May 22, 1939
Scale	1" - 500'

STATE OF WEST VIRGINIA
 Department of Mines
 OIL & GAS DIVISION
 Charleston

WELL LOCATION MAP

File No. Han. 19

x Denotes location of well on U. S. Topographic Maps, scale 1 to 62,500, latitude and longitude lines being represented by border lines as shown.

- Denotes one inch spaces on border line of original tracing.