

40° 32' 30"

7/2

Latitude

.045  
.48W

80° 35'

Longitude

Topo Location

7.5' Loc. .045 15' Loc. 2.92  
.48W (calc.) .48

Company John T Galey

Farm WV Conservation Commission

15' Quad Wellsville SC  
(sec.)

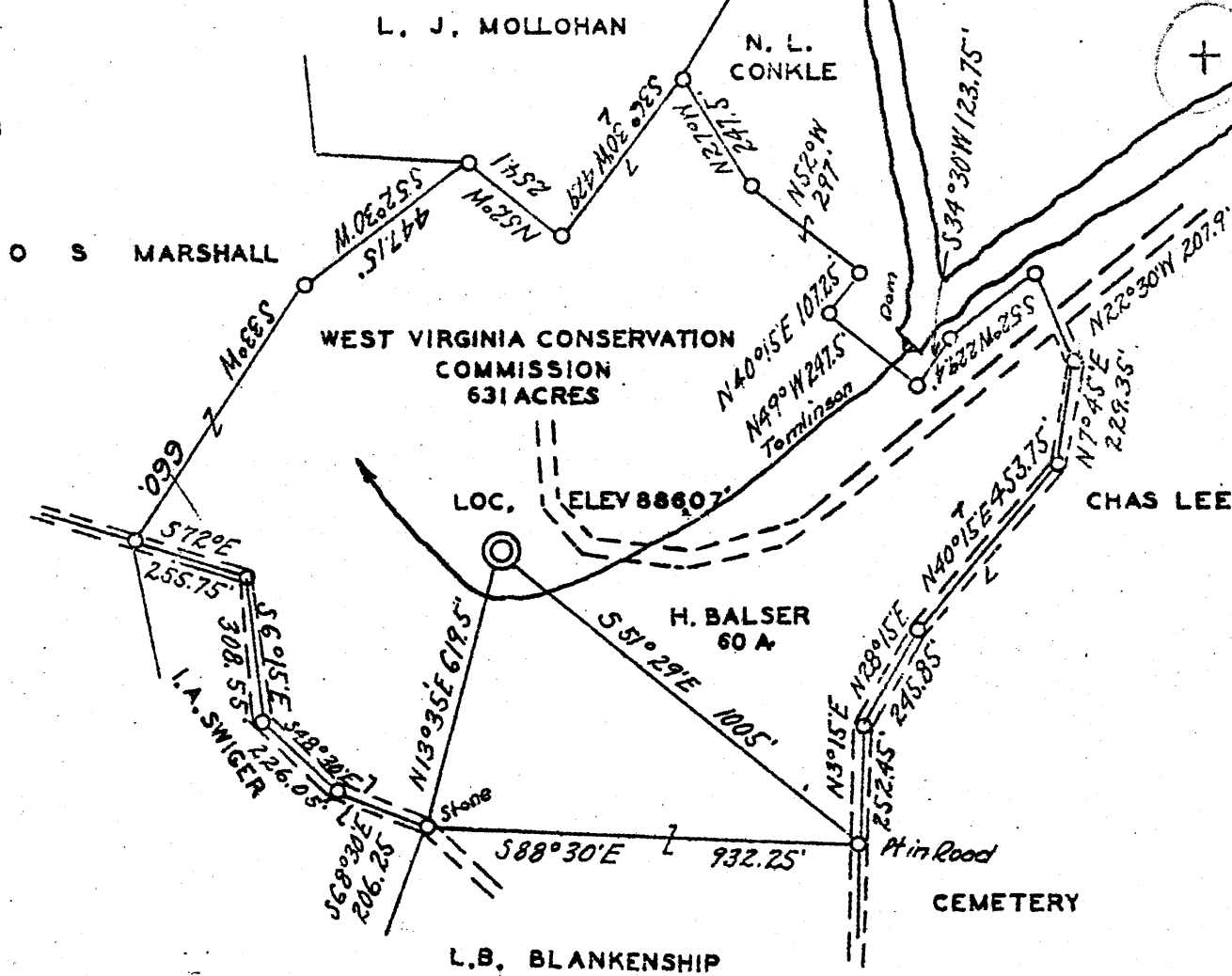
7.5' Quad E Liverpool South

District Clay

WELL LOCATION PLAT

County 029 Permit 45

2.825  
.53 W  
8 EC (A-9)



COAL OWNED BY WEST VIRGINIA CONSERVATION COMMISSION

- WELL LOCATION
- DRILL DEEPER
- ABANDONMENT

COMPANY JOHN T. GALEY  
 ADDRESS 2815 GRANT BLDG PITTSBURGH PA  
 FARM TOM LINSON PARK 631A LEASE  
 TRACT H. BALSER ACRES 60 LEASE NO. \_\_\_\_\_  
 WELL (FARM) NO. 1 SERIAL NO. \_\_\_\_\_  
 ELEVATION (SPIRIT LEVEL) 886.07'  
 QUADRANGLE WELLSVILLE - SC  
 COUNTY HANCOCK DISTRICT CLAY  
 ENGINEER Donald K. Bell  
 ENGINEER'S REGISTRATION NO. \_\_\_\_\_  
 FILE NO. \_\_\_\_\_ DRAWING NO. \_\_\_\_\_  
 DATE MAY 26 1944 SCALE 1" = 400'

STATE OF WEST VIRGINIA  
 DEPARTMENT OF MINES  
 OIL AND GAS DIVISION  
 CHARLESTON

WELL LOCATION MAP

FILE NO. HAN-45

+ DENOTES LOCATION OF WELL ON UNITED STATES TOPOGRAPHIC MAPS. SCALE 1 TO 62,500. LATITUDE AND LONGITUDE LINES BEING REPRESENTED BY BORDER LINES AS SHOWN.

○ DENOTES ONE INCH SPACES ON BORDER LINE OF ORIGINAL TRACING.

samples 12.5

6-0

0

Deep Well

WEST VIRGINIA DEPARTMENT OF MINES  
OIL & GAS DIVISION  
WELL RECORD

Permit No. Han 45  
Wellsville Quad.

Gas Well  
CASING & TUBING

Company	John T. Galey
Address	2615 Grant Bldg., Pittsburgh, Pa.
Farm	Conservation Commission of West Virginia
Location	Tomlinson Run Acres 766      13      16      16
Well No	1 Elev. 891 D.F.      10      382      382
District	Clay Hancock County      8½      768      None
Surface	Conservation Commission of W.Va., Charleston, W.Va.
Mineral	Same
Commenced	June 15, 1944
Completed	Aug. 26, 1944
Fresh Water	15-25'
Salt Water	4619-filled 250'

Sand & Gravel	0	15	
Sand Lt H	15	25	
Slate Dk	25	35	
✓ Coal	35	36	
Clay & Slate Lt	36	45	
Lime, Broken	45	318	
Sand, broken	318	335	
Slate	335	418	
Shells Gr	418	429	
Slate	429	480	
Shells, Lime	480	560	
Lime Shells & Hard Sand	560	571	
Slate	571	638	
Shells Gr	638	696	
✓ Slate Rk - <i>Copper Sh</i>	696	718	S.L.M.
✓ Sand Gr - <i>Berea</i>	718	767	Gas 724-728 Berea
Slate & Shells	767	892	
Slate Red	892	908	
Slate Gray	908	1027	
Shells	1027	1055	
Slate & Shells	1055	1086	
Slate Br	1086	1100	
Slate Gr	1100	1180	
Shells Lt	1180	1220	
Slate Gr	1220	1264	
Shells Lt	1264	1300	
Slate Gr	1300	1820	
Shells Br	1820	1841	
Slate Gr	1841	2006	
Shells	2006	2085	
Slate	2085	2150	
Lime Shells	2150	2325	
Slate	2325	2420	
Sandy Shells	2420	2440	
Slate	2440	2895	
Shale Br	3895	3930	Gas pocket 3961, 4243, 4250, 4274, 4354, ✓
Shale Rk	3930	4382	4356, 4362, 4370, 4374 blew out
Lime shell	4382	4385	
Shells Rk	4395	4398	
✓ Lime - <i>463</i>	4398	4604	Reduced hole 4604
✓ Sand <i>ORSK Wh</i>	4604	4619	Show oil 4615 ✓

475

Hole filled with red clay from 4619' to 4500'  
Pine plug and 20' cement at 4500'  
Red Clay 4500-4382'  
Wood plug and 20' cement at 4282'

4398	4604
891	891
-3507	-3713