

Latitude

40° 37' 30"

103, 73.08

Longitude

233s  
.17w

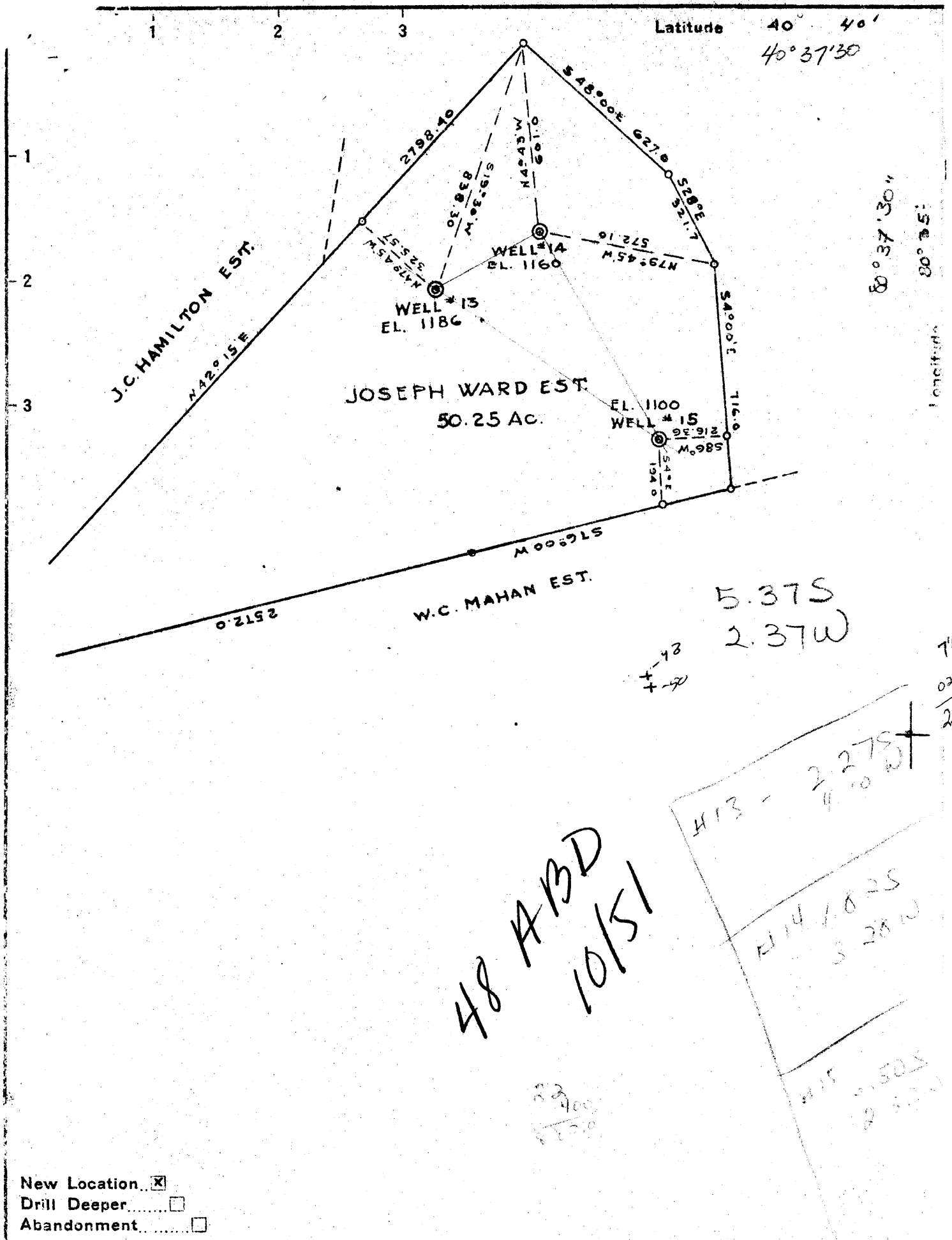
Topo Location

7.5' Loc. 215 15' Loc.             
           (calc.)           

Company Dunn-MAR 0.6  
Farm Joseph Ward #13  
15' Quad Wellsville C  
(sec.)  
7.5' Quad Wellsville 7 1/2  
District GRANT

WELL LOCATION PLAT

County 029 Permit 48



48 ABD  
10/51

5.37S  
2.37W  
7/2  
029-48  
2245  
-110

H13 - 2.27S  
4.10W

H14 1.82S  
3.28W

H15 1.50S  
2.37W

New Location   
 Drill Deeper   
 Abandonment

Company DUNN-MAR OIL & GAS CO  
 Address 260 W. WAYNE ST. WAYNESBURG PENNA  
 Farm JOSEPH WARD  
 Tract \_\_\_\_\_ Acres 50.25 Lease No. \_\_\_\_\_  
 Well (Farm) No. 13-14-15 Serial No. \_\_\_\_\_  
 Elevation (Spirit Level) \_\_\_\_\_  
 Quadrangle WELLSVILLE  
 County HANCOCK District GRANT  
 Engineer Frank Lepora  
 Engineer's Registration No. 112A  
 File No. \_\_\_\_\_ Drawing No. \_\_\_\_\_  
 Date 6/13/45 Scale 1" = 400'

STATE OF WEST VIRGINIA  
 DEPARTMENT OF MINES  
 OIL AND GAS DIVISION  
 CHARLESTON

**WELL LOCATION MAP**

FILE NO HAN-48-13 ✓  
HAN-49-714  
HAN-50-15

+ Denotes location of well on United States Topographic Maps, scale 1 to 62,500, latitude and longitude lines being represented by border lines as shown.  
 - Denotes one inch spaces on border line of original tracing.

WEST VIRGINIA DEPARTMENT OF MINES  
OIL & GAS DIVISION  
W E L L R E C O R D

Permit No. Han 48  
Wellsville Quad.  
Company  
Address  
Farm  
Location  
Well No.  
District  
Surface  
Mineral  
Commenced  
Completed  
Open flow  
Volume  
Oil

Dunn-Mar Oil & Gas Co.  
Waynesburg, Pa.  
J.C. Ward      Acres  
  
13      Elev. 1186  
Grant      Hancock County  
  
Aug. 6, 1945  
Aug 31, 1945  
1/10ths W in 1"  
12000 C.F.  
Show

Gas Well  
CASING & TUBING

8 $\frac{1}{2}$	44	44
6 $\frac{1}{4}$	835	835

Hurry Up Sand	270	270	
Break	305		
Broken Sand	390	400	
Salt Sand	680	700	
Big Injun Sand	765	830	
Stray Sand	975	1050	
Berea Sand	1077 $\frac{1}{2}$	1145	
Oil-show	1080	1082	
Gas- 1/10 W 1"	1097	1098	
100' Sand	1250	1254	
Oil-show	1252		
 TOTAL DEPTH			 1352

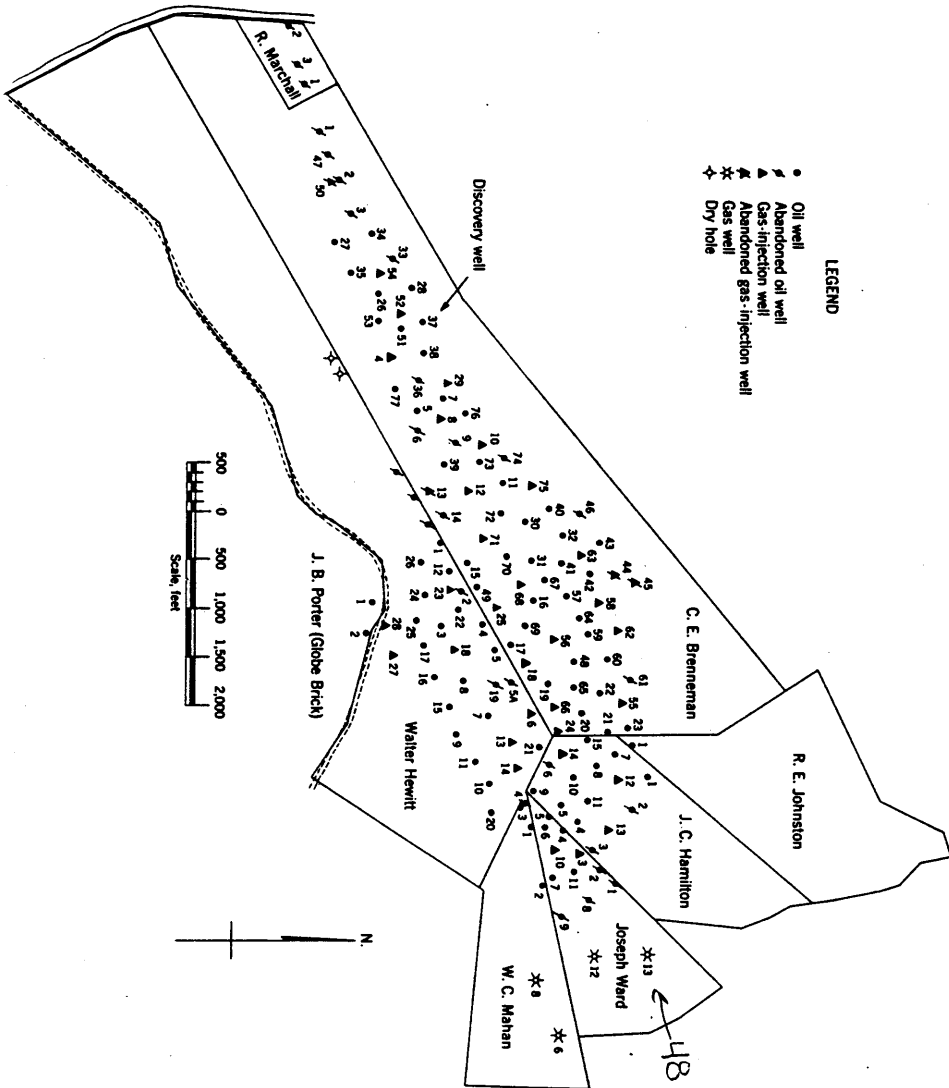


Figure 1. - Ownership map of Breneman field, Hancock County, W. Va., showing location and status of wells on December 31, 1948.