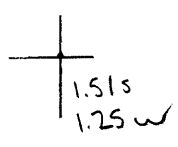


40°30'00"

Latitude

80°30'00"

Longitude



Topo Location

7.5' Loc. _____ 15' Loc. _____
 _____ (calc.) _____

Company FM Anderson

Farm Hella Anderson #8

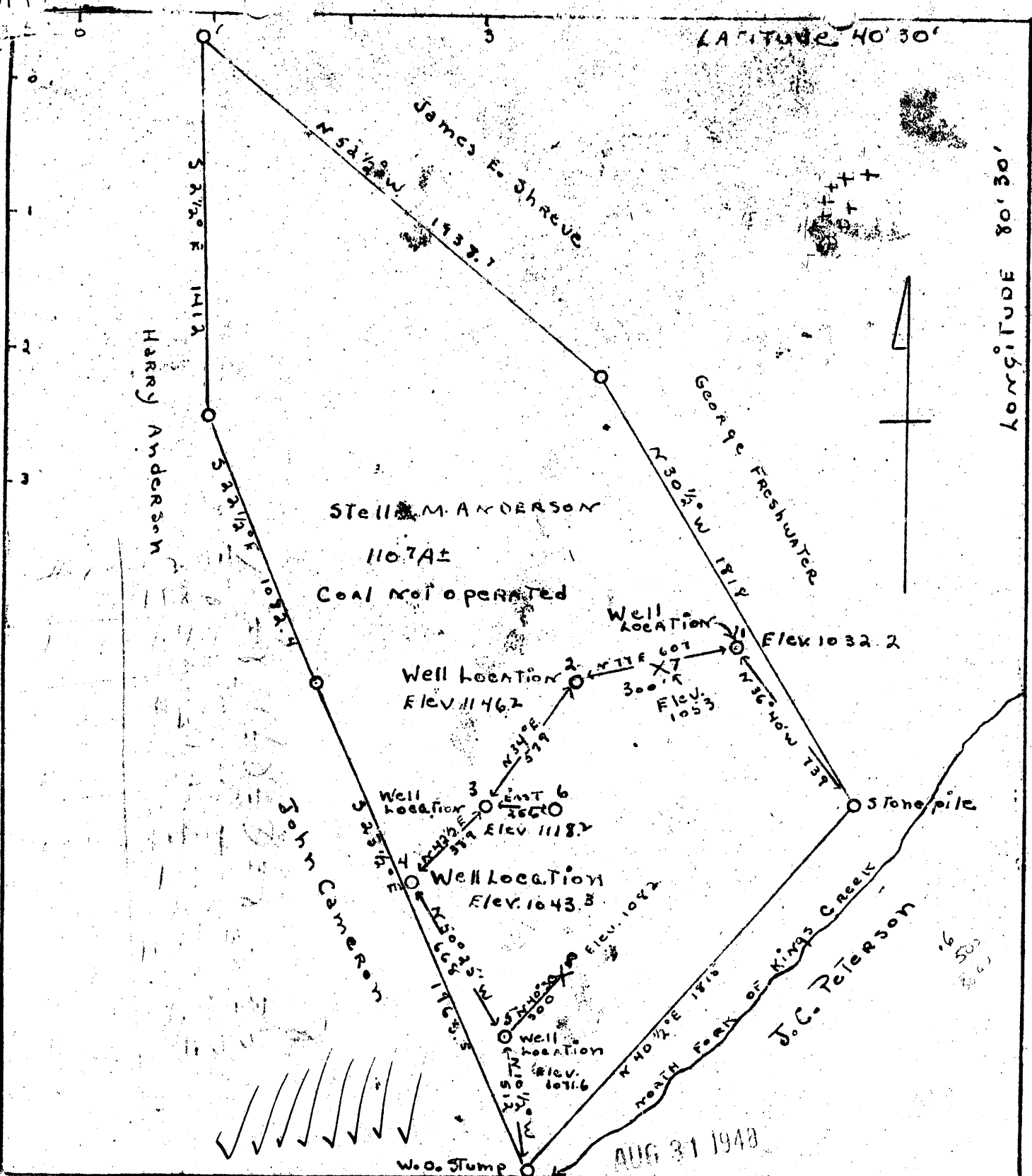
15' Quad _____
(sec.)

7.5' Quad Weinton

District Clay

WELL LOCATION PLAT

County 029 Permit 61



COMPANY F. M. ANDERSON
 ADDRESS R. D. #7,
 NEW CUMBERLAND, W. VA.
 FARM TRACT STELLA M. ANDERSON
 ACRES ONE
 LEASE NO. 110.7 MORE OR LESS
 WELL (FARM) NOS. 1, 2, 3, 4, + 5
 SERIAL NO. *(circled)*
 QUAD. STEUBENVILLE
 COUNTY HANCOCK
 DIST. CLAY
 ENG. W. H. RAMP
 ENGR'S. REG. NO. 386
 FILE NO. DRAWING NO. ONE
 DATE MAY 24, 1941
 SCALE 1 INCH = 500'
 COPIED BY WALTER D. HANN ENG.
 ENG. REG. NO. 218
 NOTE COPY MADE FROM MAP DRAWN
 BY W. H. RAMP
 DATE JULY 27, 1948

STATE OF WEST VIRGINIA
 DEPT. OF MINES
 OIL AND GAS DIVISION
 CHARLESTON
 WELL LOCATION MAP
 FILE NO. HAN 47-52 ENC.
 HAN-60-#1
 HAN-61-#8
 + DENOTES LOCATION OF WELL ON
 UNITED STATES TOPOGRAPHIC MAP
 SCALE 1 TO 62,500, LATITUDE AND
 LONGITUDE LINES BEING REPRESENTED
 BY BORDER LINES AS SHOWN.
 - DENOTES ONE INCH SPACES ON
 BORDER LINES OF ORIGINAL
 TRACING.
W. D. Hann Eng.
 # 60 6-0 8