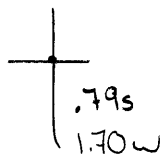


40°35'00"

Latitude

80°30'00"



 .79s

 1.70w

Longitude

Topo Location

7.5' Loc. _____ 15' Loc. _____
 _____ (calc.) _____

Company CA Smith

Farm CA Smith

15' Quad _____
(sec.)

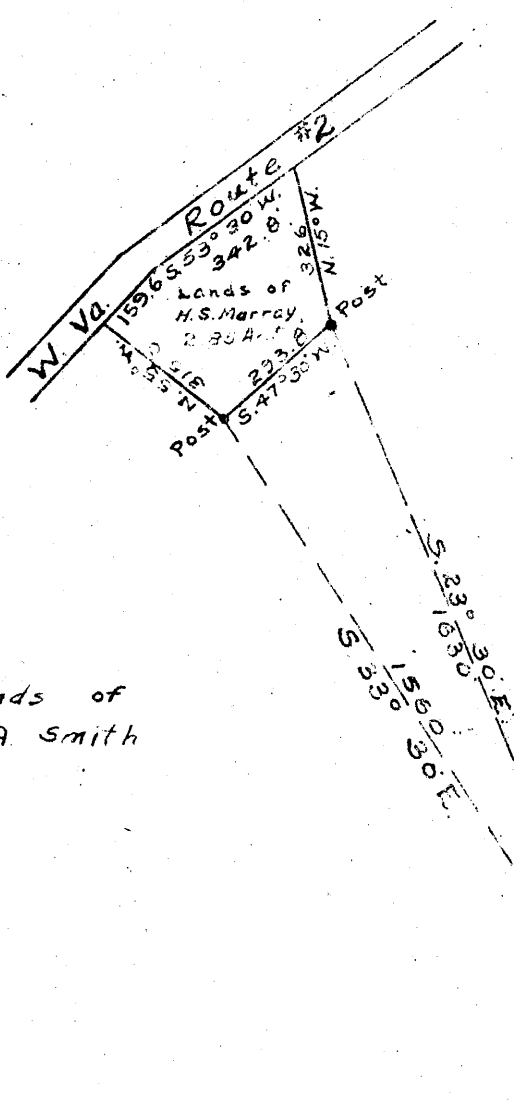
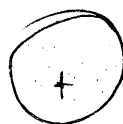
7.5' Quad East Liverpool South

District Grant

WELL LOCATION PLAT

County 029 Permit 62

Latitude 40° 35'



0.785
1.62W

Longitude 80° 30'

Lands of
C.A. Smith

Lands of
C.A. Smith

Elev. 1164.0

New Location
 Drill Deeper
 Abandonment

Company C.A. SMITH
 Address CHESTER W. VA.
 Farm C.A. SMITH
 Tract _____ Acres _____ Lease No. _____
 Well (Farm) No. 6 Serial No. _____
 Elevation (Spirit Level) 1164.0
 Quadrangle WELLSVILLE
 County HANCOCK District GRANT
 Engineer GEORGE S. BLOOMGREN
 Engineer's Registration No. 540 (OHIO)
 File No. _____ Drawing No. _____
 Date AUG 25 1948 Scale 1" = 400'

STATE OF WEST VIRGINIA
 DEPARTMENT OF MINES
 OIL AND GAS DIVISION
 CHARLESTON

WELL LOCATION MAP
 FILE NO. HAN-62

+ Denotes location of well on United States Topographic Maps, scale 1 to 62,500, latitude and longitude lines being represented by border lines as shown.
 - Denotes one inch spaces on border line of original tracing.

C. A. SMITH NO. 6 WELL.

Grant District, Hancock County, W. Va.

By C. A. Smith, Chester, W. Va.

Drilled under permit Han-62; Wellsville Quadrangle.

On.....acres, on Tomlinson Run.

Elevation, 1164' L.

Surface and minerals owned by C. A. Smith, Chester, W. Va.

Drilling commenced Sept. 20, 1948; completed Oct. 20, 1948.

Open flow, 1368 cu. ft.

Fresh water, 125', hole full; 350'.

10" casing, 20'; 8⁵/₈" , 220'; 5¹/₂" O. D., 750'; all left in.

Dry hole. Record from Smith April 26, 1949.

	Top.	Bottom.
Shale, blue	40	60
Shale, black	60	70
Shale, gray	70	75
Coal (show)	75	80
Shale, gray	80	170
Shell, white, sandy	170	185
Shale, gray	185	215
Shale, blue	215	230
Shale, gray	230	270
Shale, sandy	270	325
Sand, white, hard	325	340
Shale, black	340	347
Shale, gray	347	395
Shale, blue	395	450
Shale, gray	450	520
Shale, brown	520	545
Shale, gray	545	580
Shale, blue	580	595
Shale, black	595	635
Big Injun Sand	635	670
Shale, gray	670	687
Shale, blue and gray	687	700
Shell and shale	700	745
Shale, blue	745	760
Shale, gray	760	770
Sand, light	770	775
Shale, sandy, hard	775	800
Shells and shale, sandy	800	830
Sand, white, hard	830	840
Shells and shale, hard	840	880
Sand, white	880	890
Shale and shells	890	920
Shale, gray	920	955
Lime, sandy	955	970
Shale, sandy	970	975
Shale, blue	975	990
Shale, black	990	1027
Sand, white, Berea Grit	1027	1031
Sand, broken, dark	1031	1037
Sand, blue and gray, coarse	1037	1048
Sand, gray, hard	1048	1057
Sand	1057	1061
Sand and shale, mixed (show of gas, 1061')	1061	1068
Sand, coarse	1068	1080
Total depth		1080