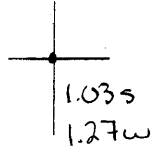


40°35'00"

Latitude

80°30'00"

Longitude



**Topo Location**

**7.5' Loc.** \_\_\_\_\_ **15' Loc.** \_\_\_\_\_  
\_\_\_\_\_ (calc.) \_\_\_\_\_

**Company** C A Smith

**Farm** C A Smith #8

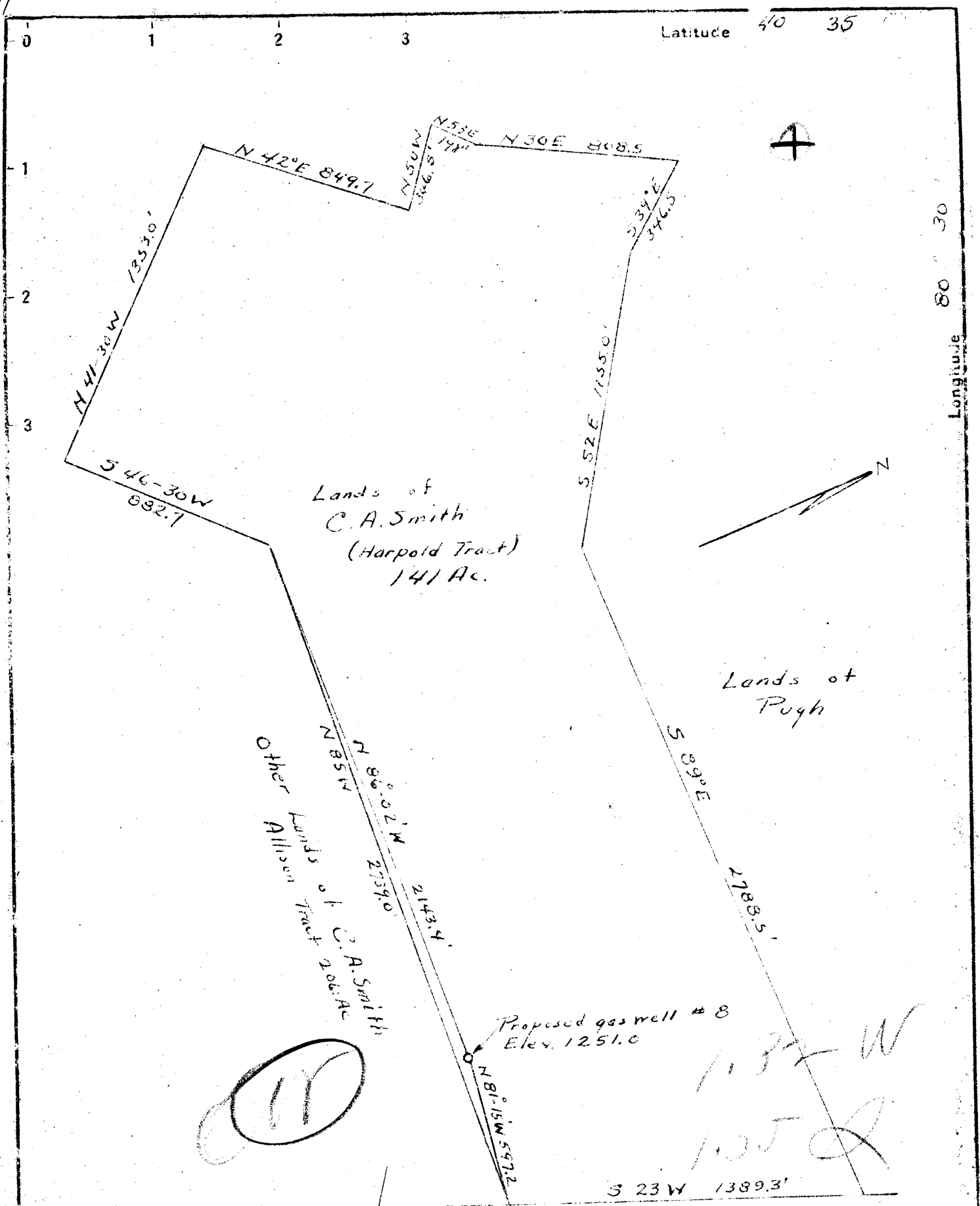
**15' Quad** \_\_\_\_\_  
(sec.)

**7.5' Quad** East Liverpool South

**District** Grant

**WELL LOCATION PLAT**

**County** 029 **Permit** 65



New Location  X  
 Drill Deeper   
 Abandonment

Company **C.A. SMITH**

Address **CHESTER W. VA.**

Farm **C. A. Smith**

Tract **Harpold** Acres **141** Lease No. \_\_\_\_\_

Well (Farm No. **8** Serial No. \_\_\_\_\_)

Elevation (Spirit Level) **1251.0**

Quadrangle **Wellsville**

County **Hancock** District **Grant**

Engineer **George S. Blomgren**

Engineer's Registration No. **540 (Ohio)**

File No. \_\_\_\_\_ Drawing No. \_\_\_\_\_

Date **Mar. 24-1949** Scale **1" = 500'**

STATE OF WEST VIRGINIA  
 DEPARTMENT OF MINES  
 OIL AND GAS DIVISION  
 CHARLESTON

**WELL LOCATION MAP**  
 FILE NO. **HAN-65**

+ Denotes location of well on United States Topographic Maps, scale 1 to 62,500, latitude and longitude lines being represented by border lines as shown.

-- Denotes one inch spaces on border line of original tracing.

6-0 5

1.05 mi. S 40°35'

1.32 mi W 80°30' WEST VIRGINIA DEPARTMENT OF MINES  
OIL & GAS DIVISION  
WELL RECORD

Dry Hole  
CASING & TUBING

|                  |  |       |     |      |
|------------------|--|-------|-----|------|
| Permit No.       | Han 65                                   |       |     |      |
| Wellsville Quad. |  |       |     |      |
| Company          | C.A. Smith                               |       |     |      |
| Address          | Chester, W.Va.                           | 10    | 20  | None |
| Farm             | C.A. Smith Acres 141                     | 8 5/8 | 225 | 185  |
| Location         | Tomilson Run                             | 5 1/2 | 883 | None |
| Well No.         | 8  |       |     |      |
| District         | Grant Hancock County                     |       |     |      |
| Surface          | C.A. Smith, Chester, W.Va.               |       |     |      |
| Mineral          | Same                                     |       |     |      |
| Commenced        | April 19, 1949                           |       |     |      |
| Completed        | May 18, 1949                             |       |     |      |
| Volume           | Show of gas                              |       |     |      |
| Fresh Water      | 110' HF; 360' 4 bailers per hr or 2 Bbl. |       |     |      |

|                      |         |      |      |  |
|----------------------|---------|------|------|--|
| Clay                 | Y       | 1    | 20   |  |
| Shale                | Gr      | 20   | 90   |  |
| Sand                 | Wh      | 90   | 110  |  |
| Shale & Shells       |         | 110  | 135  |  |
| Coal                 |         | 135  | 138  |  |
| Sand & Shale         |         | 138  | 150  |  |
| Shale                | Bl      | 150  | 175  |  |
| Shale                | Blk     | 175  | 223  |  |
| Shale                | Green   | 223  | 260  |  |
| Red Rock             |         | 260  | 265  |  |
| Sandy Shale & Shells |         | 265  | 345  |  |
| Shale                | Blk     | 345  | 355  |  |
| Shale                | Bl      | 355  | 360  |  |
| Sand                 | Wh      | 360  | 372  |  |
| Shale                | Sandy   | 372  | 377  |  |
| Sand                 | Gr      | 377  | 410  |  |
| Shale                | Blk     | 410  | 435  |  |
| Sand                 | Wh H    | 435  | 490  |  |
| Shale                | Blk     | 490  | 500  |  |
| Shale & Shells       | Gr      | 500  | 632  |  |
| Shale                | Br      | 632  | 655  |  |
| Shale & Shells       | Gr H    | 655  | 680  |  |
| Lime Shell           | H       | 680  | 685  |  |
| Shale & Shells       | Gr H    | 685  | 735  |  |
| Shale                | Gr      | 735  | 750  |  |
| Shale                | Blk     | 750  | 807  |  |
| Sand Injun-          | Broken  | 807  | 830  |  |
| Shale                | Bl      | 830  | 880  |  |
| Shale                | Bl & Gr | 880  | 960  |  |
| Lime Shell           |         | 960  | 957  |  |
| Shale & Shells       | Gr H    | 957  | 1005 |  |
| Shale                | Gr      | 1005 | 1055 |  |
| Shell & Sand         | H       | 1055 | 1060 |  |
| Sandy Shale          |         | 1060 | 1090 |  |
| Sand                 | Bl H    | 1090 | 1100 |  |
| Sandy Shale          |         | 1100 | 1135 |  |
| Shale                | Blk     | 1135 | 1179 |  |
| Berea Sand           | S       | 1179 | 1184 |  |
| Berea Sand           | H Fine  | 1184 | 1193 |  |
| Berea Sand           | Coarse  | 1193 | 1212 |  |
| Shale                | Blue H  | 1212 | 1218 |  |
| Total depth          |         |      | 1218 |  |

*ABD  
5/30*

Smell of gas

