

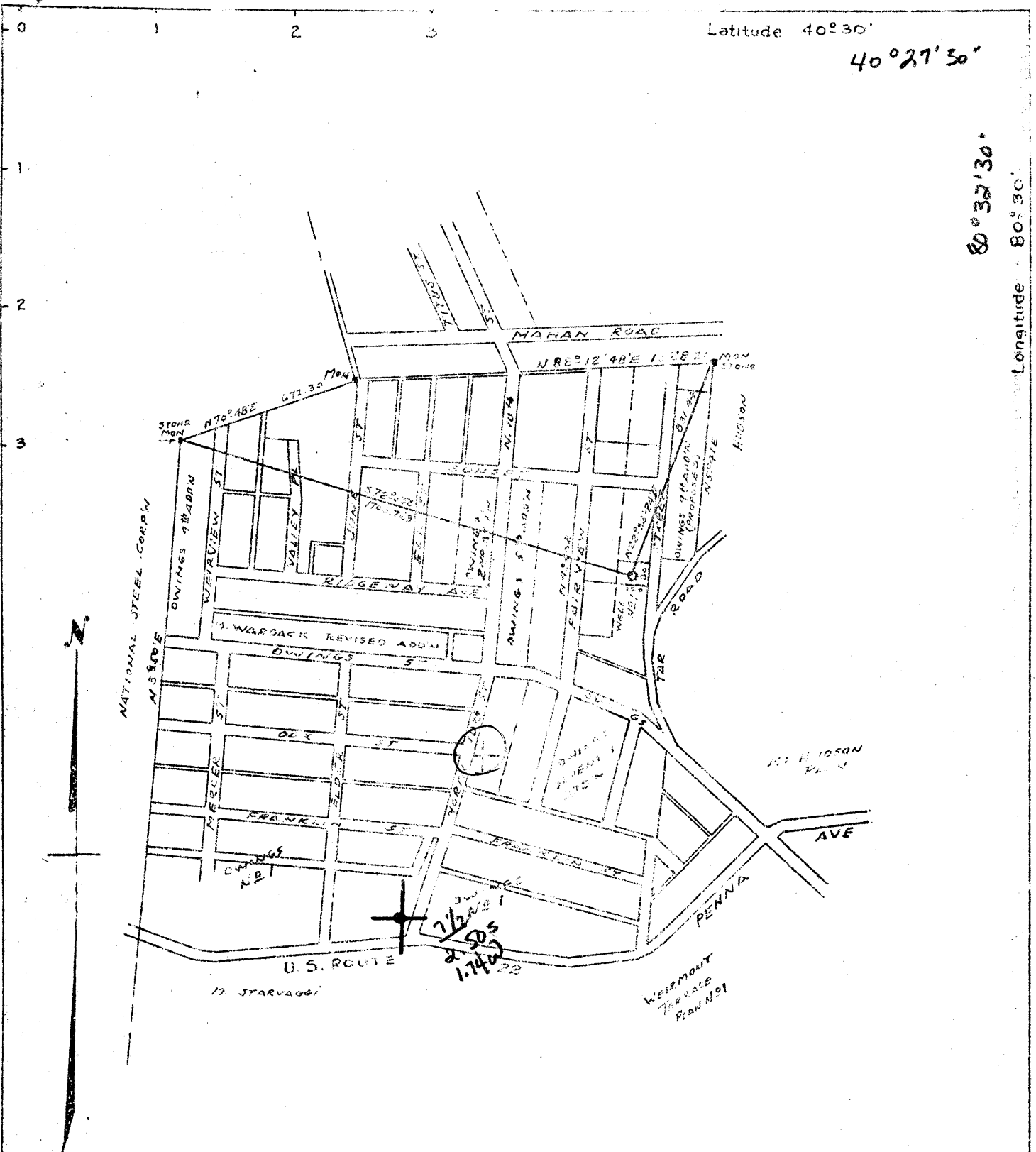


Latitude 40°30'

40°27'30"

80°32'30"

Longitude 80°30'



New Location   
 Drill Deeper   
 Abandonment

Company	RALPH PULVER
Address	Box 687 WEIRTON W.V.A.
Farm	TOM OWINGS (LOT PLAN)
Tract	Acres <sup>LOT PLAN</sup> Lease No
Well (Farm) No	I Serial No
Elevation (Spirit Level)	1117.60
Quadrangle	WEIRTON W.V.A. STEUBENVILLE NE
County	HANCOCK District BUTLER
Engineer	FRANK LEPERA
Engineer's Registration No.	1124
File No.	Drawings No
Date	3/2/50 Scale 1"=500'

STATE OF WEST VIRGINIA  
 DEPARTMENT OF MINES  
 OIL AND GAS DIVISION  
 CHARLESTON

WELL LOCATION MAP  
 FILE NO HAN-67

+ Denotes location of well on United States Topographic Maps, scale 1 to 62 500, latitude and longitude lines being represented by border lines as shown.

-- Denotes one inch spaces on border line of original tracing.