



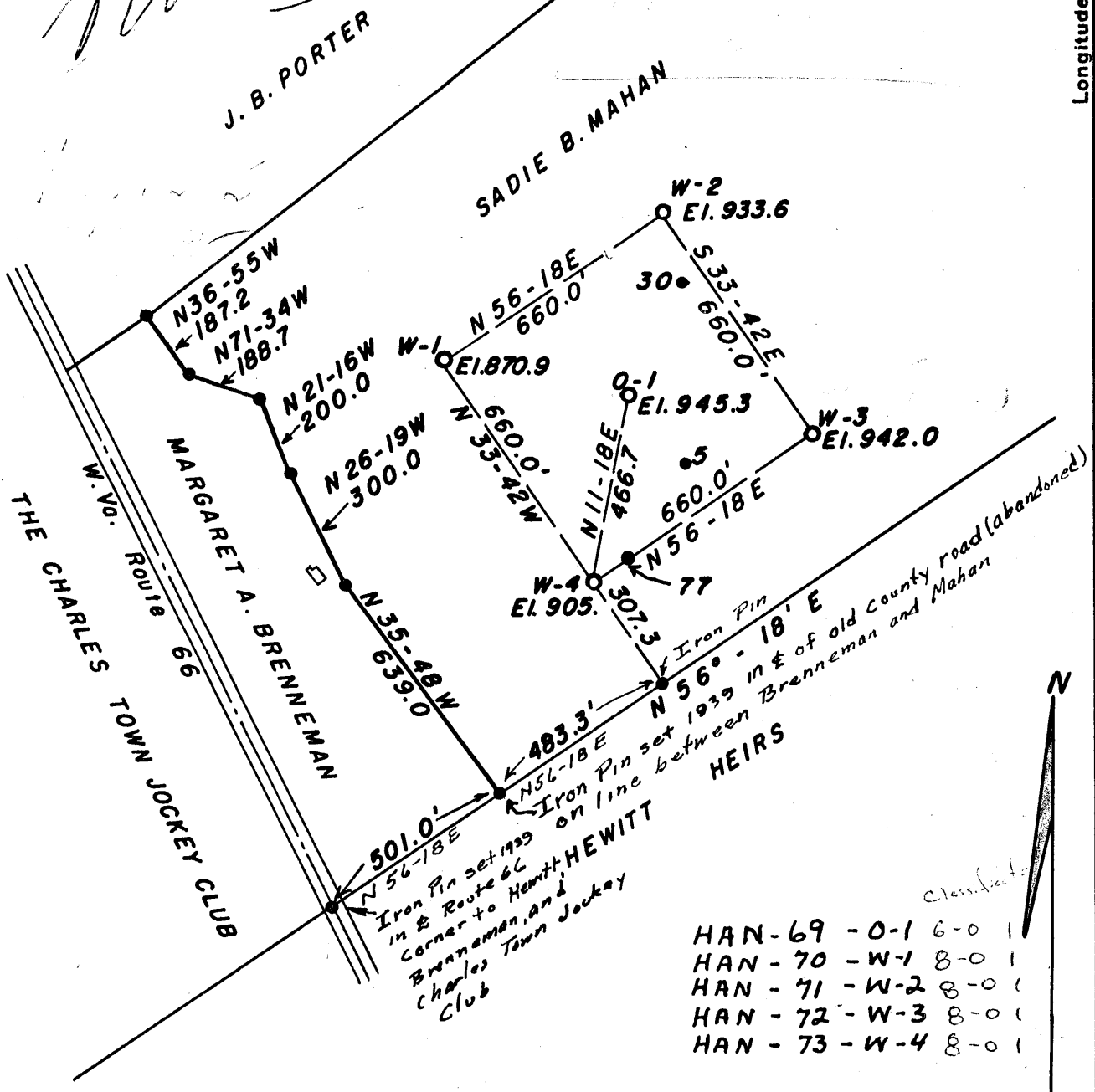
Ref. to U.S. Topo. map

Latitude 40° 35'

1  
2  
3

Longitude 80° 37' 30"

*W.D. Gardner*



New Location...    
 Drill Deeper.....    
 Abandonment.....

(W - INPUT WELLS)

HAN-69 - 0-1 6-0 1  
 HAN-70 - W-1 8-0 1  
 HAN-71 - W-2 8-0 1  
 HAN-72 - W-3 8-0 1  
 HAN-73 - W-4 8-0 1

Company PANOCO OIL LEASES, INC.  
 Address P.O. Box 977--Parkersburg, W. Va.  
 Farm Sadie Mahan  
 Tract \_\_\_\_\_ Acres 218 Lease No. \_\_\_\_\_  
 Well (Farm) No. \_\_\_\_\_ Serial No. \_\_\_\_\_  
 Elevation (Spirit Level) \_\_\_\_\_  
 Quadrangle WELLSVILLE (W. Va.-Ohio-Pa)  
 County HANCOCK District GRANT  
 Engineer George S. Bloomgren  
 Engineer's Registration No. 2260  
 File No. \_\_\_\_\_ Drawing No. \_\_\_\_\_  
 Date June 10, 1954 Scale 1" = 400'

STATE OF WEST VIRGINIA  
 DEPARTMENT OF MINES  
 OIL AND GAS DIVISION  
 CHARLESTON

**WELL LOCATION MAP**  
 FILE NO. See ABOVE 169  
 WATER FLOOD

+ Denotes location of well on United States Topographic Maps, scale 1 to 62,500, latitude and longitude lines being represented by border lines as shown.

- Denotes one inch spaces on border line of original tracing.

Above



STATE OF WEST VIRGINIA  
DEPARTMENT OF MINES  
OIL AND GAS DIVISION

Quadrangle Wellsville, W.Va.-O.-Pa.

**WELL RECORD**

Oil or Gas Well Oil  
(KIND)

Permit No. HAN-69

Company Panuco Oil Leases, Inc.  
Address P.O. Box 1849, Parkersburg, W.Va.  
Farm Sadie Mahan Acres 217  
Location (waters) Ohio River  
Well No. 0-1 Elev. 445.3  
District Grant County Hancock  
The surface of tract is owned in fee by Sadie Mahan  
Address New Cumberland  
Mineral rights are owned by Sadie Mahan  
Address As above  
Drilling commenced July 24, 1954  
Drilling completed Oct. 9, 1954  
Date Shot From To  
With

Casing and Tubing	Used in Drilling	Left in Well	Packers
Size			Kind of Packer
16			
13			
10			Size of
8 1/2			
6			Depth set
<del>5 1/2</del> 4 1/2		703.5	
3			Perf. top
2			Perf. bottom
Liners Used			Perf. top
			Perf. bottom

Open Flow /10ths Water in \_\_\_\_\_ Inch  
/10ths Merc. in \_\_\_\_\_ Inch  
Volume \_\_\_\_\_ Cu. Ft.  
Rock Pressure \_\_\_\_\_ lbs. \_\_\_\_\_ hrs.  
Oil \_\_\_\_\_ bbls., 1st 24 hrs.  
Fresh water \_\_\_\_\_ feet \_\_\_\_\_ feet  
Salt water \_\_\_\_\_ feet \_\_\_\_\_ feet

CASING CEMENTED 4 1/2 SIZE 703.5 No. Ft. July-27- /Date 1954  
with 50 sacks  
COAL WAS ENCOUNTERED AT 134 FEET \_\_\_\_\_ INCHES  
188 FEET \_\_\_\_\_ INCHES 220 FEET \_\_\_\_\_ INCHES  
260 FEET \_\_\_\_\_ INCHES 479 FEET \_\_\_\_\_ INCHES  
500

Formation	Color	Hard or Soft	Top	Bottom	Oil, Gas or Water	Depth Found	Remarks
DRILLER'S LOG							
Shale & Sand			0	355			
Shaley Sand & Sand			355	666			
Shaley Sand & Sand			666	893			
Sand			893	911 T.D.			

