

40°35'00"

Latitude

+

.16s
1.22w

80°37'30"

Longitude

Topo Location

7.5' Loc. _____ 15' Loc. _____
_____ (calc.) _____

Company Panuco Oil

Farm Sadio Mabon W4

15' Quad _____
(sec.)

7.5' Quad Well 5110

District Gran

WELL LOCATION PLAT

County 029 Permit 73

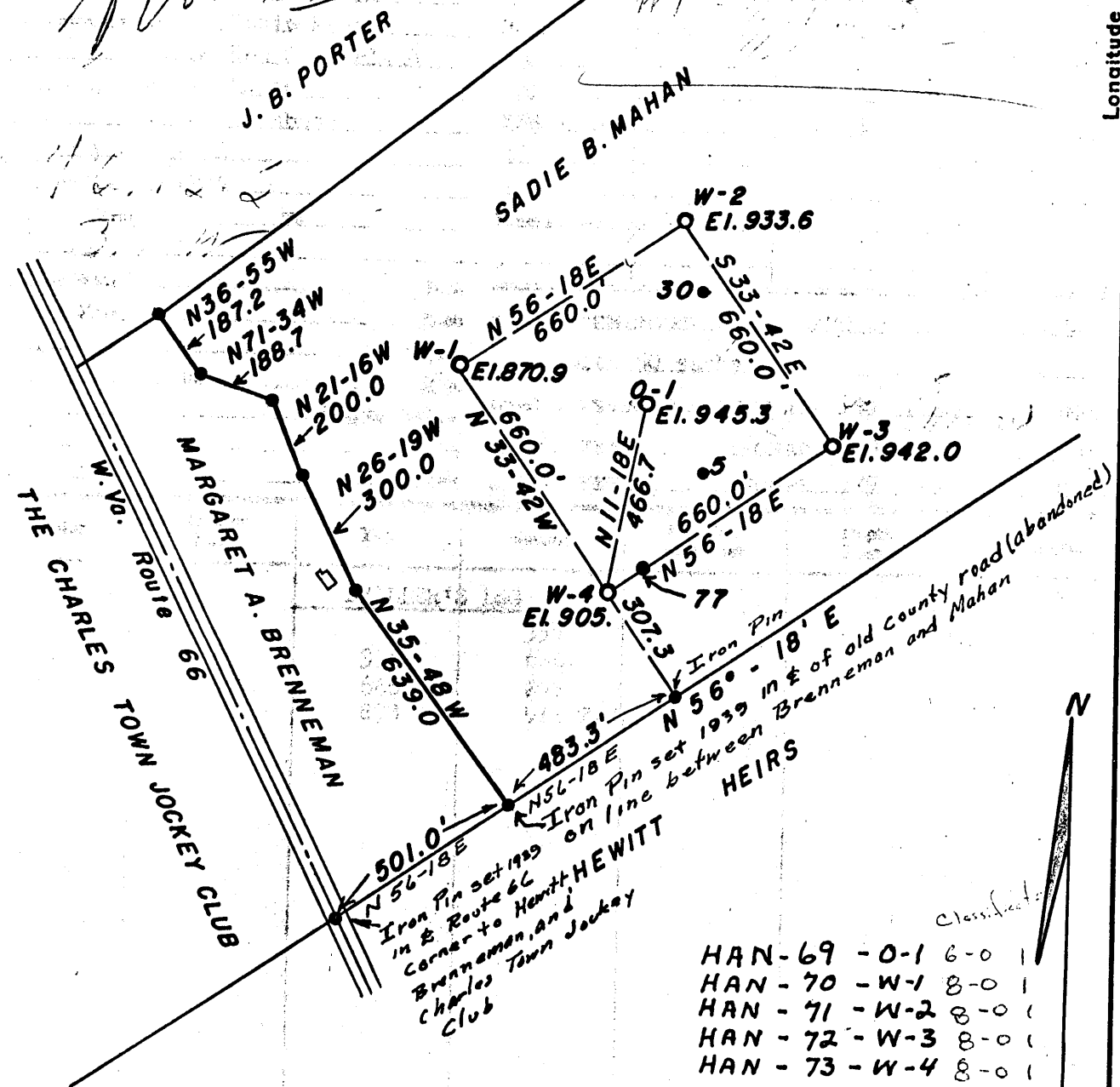
Ref. to U.S. Topo. map

Latitude 40° 35'

Handwritten notes: 0.195 (234), 7.5' loc, 0.05, 3.5W, 7.5' loc, Han 72, 0.10 S, 1.12W, 2.18, 1.12, 3.30W

Handwritten signature: *W.D. Gurd*

Longitude 80° 37' 30"



New Location..
 Drill Deeper.....
 Abandonment.....

(W - INPUT WELLS)

HAN-69	-0-1	6-0	1
HAN-70	-W-1	8-0	1
HAN-71	-W-2	8-0	1
HAN-72	-W-3	8-0	1
HAN-73	-W-4	8-0	1

Company PANICO OIL LEASES, INC.
 Address P.O. Box 977--Parkersburg, W. Va.
 Farm Sadie Mahan
 Tract _____ Acres 218 Lease No. _____
 Well (Farm) No. _____ Serial No. _____
 Elevation (Spirit Level) _____
 Quadrangle WELLSVILLE (W. Va.-Ohio-Pa)
 County HANCOCK District GRANT
 Engineer George S. Bloomgren
 Engineer's Registration No. 2260
 File No. _____ Drawing No. _____
 Date June 10, 1954 Scale 1" = 400'

STATE OF WEST VIRGINIA
 DEPARTMENT OF MINES
 OIL AND GAS DIVISION
 CHARLESTON

WELL LOCATION MAP NO. 69
 FILE NO. See Above
 WATER FLOOD

+ Denotes location of well on United States Topographic Maps, scale 1 to 62,500, latitude and longitude lines being represented by border lines as shown.
 - Denotes one inch spaces on border line of original tracing.

Above

STATE OF WEST VIRGINIA
DEPARTMENT OF MINES
OIL AND GAS DIVISION

Quadrangle Wellsville, W. Va.-O.-Pa.

WELL RECORD

Permit No. HAN-73

Oil or Gas Well Water Input
(KIND)

Company Panuco Oil Leases, Inc.
Address P.O. Bbx 1849, Parkersburg, W. Va.
Farm Sadie Mahan Acres 217
Location (waters) Ohio River
Well No. W-4 Elev. 905'
District Grant County Hancock
The surface of tract is owned in fee by Sadie Mahan

Casing and Tubing	Used in Drilling	Left in Well	Packers
Size			Kind of Packer
16			
13			Size of
10			Depth set
8 1/2		846.6	Perf. top
6			Perf. bottom
3			Perf. top
2			Perf. bottom
Liners Used			

Address New Cumberland, W. Va.
Mineral rights are owned by Sadie Mahan
Address As above

Drilling commenced July 19, 1954
Drilling completed Sept. 13, 1954
Date Shot 9/3/54 From 866 To 872
With 40 qts. nitroglycerine

Open Flow /10ths Water in _____ Inch
/10ths Merc. in _____ Inch
Volume _____ Cu. Ft.
Rock Pressure _____ lbs. _____ hrs.
Oil _____ bbls., 1st 24 hrs.
Fresh water _____ feet _____ feet
Salt water _____ feet _____ feet

1954

CASING CEMENTED 4 1/2 SIZE 846.6 No. Ft. July-23- /Date
with 50 sacks

COAL WAS ENCOUNTERED AT 168 FEET INCHES
198 FEET INCHES 402 FEET INCHES
457 FEET INCHES FEET INCHES

Formation	Color	Hard or Soft	Top	Bottom	Oil, Gas or Water	Depth Found	Remarks
* DRILLER'S LOG							
Sand & Shale		Hard	0	120			
Shale & Sand			120	757			
Sand & Shale			757	855			
Sand			855	880T.D.			

