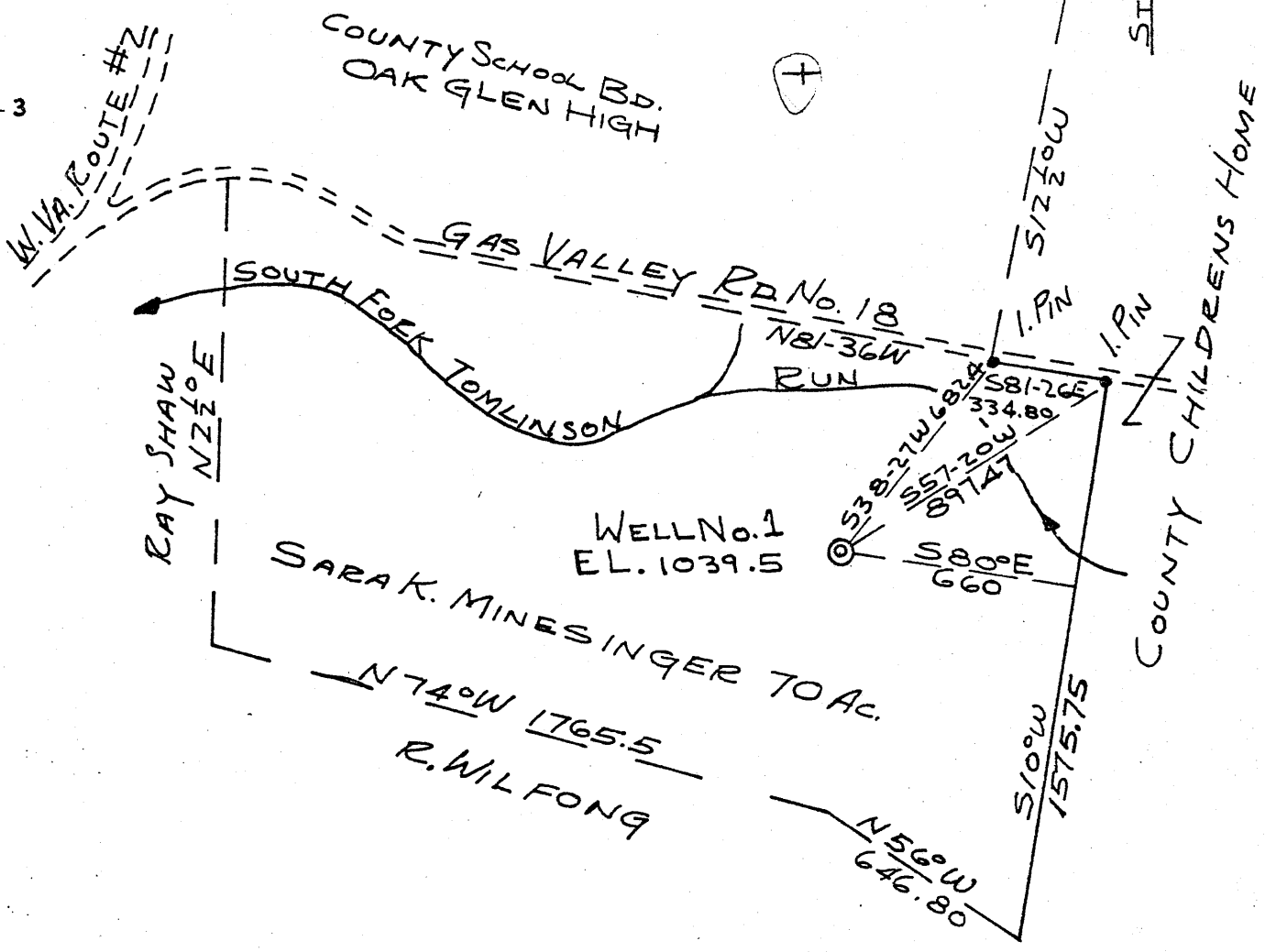
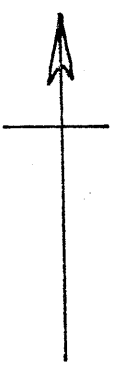


N



3.05 S.
 3.02 W.
 7 WC (A-9)

7.5' loc
 0.13 S 40 32 30
 0.76 W 80 32 30

New Location ELEVATION TIED-IN TO BM.1177 IN FIGHTTOWN, W.VA.
 Drill Deeper DEGREE OF ACCURACY ONE PART IN 2500
 Redrill
 Abandonment "I, the undersigned, hereby certify that this map is correct to the best of my knowledge and belief and shows all the information required by paragraph 6 of the rules and regulations of the oil and gas section of the mining laws of West Virginia."

John J. Wargacki

Company HUMBLE OIL & REFINING Co.
 Address 2010 WEST OHIO ST. EVANSVILLE, IND.
 Farm S. MINESINGER
 Tract Acres 70 Lease No. _____
 Well (Farm) No. 1 Serial No. _____
 Elevation (Spirit Level) 1039.5 FT. *East Liverpool South*
 Quadrangle WELLSVILLE - SE
 County HANCOCK District CLAY
 Engineer JOHN J. WARGACKI
 Engineer's Registration No. 2246
 File No. _____ Drawing No. 65-11 REV.
 Date APRIL 15, 1965 Scale 1" = 500'

STATE OF WEST VIRGINIA
 DEPARTMENT OF MINES
 OIL AND GAS DIVISION
 CHARLESTON

WELL LOCATION MAP
 FILE NO. HAN-80-REVISED

+ Denotes location of well on United States Topographic Maps, scale 1 to 62,500, latitude and longitude lines being represented by border lines as shown.
 - Denotes one inch spaces on border line of original tracing.

NOTE - THIS DWG REPLACES DWG DATED MAR 23, 65

Geo-Log:

Medina 6830-7025

Queenston 7025-?

* Beekmantown ~~9915~~ T.D. (drillers report T.D. in "Miries" sandy dol.)

678

Geo. Shearow:

Orisk 4876-4938 repeats at ~5170

Carbonates 4600-6550 Onondaga - Orisk - Helderberg

7025	9915
1040	1040
<hr/>	<hr/>
5985	8875

5170 Y10

Mech. logs: (kb 1052)

On 4662
 Or 4874
 He 4938
 B.I. 5172
 Sal. 5238

E-LIG TIPS

TEHR - 6806

JUNT - 7000

41662
 1052
 36