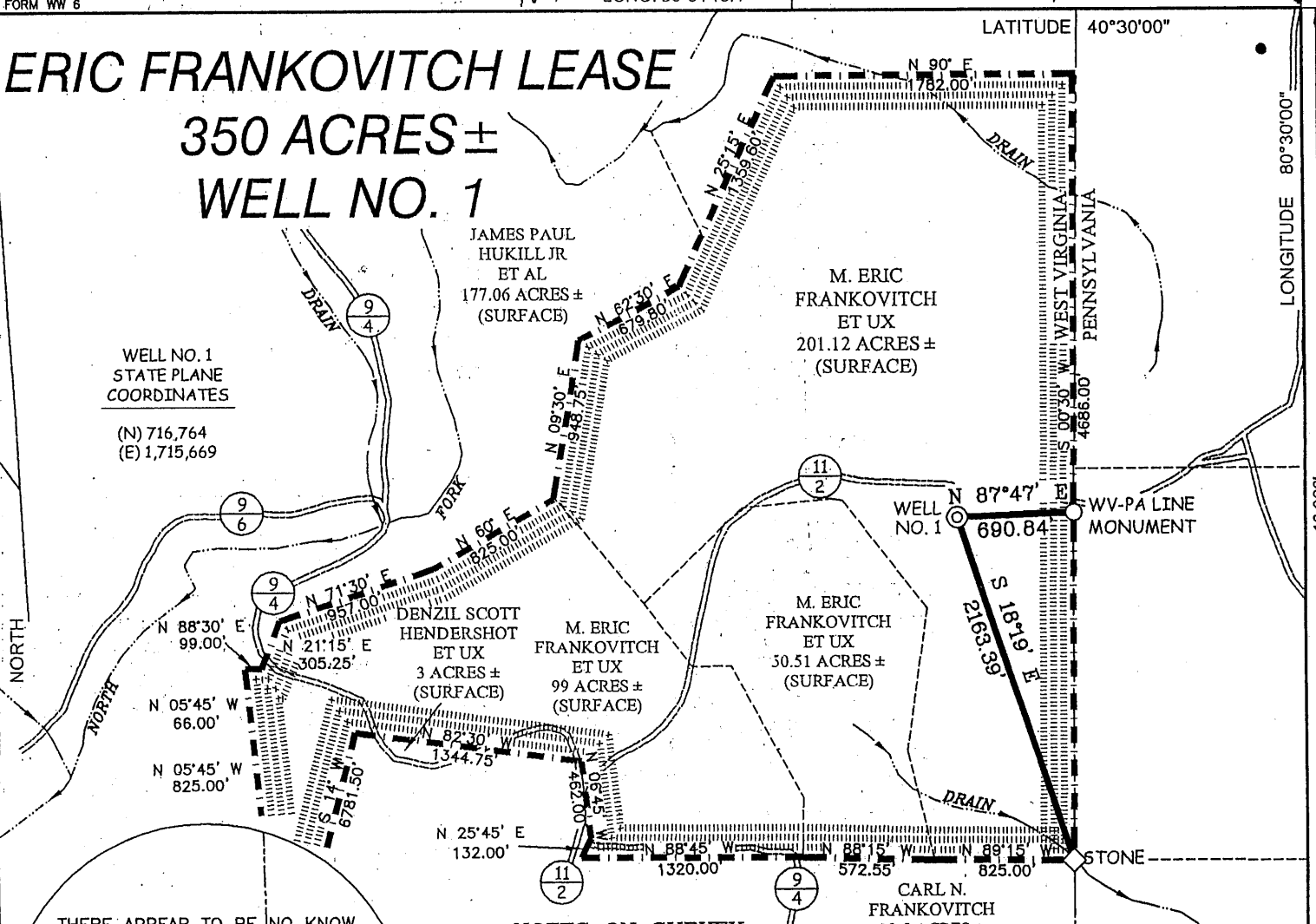


ERIC FRANKOVITCH LEASE

350 ACRES ± WELL NO. 1



WELL NO. 1
STATE PLANE
COORDINATES

(N) 716,764
(E) 1,715,669

THERE APPEAR TO BE NO KNOWN
PERMITTED WELLS WITHIN 2,400'

WELL NO. 1

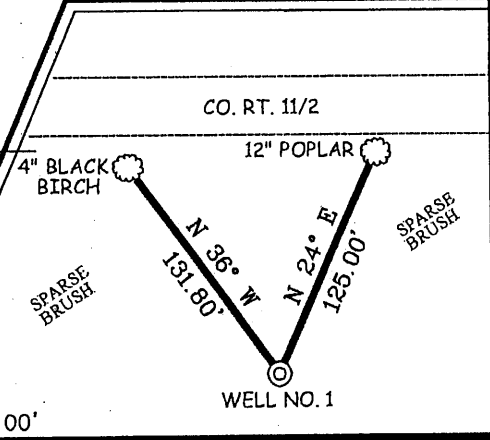
2400'

WEST VIRGINIA
PENNSYLVANIA

NOTES ON SURVEY

1. TIES TO WELLS AND CORNERS ARE BASED ON GRID NORTH FOR THE WV STATE PLANE COORDINATE SYSTEM NORTH ZONE NAD '27.
2. TIES TO REFERENCES ARE BASED ON MAGNETIC NORTH 10-13-05.
3. LEASE BOUNDARY SHOWN HEREON TAKEN FROM DEED BOOK 257 PAGE 769.
4. SURFACE OWNER AND ADJOINER INFORMATION TAKEN FROM THE ASSESSOR AND COUNTY CLERK RECORDS OF HANCOCK COUNTY IN OCTOBER, 2005.
5. WELL LAT./LONG. (NAD'27) ESTABLISHED BY DGPS(SUBMETER MAPPING GRADE).

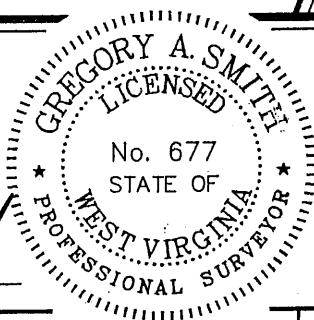
REFERENCES



I THE UNDERSIGNED, HEREBY CERTIFY THAT THIS PLAT IS CORRECT TO THE BEST OF MY KNOWLEDGE AND BELIEF AND SHOWS ALL THE INFORMATION REQUIRED BY LAW AND THE REGULATIONS ISSUED AND PRESCRIBED BY THE DIVISION OF ENVIRONMENTAL PROTECTION.

P.S. 677

Gregory A. Smith



(+) DENOTES LOCATION OF WELL ON UNITED STATES TOPOGRAPHIC MAPS.

DATE OCTOBER 19, 20 05

OPERATORS WELL NO. ERIC FRANKOVITCH #1

API WELL NO. 47 - 29 - 00132-PPF
STATE COUNTY PERMIT

MINIMUM DEGREE OF ACCURACY 1/200 FILE NO. 5877P1(199-41)
PROVEN SOURCE OF ELEVATION DGPS (SUBMETER MAPPING GRADE) SCALE 1" = 1000'

STATE OF WEST VIRGINIA
DIVISION OF ENVIRONMENTAL PROTECTION
OFFICE OF OIL AND GAS



WELL TYPE: OIL GAS LIQUID INJECTION WASTE DISPOSAL IF "GAS" PRODUCTION STORAGE DEEP SHALLOW

LOCATION: ELEVATION 1,241' WATERSHED TRIBUTARY OF AUNT CLARA FORK OF KINGS CREEK
DISTRICT BUTLER COUNTY HANCOCK QUADRANGLE WEIRTON 7.5'

SURFACE OWNER M. ERIC FRANKOVITCH ET UX ACREAGE 201.12 ±
ROYALTY OWNER M. ERIC FRANKOVITCH ET UX LEASE ACREAGE 350 ±
LEASE NO. _____

PROPOSED WORK:
DRILL CONVERT DRILL DEEPER REDRILL DEC 29 2006 FRACTURE OR STIMULATE PLUG OFF OLD FORMATION PERFORATE NEW FORMATION PLUG AND ABANDON CLEAN OUT AND REPLUG OTHER _____
PHYSICAL CHANGE IN WELL (SPECIFY) _____ TARGET FORMATION ORISKANY
ESTIMATED DEPTH 5,600'

WELL OPERATOR BUCKEYE OIL PRODUCING CO. DESIGNATED AGENT WILLIAM RICHARDS
ADDRESS P.O. BOX 129 ADDRESS RT 1 BOX 150A
WOOSTER, OH. 44691 BIG BEND, WV 26136

COUNTY NAME HANCOCK
PERMIT 0132 PPF

ERIC FRANKOVITCH LEASE

350 ACRES ± WELL NO. 1

WELL NO. 1
STATE PLANE
COORDINATES

(N) 716,764
(E) 1,715,669

JAMES PAUL
HUKILL JR
ET AL
177.06 ACRES ±
(SURFACE)

M. ERIC
FRANKOVITCH
ET UX
201.12 ACRES ±
(SURFACE)

N 88°30' E 99.00'
N 05°45' W 66.00'
N 05°45' W 825.00'

DENZIL SCOTT
HENDERSHOT
ET UX
3 ACRES ±
(SURFACE)

M. ERIC
FRANKOVITCH
ET UX
99 ACRES ±
(SURFACE)

M. ERIC
FRANKOVITCH
ET UX
50.51 ACRES ±
(SURFACE)

WELL
NO. 1

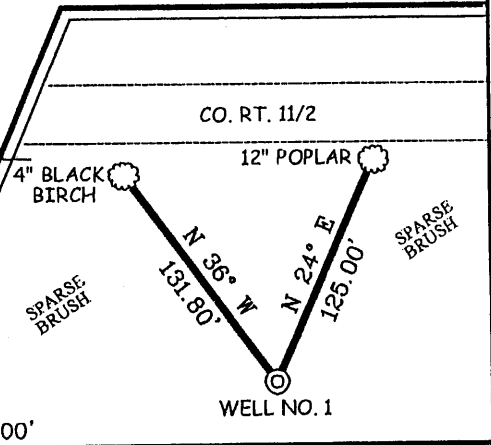
WV-PA LINE
MONUMENT

CARL N.
FRANKOVITCH
32.5 ACRES ±
(SURFACE)

NOTES ON SURVEY

1. TIES TO WELLS AND CORNERS ARE BASED ON GRID NORTH FOR THE WV STATE PLANE COORDINATE SYSTEM NORTH ZONE NAD '27.
2. TIES TO REFERENCES ARE BASED ON MAGNETIC NORTH 10-13-05.
3. LEASE BOUNDARY SHOWN HEREON TAKEN FROM DEED BOOK 257 PAGE 769.
4. SURFACE OWNER AND ADJOINER INFORMATION TAKEN FROM THE ASSESSOR AND COUNTY CLERK RECORDS OF HANCOCK COUNTY IN OCTOBER, 2005.
5. WELL LAT./LONG. (NAD'27) ESTABLISHED BY DGPS(SUBMETER MAPPING GRADE).

REFERENCES



(+) DENOTES LOCATION OF WELL ON UNITED STATES TOPOGRAPHIC MAPS.

DATE OCTOBER 19, 20 05

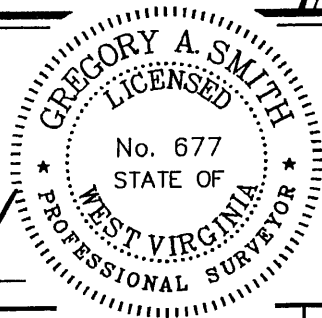
OPERATORS WELL NO. ERIC FRANKOVITCH #1

API WELL NO. 47 - 29 - 00132
STATE COUNTY PERMIT

I THE UNDERSIGNED, HEREBY CERTIFY THAT THIS PLAT IS CORRECT TO THE BEST OF MY KNOWLEDGE AND BELIEF AND SHOWS ALL THE INFORMATION REQUIRED BY LAW AND THE REGULATIONS ISSUED AND PRESCRIBED BY THE DIVISION OF ENVIRONMENTAL PROTECTION.

P.S. 677

Gregory A. Smith



MINIMUM DEGREE OF ACCURACY 1/200 FILE NO. 5877P1(199-41)
PROVEN SOURCE OF ELEVATION DGPS (SUBMETER MAPPING GRADE) SCALE 1" = 1000'

STATE OF WEST VIRGINIA
DIVISION OF ENVIRONMENTAL PROTECTION
OFFICE OF OIL AND GAS



WELL TYPE: OIL GAS LIQUID INJECTION WASTE DISPOSAL IF "GAS" PRODUCTION STORAGE DEEP SHALLOW

LOCATION: ELEVATION 1,241' WATERSHED TRIBUTARY OF AUNT CLARA FORK OF KINGS CREEK
DISTRICT BUTLER COUNTY HANCOCK QUADRANGLE WEIRTON 7.5'

SURFACE OWNER M. ERIC FRANKOVITCH ET UX ACREAGE 201.12 ±
ROYALTY OWNER M. ERIC FRANKOVITCH ET UX LEASE ACREAGE 350 ±
PROPOSED WORK: LEASE NO. _____

DRILL CONVERT DRILL DEEPER REDRILL FRACTURE OR STIMULATE PLUG OFF OLD FORMATION PERFORATE NEW FORMATION PLUG AND ABANDON CLEAN OUT AND REPLUG OTHER _____

PHYSICAL CHANGE IN WELL (SPECIFY) _____ TARGET FORMATION ORISKANY
ESTIMATED DEPTH 5,600'

WELL OPERATOR BUCKEYE OIL PRODUCING CO. DESIGNATED AGENT WILLIAM RICHARDS
ADDRESS P.O. BOX 129 ADDRESS RT 1 BOX 150A
WOOCESTER, OH 44601 BIG BEND, WV 26136

JAN 06 2006

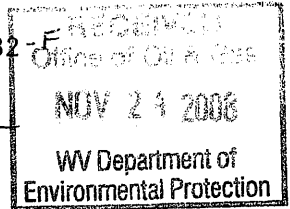
COUNTY NAME HAN
PERMIT 0132

WR-35

DATE: 1-30-07
API #: 029-00132

State of West Virginia
Division of Environmental Protection
Section of Oil and Gas

29 00132



Well Operator's Report of Well Work

Farm name: E. FRANKOVITCH Operator Well No.: #1

LOCATION: Elevation: 1241 Quadrangle: WEIRTON

District: BUTLER County: HANCOCK
Latitude: 690.84 Feet South of 87 Deg. 47 Min. Sec.
Longitude 2163.39 Feet West of 18 Deg. 19 Min. Sec.

Company: BUCKEYE OIL PRODUCING CO.

	Casing & Tubing	Used in drilling	Left in well	Cement fill up Cu. Ft.
Address: P.O. BOX 129 WOOSTER, OH 44691	13 3/8	32.5	32.5	-
Agent: WILLIAM RICHARDS	9 5/8	301	301	200 SX
Inspector: BILL HATFIELD	7"	1661	1661	50 SX
Date Permit Issued: 1/5/2006	4 1/2	5643	5643	100 SX
Date Well Work Commenced: 12/22/06				
Date Well Work Completed: 1/25/07				
Verbal Plugging:				
Date Permission granted on:				
Rotary X Cable Rig				
Total Depth (feet): 5400				
Fresh Water Depth (ft.): 40'				
Salt Water Depth (ft.): 1438'				
Is coal being mined in area (N/Y)? N				
Coal Depths (ft.):				

OPEN FLOW DATA

Producing formation MARELLUS SHALE Pay zone depth (ft) 5290
Gas: Initial open flow 60 MCF/d Oil: Initial open flow 0 Bbl/d
Final open flow 90 MCF/d Final open flow 0 Bbl/d
Time of open flow between initial and final tests Hours
Static rock Pressure 2250 psig (surface pressure) after 6 Hours

Second producing formation Pay zone depth (ft)
Gas: Initial open flow MCF/d Oil: Initial open flow Bbl/d
Final open flow MCF/d Final open flow Bbl/d
Time of open flow between initial and final tests Hours
Static rock Pressure psig (surface pressure) after Hours

NOTE: ON BACK OF THIS FORM PUT THE FOLLOWING: 1). DETAILS OF PERFORATED INTERVALS, FRACTURING OR STIMULATING, PHYSICAL CHANGE, ETC. 2). THE WELL LOG WHICH IS A SYSTEMATIC DETAILED GEOLOGICAL RECORD OF ALL FORMATIONS, INCLUDING COAL ENCOUNTERED BY THE WELLBORE.

Signed:
By: STEVEN W. SIGLER, VICE PRESIDENT
Date: 11/20/08

MAR 06 2009

HAN 0132

Perforation Interval	4916	5374
# of Perforations	152	
Type of Frac	stick water	420,000 gal.
Sks. Of Sand	815	

PLUGGED CHERT W/ CEMENT RETAINER SET @ 5400'

75 SXS CLASS A CEMENT

FORMATION	TOP FEET	BOTTOM	REMARKS
SAND & GRAVEL	5	15	
SAND & SHALE	15	1438	1115' SMELL OF OIL
BEREA SAND		1575	
SHALE & SAND	1575	2010	
GORDON	2010	2020	
SAND & SHALE	2020	5208	
TULLY LIMESTONE	5208	5234	
SHALE	5234	5296	
MARCELLUS SHALE	5296	5374	

DATE: /16/06
API #: 29-00132

WR-35

State of West Virginia
Division of Environmental Protection
Section of Oil and Gas

Well Operator's Report of Well Work

Deep

Farm name: E. FRANKOVITCH Operator Well No.: #1

LOCATION: Elevation: 1241 Quadrangle: WEIRTON

District: BUTLER County: HANCOCK
Latitude: 690.84 Feet South of 87 Deg. 47 Min. Sec.
Longitude 2163.39 Feet West of 18 Deg. 19 Min. Sec.

Company: BUCKEYE OIL PRODUCING CO.

	Casing & Tubing	Used in drilling	Left in well	Cement fill up Cu. Ft.
Address: P.O. BOX 129	13 3/8	32.5	32.5	-
WOOSTER, OH 44691	9 5/8	301	301	200 SX
Agent: BILL RICHARDS	7"	1661	1661	50 SX
Inspector: BILL HATFIELD	4 1/2	5643	5643	100 SX
Date Permit Issued: JAN. 03, 2006				
Date Well Work Commenced: 3-28-06				
Date Well Work Completed: 4-4-06				
Verbal Plugging:				
Date Permission granted on:				
Rotary X Cable Rig				
Total Depth (feet): 5750'				
Fresh Water Depth (ft.): 40'				
Salt Water Depth (ft.): 1438'				
Is coal being mined in area (Y/N)?				
Coal Depths (ft.):				

OPEN FLOW DATA

Producing formation ONONDAGA LIMESTONE Pay zone depth (ft) 5437-70
Gas: Initial open flow 75 MCF/d Oil: Initial open flow Bbl/d
Final open flow 75 MCF/d Final open flow Bbl/d
Time of open flow between initial and final tests 4 1/2 Hours
Static rock Pressure 1950 psig (surface pressure) after Hours

Second producing formation Pay zone depth (ft)
Gas: Initial open flow MCF/d Oil: Initial open flow Bbl/d
Final open flow MCF/d Final open flow Bbl/d
Time of open flow between initial and final tests Hours
Static rock Pressure psig (surface pressure) after Hours

NOTE: ON BACK OF THIS FORM PUT THE FOLLOWING: 1). DETAILS OF PERFORATED INTERVALS, FRACTURING OR STIMULATING, PHYSICAL CHANGE, ETC. 2). THE WELL LOG WHICH IS A SYSTEMATIC DETAILED GEOLOGICAL RECORD OF ALL FORMATIONS, INCLUDING COAL ENCOUNTERED BY THE WELLBORE.

Signed:

By: STEVEN W. SIGLER

Date: 5/16/06

JAN 05 2007

HAN 0132

Perforation Interval	5437	5470
# of Perforations	10	
Type of Frac	ACIDIZE	2000 15%
Sks. Of Sand	0	

FORMATION	TOP FEET	BOTTOM	REMARKS
SAND & GRAVEL	5	15	
SAND & SHALE	15	1438	1115' SMELL OF OIL
BEREA		1575	
SHALE & SAND	1575	2010	
GORDON	2010	2020	
SAND & SHALE	2020	5208	
TULLY LIMESTONE	5208	5234	
SHALE	5234	5296	
MARCELLUS SHALE	5296	5336	
ONONDAGA LIME	5336	5406	
Huntersville? HANDVILLE	5406	5542	
ORISKANY	5542	5606	
^{beg} HELDERVILLE LIMESTONE	5606	T.D.	WET

JAN 05 2007