

40°37'30"

Latitude

Longitude

80°37'30"

+
 2.595
 .46w

Topo Location

7.5' Loc. _____ 15' Loc. _____
 _____ (calc.) _____

Company RJ Bradem Co

Farm WC Maham #1A

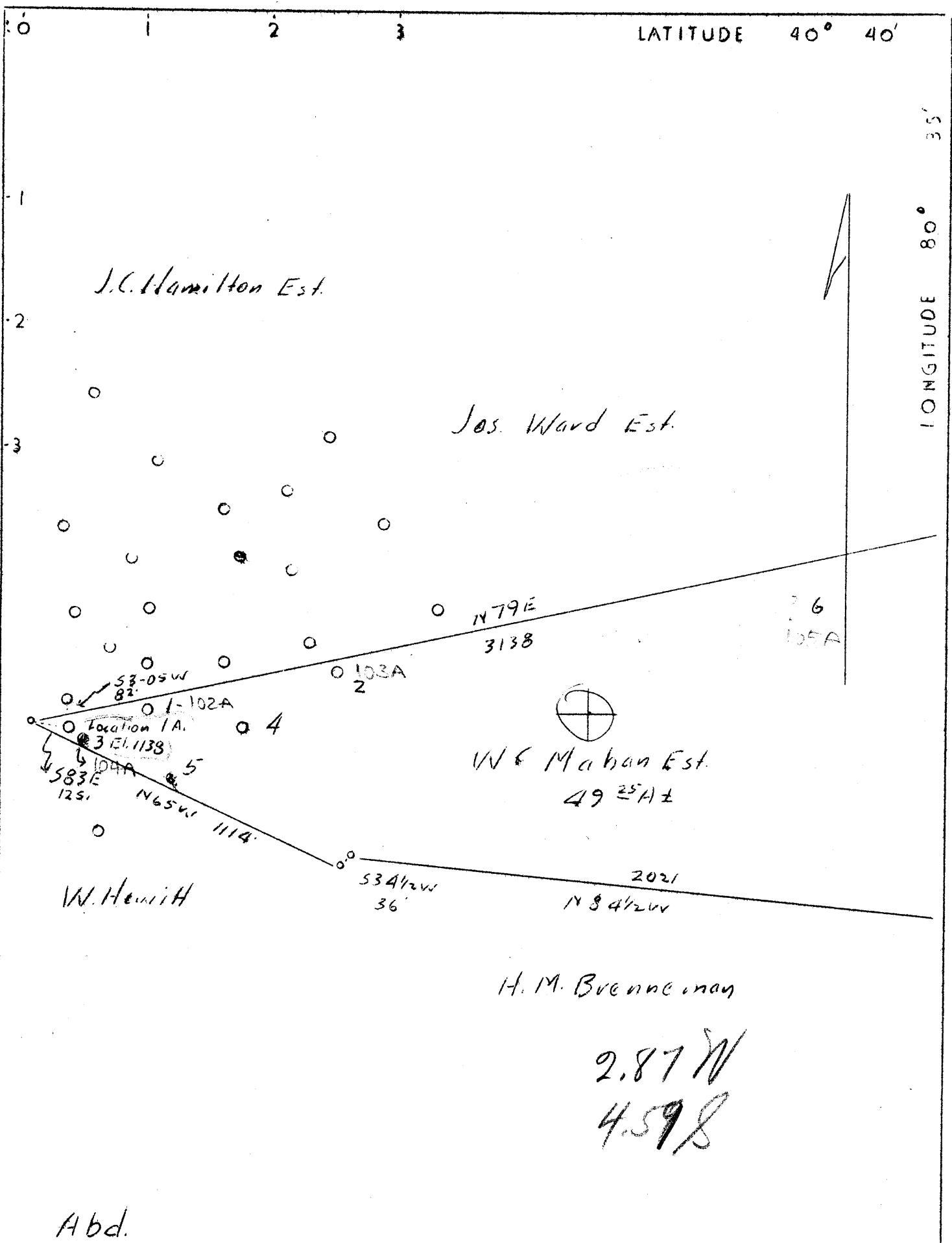
15' Quad _____
(sec.)

7.5' Quad Wellsville

District Grant

WELL LOCATION PLAT

County 029 **Permit** 30003



Abd.

Company	R. J. Braden Co.
Address	Chester, W. Va.
Farm	W. C. Mahan Est.
Tract	One Acres 49.25 Lease No.
Well (Farm) No.	1A Serial No.
Quadrangle	Wellsville (b)
County	Hancock
District	Grant
Engineer	Chas. J. Kaltenbach
Engineer's Registration No.	314
File No.	Drawing No.
Date	Oct. 19, 1937 Scale 1"=400'

STATE OF WEST VIRGINIA
 Department of Mines
 OIL AND GAS DIVISION
 CHARLESTON

WELL LOCATION MAP

File No. 1-A-N-3A

+ Denotes location of well on United States Topographic Maps, scale 1 to 62,500, latitude and longitude lines being represented by border lines as shown.

— Denotes one inch spaces on border line of original tracing.

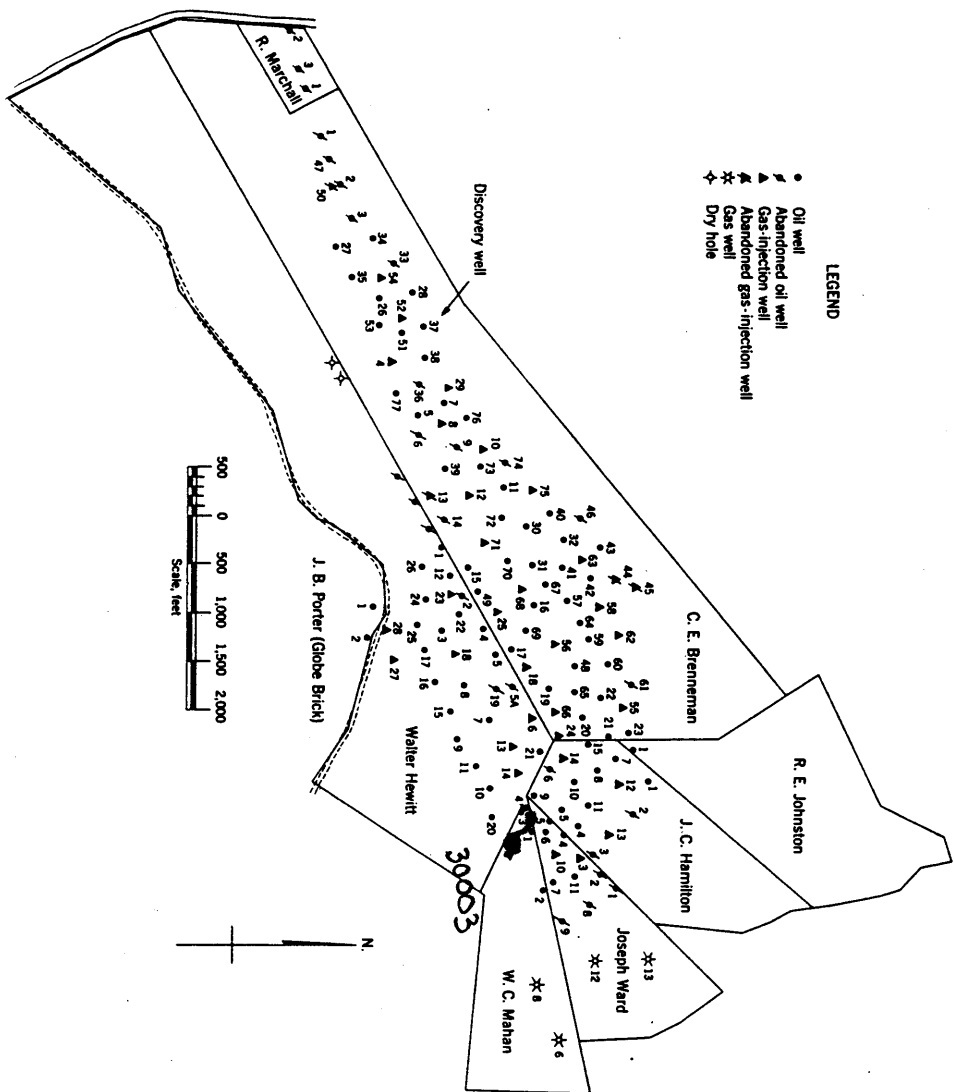


Figure 1. - Ownership map of Brenneman field, Hancock County, W. Va., showing location and status of wells on December 31, 1948.