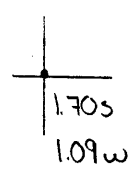


40°35'00"

Latitude

80°30'00"

Longitude



Topo Location

7.5' Loc. _____ 15' Loc. _____
 _____ (calc.) _____

Company John Murray

Farm 5A Richmond #1

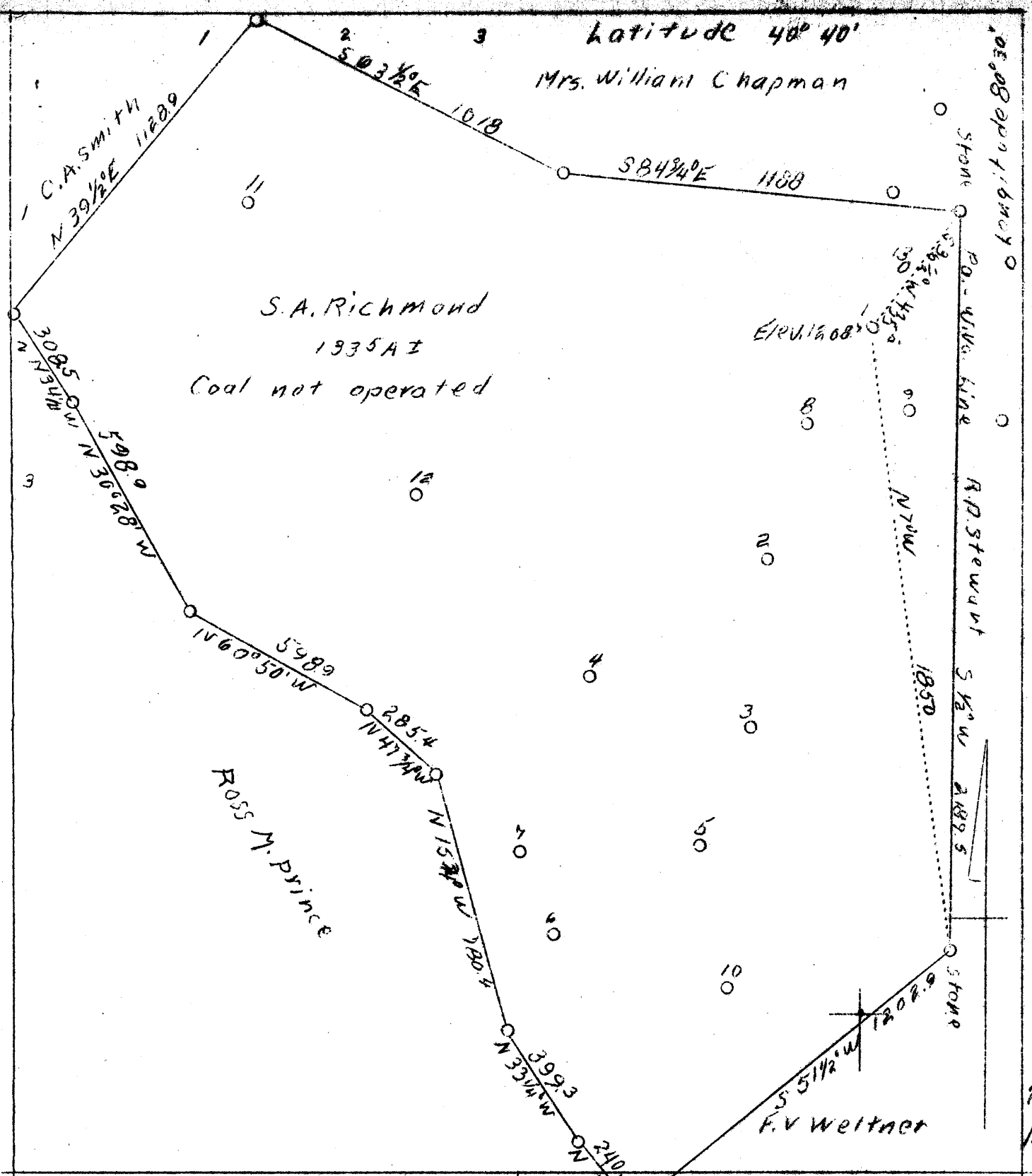
15' Quad _____
(sec.)

7.5' Quad East Liverpool South

District Grant

WELL LOCATION PLAT

County 029 Permit 30012

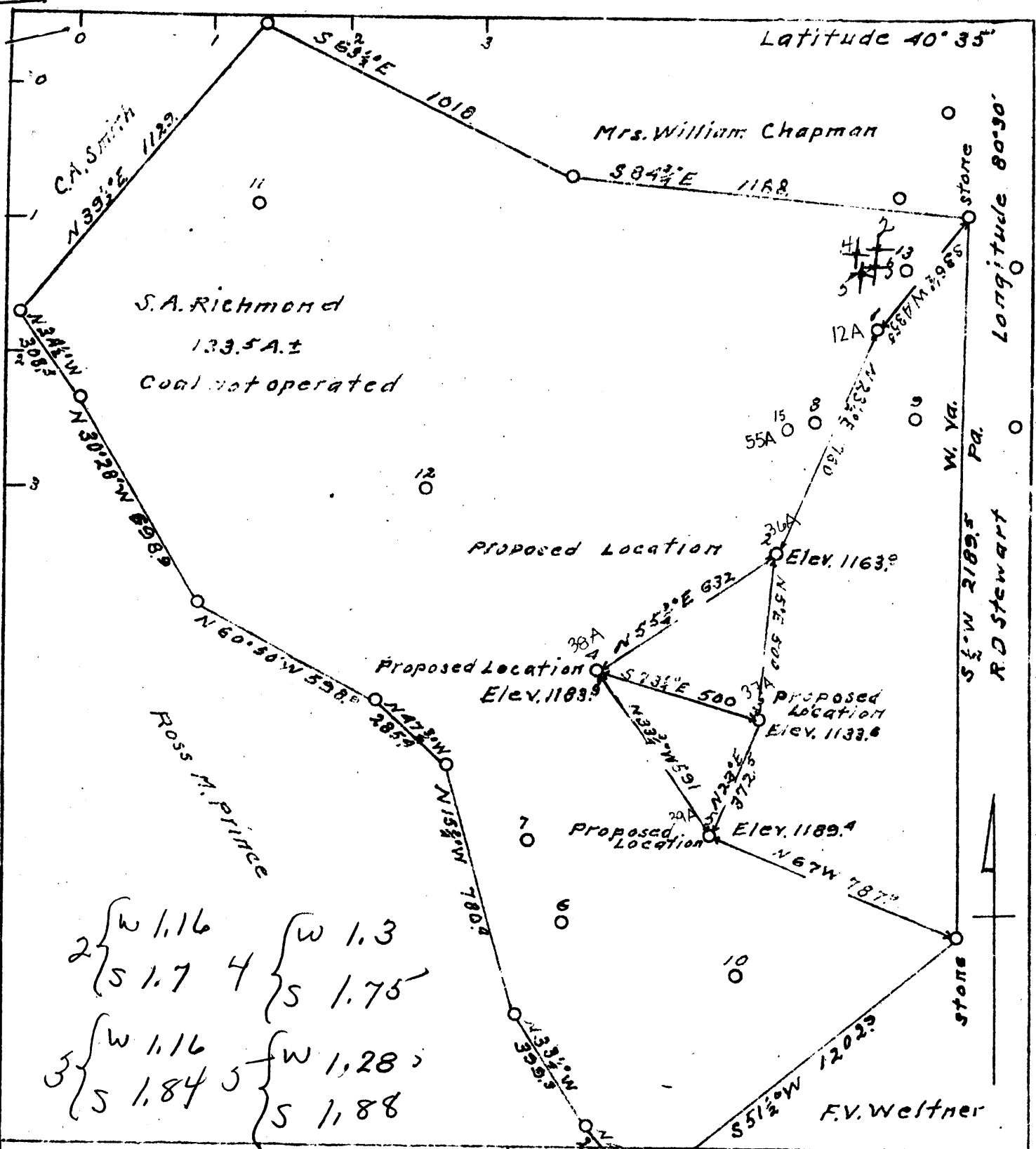


Company John Murray
 Address Chester, W. Va.
 Farm S. A. Richmond
 Tract One
 Acres 133.5 plus
 Well (Farm) No. One
 Quadrangle Wellsville F.C.
 Elevation -
 County Hanceock
 District Grant
 Engineer Chas. J. Kaltenbach
 Eng. Reg. No. 314
 Drawing No. One
 Date July 27, 1938
 Scale 1" = 400'

STATE OF WEST VIRGINIA
 Department of Mines
 OIL & GAS DIVISION
 Charleston

WELL LOCATION MAP
 File No. Han-12-A

x Denotes location of well on U. S. Topographic Maps, scale 1 to 62,500, latitude and longitude lines being represented by border lines as shown.
 - Denotes one inch spaces on border line of original tracing.



2 { W 1.16
 S 1.7 4 { W 1.3
 S 1.75
 3 { W 1.16 5 { W 1.28
 S 1.84 5 { S 1.88

Company John Murray
 Address Chester, W. Va.
 Farm S.A. Richmond
 Tract One Acres 133.5± Lease No.
 Well (Farm) No. 2, 3, 4, 5 Serial No.
 Quadrangle Wellsville S.C.
 County Hancock
 District Clay
 Engineer O.B. Morris
 Engineer's Registration No. 916
 File No. Drawing No. Two
 Date Sept. 17, 1940.
 Scale 1 inch = 400 Feet

STATE OF WEST VIRGINIA
 Department of Mines
 Oil and Gas Division
 Charleston
 WELL LOCATION MAP 12A
 File No. HAN-36-37 & 38-39A
 WELLS 2-3 & 4-5
 + Denotes location of well on
 United States Topographic
 Maps, scale 1 to 62,500, latitude
 and longitude lines being
 represented by border lines
 as shown.
 - Denotes one inch spaces on
 border lines of original tracing.