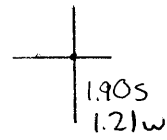


40°30'00"

Latitude

80°30'00"

Longitude



Topo Location

7.5' Loc. _____ 15' Loc. _____
 _____ (calc.) _____

Company John McIntosh

Farm John McIntosh #3

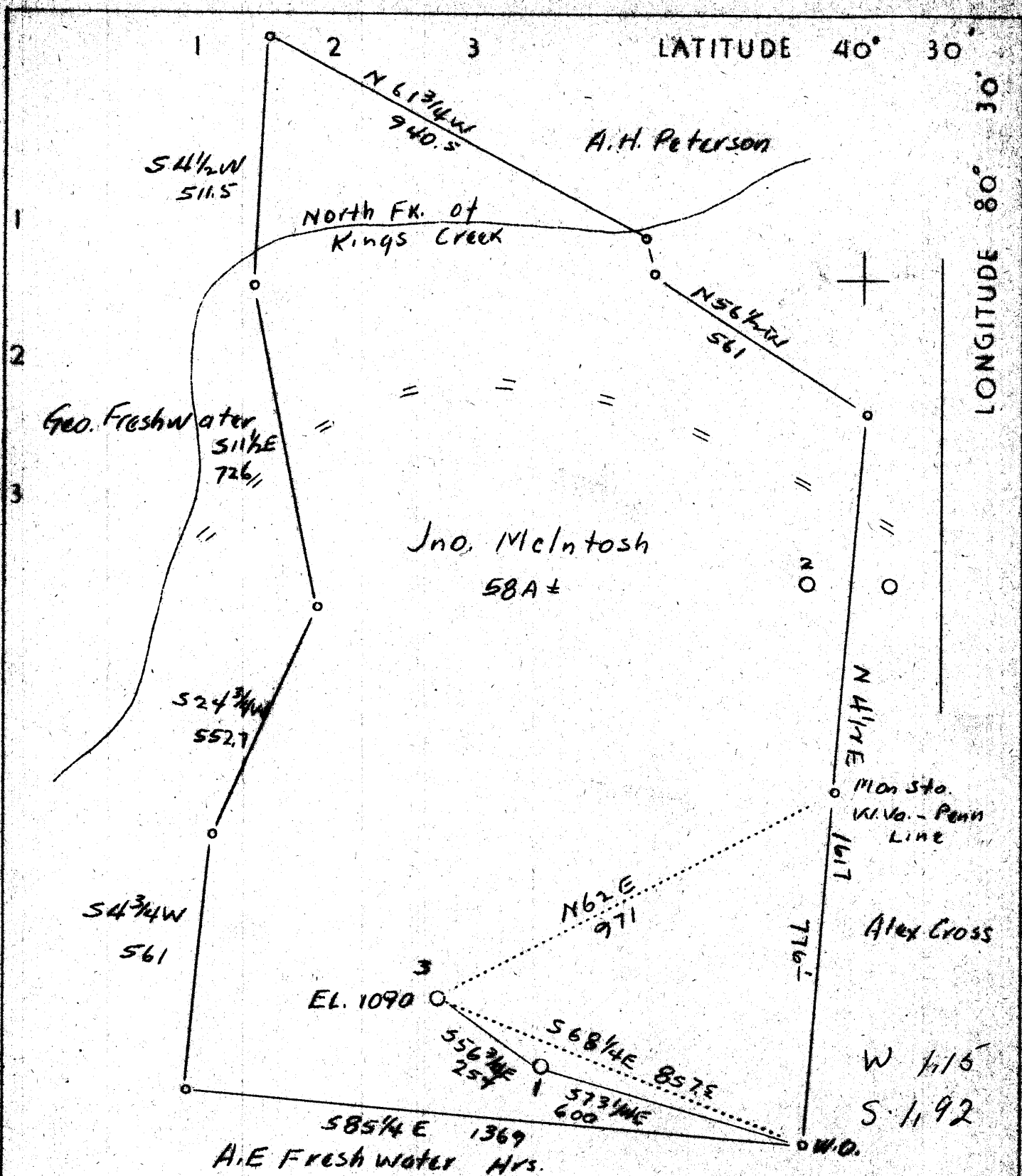
15' Quad _____
(sec.)

7.5' Quad Winton

District Clay

WELL LOCATION PLAT

County 029 Permit 30014



Abd

Company	John McIntosh
Address	New Cumberland
Farm	John McIntosh
Tract	2
Acres	58 plus
Well (Farm) No.	3
Quadrangle	Steubenville N.E.
Elevation	=
County	Hancock
District	Clay
Engineer	W. H. Ramp
Eng. Reg. No.	386
Drawing No.	1
Date	Sept. 29, 1939
Scale	1" = 300'

STATE OF WEST VIRGINIA
 Department of Mines
 OIL & GAS DIVISION
 Charleston

WELL LOCATION MAP

File No. HAN-14A

x Denotes location of well on U.S. Topographic maps, scale 1 to 62,500, latitude and longitude lines being represented by border lines as shown.

* Denotes one inch spaces on border line of original tractage