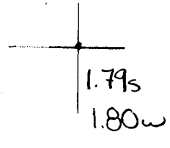


40°35'00"

Latitude

80°32'30"

Longitude



Topo Location

7.5' Loc. \_\_\_\_\_ 15' Loc. \_\_\_\_\_  
 \_\_\_\_\_ (calc.) \_\_\_\_\_

#78 OBH Co Rept

Company Manufact Lt & Ht Co

Farm Harry B Moore #3

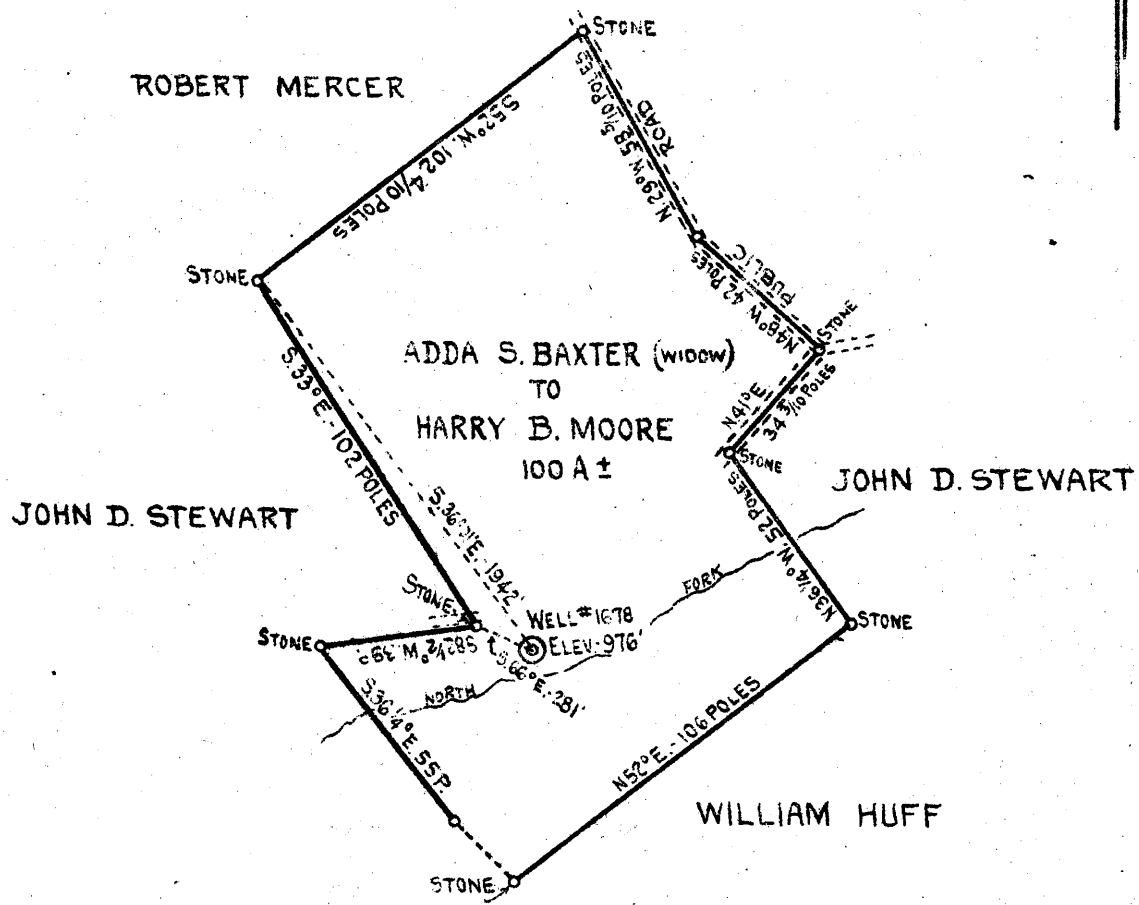
15' Quad \_\_\_\_\_  
(sec.)

7.5' Quad East Liverpool South

District Clay

**WELL LOCATION PLAT**

County 029 Permit 30019



COAL NOW OWNED BY  
 W.C. & EVA. HUFF.

w - 4.05  
 s - 1.8

- New Location...
- Drill Deeper...
- Abandonment...

Company THE MANUFACTURERS LIGHT & HEAT CO.  
 Address 800-UNION TRUST BLDG - PITTSBURGH PA.  
 Farm HARRY B. MOORE  
 Tract Acres 100 ± Lease No. 2811  
 Well (Farm) No. 3 Serial No. 1678  
 Elevation (Spirit Level) 976'  
 Quadrangle WELLSVILLE - S.E. 1/4  
 County HANCOCK District CLAY  
 Engineer Donald H. Bell  
 Engineer's Registration No.  
 File No. Drawing No. Y-8-602  
 Date FEBRUARY 1, 1940 Scale - 1" = 800'

STATE OF WEST VIRGINIA  
 DEPARTMENT OF MINES  
 OIL AND GAS DIVISION  
 CHARLESTON

WELL LOCATION MAP  
 File No. HAN-13A

Denotes location of well on United States Topographic Maps, scale 1 to 62,500, latitude and longitude lines being represented by border lines as shown.  
 --- Denotes one inch spaces on border line of original tracing.

Grant District, Hancock County, W. Va.

By The Manufacturers Light & Heat Co., 300 Union Trust Bldg.,  
Pittsburgh, Pa.

Abandoned under permit Han-19-A.

On 100 acres.

Elevation, 976' L.

Surface owned by W. C. Huff, R. D. 1, Chester, W. Va., and  
minerals by The Manufacturers Light & Heat Co., Pittsburgh, Pa.

Drilling commenced Sept. 27, 1913; completed, Oct. 10, 1913.

Shot Oct. 13, 1913.

Open flow 11/20ths water in 6 $\frac{1}{4}$ ".

Rock pressure, 112 lbs.

12" casing, 12'; 8 $\frac{1}{2}$ ", 123'; 6 $\frac{1}{4}$ ", 486'; all left in.

Coal was encountered at 100-102'.

Gas well. Abandonment reported to Dept. of Mines Feb. 1, 1940.

Record to RCT from Mrs. Griffith February 7, 1940.

	Top.	Bottom.
Clay	0 -	5
Hurry-up Sand	5 -	100
Coal	100 -	102
Fire clay	102 -	107
Slate	107 -	110
Fire clay	110 -	125
Limestone	125 -	130
Slate	130 -	270
Salt Sand (sand broken)	270 -	320
Slate	320 -	365
Sand	365 -	375
Slate	375 -	435
Big Injun Sand	435 -	475
Slate	475 -	715
Blue rock	715 -	755
Black slate	755 -	796
Berea Grit Sand (gas at 804'; sand very hard)	796 -	804
Total depth		817

# 78 OBN Co Rept

19A

Grant District, Hancock County, W. Va.

By The Manufacturers Light & Heat Co., 800 Union Trust Bldg.,  
Pittsburgh, Pa.

Abandoned under permit Han-.....-A.

On 100 acres.

Elevation, 976' L.

Surface owned by W. C. Huff, R. D. 1, Chester, W. Va., and  
minerals by The Manufacturers Light & Heat Co., Pittsburgh, Pa.

Drilling commenced Sept. 27, 1913; completed, Oct. 10, 1913.

Shot Oct. 13, 1913.

Open flow 11/20ths water in 6 $\frac{1}{4}$ ".

Rock pressure, 112 lbs.

12" casing, 12'; 8 $\frac{1}{2}$ " , 123'; 6 $\frac{1}{2}$ " , 486'; all left in.

Coal was encountered at 100-102'.

Gas well. Abandonment reported to Dept. of Mines Feb. 1, 1940.

Record to RCT from Mrs. Griffith February 7, 1940.

	Top.	Bottom.
Clay	0 -	5
Hurry-up Sand	5 -	100
Coal	100 -	102
Fire clay	102 -	107
Slate	107 -	110
Fire clay	110 -	125
Limestone	125 -	130
Slate	130 -	270
Salt Sand (sand broken)	270 -	320
Slate	320 -	365
Sand	365 -	375
Slate	375 -	435
Big Injun Sand	435 -	475
Slate	475 -	715
Blue rock	715 -	755
Black slate	755 -	796
Berea Grit Sand (gas at 804'; sand very hard)	796 -	804
Total depth		817