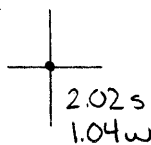


40°32'30"

Latitude

80°30'00"

Longitude



Top Location

7.5' Loc. _____ 15' Loc. _____
 _____ (calc.) _____

Company Murray + Miller

Farm WN Miller #4

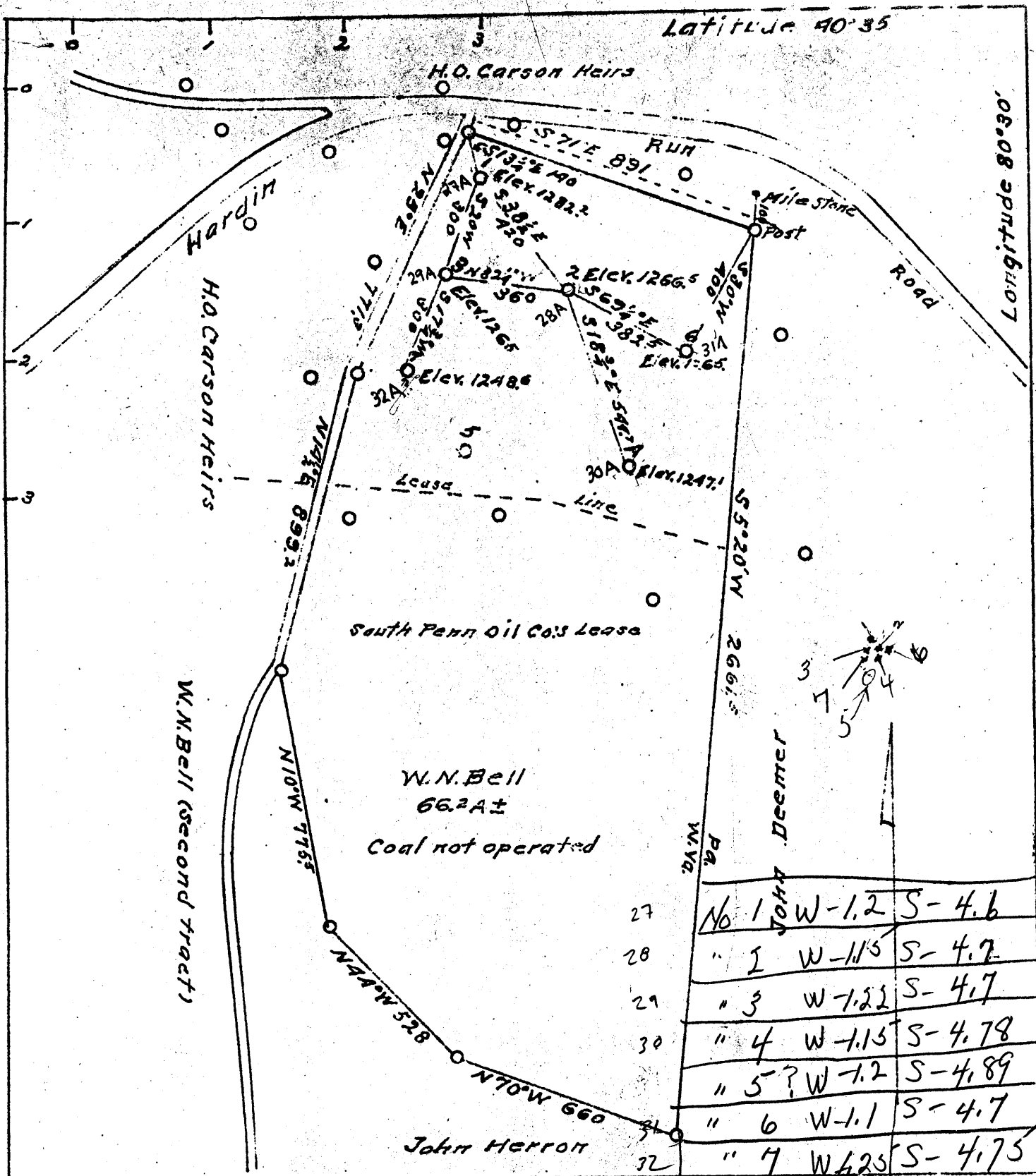
15' Quad _____
(sec.)

7.5' Quad East Liverpool South

District Clay

WELL LOCATION PLAT

County 029 Permit 30030



Company Murray & Miller
 Address Chester, W. Va.
 Farm W.N. Bell
 Tract One Acres 66.2± Lease No.
 Well (Farm) Nos. 1, 2, 3, 4, 6 & 7 Serial No.
 Quadrangle Wellsville S.E.
 County Hancock
 District Clay
 Engineer
 Engineer's Registration No.
 File No. Drawing No. One
 Date August 29, 1940.
 Scale 1 inch = 400 Feet

STATE OF WEST VIRGINIA
 Department of Mines
 Oil and Gas Division
 Charleston
 WELL LOCATION MAP
 File No. HAN-27A-32A INC
 WELLS No 1 - 7 INC.
 + Denotes location of well on
 United States Topographic Maps,
 scale 1 to 62,500, latitude and
 longitude lines being
 represented by border lines as
 shown.
 - Denotes one inch spaces on
 border lines of original tracing.

.....District, Hancock County, W. Va.
Drilled by Murray & Miller.
7 mi. S. E. of Chester.
Made about 25 bbls. at start.

	Top.	Bottom.
Bottom of Big Injun Sand		900
Berea Sand, (top)	1253	2280
Total depth		2266