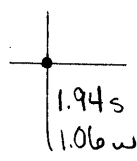


40°32'30"

Latitude

89°30'00"

Longitude



Topo Location

7.5' Loc. \_\_\_\_\_ 15' Loc. \_\_\_\_\_  
 \_\_\_\_\_ (calc.) \_\_\_\_\_

Company Murray + Miller

Farm WN Beld # 6

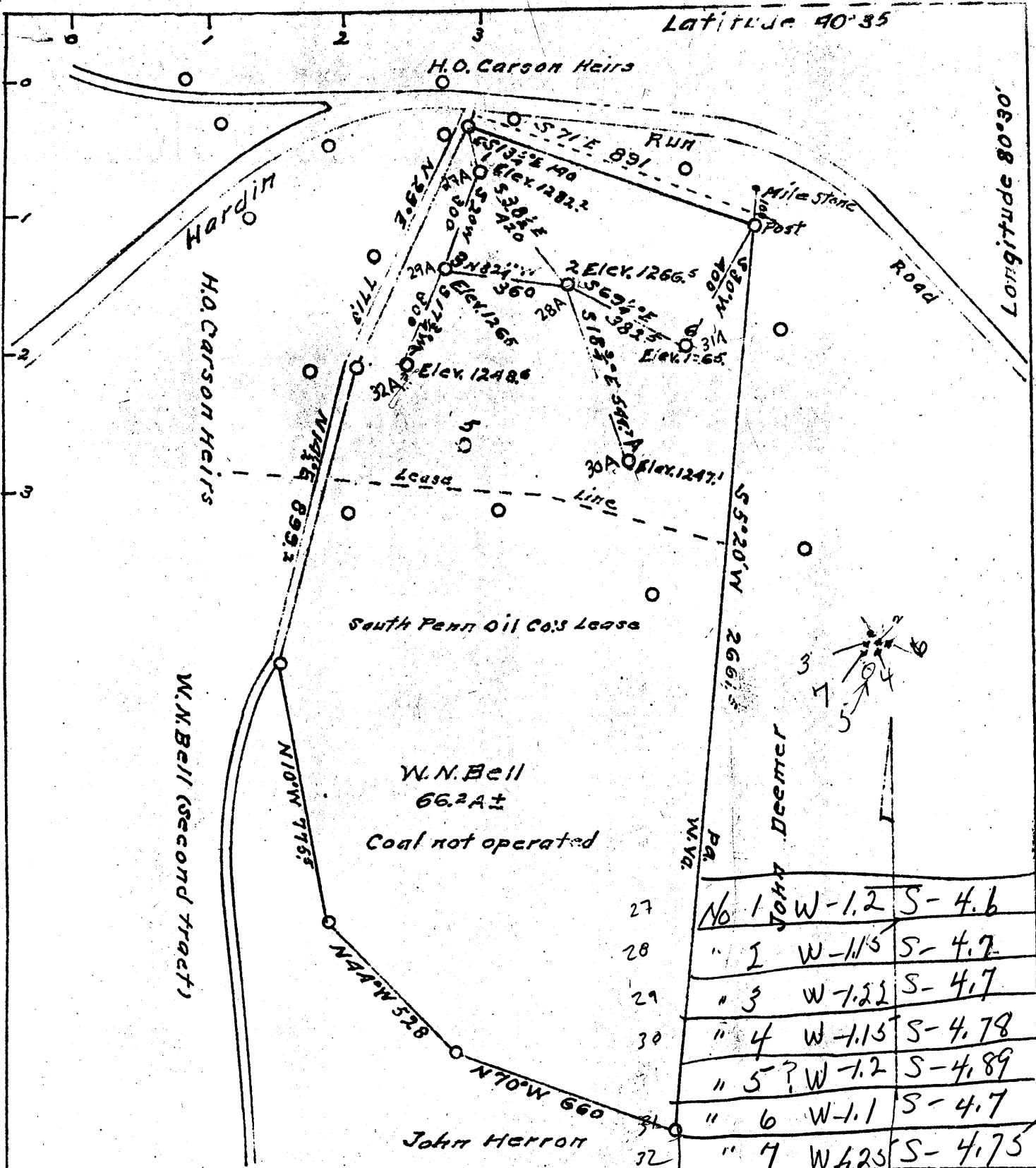
15' Quad \_\_\_\_\_  
(sec.)

7.5' Quad East Liverpool South

District Clay

**WELL LOCATION PLAT**

County 029 Permit 30031



Company Murray & Miller  
 Address Chester, W. Va.  
 Farm W.N. Bell  
 Tract One Acres 66.2± Lease No.  
 Well (Farm) Nos. 1, 2, 3, 4, 5 & 7 Serial No.  
 Quadrangle Wellsville SE  
 County Hancock  
 District Clay  
 Engineer  
 Engineer's Registration No.  
 File No. Drawing No. One  
 Date August 22, 1940.  
 Scale 1 inch = 400 Feet

STATE OF WEST VIRGINIA  
 Department of Mines  
 Oil and Gas Division  
 Charleston  
 WELL LOCATION MAP  
 File No. HAN-27A-32A INC  
 WELLS No. 1 - 7 INC.  
 + Denotes location of well on  
 United States Topographic Maps,  
 scale 1 to 62,500, latitude and  
 longitude lines being  
 represented by border lines as  
 shown.  
 - Denotes one inch spaces on  
 border lines of original tracing.