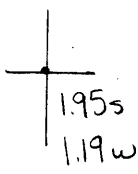


40°32'30"

Latitude

80°30'00"

Longitude



Topo Location

7.5' Loc. _____ 15' Loc. _____
 _____ (calc.) _____

Company Murray & Miller

Farm W.N. Bell # 7

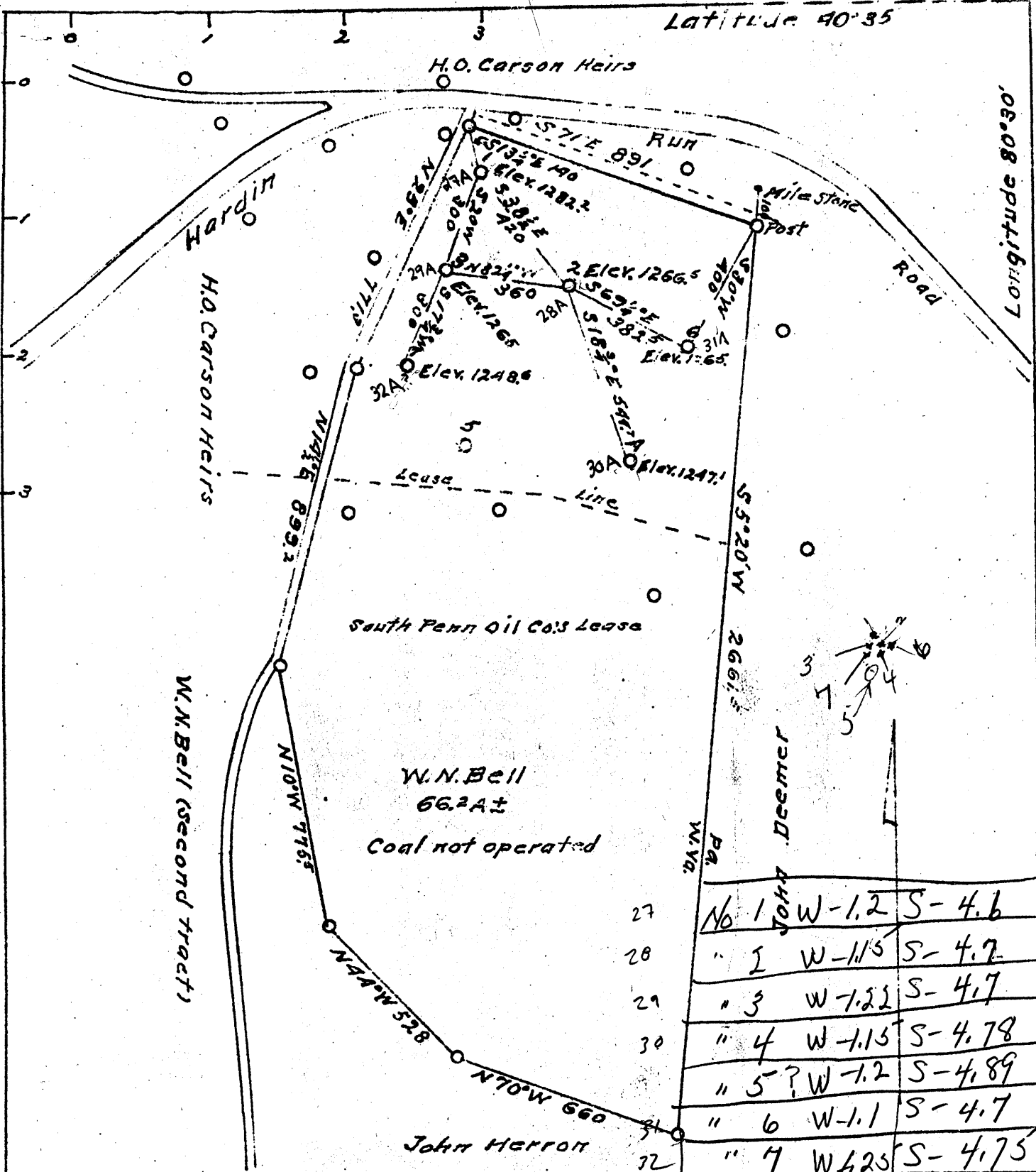
15' Quad _____
(sec.)

7.5' Quad East Liverpool South

District Clay

WELL LOCATION PLAT

County 029 Permit 30032



Company Murray & Miller
 Address Chester, W. Va.
 Farm W.N. Bell
 Tract One Acres 66.2± Lease No.
 Well (Farm) Nos. 1, 2, 3, 4, 6 & 7 Serial No.
 Quadrangle Wellsville S.E.
 County Hancock
 District Clay
 Engineer
 Engineer's Registration No.
 File No. Drawing No. One
 Date August 29, 1940.
 Scale 1 inch = 400 Feet

STATE OF WEST VIRGINIA
 Department of Mines
 Oil and Gas Division
 Charleston

WELL LOCATION MAP
 File No. HAN-27A-32A INC
 WELLS No. 1 - 7 INC.
 + Denotes location of well on
 United States Topographic Maps,
 scale 1 to 62,500, latitude and
 longitude lines being
 represented by border lines as
 shown.

- Denotes one inch spaces on
 border lines of original tracing.

.....District, Hancock County, W. Va.
Obtained by W. T. Griswold.
Authority, A. B. Smith.
From WTC Wellsville note book, p. 61.
Record from U. S. Geological Survey, April 8, 1939.

~~Top~~-of-Sand (Berea)

Top. Bottom.
1314 - 1340