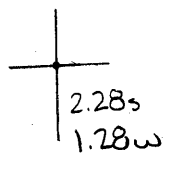


40°35'00"

Latitude

80°30'00"

Longitude



Topo Location

7.5' Loc. _____ 15' Loc. _____
 _____ (calc.) _____

Company John Murray

Farm R H Stewart #2

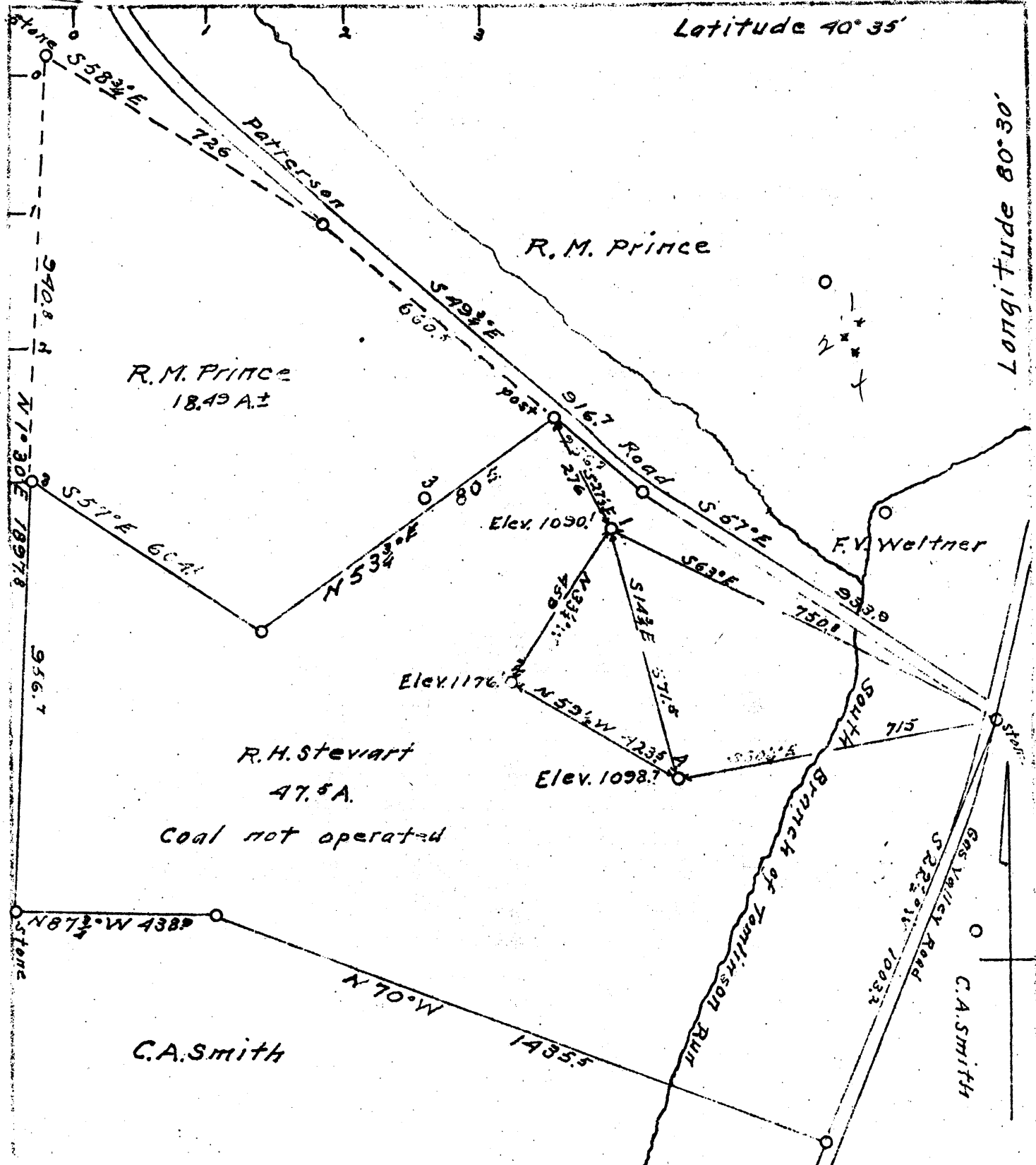
15' Quad _____
(sec.)

7.5' Quad East Liverpool South

District Clay

WELL LOCATION PLAT

County 029 Permit 30034



Company JOHN MURRAY
 Address Chester, W. Va.
 Farm R.H. Stewart
 tract ONE Acres 47.5±
 Well (Farm) No 1, 2 & 4
 Quadrangle Wellsville S.V.
 County Hancock
 District Clay
 Date August 3, 1938
 Scale 1 inch = 300 Feet

1 { W 1.25'
 S 2.3 4 { W 1.28
 S 2.55'
 2 { W 1.35'
 S 2.45'

File No. HAN-33A-35M
 WELLS 1-2-4