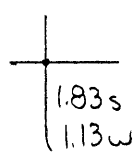


Latitude

Longitude



Topo Location

7.5' Loc. _____ 15' Loc. _____
 _____ (calc.) _____

Company John Murray

Farm SA Richmond #2

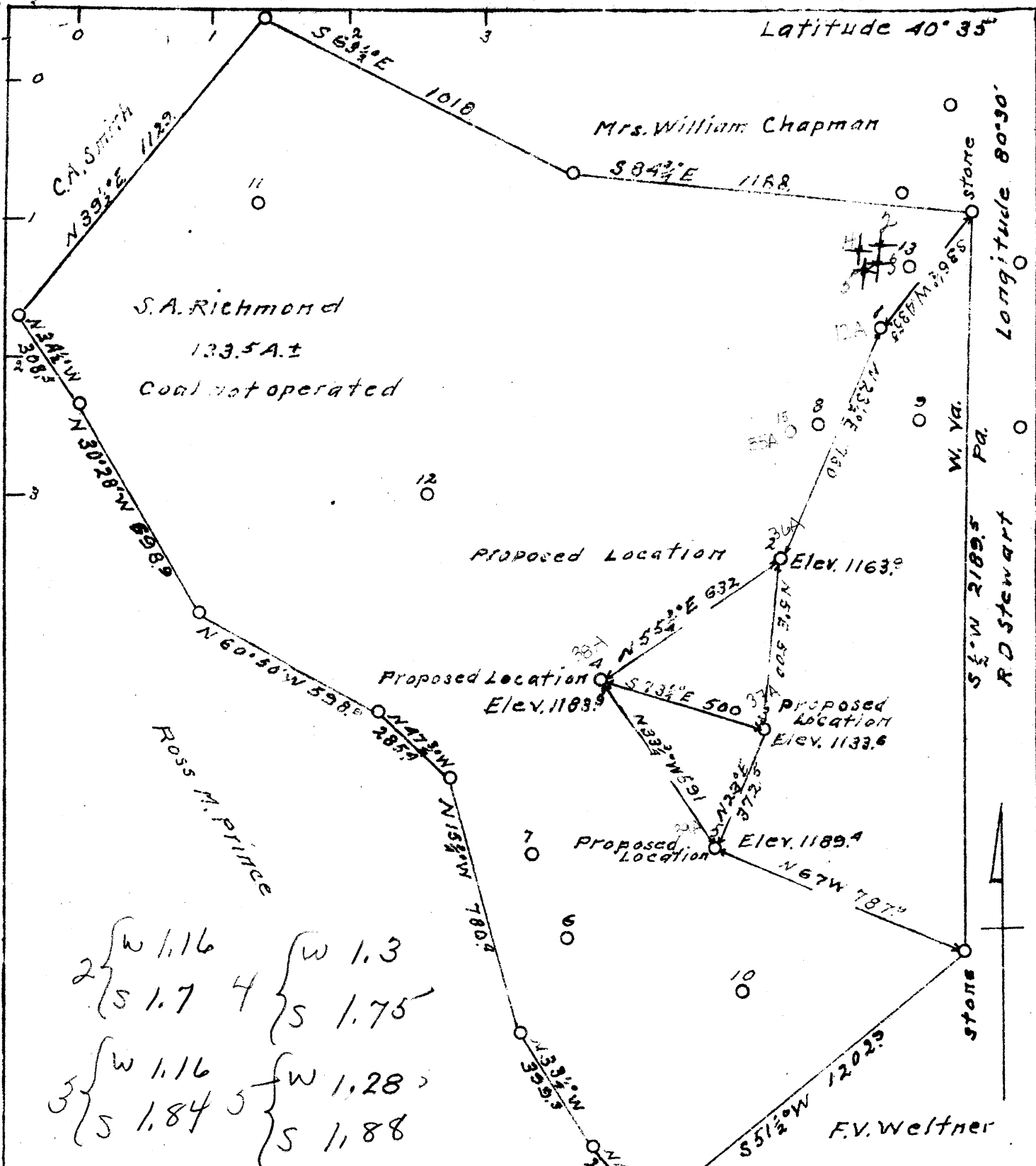
15' Quad _____
(sec.)

7.5' Quad East Liverpool South

District Clay

WELL LOCATION PLAT

County 029 **Permit** 30036



Company John Murray
 Address Chester, W. Va.
 Farm S.A. Richmond
 Tract One Acres 133.5± Lease No.
 Well (Farm) No. 2, 3, 4, 5 Serial No.
 Quadrangle Wellsville *SE*
 County Hancock
 District Clay
 Engineer *O. B. Morris*
 Engineer's Registration No. 916
 File No. Drawing No. Two
 Date Sept. 17, 1940.
 Scale 1 inch = 400 Feet

STATE OF WEST VIRGINIA
 Department of Mines
 Oil and Gas Division
 Charleston
 WELL LOCATION MAP
 File No. *HAN-36-37 & 38-39A*
 WELLS 2-3 & 4-5
 + Denotes location of well on
 United States Topographic
 Maps, scale 1 to 62,500, latitude
 and longitude lines being
 represented by border lines
 as shown.
 - Denotes one inch spaces on
 border lines of original tracing.