

40° 35' 00"

Latitude

80° 30' 00"

Longitude



Topo Location

7.5' Loc. _____ 15' Loc. _____
 _____ (calc.) _____

Company John Murray

Farm SA Richmond #4

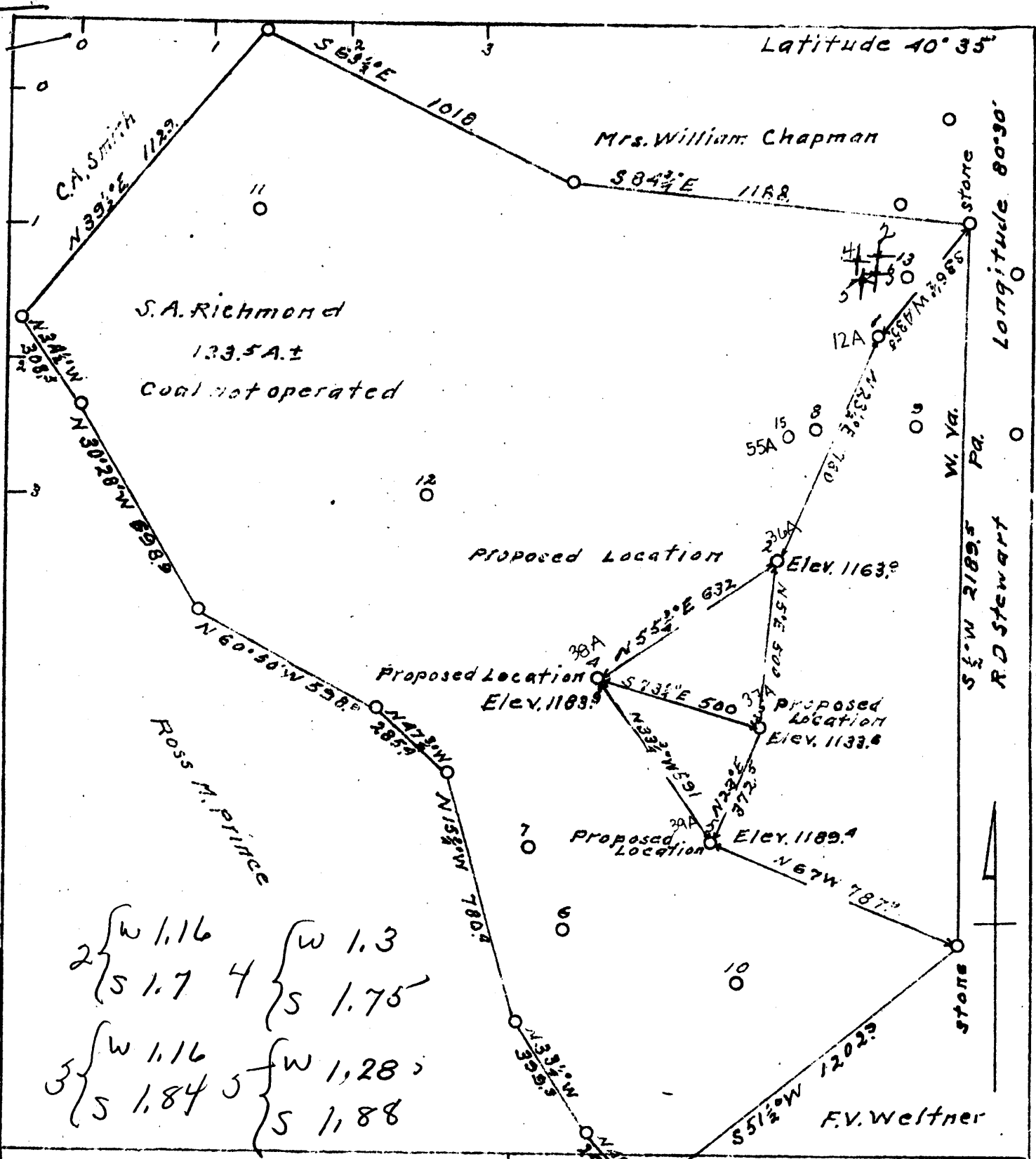
15' Quad _____
(sec.)

7.5' Quad East Liverpool South

District Clay

WELL LOCATION PLAT

County 029 Permit 30038



2 { w 1.16
 { s 1.7 4 { w 1.3
 { s 1.75
 3 { w 1.16 5 { w 1.28
 { s 1.84 { s 1.88

Company John Murray
 Address Chester, W. Va.
 Farm S.A. Richmond
 Tract One Acres 133.5± Lease No.
 Well (Farm) No. 2, 3, 4, 5 Serial No.
 Quadrangle Wellsville S.C.
 County Hancock
 District Clay
 Engineer O.B. Morris
 Engineer's Registration No. 916
 File No. Drawing No. Two
 Date Sept. 17, 1940.
 Scale 1 inch = 400 Feet

STATE OF WEST VIRGINIA
 Department of Mines
 Oil and Gas Division
 Charleston
 WELL LOCATION MAP
 File No. HAN-36-37 & 38-39A
 WELLS 2-3 & 4-5
 + Denotes location of well on
 United States Topographic
 Maps, scale 1 to 62,500, latitude
 and longitude lines being
 represented by border lines
 as shown.
 - Denotes one inch spaces on
 border lines of original tracing.

Hancock 38A

.....District, Hancock County, W. Va.
James Murray.
4 $\frac{1}{2}$ mi. S. E. of Chester.
5-bbl. well.

	Top.	Bottom.
Coal	240	
Big coal	520	
Salt Sand	610	
Bottom of Big Injun Sand		883
Berea Sand, to bottom (oil)	1212	1254