

40°37'30"

Latitude

80°37'30"

Longitude

2.44s
.93w

Topo Location

7.5' Loc. _____ 15' Loc. _____
 _____ (calc.) _____

Company RJ Braden Co

Farm CE Bremmaman #44

15' Quad _____
(sec.)

7.5' Quad Wellsville

District Grant

WELL LOCATION PLAT

County 029 Permit 30043

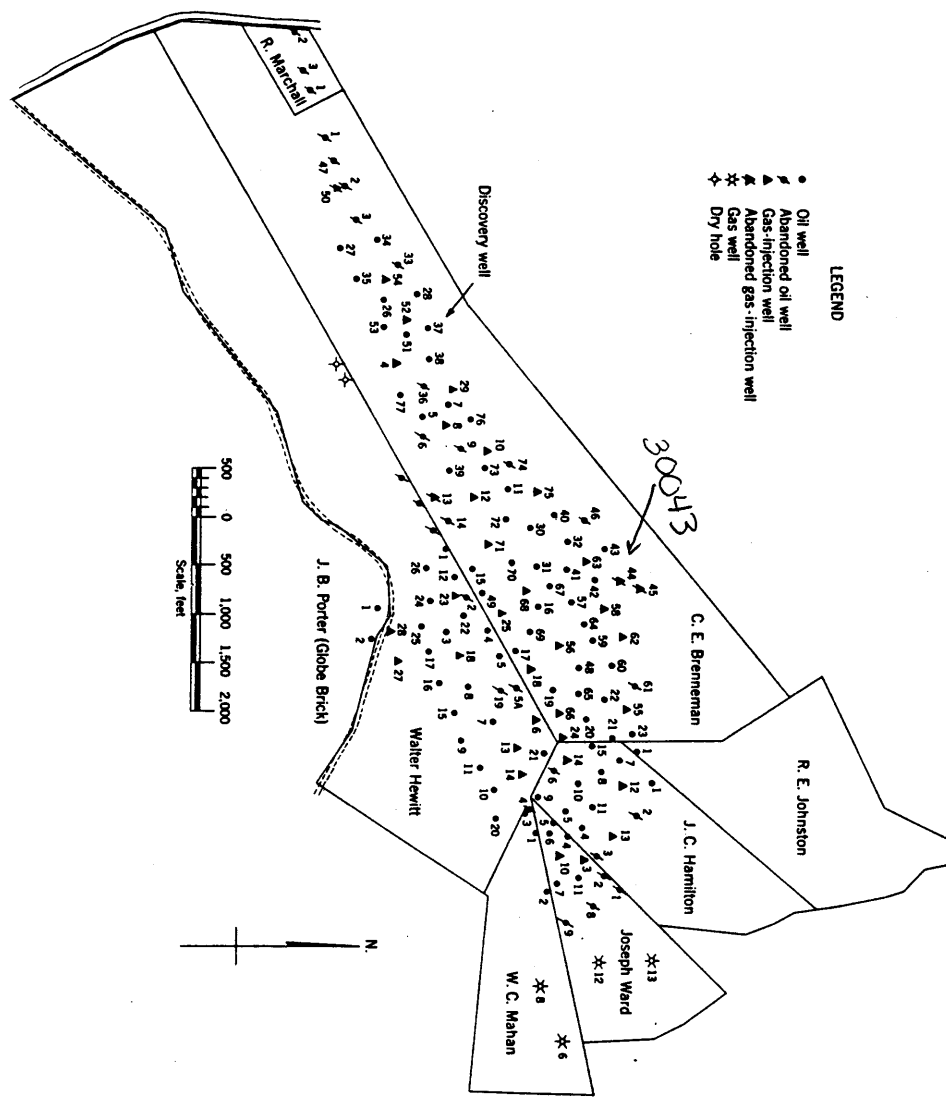
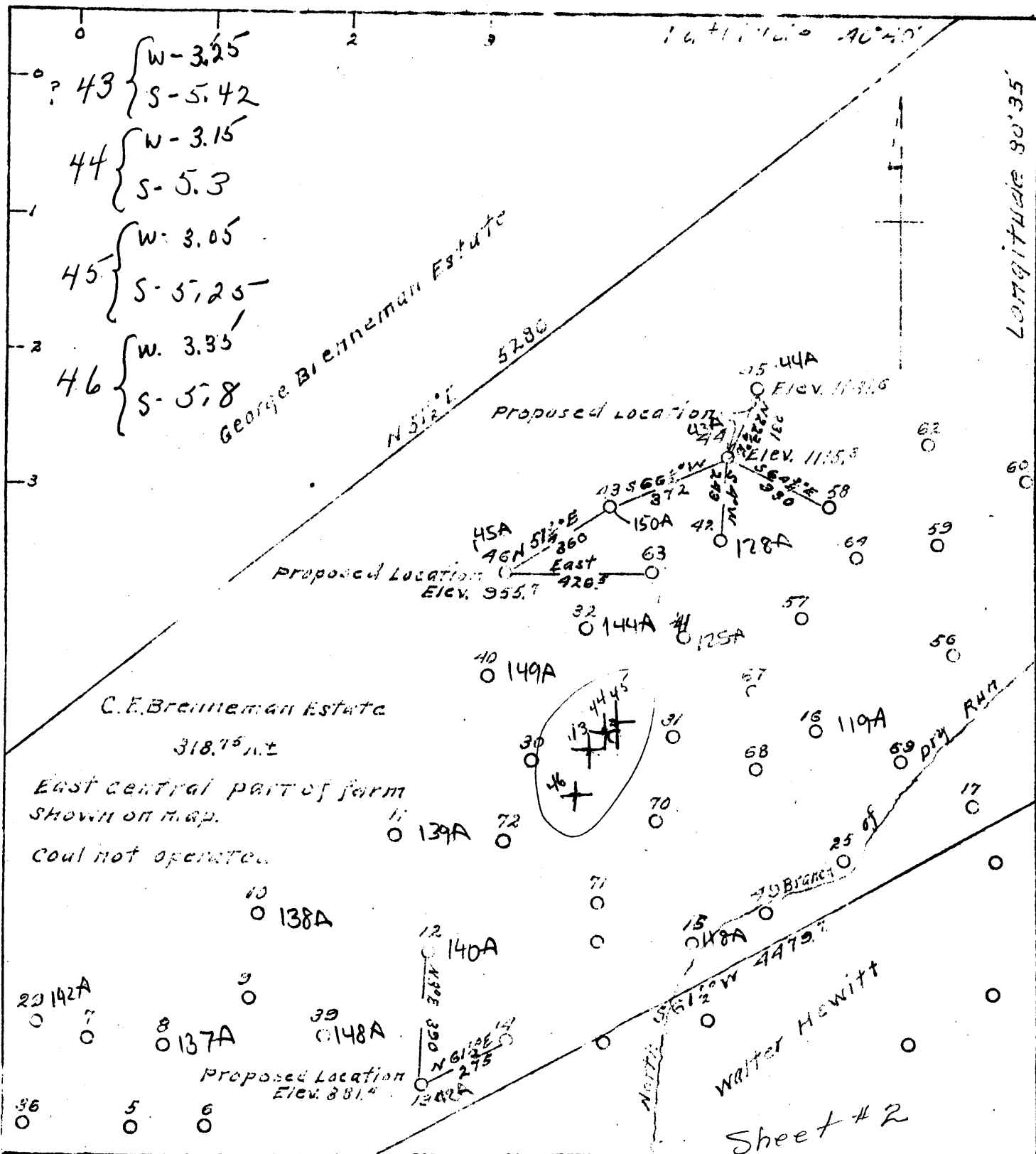


Figure 1. - Ownership map of Brenneman field, Hancock County, W. Va., showing location and status of wells on December 31, 1948.



Company R.J. Braden Co.
 Address Marietta, Ohio
 Farm C.E. Brenneman Estate
 Tract One Acres 318.75 Lease No.
 Well (Farm) Nos. 13, 44, 45 & 46 Serial No.
 Quadrangle Wausville
 County Hancock
 District Grant
 Engineer
 Engineer's Registration No.
 File No. Drawing No. Eleven
 Date Sept. 13, 1940
 Scale 1 inch = 400 Feet

STATE OF WEST VIRGINIA
 Department of Mines
 Oil and Gas Division
 Charleston

WELL LOCATION MAP

File No. HAN-42-43-44-45A
 WELLS 13-44-45-46

+ Denotes location of well on
 United States Topographic
 Maps, scale 1 to 62,500, latitude
 and longitude lines being
 represented by border lines
 as shown.

- Denotes one inch spaces on
 border lines of original
 tracing.