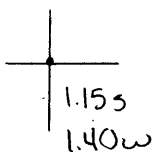


40° 30' 00"

Latitude

80° 30' 00"



Longitude

Topo Location

7.5' Loc. _____ 15' Loc. _____
 _____ (cale.) _____

Company FM Anderson

Farm Stella M. Anderson #2

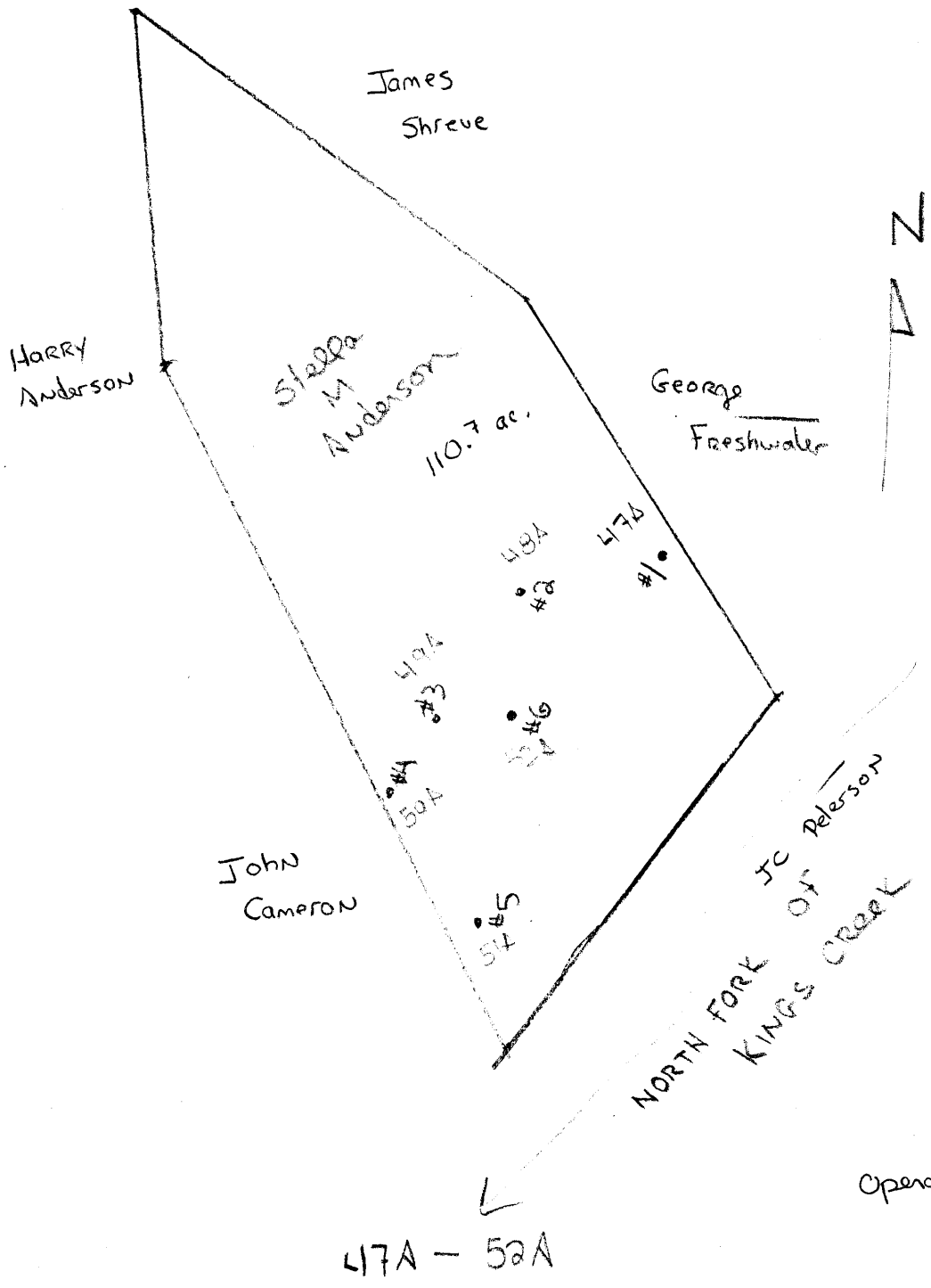
15' Quad _____
(sec.)

7.5' Quad Winton

District Clay

WELL LOCATION PLAT

County 029 Permit 30048



James Shreve

HARRY Anderson

Stella M Anderson
110.7 ac.

George Freshwater



49A #2

47B #1

49A #3

#6

#4 50A

#5

John Cameron

NORTH FORK OF PELERSON
KINGS CREEK

Operator F.M. Anderson

47A - 52A