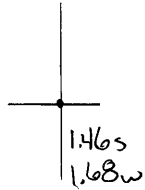


40°35'00"

Latitude

80°32'30"

Longitude



Topo Location

7.5' Loc. _____ 15' Loc. _____
 _____ (calc.) _____

Company Manufact Lt + Ht

Farm Stewart Hrs # 2

15' Quad _____
(sec.)

7.5' Quad E Liverpool South

District Grant

WELL LOCATION PLAT

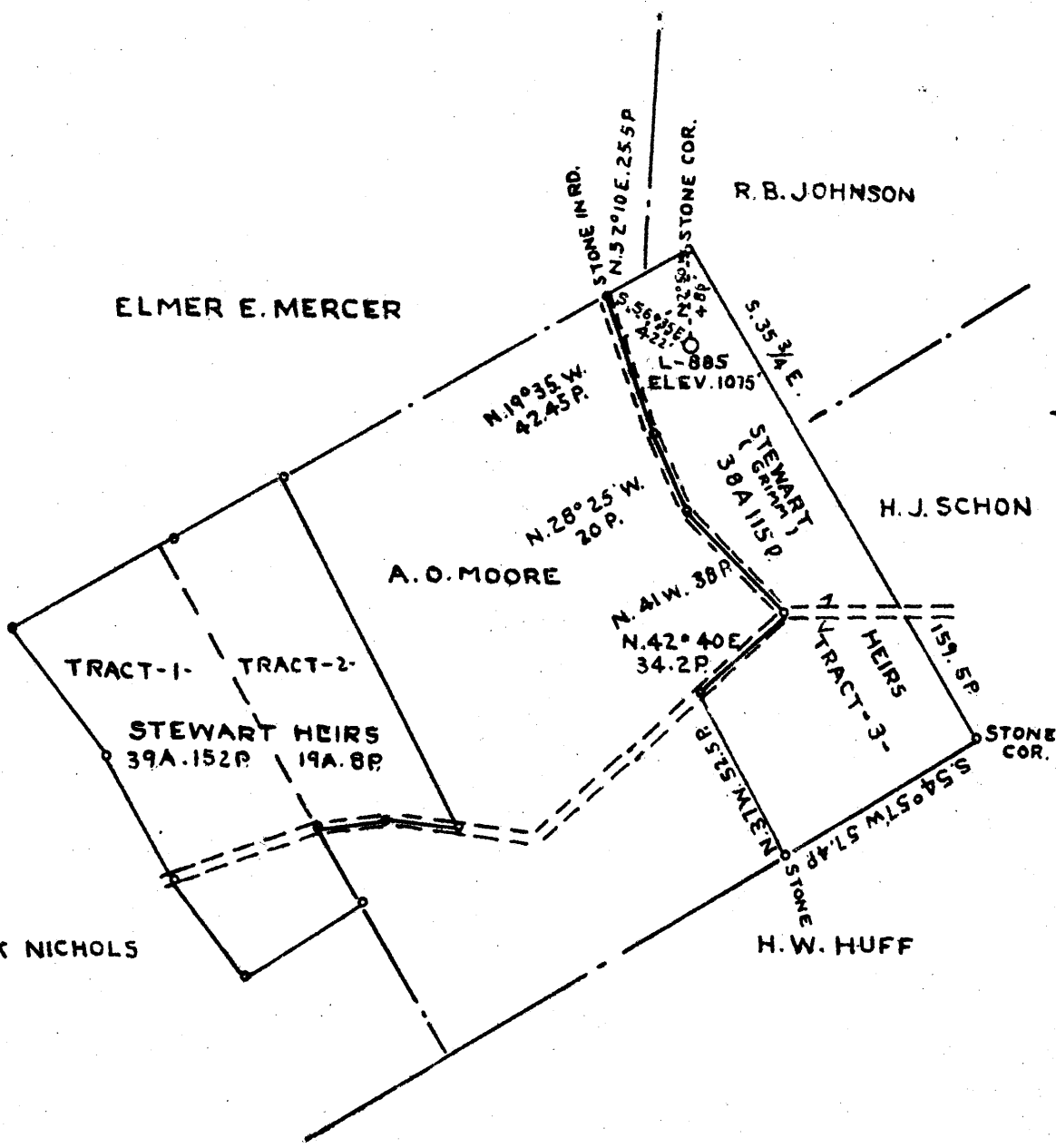
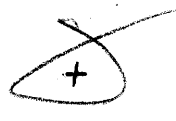
County 029 Permit 30054

0 1 2 3

1

2

3



COAL OWNED BY JAMES F. GRIM R.D. 1 - CHESTER W. VA.

1.335
3.99 W

New Location...
Drill Deeper.....
Abandonment.....

Company THE MANUFACTURERS LIGHT AND HEAT CO.
Address 800 UNION TRUST BLD'G PITTSBURGH PA.
Farm STEWART HEIRS
Tract 3 Acres 38A-115P Lease No. 2815-98
Well (Farm) No. 2 Serial No. 885
Elevation (Spirit Level) 1075'
Quadrangle WELLSVILLE SE
County HANCOCK District GRANT
Engineer J.E. Mercer
Engineer's Registration No.
File No. Drawing No. Y-10-539
Date FEBRUARY-11-1942 Scale 1" = 800'

STATE OF WEST VIRGINIA
DEPARTMENT OF MINES
OIL AND GAS DIVISION
CHARLESTON

WELL LOCATION MAP

File No. *Han-54-A*

- Denotes location of well on United States Topographic Maps, scale 1 to 62,500, latitude and longitude lines being represented by border lines as shown.

- Denotes one inch spaces on border line of original tracing.

STEWART HEIRS NO. 2 (885) WELL.

4/10/1910
Not located.

Grant District, Hancock County, W. Va.
Manufacturers L&H Co.
Gas well.

No record.