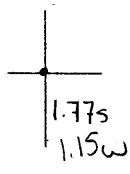


40° 35' 00"

Latitude

80° 30' 00"

Longitude



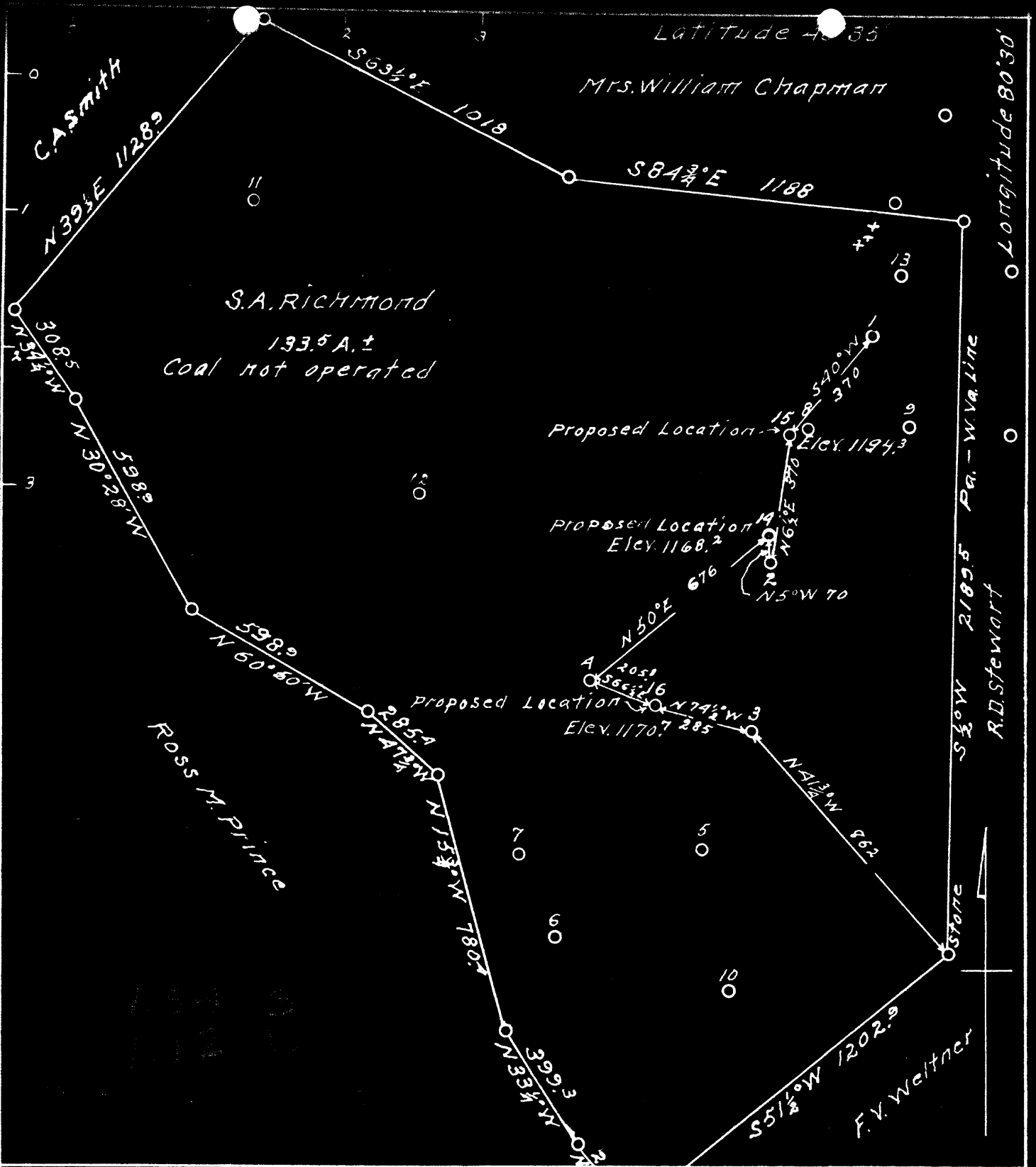
Topo Location

7.5' Loc. _____ 15' Loc. _____
 _____ (calc.) _____

Company SM+W Oil Co
 Farm SA Richmond # 15
 15' Quad _____
 (sec.)
 7.5' Quad East Liverpool South
 District Grant

WELL LOCATION PLAT

County 029 Permit 30055



Company S. M. & W. Oil Co.
 Address Uniontown, Pa.
 Farm S.A. Richmond
 Tract One Acres 133.5 ± Lease No.
 Well (Farm) Nos. 14, 15 & 16 Serial No.
 Quadrangle Wellsville
 County Hancock
 District Grant
 Engineer W. St. Ramp
 Engineer's Registration No. 386
 File No. Drawing No. Three
 Date Dec. 23, 1941
 scale 1 inch = 400 Feet

STATE OF WEST VIRGINIA
 Department of Mines
 Oil and Gas Division
 Charleston

WELL LOCATION MAP

File No. *HAN 55 441*

+ Denotes location of well on United States Topographic Maps, scale 1 to 62,500, latitude and longitude lines being represented by border lines as shown.

- Denotes one inch spaces on border lines of original tracing.