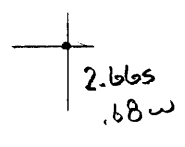


40°37'30"

Latitude

80°37'30"

Longitude



Topo Location

7.5' Loc. _____ 15' Loc. _____
 _____ (calc.) _____

Company RJ Braden Co

Farm Walter Hewitt #19

15' Quad _____
(sec.)

7.5' Quad Wellsville

District Grant

WELL LOCATION PLAT

County 029 Permit 30059

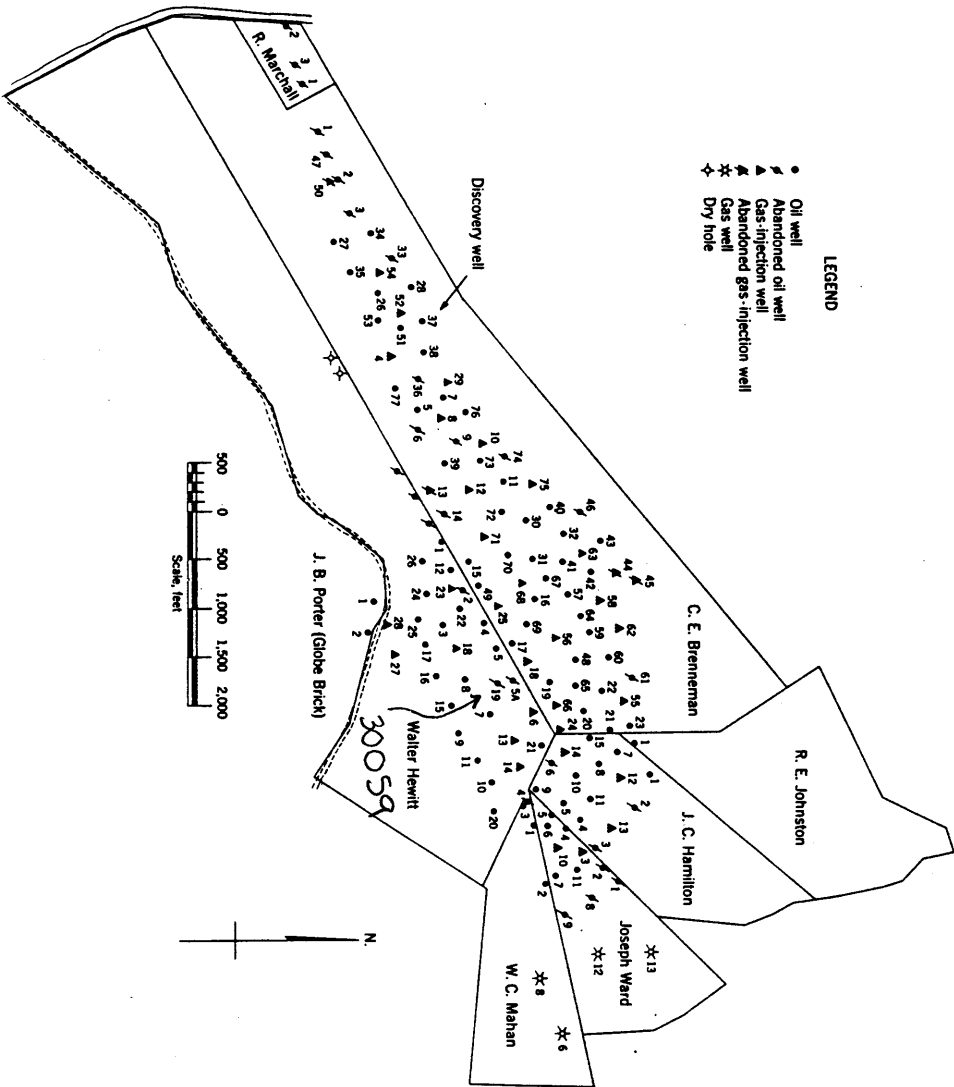
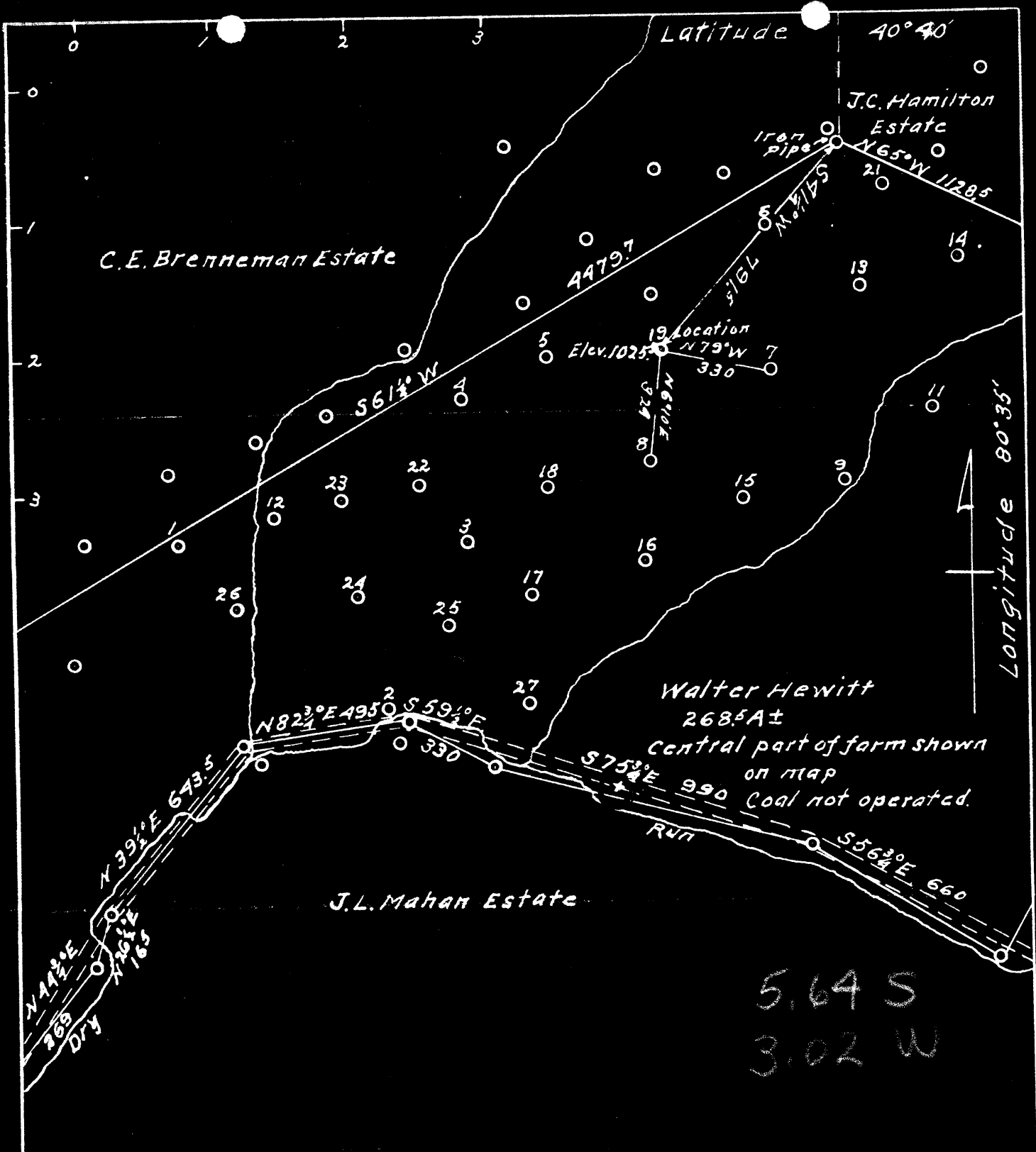


Figure 1. - Ownership map of Brenneman field, Hancock County, W. Va., showing location and status of wells on December 31, 1948.



Company R.J. Braden Co.
 Address Marietta Ohio.
 Farm Walter Hewitt
 Tract One Acres 268.5± Lease No.
 Well (Farm) No. 19 Serial No.
 Quadrangle Wellsville
 County Hancock
 District Grant
 Engineer *W. H. Fisher*
 Engineer's Registration No. 828
 File No. Drawing No. Seven
 Date July 29, 1943.
 Scale 1 inch = 400 Feet

STATE OF WEST VIRGINIA
 Department of Mines
 Oil and Gas Division
 Charleston

WELL LOCATION MAP

File No. HAN-59-A #19

+ Denotes location of well on United States Topographic Maps, scale 1 to 62,500, latitude and longitude lines being represented by border lines as shown.

- Denotes one inch spaces on border lines of original tracing.