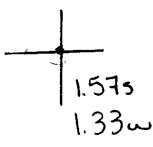


40°32'30"

Latitude

80°30'00"

Longitude



**Topo Location**

7.5' Loc. \_\_\_\_\_ 15' Loc. \_\_\_\_\_  
 \_\_\_\_\_ (calc.) \_\_\_\_\_

**Company** GW & C M Dawson

**Farm** H O Carson Hrs #1

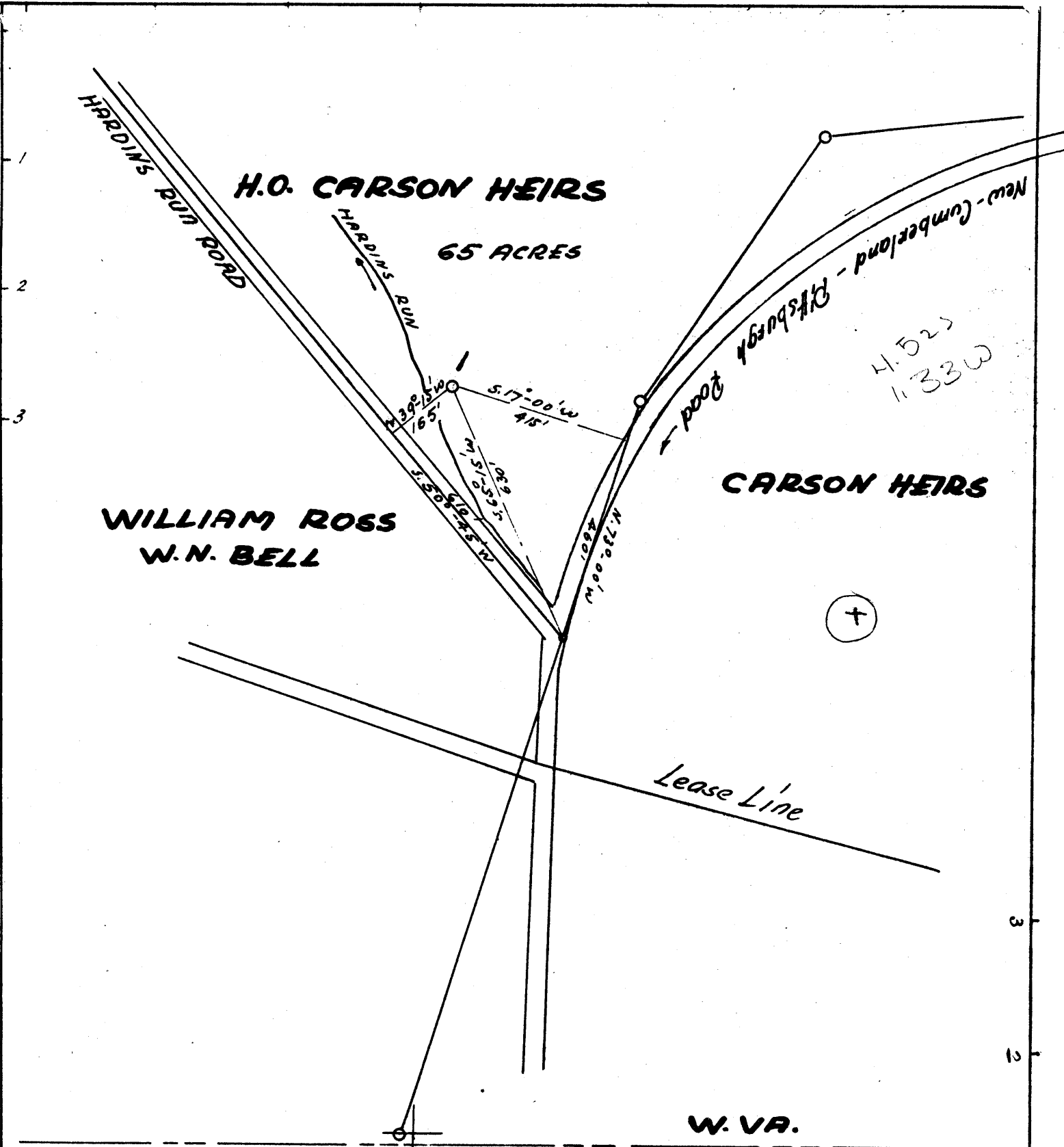
**15' Quad** \_\_\_\_\_  
(sec.)

**7.5' Quad** East Liverpool South

**District** Clay

**WELL LOCATION PLAT**

**County** 029 **Permit** 30157



W. VA.  
PENNA.

Longitude 80°-30'

Latitude 40°-35'

N

New Location  
Drill Deeper  
Abandonment

Company Geo W. and C. M. Dawson  
 Address Hookstown, Pa  
 Farm H.O. Carson Heirs  
 Tract \_\_\_\_\_ Acres 65 Lease No \_\_\_\_\_  
 Well (Farm) 1 Serial No \_\_\_\_\_  
 Elevation (Spirit Level) 1265'  
 Quadrangle Wellsville  
 County Hancock District Clay  
 Engineer-Surveyor Paul Hubert  
 Engineer's Registration No \_\_\_\_\_  
 File No \_\_\_\_\_ Drawing No \_\_\_\_\_  
 Date March 17 Scale 1" = 300'

**State of West Virginia**  
 Department of Mines,  
**Oil and Gas Division**  
 Charleston

**Well Location Map**  
 File No: HAN-157-A

+ Denotes location of Well on United States Topographic Maps, scale 1 to 62,500, latitude and longitude lines being represented by border lines as shown.

- Denotes one inch spaces on border line of original tracing.



STATE OF WEST VIRGINIA  
DEPARTMENT OF MINES  
OIL AND GAS DIVISION

156

WELL RECORD

Permit No. 47-A

Oil or Gas Well Oil  
(KIND)

Company Geo. W. & C. M. Dawson  
Address Hookstown, Pa.  
Farm H. O. Carson Heirs Acres 65  
Location (waters) \_\_\_\_\_  
Well No. 1 Elev. 1265  
District Clay County Hancock  
The surface of tract is owned in fee by \_\_\_\_\_  
Address \_\_\_\_\_  
Mineral rights are owned by \_\_\_\_\_  
Address \_\_\_\_\_  
Drilling commenced \_\_\_\_\_  
Drilling completed No record  
Date Shot \_\_\_\_\_ From \_\_\_\_\_ To \_\_\_\_\_  
With \_\_\_\_\_  
Open Flow \_\_\_\_\_ /10ths Water in \_\_\_\_\_ Inch  
\_\_\_\_\_ /10ths Merc. in \_\_\_\_\_ Inch  
Volume \_\_\_\_\_ Cu. Ft.  
Rock Pressure \_\_\_\_\_ lbs. \_\_\_\_\_ hrs.  
Oil \_\_\_\_\_ bbls., 1st 24 hrs.  
Fresh water \_\_\_\_\_ feet \_\_\_\_\_ feet  
Salt water \_\_\_\_\_ feet \_\_\_\_\_ feet

Casing and Tubing	Used in Drilling	Left in Well	Packers
Size			
16			Kind of Packer _____
13			
10			Size of _____
8 1/4	Approx.		
6 5/8 <u>6 7/8</u>	<u>950</u>	<u>950</u>	Depth set _____
5 3/16			
3			Perf. top _____
2			Perf. bottom _____
Liners Used			Perf. top _____
			Perf. bottom _____

CASING CEMENTED \_\_\_\_\_ SIZE \_\_\_\_\_ No. Ft. \_\_\_\_\_ Date \_\_\_\_\_  
COAL WAS ENCOUNTERED AT \_\_\_\_\_ FEET \_\_\_\_\_ INCHES  
\_\_\_\_\_ FEET \_\_\_\_\_ INCHES FEET \_\_\_\_\_ INCHES  
\_\_\_\_\_ FEET \_\_\_\_\_ INCHES FEET \_\_\_\_\_ INCHES

Formation	Color	Hard or Soft	Top	Bottom	Oil, Gas or Water	Depth Found	Remarks
<u>Berea</u>			<u>1267</u>	<u>1307</u>			<u>No record of well available.</u>

