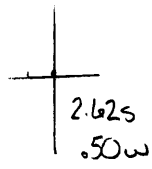


40° 35' 00"

Latitude

80° 35' 00"

Longitude



Topo Location

7.5' Loc. _____ 15' Loc. _____
 _____ (calc.) _____

#82 OBH Co Rep

Company Manufact H & H

Farm J G Pugh #1

15' Quad _____
(sec.)

7.5' Quad East Liverpool South

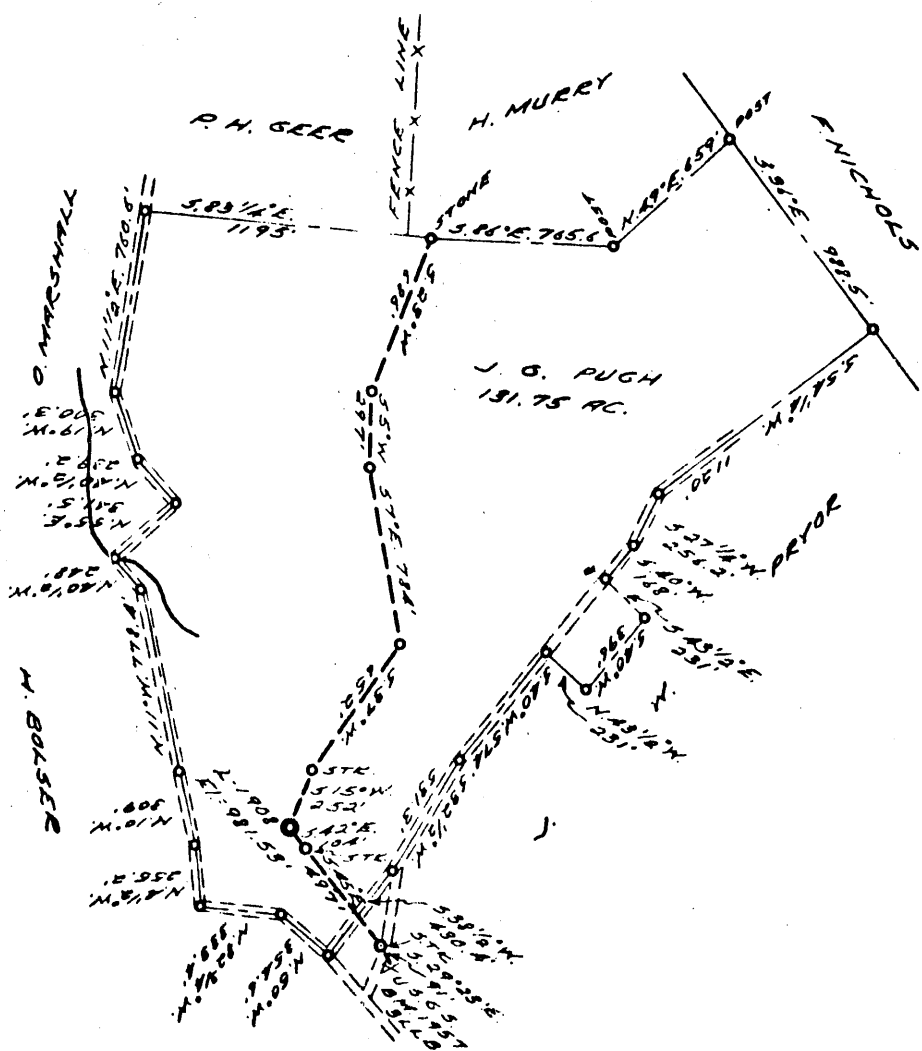
District _____

WELL LOCATION PLAT

County 029 **Permit** 169A

0 1 2 3 LATITUDE 40 ° 35 '

1
2
3 LONGITUDE 80 ° 35'



(+)
2.60S
0.54W

COAL OWNED BY _____

NEW LOCATION

DRILL DEEPER

ABANDONMENT

L-25-24

COMPANY THE MANUFACTURERS LIGHT & HEAT

ADDRESS 800 UNION TRUST BLDG., PGH. PA.

FARM J. G. PUGH

TRACT _____ ACRES 10 LEASE NO. 59-8

WELL (FARM) NO. 1 SERIAL NO. 1908

ELEVATION (SPIRIT LEVEL) 981.53'

QUADRANGLE WELLSVILLE SC

COUNTY HANCOCK DISTRICT CLAY

ENGINEER Robert M. Heill

ENGINEER'S REGISTRATION NO. 361-E. (H.L.L.)

FILE NO. _____ DRAWING NO. Y-25-492

DATE 7 MAR. 62 SCALE 1" = 800'

STATE OF WEST VIRGINIA
DEPARTMENT OF MINES
OIL AND GAS DIVISION
CHARLESTON

WELL LOCATION MAP

FILE NO. HAN-169-A

82 OBN Co Rpt.

+ DENOTES LOCATION OF WELL ON UNITED STATES TOPOGRAPHIC MAPS. SCALE 1 TO 62,500. LATITUDE AND LONGITUDE LINES BEING REPRESENTED BY BORDER LINES AS SHOWN.

— DENOTES ONE-INCH SPACES ON BORDER LINE OF ORIGINAL TRACING.

J. G. PUGH NO. 1 (1908) WELL.

Not located.

Clay District, Hancock County, W. Va.
Manufacturers L&H Co.
Gas well.

Top. Bottom.

Berea Sand

875 - 900



STATE OF WEST VIRGINIA
DEPARTMENT OF MINES
OIL AND GAS DIVISION

WELL RECORD

Quadrangle Han-169A
Permit No. Han-169A

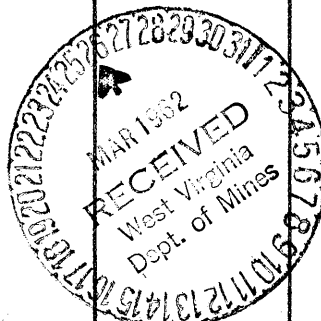
Oil or Gas Well GAS
(KIND)

Company The Mfrs. Lt. and Mt. Co.
Address 800 Union Trust Bldg., Pittsburgh 19, Pa.
Farm J. G. Pugh Acres 10
Location (waters) _____
Well No. L-1908 Elev. _____
District Clay County Hancock
The surface of tract is owned in fee by _____
Address _____
Mineral rights are owned by _____
Address _____
Drilling commenced Nov. 15, 1914
Drilling completed December 15, 1914
Date Shot - From - To -
With -
Open Flow /10ths Water in _____ Inch
/10ths Merc. in _____ Inch
Volume - Cu. Ft.
Rock Pressure _____ lbs. _____ hrs.
Oil _____ bbls., 1st 24 hrs.
Fresh water _____ feet _____ feet
Salt water _____ feet _____ feet

Casing and Tubing	Used in Drilling	Left in Well	Packers
Size			Kind of Packer
16			
13			
10			Size of
8 1/4 "	250		
6 1/4 "	605	605	Depth set
5 3/16			
3			Perf. top
2			Perf. bottom
Liners Used			Perf. top
			Perf. bottom

CASING CEMENTED _____ SIZE _____ No. Ft. _____ Date _____
COAL WAS ENCOUNTERED AT _____ FEET _____ INCHES
_____ FEET _____ INCHES FEET _____ INCHES
_____ FEET _____ INCHES FEET _____ INCHES

Formation	Color	Hard or Soft	Top	Bottom	Oil, Gas or Water	Depth Found	Remarks
Top		18	0	18			
Shale and Shells		172	18	190			
Hurry Up Sand		40	172	212			
Shale and Shells		98	212	310			
Salt Sand		65	310	375			
Shale and Shells		210	375	395			
Big Injun Sand		20	595	605			
Fire Clay		5	605	610			
Slate and Shells		185	610	795			
Squaw Sand		15	795	810			
Shells		25	810	835			
Black Shale		40	835	875			
Berea Sand		25	875	900			
Total Depth				900			
					Gas at 7 ft. in Berea 5 ft. pay sand		



OCT 6 1962

J. G. PUGH No. L-1908 (Over) M. L. E. H. G. HAN-169A

Formation	Color	Hard or Soft	Top	Bottom	Oil, Gas or Water	Depth Found	Remarks

Date March 23, 19 62

APPROVED The Manufacturers Lt. and Mt. Co., Owner

By Walter A. Perrin
Land Agent (Title)