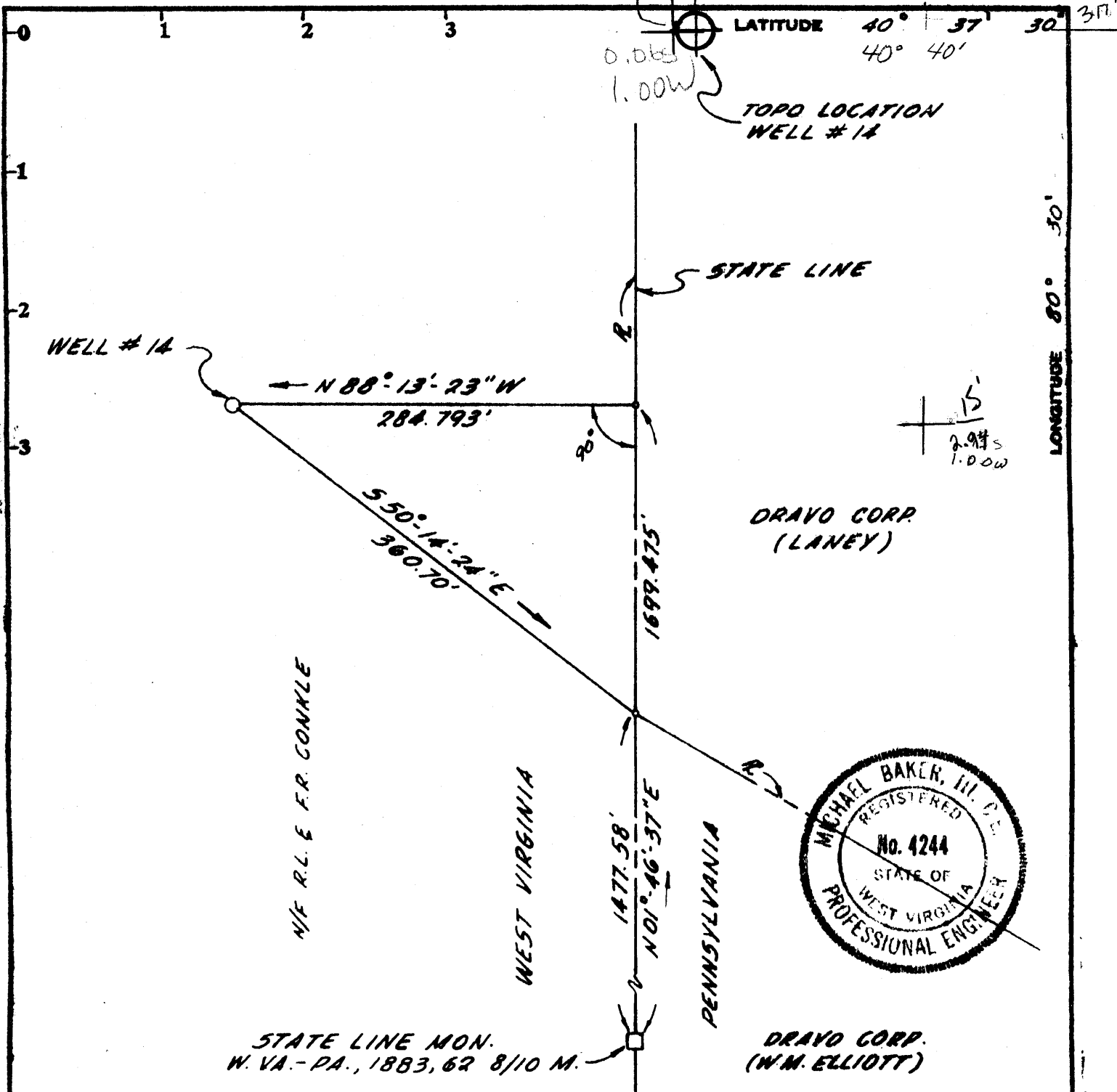


Correct 7.5  
1.065  
1.00W  
5280  
370



STATE LINE MON.  
W. VA. - PA., 1883, 62 8/10 M.

DRAVO CORP.  
(W.M. ELLIOTT)

Minimum Error of Closure 1:10,000  
 Source of Elevation U.S.G.S. BM. "TT 19BR 1952-1149"  
EL. 1149.303 (1929 SEA LEVEL DATUM)

I, the undersigned, hereby certify that this map is correct to the best of my knowledge and belief and shows all the information required by paragraph 6 of the rules and regulations of the oil and gas section of the mining laws of West Virginia.

- Fracture
- New Location
- Drill Deeper
- Abandonment

Signed: [Signature]  
 Squares: N S E W

Company DRAVO CORPORATION  
 Address NEVILLE IS. PGH., PA. 15225  
 Farm E. L. & F. R. CONKLE (Little Bluestem Development Area)  
 Tract \_\_\_\_\_ Acres 121.0 Lease No. \_\_\_\_\_  
 Well (Farm) No. 14 Serial No. EC  
 Elevation (Spirit Level) 976 1009.57 Wellsville 15'  
 Quadrangle E. LIVERPOOL NORTH 7 1/2'  
 County HANCOCK District GRANT  
 Engineer MICHAEL BAKER, III  
 Engineer's Registration No. W.VA. 4244  
 File No. \_\_\_\_\_ Drawing No. \_\_\_\_\_  
 Date FEB. 26, 1974 Scale 1" = 100'

STATE OF WEST VIRGINIA  
 DEPARTMENT OF MINES  
 OIL AND GAS DIVISION  
 CHARLESTON

**WELL LOCATION MAP**  
 FILE NO. Han-172-A

+ Denotes location of well on United States Topographic Maps, scale 1 to 62,500, latitude and longitude lines being represented by border lines as shown.  
 - Denotes one inch spaces on border line of original tracing.

47-029