

LATITUDE

39° 22' 30"



02° 20'

LONGITUDE

7'5 OGIS topo location

7.5' loc	<u>0.15 S</u>	15' loc	<u>0.035</u>
	<u>0.97 W</u>	(calc.)	<u>0.97 W</u>

Company Eagle Gas Co.

Farm A. J. Harbert

Quad Clarksburg +15' C

County Harrison

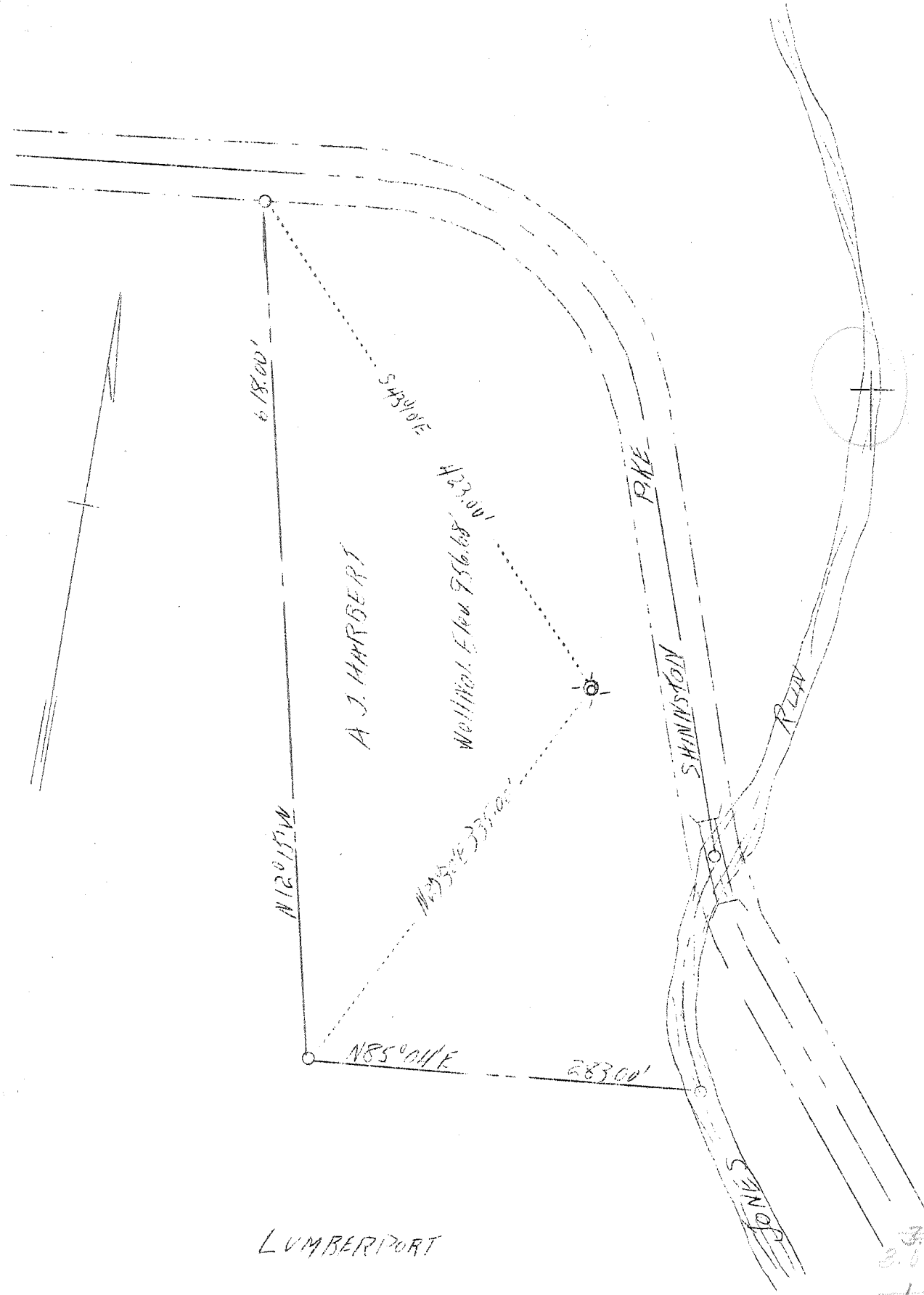
District Eagle

WELL LOCATION MAP

File No. 033-61

LATITUDE 39° 25'

LONGITUDE 80° 20'



LUMBERPORT

31
3.03.5
11 W
1.25-0

Company	Eagle Gas Co.
Address	Lumberport, W.Va.
Farm	A. J. Harbert
Tract	Acres 3.56 Lease No.
Well (Farm) No.	1 Serial No.
Elevation (Spirit Level)	956.68
Quadrangle	Clarksburg C
County	Harrison District Eagle
Engineer	Horner Bros. Engrs. (Paul Allen Horner)
Engineer's Registration No.	602
File No.	Drawing No.
Date	April 1938 Scale 1"-100'

STATE OF WEST VIRGINIA
 Department of Mines
 OIL AND GAS DIVISION
 CHARLESTON

WELL LOCATION MAP

File No. Har-61

Denotes location of well on United States Topographic Maps, scale 1 to 62,500, latitude and longitude lines being represented by border lines as shown.

Denotes one inch spaces on border line of original tracing.

6-6-1938

WEST VIRGINIA DEPARTMENT OF MINES

OIL & GAS DIVISION

W E L L R E C O R D

Permit No. Har-61

Gas Well

Clarksburg, Quad.

CASING & TUBING

Company	Eagle Gas Co.	6-5/8	987	987
Address	Lumberport, W. Va.	5-3/16	1001	1001
Farm	A. J. Harbert ACRES 3.56	3	3140	3140
Location	Jones Run			
Well No.	1 ELEV. 956.68	5-3/16"	1001'	cemented
District	Eagle - Harrison County	in June 1, 1938 by		
Surface	Fannie Swiger & Laura Robinson	Haliburton O.W.G. Co.		
	Lumberport, W. Va.			
Mineral	Eagle Gas Co., Lumberport, W. Va.			
Drilling commenced	Deeper 2/9/38			
Drilling completed	Deeper 7/25/38			
Volume	38,300 cubic feet			
Rock Pressure	Not taken			
Water	None			

Formation Color ^{Har} TOP Base Result Formation Color ^{Har} TOP Base Result

Before drilling	down depth was	2304							
Tiona	brown s	2853	2873	Show of gas	2853				
Speechly	" h	2952	2967	" "	2964				
Cherry Gr.	" s	3147	3178	No gas found					
Bradford	" h	3320	3340	" "	" "				
Total Depth			3463						

2304
 2350
 (2350)
 2300

WELL OPERATOR'S REPORT OF

[08-78]

DRILLING, FRACTURING AND/OR STIMULATING, OR PHYSICAL CHANGE

WELL TYPE: Oil / Gas / Liquid Injection / Waste Disposal /

(If "Gas", Production / Underground storage / Deep / Shallow /)

LOCATION: Elevation: 956.68 Watershed: Jones Run
 District: Eagle County: Harrison Quadrangle: Clarksburg, SE 1/4

WELL OPERATOR Eagle Gas Company
 Address 211 Main Street
Lumberport, W. Va. 26386

DESIGNATED AGENT Lorna Hill
 Address 211 Main Street
Lumberport, W. Va. 26386

PERMITTED WORK: Drill / Convert / Drill deeper / Redrill / Fracture or stimulate
 Plug off old formation / Perforate new formation /
 Other physical change in well (specify) _____

PERMIT ISSUED ON May 2, 19 38

OIL & GAS INSPECTOR FOR THIS WORK:

IF APPLICABLE: PLUGGING OF DRY HOLE ON CONTINUOUS PROGRESSION FROM DRILLING OR REWORKING. VERBAL PERMISSION OBTAINED

Name _____
 Address _____

LOGICAL TARGET FORMATION: Balltown Sand Depth 3.147 feet

Depth of completed well, 3463 feet Rotary / Cable Tools

Water strata depth: Fresh, N/A feet; salt, 695 feet.

Coal seam depths: Below Coal Is coal being mined in the area? Yes

Work was commenced February 9, 19 38, and completed July 28, 19 38

LOGGING AND TUBING PROGRAM

LOGGING OR LOGGING TYPE	SPECIFICATIONS				FOOTAGE INTERVALS		CEMENT FILL-UP OR SACKS (Cubic feet)	PACKERS
	Size	Grade	Weight per ft	New	Used	For drilling		
Conductor								Kinds
Fresh water	10					118	118	
Intermediate	7"					1255	227	Sizes
Production	5.5"					1001	1001	Depth set
Tubing								Perforations:
Packers								Top Bottom

OPEN FLOW DATA

Producing formation Balltown Sand Pay zone depth 3150 feet

Gas: Initial open flow, N/A Mcf/d Oil: Initial open flow, _____ Bbl/d

Final open flow, 37 Mcf/d Final open flow, _____ Bbl/d

Time of open flow between initial and final tests, _____ hours

Static rock pressure, N/A psig (surface measurement) after _____ hours shut in

[If applicable due to multiple completion--]

Second producing formation _____ Pay zone depth _____ feet

Gas: Initial open flow, _____ Mcf/d Oil: Initial open flow, _____ Bbl/d

Final open flow, _____ Mcf/d Final open flow, _____ Bbl/d

Time of open flow between initial and final tests, _____ hours

Static rock pressure, _____ psig (surface measurement) after _____ hours shut in

WELLS OF PERFORATED INTERVALS, FRACTURING OR STIMULATING, PHYSICAL CHANGE, ETC.

The following Sands were shot with Nitroglycerin.

- Big Injun 50 Quarts
- Fifth Sand 15 Quarts
- Tiona Sand 40 Quarts
- Speechley 40 Quarts
- Balltown 50 Quarts

LOG

FORMATION	Color	Hard or Soft	Top Feet	Bottom Feet	Remarks
					Including indication of all fresh and salt water, coal, oil and gas
low Coal					
ttle Dunkard			365	385	
g Dunkard			430	485	
s Sand			620	680	
lt Sand			700	950	Saltwater 695
ttle Lime			1200	1215	
ncil Cave			1215	1220	
g Lime			1220	1280	
g Injun			1280	1375	Gas 1298
uaw			1390	1410	
fty Foot			1860	1920	
irty Foot					
rdon Stray			2075	2095	
rdon			2100	2136	Gas
urth Sand			2175	2195	
fth Sand			2264	2270	Gas → orig 70 2304
eechley			2952	2967	Gas 2963
lltown			3147	3178	Gas 3150
D.				3463	

(Attach separate sheets to complete as necessary)

Eagle Gas Company

Well Operator

By

Its Chief Executive Officer

NOTE: Regulation 2.02(i) provides as follows:

"The term 'log' or 'well log' shall mean a systematic, detailed geological record of all formations, including coal, encountered in the drilling of a well."