

Latitude

39° 10'

80° 17' 30"

→ 0625
75' loc
kls 7/16/1995

0.625
1.91W

Longitude

Topo Location

7.5' Loc. _____ 15' Loc. 0.625
_____ (calc.) 4.14W

Company _____

Farm _____

15' Quad Winston SC
(sec.) _____

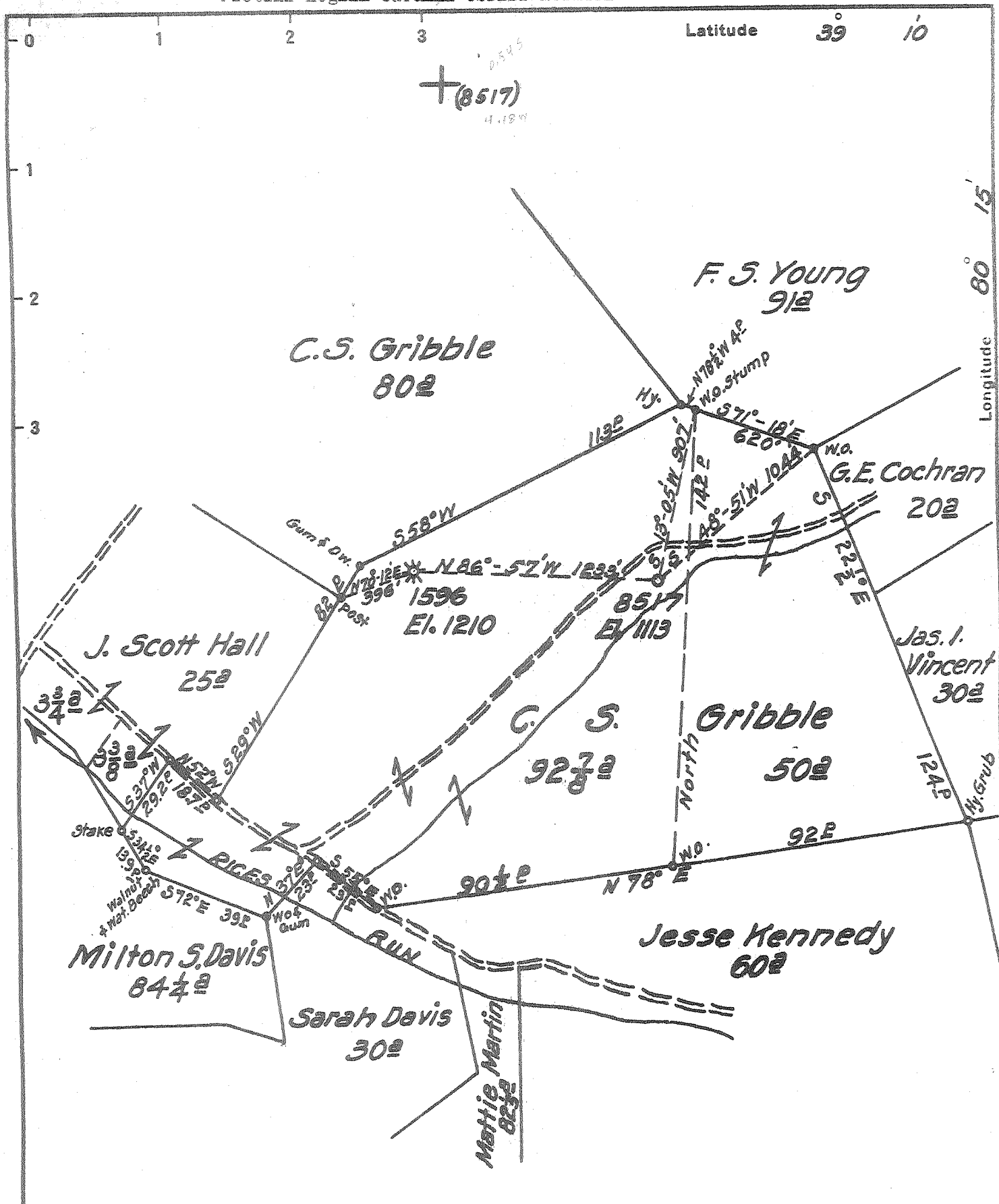
7.5' Quad Mount Clare

District _____

WELL LOCATION PLAT

County 033 Permit 79

DEEP WELL



New Location (8517)
 Drill Deeper
 Abandonment *lined 3/2/73*

F.B. 673P.3-4

Company CONSOL GAS SUPPLY CORP
~~Hope Natural Gas Co~~
 Address Clarksburg, W. Va.
 Farm C. S. Gribble
 Tract _____ Acres 142 3/4 Lease No. 8505
 Well (Farm) No. _____ Serial No. 1596-8517
 Elevation (Spirit Level) 1210-1113
 Quadrangle Weston EC
 County Harrison District Grant
 Engineer Wm Bowen
 Engineer's Registration No. 900
 File No. _____ Drawing No. _____
 Date June 18, 1940 Scale 1" = 40 Pp.

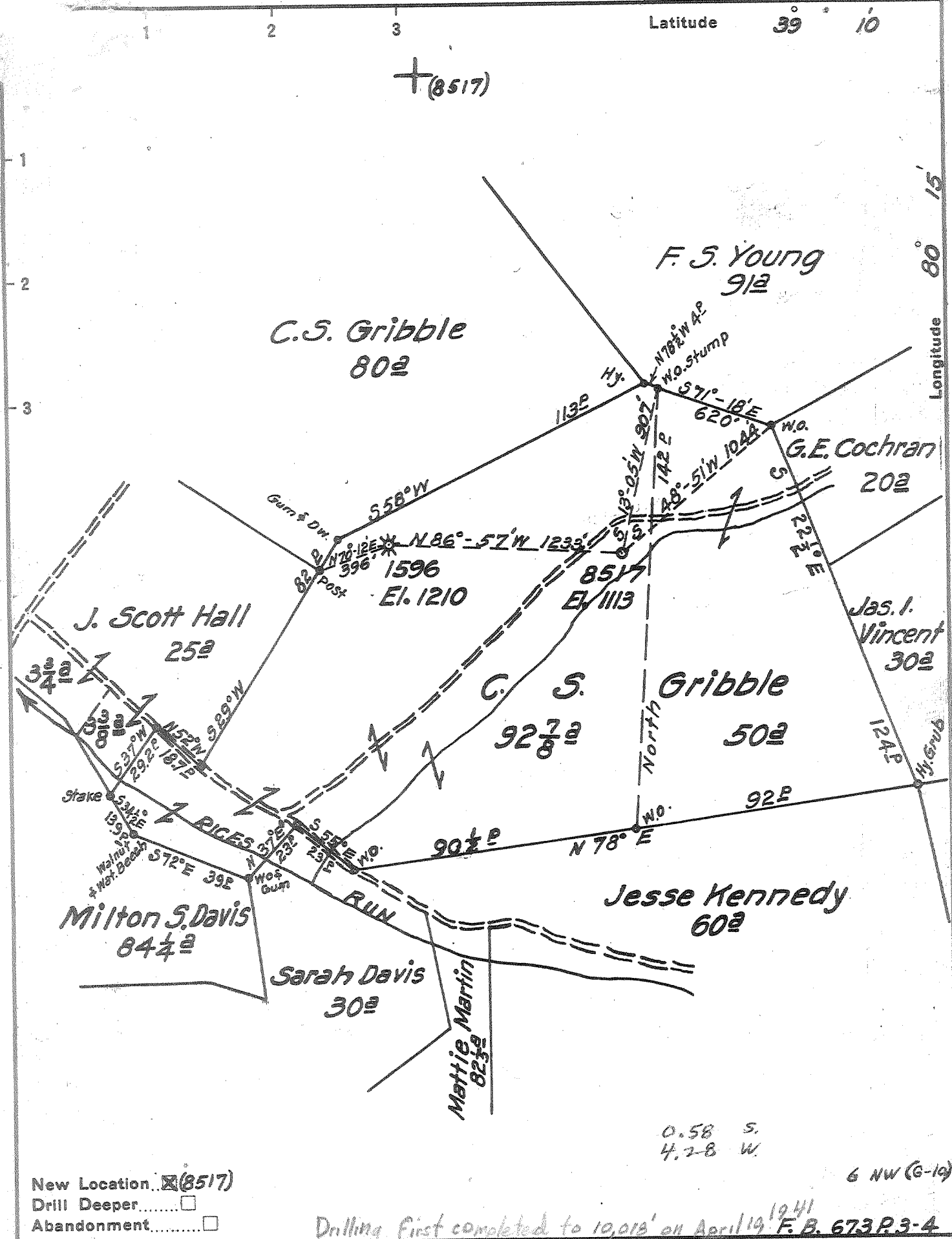
STATE OF WEST VIRGINIA
 DEPARTMENT OF MINES
 OIL AND GAS DIVISION
 CHARLESTON

WELL LOCATION MAP

FILE NO. HAR-79-P
Har-79-REA-P 12963

+ Denotes location of well on United States Topographic Maps, scale 1 to 62,500, latitude and longitude lines being represented by border lines as shown.

- Denotes one inch spaces on border line of original tracing.



New Location... (8517)
 Drill Deeper.....
 Abandonment.....

Company Hope Natural Gas Co.
 Address Clarksburg, W. Va.
 Farm C. S. Gribble
 Tract Acres 142 7/8 Lease No. 8505
 Well (Farm) No. _____ Serial No. 1596-8517
 Elevation (Spirit Level) 1210-1113 - *By Location*
 Quadrangle Weston - E.C.
 County Harrison District Grant
 Engineer Wm Bowers
 Engineer's Registration No. 900
 File No. _____ Drawing No. _____
 Date June 18, 1940 Scale 1" = 40' Po.

STATE OF WEST VIRGINIA
 DEPARTMENT OF MINES
 OIL AND GAS DIVISION
 CHARLESTON

WELL LOCATION MAP
 FILE NO. HAR-79-DRILL DEEPER
12-9-63

+ Denotes location of well on United States Topographic Maps, scale 1 to 62,500, latitude and longitude lines being represented by border lines as shown.

- Denotes one inch spaces on border line of original tracing.

3-0 153

Deep Well 1757

C. S. Gribble No. 8517 Well.

HAR-79

Grant District, Harrison County, W. Va.

Permit No. Har-79.

Elevation, 1113' L.

Dry hole.

Located 0.58 mi. S. of 39° 10' and 4.28 mi. W. of 80° 15'—EC—Weston
Quadrangle.

On eastern branch of Lost Creek.

1.4 mi. E. of Lost Creek.

	Top.	Bottom:	Thickness.	Elevation (top)
Big Lime -----	1155	1330	175	— 42
Big Injun Sand -----	1290?	-----	-----	— 177?
Berea Sand -----	1590	1618	28	— 477
Corniferous Lime -----	7055	7290	235	—5942
Oriskany Sand -----	7290	7400	110	• —6177
Newburg Sand -----	8633	8638	5	—7520
Keefer? Sand -----	9198	9207	9	—8085
Sand -----	9630	9685	55	—8517
Clinton Sand -----	9747	9996	249	—8634

Thickness, Devonian Shales, 5437 feet.

Total depth, 10,018'. 615

Remarks: Completed April 10, 1941.

Shot at 7290-7370'.

Show of gas, 1545-71' and 1797'. Show of gas in Oriskany.

Show of gas at 9650' and 9665-85'.

First rotary test in State.

Deepest well in West Virginia.

On 142 $\frac{1}{2}$ acres.

WEST VIRGINIA DEPARTMENT OF MINES
OIL & GAS DIVISION
WELL RECORD

Permit No. Har-79
Weston Quad.

Dry Hole

CASING & TUBING

Company Hope Natural Gas Co.
Address Clarksburg, W. Va.
Farm C. S. Gribble ACRES 142-7/8
Well No. 8517 ELEV. 1113
District Grant - Harrison County
Surface & Mineral
Commenced July 4, 1940
Completed April 10, 1941
Shot 4/30/41 - depth 7290-7370
Gas -
Oil -
Water None recorded

10	985	985
7	2203	2203

No coal

Sand, gray to brown	173	205		Shale, red, sandy	1888	1910
Shale, gray to green	205	330	Sandy	Sand, white, shaly	1910	1920
Shale, green	330	385		Shale, red&gn., Sandy	1920	1958
Sand, gray	385	430		Sandstone, fine, red	1958	1965 Shaly
Lime, brown	430	440		Shale, red, sandy	1965	2020
Sand, shaly (contaminated samples)	440	595		Sand, gr. to wh., Limey	2020	2035 Fourth
Sand, very fine, gray	595	660		Shale, gray & brown	2035	2082
Sand&Shale, gray	660	670		Sand, brown, FIFTH	2082	2113
Shale, gray to brown	670	705		Shale, grayish-green	2113	2545 Sandy
Sand, brown	705	715		Sandstone, gray	2545	2557
Shale, brown	715	740		Shale, gray	2557	2576
Sand, gray	740	770		Sand, gray, fine shaly	2576	2593
Shale, red&green Sandy	770	830		Shale, gray, sandy	2593	2691
Sand, brown; Maxon	830	840		Sandstone, lt. gray	2691	2708
Shale, brown to red	840	865		Shale, gr. to bn. Sandy	2708	2920
Sand, brown	865	870		Sandstone, wh. to gr.	2920	2927 Fine
Shale, red to green	870	985		Shale, gr. to bn. Sandy	2927	2960
Shale, gray, limey	985	1113		Sandstone, white, fine	2960	2965
Limestone, brown	1113	1123	L. Lime	Shale, gr. to brn.	2965	2984
Shale, sandy, gray	1123	1138	P. Cave	Sand, dark brown	2984	3015
Limestone, brown	1138	1150	Top B. Lime	Shale, gray, sandy	3015	3037
Shale, gray, limey	1150	1154		Sandstone, gr. fine	3037	3057
Limestone, gr to br.	1154	1203		Shale, gray, sandy	3057	3364
Shale, dk. bn, limey	1203	1209		Sandstone, dk. bn. fine	3364	3375
Limestone, bn. & gr.	1209	1238		Shale, gray, sandy	3375	3538
Sandstone, gr., limey	1238	1243		Sandstone, wh. to gr.	3538	3555 Limey
Limestone, white	1243	1264		Siltstone, reddish-bn.	3555	3596 Shaly
Sand, gray, fine	1264	1268		Sandstone, bn. to gr.	3596	3624
Shale, red to bk.	1268	1288		Siltstone, bn., shaly	3624	3653
Sandstone, wh. to gr.	1288	1330	B. Injun	Sandstone, gray, fine	3653	3658
Shale, dark brown	1330	1367		Shale, gray, sandy	3658	3703
Sandstone, wh to bn.	1367	1374	Limey	Sandstone, gray fine	3703	3718
Shale, brown	1374	1393		Shale, gray, sandy	3718	3730
Sandstone, fine, gray	1393	1415		Siltstone, brown	3730	3745
Shale, gray, sandy	1415	1545		Shale, gray, sandy	3745	3823
Sandstone, gr. & Wh.	1545	1571	Sh. Gas	Sand, fine, gr. to wh.	3823	3856
Shale, gray	1571	1586		Shale, dk. gr. sandy	3856	3895
Sandstone, gr. to bn.	1586	1618	Gantz	Sandstone, wh. to bn.	3895	3918
Shale, brown	1618	1638		Shale, brown, sandy	3918	3953
Sandstone, wh. to gr.	1638	1677	Sh. Gas	Sandstone, brown, fine	3953	3984
Shale, red to gray	1677	1684		Shale, gray, sandy	3984	4000
Sandstone, gr. to gn.	1684	1714	Shaly	Sand, white, fine	4000	4005
Shale, gray to green	1714	1728	Sandy	Shale, gray, sandy	4005	4028
Sand, gray, shaly	1728	1740		Sand, gr. & bn., fine	4028	4038
Sandstone, fine, shaly	1740	1750		Shale, gr. & brown	4038	4058
Shale, sandy, gray	1750	1768		Sandstone, brown	4058	4072 Benson
Sand, whit, 30 Ft.	1768	1780		Shale, brown, sandy	4072	4170
Shale, rd. & bn., Sandy	1780	1844	Sh. G 1797	Sand, brown	4170	4205
Sand, gray & white	1844	1860	Gordon Sty.	Shale, gray, sandy	4205	4215
Shale, green to red	1860	1870		Sand, wh. to gr. fine	4215	4243
Limestone, gray, sandy	1870	1873		Shale, gr. to brn.	4243	4346 Sandy
Sandstone, greenish-gray; limey	1873	1888	Gordon	Sand, gray, fine	4346	4362
				Shale, bluish-gr. to bk	4362	4520 Sandy
				Sand, gray, shaly	4520	4547

CONTINUED TO PAGE #2

Permit No. Mar-79

Company Hope Natural Gas Co.
 Farm C. S. Gribble
 Acres 142-7/8
 Well No. 8517
 Commenced 7/4/40
 Completed 4/10/41

Shale, brown, sandy	4547	4560	Sand, white, quartzitic	
Sand, shaly, gray	4560	4620	very hard, flinty	9751 9772
Shale, gr. to brn. Sandy	4620	5335	Shale, sandy, Siliceous	9772 9776
Shale, lt. gr. to buff	5335	5528	Sandy	
Shale, brown, sandy	5528	5865	Sand, white, quartzitic,	
Shale, brn., gr. & bk.	5865	6485	very hard, flinty	9776 9951
Shale, bk. to dk. gr.	6485	6621	Sandy	Shale, dk. gr., sandy 9951 9975
Limestone, brn., shaly	6621	6624	Sandy	Sandstone, white, fine 9975 9996
Shale, bk. to gr. sandy	6624	6776	Shale, siliceous,	reddish, brown 9996 10018
Limestone, shaly, brn.	6776	6800		
Shale, limey, sandy, gr.	6800	6843	Total Depth	10018
Shale, bn., sandy, gray	6843	6955		615
Shale, bk., sandy, soft	6955	7060		
Lime, cherty, gray;				
TOP HUNTERSVILLE CHERT	7060	7065		
Chert, limey, gr. & brn.	7065	7110		
Chert, bn. to lt. gr.	7110	7150		
Chert, brn. to bk.,				
broken, silty	7150	7240		
Chert, gr. to bn. limey	7240	7265		
Limestone, brn. cherty	7265	7290		
Sand, gray, limey;				
TOP ORISKANY	7290	7370	Sh. Gas	
Limestone, gr. sandy	7370	7433		
Shale, brn. to gr. sandy	7433	7437		
Sand, wh. to gr. shaly	7437	7455		
Limestone, bn. to gr.	7455	7539		
Chert, blue-gray, pure	7539	7541		
Limestone, brn. & gr.	7541	7613	Shaly	
Sand & Lime, wh. to gr.	7613	7619		
Limestone, gray, shaly	7619	7624		
Sandstone, wh. to gr.	7624	7648	Limey	
Lime, gray to brn.	7648	7825	dolomitic	
Dolomite, brown, limey,				
Anhydrite	7825	7865		
Lime, bn. to bk.	7865	7880	Dolomitic	
Chert, blue-gray	7880	7881		
Dolomite & Limestone				
with Anhydrite, Shaly	7881	7950		
Dolomite, Anhydrite	7950	8036	Shaly	
Salt	8036	8042		
Anhydrite, gray,	8042	8071	Dolomite	
Salt	8071	8138		
Dolomite, lime &				
Anhydrite, shaly,				
Cut mud @ 8212-8216				
Lost circulation				
at 8426 to 8431	8138	8633		
Sand, fine, gray, hard	8633	8638	Newburg ?	
Dolomite, Lime &				
Anhydrite, shaly	8638	9193	-low dip road	
Shale, red	9193	9198		
Sandstone, red, shaly	9198	9207	Broken	
Shale, red & green	9207	9636		
Sand, white, fine, shaly	9636	9685	Sh. Gas 9650 to 9665 to 9685	
Shale, gray, sandy	9685	9747		
Sand, gray, fine, flinty,				
white;				
TOP WHITE MEDINA	9747	9751	Tuscarora	

7370 7290 7060 9976
 1113 1113 1113 1113
 6257 6177 5947 8338

9996
 1113
 8883

9747
 1113
 8634

9996
 7060
 2936

Shale

Chert

Lime

Shale

Dolomite

Sand