

Minimum Error of Closure 1' IN 200'

Source of Elevation U.S.G.S. - TRIANGULATION STATION - BALD KNOB -  
 (ROSEMONT 7 1/2' TOPO MAP) ELEV. 1553'

"I, the undersigned, hereby certify that this map is correct to the best of my knowledge and belief and shows all the information required by paragraph 6 of the rules and regulations of the oil and gas section of the mining laws of West Virginia."

Re-Drill  Storage   
 New Location   
 Drill Deeper   
 Abandonment

July 6, 1967  
 SHEET 42 5-10, E-20 F.B. 1421 Pg. 35-37

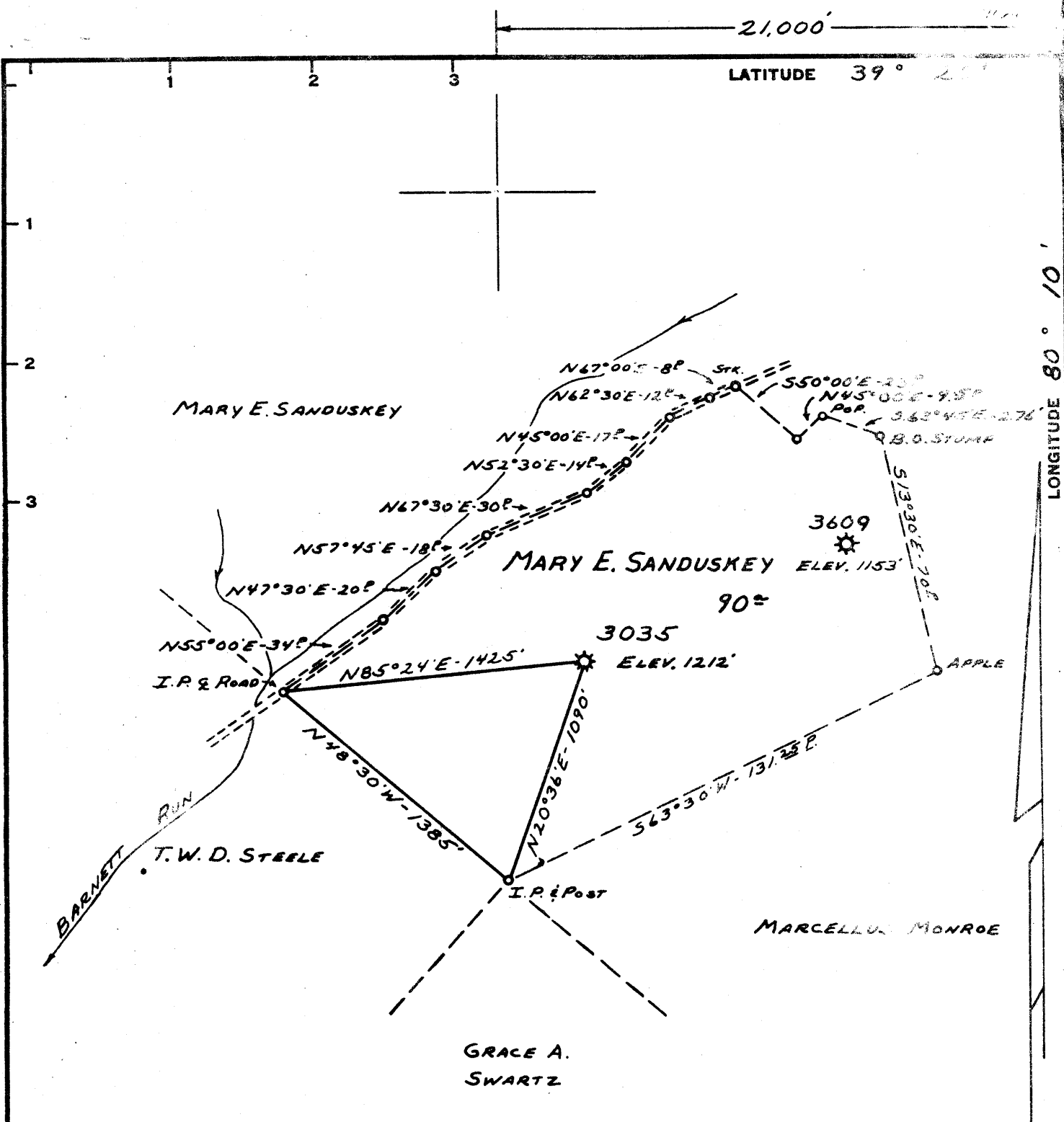
Company CONSOLIDATED GAS SUPPLY CORP.  
 Address CLARKSBURG, W.VA.  
 Farm MARY E. SANDUSKEY  
 Tract \_\_\_\_\_ Acres 90<sup>±</sup> Lease No. 8720  
 Well (Farm) No. \_\_\_\_\_ Serial No. 3035  
 Elevation (Spirit Level) 1212'  
 Quadrangle FAIRMONT (S.W.)  
 County HARRISON District SIMPSON  
 Engineer JACKSON M. JACOBS  
 Engineer's Registration No. 2397  
 File No. \_\_\_\_\_ Drawing No. \_\_\_\_\_  
 Date 2-16-67 Scale 1" = 40'

STATE OF WEST VIRGINIA  
 DEPARTMENT OF MINES  
 OIL AND GAS DIVISION  
 CHARLESTON

**WELL LOCATION MAP**  
 FILE NO. HAR-451-RED-P

+ Denotes location of well on United States Topographic Maps, scale 1 to 62,500, latitude and longitude lines being represented by border lines as shown.

- Denotes one inch spaces on border line of original tracing.



Minimum Error of Closure 1' IN 200'

Source of Elevation U.S.G.S. - TRIANGULATION STATION - BALD KNOB -  
 (ROSEMONT 7 1/2' TOPO MAP) ELEV. 1553'

"I, the undersigned, hereby certify that this map is correct to the best of my knowledge and belief and shows all the information required by paragraph 6 of the rules and regulations of the oil and gas section of the mining laws of West Virginia."

- RE-DRILL.....
- New Location.....
- Drill Deeper.....
- Abandonment.....

MAP SHEET 42 S-10, E-20 F.B. 1421 Pg. 35-37

Company CONSOLIDATED GAS SUPPLY CORP.

Address CLARKSBURG, W.VA.

Farm MARY E. SANDUSKEY

Tract \_\_\_\_\_ Acres 90<sup>±</sup> Lease No. 8720

Well (Farm) No. \_\_\_\_\_ Serial No. 3035

Elevation (Spirit Level) 1212'

Quadrangle FAIRMONT S.W.

County HARRISON District SIMPSON

Engineer Joshua M. Jarvis

Engineer's Registration No. 2397

File No. \_\_\_\_\_ Drawing No. \_\_\_\_\_

Date 2-16-67 Scale 1" = 40'

STATE OF WEST VIRGINIA  
 DEPARTMENT OF MINES  
 OIL AND GAS DIVISION  
 CHARLESTON

**WELL LOCATION MAP**  
 FILE NO. HAR-451-RED.

+ Denotes location of well on United States Topographic Maps, scale 1 to 62,500, latitude and longitude lines being represented by border lines as shown.

- Denotes one inch spaces on border line of original tracing.



STATE OF WEST VIRGINIA  
DEPARTMENT OF MINES  
OIL AND GAS DIVISION

Rotary   
Spudder   
Cable Tools   
Storage  Gas  
Oil or Gas Well. Storage  
(KIND)

Quadrangle FAIRMONT  
Permit No. HAR-151-RED

WELL RECORD

Company Consolidated Gas Supply Corporation  
Address Clarksburg, W. Va.  
Name Mary E. Sandusky Acres 20 A  
Location (waters)  
Well No. Elev.  
District Simpson County Harrison  
The surface of tract is owned in fee by  
Address  
Mineral rights are owned by  
Address  
Drilling commenced 6-27-67  
Drilling completed 7-1-67  
Date Shot Not shot From To  
With  
Open Flow /10ths Water in Inch  
/10ths Merc. in Inch  
Volume Redrilled for abandonment Cu. Ft.  
Block Pressure None lbs. hrs.  
None bbls., 1st 24 hrs.  
WELL ACIDIZED (DETAILS) No  
WELL FRACTURED (DETAILS) No

Casing and Tubing	Used in Drilling	Left in Well	Packers
Size			Kind of Packer
16			
13			
10	98	98	Size of
8 1/4			
6 3/4			Depth set
5 3/16			
4 1/2			
3			Perf. top
2			Perf. bottom
Liners Used			Perf. top
			Perf. bottom

Attach copy of cementing record.  
CASING CEMENTED SIZE No. Ft. Date  
Amount of cement used (bags) 10" cemented to surface  
Name of Service Co. Dowell, Inc.  
COAL WAS ENCOUNTERED AT None FEET INCHES  
FEET INCHES FEET INCHES  
FEET INCHES FEET INCHES

RESULT AFTER TREATMENT (Initial open Flow or bbls.)  
BLOCK PRESSURE AFTER TREATMENT HOURS  
Fresh Water Feet Salt Water Feet  
Producing Sand Fifty Foot (Storage Pool) Depth

Formation	Color	Hard or Soft	Top	Bottom	Oil, Gas or Water	Depth	Remarks
Below Coal							
Little Dunkard			350	370			
Big Dunkard			455	515			
Gas Sand			680	730			
Fast Salt Sand			750	805			
Hard Salt Sand			840	1000	Gas	940'	
Little Lime			1350	1362			
Pencil Cave			1362	1370			
Big Lime			1370	1425			
Big Injun			1425	1540			
Squaw			1565	1585			
<del>XXXXXXXXXX</del> Fifty Foot			1921	- -	Gas	1922'	
Total Depth				2170'			



Consolidated Gas Supply Corporation  
Clarksburg, W. Va.  
July 5, 1967

