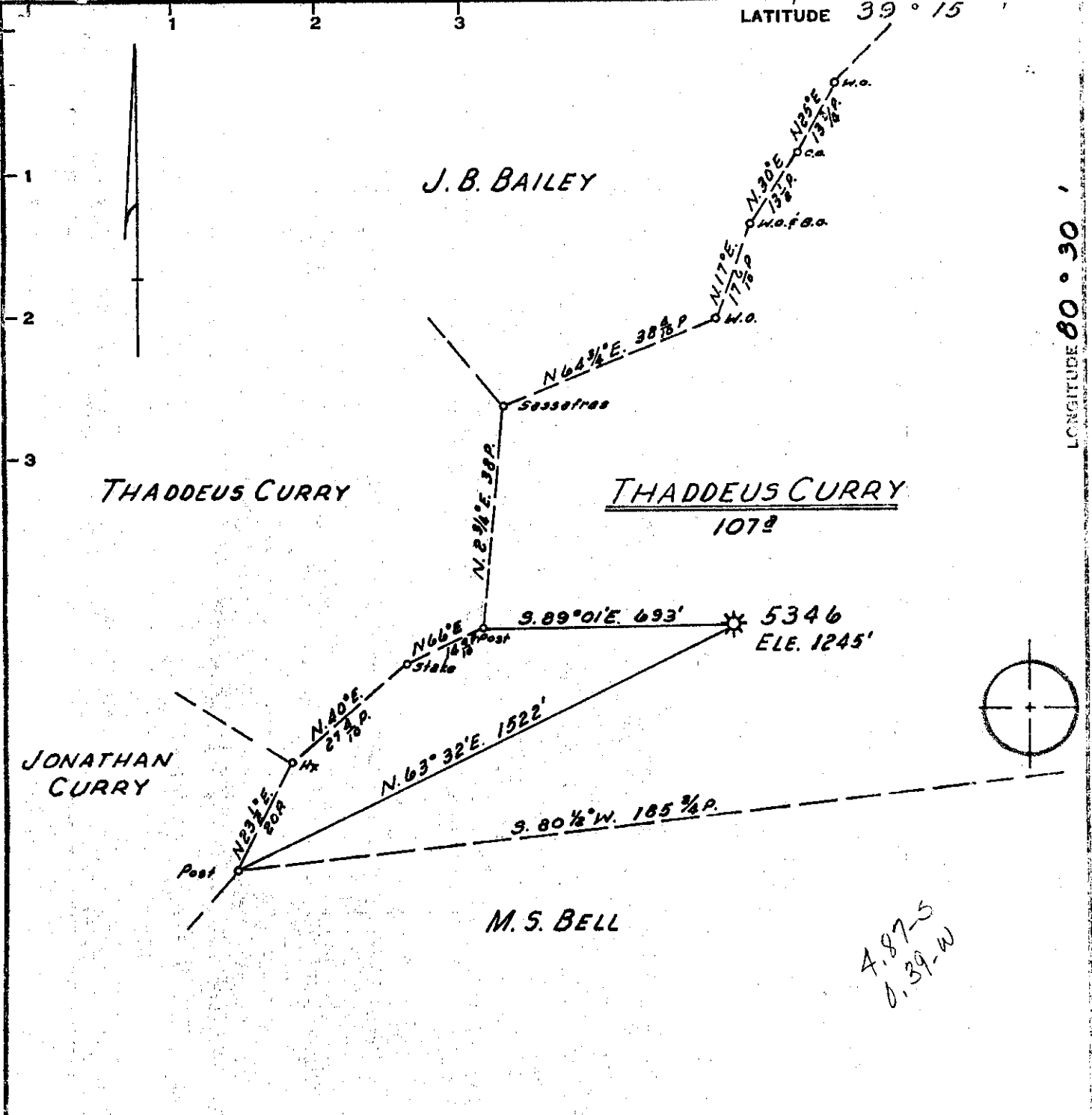


LATITUDE 39° 15'

LONGITUDE 80° 30'

25,500'



Minimum Error of Closure 1' IN 200'  
 Source of Elevation CONSOLIDATED GAS SUPPLY CORP.  
WELL # 5424 ELEVATION 1161'  
 "I, the undersigned, hereby certify that this map is correct to the best of my knowledge and belief and shows all the information required by paragraph 6 of the rules and regulations of the oil and gas section of the mining laws of West Virginia."

~~Fracture No. 5-25-69~~  
 New Location   
 Drill Deeper  *issued 8-4-69*

Abandonment   
 Partial Plugging 15646 5-22-69 MAP SH. 58, SQ. S19E6, F.B. 537 Pg. 31-33

Company CONSOLIDATED GAS SUPPLY CORP.  
 Address CLARKSBURG, WEST VA.  
 Farm THADDEUS CURRY  
 Tract \_\_\_\_\_ Acres 107 Lease No. 32112  
 Well (Farm) No. \_\_\_\_\_ Serial No. 5346  
 Elevation (Spirit Level) 1245'  
 Quadrangle VADIS (NE)  
 County HARRISON District UNION  
 Engineer Jackson M. Jarvis  
 Engineer's Registration No. 2397  
 File No. \_\_\_\_\_ Drawing No. \_\_\_\_\_  
 Date JAN. 6, 1969 Scale 1" = 400'

STATE OF WEST VIRGINIA  
 DEPARTMENT OF MINES  
 OIL AND GAS DIVISION  
 CHARLESTON

WELL LOCATION MAP  
 FILE NO. HAR-508-DD-P

+ Denotes location of well on United States Topographic Maps, scale 1 to 62,500, latitude and longitude lines being represented by border lines as shown.  
 - Denotes one inch spaces on border line of original tracing.



STATE OF WEST VIRGINIA  
DEPARTMENT OF MINES  
OIL AND GAS DIVISION

Rotary   
Spudder   
Cable Tools   
Storage

WELL RECORD

Oil or Gas Well Dry  
(KIND)

Quadrangle VADIS  
Permit No. HAR-508-DD

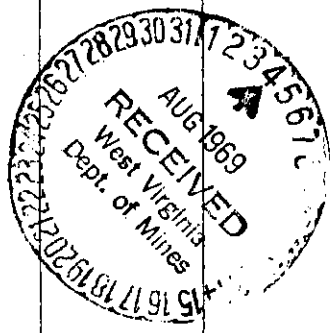
Company Consolidated Gas Supply Corporation  
Address 445 W. Main St., Clarksburg, W. Va.  
Farm Thaddeus Curry Acres 1.07  
Location (waters) \_\_\_\_\_  
Well No. 5346 Elev. 1245'  
District Union County Harrison  
The surface of tract is owned in fee by \_\_\_\_\_  
Address \_\_\_\_\_  
Mineral rights are owned by \_\_\_\_\_  
Address \_\_\_\_\_  
Drilling commenced April 15, 1969  
Drilling completed May 23, 1969  
Date Shot Not Shot From \_\_\_\_\_ To \_\_\_\_\_  
With \_\_\_\_\_  
Open Flow 1/10ths Water in \_\_\_\_\_ Inch  
1/10ths Merc. in \_\_\_\_\_ Inch  
Volume No additional gas encountered Cu. Ft.  
Rock Pressure 39# lbs. 72 hrs.  
Oil None bbls., 1st 24 hrs.  
WELL ACIDIZED (DETAILS) No  
WELL FRACTURED (DETAILS) 5-27-69

Casing and Tubing	Used in Drilling	Left in Well	Packers
Size			Kind of Packer
16			
13			
10	308	308	Size of
8 1/4	1294	1294	
6 3/8	1840	1840	Depth set
5 3/16			
4 1/2	2000	2000	
3			Perf. top
2			Perf. bottom
Liners Used			Perf. top
			Perf. bottom

Attach copy of cementing record. 4 1/2" with 150 bags  
CASING CEMENTED SIZE \_\_\_\_\_ No. Ft. \_\_\_\_\_ Date \_\_\_\_\_  
Amount of cement used (bags) 150 bags  
Name of Service Co. Halliburton  
COAL WAS ENCOUNTERED AT 335 FEET 96 INCHES  
\_\_\_\_\_ FEET \_\_\_\_\_ INCHES FEET \_\_\_\_\_ INCHES  
\_\_\_\_\_ FEET \_\_\_\_\_ INCHES FEET \_\_\_\_\_ INCHES

RESULT AFTER TREATMENT (Initial open Flow or bbls.) Dry hole  
ROCK PRESSURE AFTER TREATMENT --- HOURS ---  
Fresh Water --- Feet --- Salt Water --- Feet ---  
Producing Sand Dry--will abandon to surface Depth ---

Formation	Color	Hard or Soft	Top	Bottom	Oil, Gas or Water	Depth	Remarks
Started Drilling At				1904'			
Sand			1904'	2035'			
Lime & Slate			2035'	2235'			
Sand & Lime			2235'	2560'	No gas or water in deeper drilling		
Slate & Lime			2560'	4619'			
Benson Sand			4619'	4633'			
Total Depth				4702'			



Consolidated Gas Supply Corporation  
445 W. Main St., Clarksburg, W. Va.  
August 1, 1969



STATE OF WEST VIRGINIA  
DEPARTMENT OF MINES  
OIL AND GAS DIVISION

Rotary   
Spudder   
Cable Tools   
Storage

Quadrangle VADIS  
Permit No. HAR-508-DD

WELL RECORD

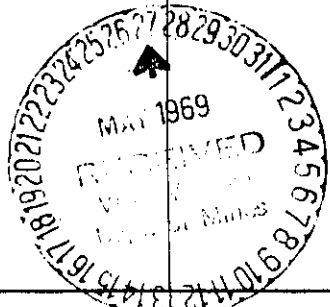
Oil or Gas Well Gas  
(KIND)

Company Consolidated Gas Supply Corporation  
Address Clarksburg, W. Va.  
Farm Thaddeus Curry Acres 107  
Location (waters)  
Well No. 5346 Elev. 1245'  
District Union, County Harrison  
The surface of tract is owned in fee by  
Address  
Mineral rights are owned by  
Address  
Drilling commenced 4-15-69  
Drilling completed 5-23-69  
Date Shot Not shot From To  
With  
Open Flow /10ths Water in Inch  
/10ths Merc. in Inch  
Volume No gas in deeper drilling Cu. Ft.  
Rock Pressure Not taken lbs. hrs.  
Oil None bbls., 1st 24 hrs.  
WELL ACIDIZED (DETAILS) No  
WELL FRACTURED (DETAILS) Will plug lower hole & frac Injun  
RESULT AFTER TREATMENT (Initial open Flow or bbls.)  
ROCK PRESSURE AFTER TREATMENT HOURS  
Fresh Water Feet Salt Water Feet  
Producing Sand Benson dry - will frac Injun Depth

Casing and Tubing	Used in Drilling	Left in Well	Packers
Size			Kind of Packer
16			
13			
10	308	308	Size of
8 1/4	129 1/2	129 1/2	
6 3/4	181 0	181 0	Depth set
5 3/16			
4 1/2	2000	2000	
3			Perf. top
2			Perf. bottom
Liners Used			Perf. top
			Perf. bottom

Attach copy of cementing record. 4 1/2" with 100 bags  
CASING CEMENTED SIZE No. Ft. Date  
Amount of cement used (bags)  
Name of Service Co. Halliburton  
COAL WAS ENCOUNTERED AT None FEET INCHES  
FEET INCHES FEET INCHES  
FEET INCHES FEET INCHES  
WELL FRACTURED (DETAILS) Will plug lower hole & frac Injun

Formation	Color	Hard or Soft	Top	Bottom	Oil, Gas or Water	Depth	Remarks
Started Drilling at				190 1/2			
and			190 1/2	2035			
Lime & Slate			2035	2235			
and Lime			2235	2560	No gas or water in deeper drilling		
Slate & Lime			2560	4619			
BENSON SAND			4619	4633			
Total Depth				4702'			
	Will plug lower hole & frac Injun			sand	PB 2000		
					Consolidated Gas Supply Corporation 145 West Main Street Clarksburg, W. Va.		



4702  
1904 DD  
2798 Sootage

JUN 02 1969