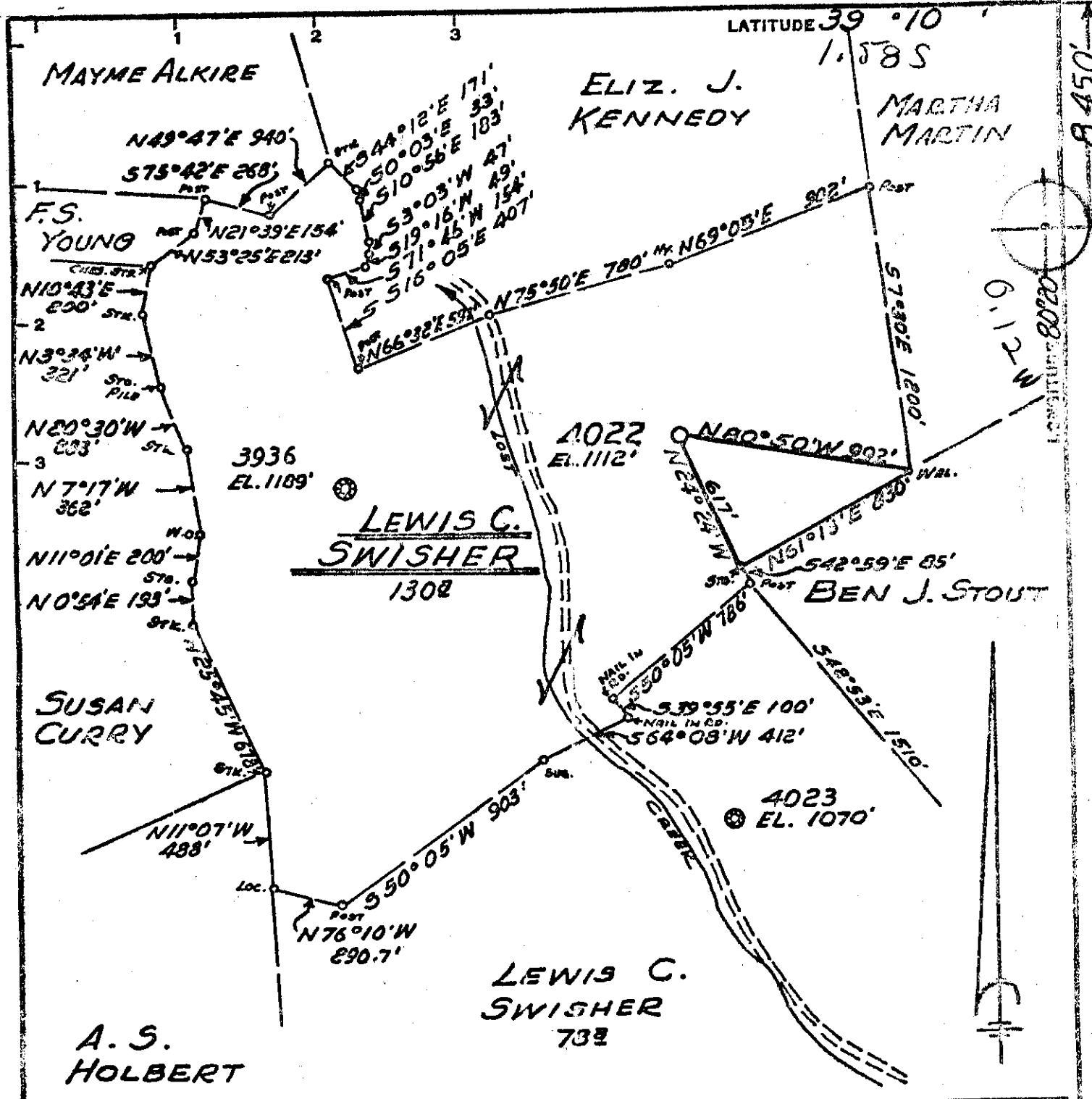


700'



Minimum Error of Closure 1' IN 200'
 Source of Elevation LEVELS FROM CONSOLIDATED GAS SUPPLY CORP. WELL 4023 - ELEV. 1070'
 "I, the undersigned, hereby certify that this map is correct to the best of my knowledge and belief and shows all the information required by paragraph 6 of the rules and regulations of the oil and gas section of the mining laws of West Virginia."

REDRILL
 New Location
 Drill Deeper
 Abandonment

MAP SHEET 56 522 E 15 FB. 1525 Pg. 31-32

Company CONSOLIDATED GAS SUPPLY CORP.
 Address CLARKSBURG, W. VA.
 Farm LEWIS C. SWISHER
 Tract _____ Acres 1308 Lease No. 78281
 Well (Farm) No. _____ Serial No. 4022
 Elevation (Spirit Level) 1112'
 Quadrangle WESTON
 County HARRISON District GRANT
 Engineer Jackson M. Jourd.
 Engineer's Registration No. 2397
 File No. _____ Drawing No. _____
 Date JUNE 4, 1969 Scale 1" = 600'

STATE OF WEST VIRGINIA
 DEPARTMENT OF MINES
 OIL AND GAS DIVISION
 CHARLESTON

WELL LOCATION MAP
 FILE NO. Has-523-Red

+ Denotes location of well on United States Topographic Maps, scale 1 to 62,500, latitude and longitude lines being represented by border lines as shown.

- Denotes one inch spaces on border line of original tracing.



STATE OF WEST VIRGINIA
DEPARTMENT OF MINES
OIL AND GAS WELLS DIVISION

Rotary
Spudder
Cable Tools
Storage

39° 15'

Quadrangle Weston 5-25

WELL RECORD

Oil or Gas Well Storage

Permit No. HAR-523-Red

Company Consolidated Gas Supply Corp.
Address Clarksburg, West Virginia
Farm Lewis S. Swisher Acrea 130
Location (waters)
Well No. 4022 Elev.
District Grant County Harrison
The surface of tract is owned in fee by
Address
Mineral rights are owned by
Address
Drilling commenced 6-31-69
Drilling completed 8-12-69
Date Shot Not Shot From To
With
Open Flow /10ths Water in Inch
/10ths Merc. in Inch
Volume 17,972 Cu. Ft. Cu. Ft.
Rock Pressure 56# lbs. 1 hrs.
Oil None bbls., 1st 24 hrs.
WELL ACIDIZED (DETAILS) No

Casing and Tubing	Used in Drilling	Left in Well	Remarks
Size			Kind of Packer
16			
13			Size of
10			Depth set
8 3/4	900	900	
6 3/4			
5 3/16			
4 1/2	1716	1716	Perf. top 1555
3			Perf. bottom 1559
2			Perf. top 1566
Liners Used			Perf. bottom 1574

WELL FRACTURED (DETAILS) No

Attach copy of cementing record.
CASING CEMENTED SIZE No. Ft. Date
Amount of cement used (bags) 4 1/2" with 500 bags
Name of Service Co. Halliburton
COAL WAS ENCOUNTERED AT None FEET INCHES
FEET INCHES FEET INCHES
FEET INCHES FEET INCHES

RESULT AFTER TREATMENT (Initial open Flow or bbls.) No

ROCK PRESSURE AFTER TREATMENT 14 days HOURS 75#

Fresh Water No record Feet Salt Water None Feet
Producing Sand Gantz Sand Storage - Observation Depth

Formation	Color	Hard or Soft	Top	Bottom	Oil, Gas or Water	Depth	Remarks
This record taken from Gamma Ray Log							
Little Lime			1136	1150			
Big Lime			1170	1269			
Big Injun			1269	1363			
Gantz			1553	1577	Gas	Gantz	
Total Depth				1723'			
Storage Observation Well							

RECEIVED
DEC 15 1969
OIL & GAS DIVISION
DEPT. OF MINES