

Minimum Error of Closure 1' IN 200'

Source of Elevation CONSOLIDATED GAS SUPPLY CORP WELL NO 10584  
ELEVATION 1097'

"I, the undersigned, hereby certify that this map is correct to the best of my knowledge and belief and shows all the information required by paragraph 6 of the rules and regulations of the oil and gas section of the mining laws of West Virginia."

New Location   
Drill Deeper   
Abandonment

*Partial Plugging issued 9-11-90*

MAP SHEET 56; 521-E14, F.B. 1569 P. 25-26 & 38

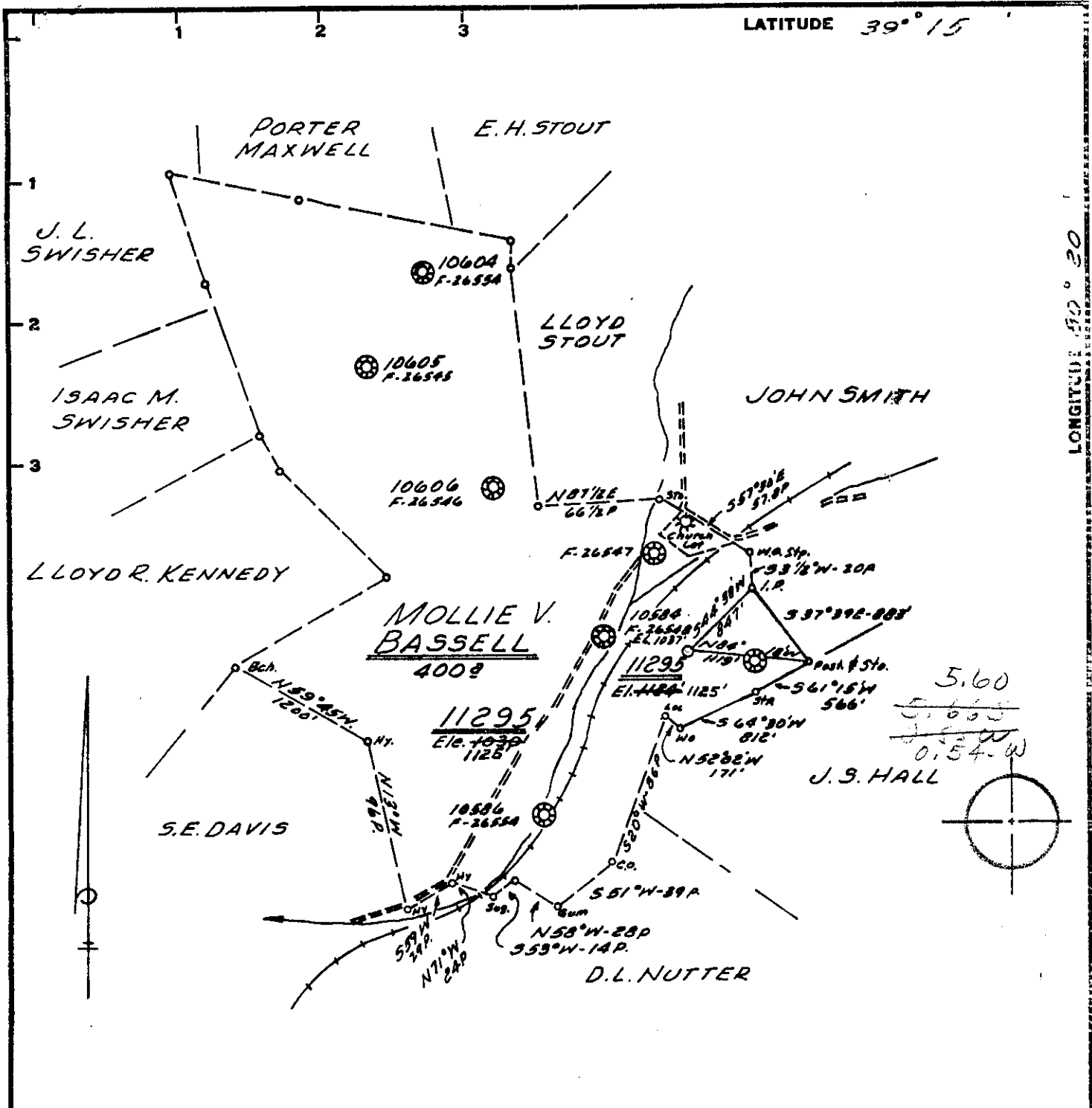
Company CONSOLIDATED GAS SUPPLY CORP.  
 Address CLARKSBURG, WEST VA.  
 Farm MOLLIE V. BASSELL  
 Tract \_\_\_\_\_ Acres 400 Lease No. 66783  
 Well (Farm) No. \_\_\_\_\_ Serial No. 11295  
 Elevation (Spirit Level) 1125'  
 Quadrangle WESTON NC  
 County HARRISON District GRANT  
 Engineer Joseph M. Jarvis  
 Engineer's Registration No. 2397  
 File No. \_\_\_\_\_ Drawing No. \_\_\_\_\_  
 Date JULY 17, 1970 Scale 1" = 1320'

STATE OF WEST VIRGINIA  
DEPARTMENT OF MINES  
OIL AND GAS DIVISION  
CHARLESTON

WELL LOCATION MAP  
FILE NO. HAR-548-PP

+ Denotes location of well on United States Topographic Maps, scale 1 to 62,500, latitude and longitude lines being represented by border lines as shown.

- Denotes one inch spaces on border line of original tracing.



Minimum Error of Closure 1' IN 200'  
 Source of Elevation CONSOLIDATED GAS SUPPLY CORP WELL NO. 10584  
ELEVATION 1097'  
 "I, the undersigned, hereby certify that this map is correct to the best of my knowledge and belief and shows all the information required by paragraph 6 of the rules and regulations of the oil and gas section of the mining laws of West Virginia."

New Location   
 Drill Deeper   
 Abandonment

MAP SHEET 56; 521-E14, F.B. 1569 P. 25-26 & 38

Company CONSOLIDATED GAS SUPPLY CORP.  
 Address CLARKSBURG, WEST VA.  
 Farm MOLLIE V. BASSELL  
 Tract \_\_\_\_\_ Acres 400 Lease No. 66783  
 Well (Farm) No. \_\_\_\_\_ Serial No. 11295  
 Elevation (Spirit Level) 1125'  
 Quadrangle WESTON NC  
 County HARRISON District GRANT  
 Engineer JOHN M. JARVIS  
 Engineer's Registration No. 2397  
 File No. \_\_\_\_\_ Drawing No. \_\_\_\_\_  
 Date JULY 17, 1970 Scale 1"=1320'

STATE OF WEST VIRGINIA  
 DEPARTMENT OF MINES  
 OIL AND GAS DIVISION  
 CHARLESTON

**WELL LOCATION MAP**  
 FILE NO. HAR-548

+ Denotes location of well on United States Topographic Maps, scale 1 to 62,500, latitude and longitude lines being represented by border lines as shown.  
 - Denotes one inch spaces on border line of original tracing.



SEP 11 1970

STATE OF WEST VIRGINIA  
DEPARTMENT OF MINES  
OIL AND GAS WELLS DIVISION

Rotary  XXXX  
Spudder   
Cable Tools   
Storage   
Oil or Gas Well  Dry  
(KIND)

Quadrangle WESTON  
Permit No. HAR-548

WELL RECORD

Company Consolidated Gas Supply Corporation  
Address Clarksburg, W. Va.  
Farm Mollie V. Bassell Acres 1.00  
Location (waters) \_\_\_\_\_  
Well No. 11295 Elev. 1125'  
District Grant, County Harrison  
The surface of tract is owned in fee by \_\_\_\_\_  
Address \_\_\_\_\_  
Mineral rights are owned by \_\_\_\_\_  
Address \_\_\_\_\_  
Drilling commenced 8-28-70  
Drilling completed 9-1-70  
Date Shot Not shot From \_\_\_\_\_ To \_\_\_\_\_  
With \_\_\_\_\_  
Open Flow /10ths Water in \_\_\_\_\_ Inch  
/10ths Merc. in \_\_\_\_\_ Inch  
Volume Not enough to test Cu. Ft.  
Rock Pressure None lbs. \_\_\_\_\_ hrs.  
Oil None bbls., 1st 24 hrs.  
WELL ACIDIZED (DETAILS) No  
WELL FRACTURED (DETAILS) No

Casing and Tubing	Used in Drilling	Left in Well	Packers
Size			Kind of Packer
<del>xxx</del> 20"	20	20	
13	400	400	
10			Size of
8 1/4	1899	1899	
6 5/8			Depth set
5 3/16			
4 1/2			
3			Perf. top
2			Perf. bottom
Liners Used			Perf. top
			Perf. bottom

Attach copy of cementing record.  
CASING CEMENTED \_\_\_\_\_ SIZE \_\_\_\_\_ No. Ft. \_\_\_\_\_ Date \_\_\_\_\_  
Amount of cement used (bags) All casing cemented to  
Name of Service Co. Halliburton Surface  
COAL WAS ENCOUNTERED AT None FEET \_\_\_\_\_ INCHES \_\_\_\_\_  
FEET \_\_\_\_\_ INCHES FEET \_\_\_\_\_ INCHES  
FEET \_\_\_\_\_ INCHES FEET \_\_\_\_\_ INCHES

RESULT AFTER TREATMENT (Initial open Flow or bbls.) \_\_\_\_\_  
ROCK PRESSURE AFTER TREATMENT \_\_\_\_\_ HOURS \_\_\_\_\_  
Fresh Water 17' 530' Feet \_\_\_\_\_ Salt Water None Feet \_\_\_\_\_  
Producing Sand Well dry in all formations (Benson Test) Depth \_\_\_\_\_

Formation	Color	Hard or Soft	Top	Bottom	Oil, Gas or Water	Depth	Remarks
Slate & Shells			0	675	Water	17'	1/2" stream Damp
1st Salt Sand			675	750	Water	530'	
2nd Salt Sand			790	860			
3rd Salt Sand			885	995			
Slate & Shells			995	1050			
Maxton Sand			1050	1105			
Lime & Shale			1105	1235			
Little Lime			1235	1255			
Lime & Shells			1255	1270			
Big Lime			1270	1365	Gas	1280	Show
BIG INJUN			1365	1450'			
Sand & Shale			1450	1665			
GANTZ			1665	1700			
Slate & Shells			1700	1770			
50' Sand			1770	1830			
Slate & Shale			1830	2000			
GORDON SAND			2000	2050			
Slate & Shale			2050	2203			
5th Sand			2203	2230			
Sand & Shale			2230	4200			
BENSON			4200	4225	Gas	Benson	Show
Total Depth				4350'			

Will abandon lower hole to 1790' and keep well for Storage Observation.

All measurements taken from KB 2' above GI.

4350  
2230