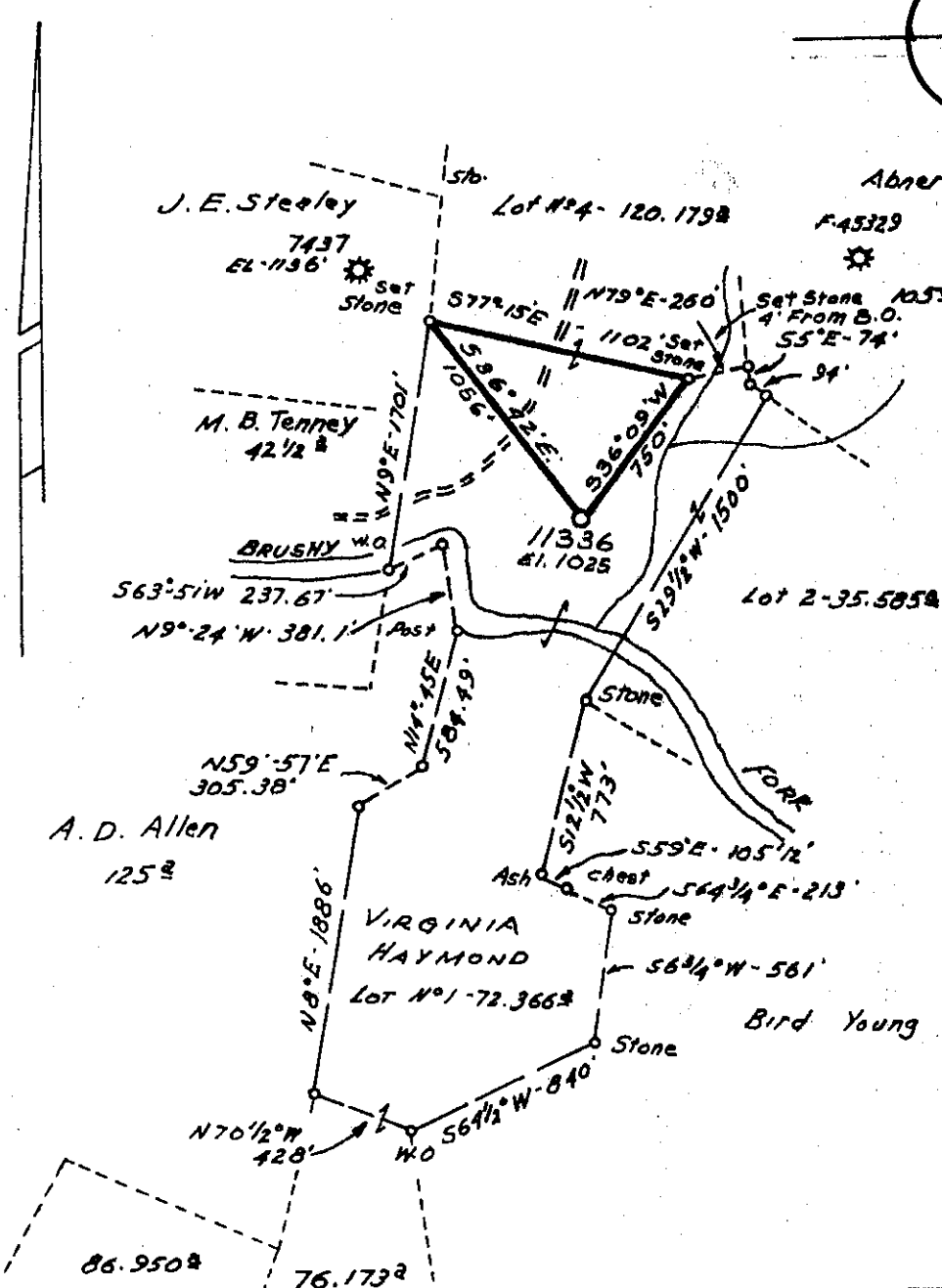


1.21-S
1.65-W



Minimum Error of Closure 1' IN 200'
 Source of Elevation ROAD FORMS - Jct. W.V.A. S.L.S. 42 E W.V.A. S.L.S. 23
MOUNT CLARE 1/2 TOPO MAP ELEVATION 1049'
 "I, the undersigned, hereby certify that this map is correct to the best of my knowledge and belief and shows all the information required by paragraph 6 of the rules and regulations of the oil and gas section of the mining laws of West Virginia."

- New Location
- Drill Deeper
- Abandonment

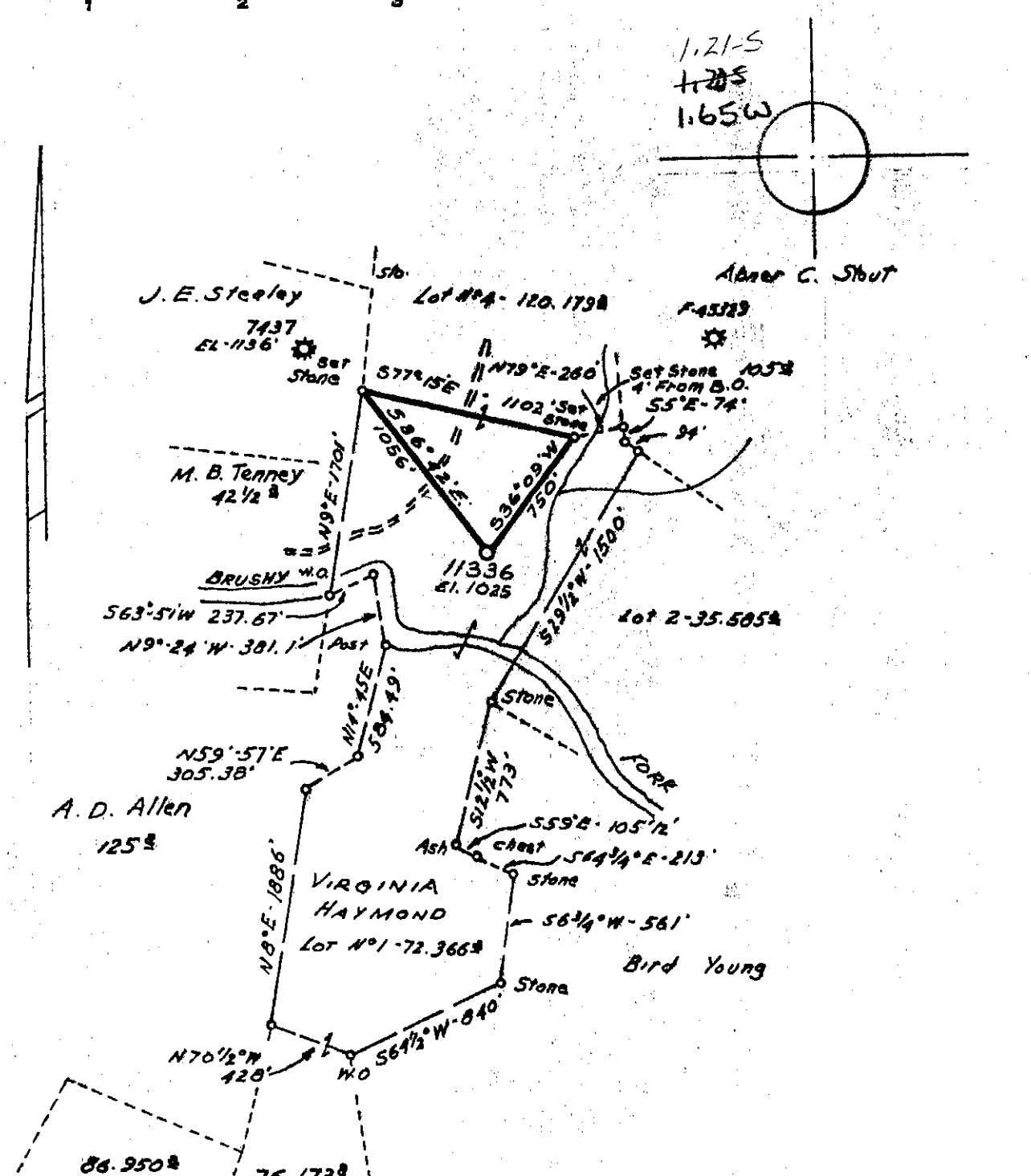
Partial Plug: ng-671/91 MAP SHEET 43 S-16, E-18 F.B. 1577 Pgs 39-40

Company CONSOLIDATED GAS SUPPLY CORP
 Address CLARKSBURG, W. VA.
 Farm VIRGINIA HAYMOND
 Tract _____ Acres 600 Lease No. 26583
 Well (Farm) No. _____ Serial No. 11336
 Elevation (Spirit Level) 1025'
 Quadrangle WESTON (N.E.)
 County HARRISON District ELK
 Engineer Jackson M. Jarvis
 Engineer's Registration No. 2397
 File No. _____ Drawing No. _____
 Date 4-22-71 Scale 1" = 800'

STATE OF WEST VIRGINIA
 DEPARTMENT OF MINES
 OIL AND GAS DIVISION
 CHARLESTON

WELL LOCATION MAP
 FILE NO. H81-571-PP

+ Denotes location of well on United States Topographic Maps, scale 1 to 62,500, latitude and longitude lines being represented by border lines as shown.
 — Denotes one inch spaces on border line of original tracing.



Minimum Error of Closure 1' IN 200'
 Source of Elevation ROAD FORKS - Jct. W.V.A.S.L.S. 42 E' W.V.A.S.L.S. 7
MOUNT CLARE 7 1/2' TOPO MAP ELEVATION 1049'
 "I, the undersigned, hereby certify that this map is correct to the best of my knowledge and belief and shows all the information required by paragraph 6 of the rules and regulations of the oil and gas section of the mining laws of West Virginia."

New Location
 Drill Deeper
 Abandonment

MAP SHEET 43 S-16, E-18 F.B. 1577 Pgs 39-40

Company CONSOLIDATED GAS SUPPLY CORP
 Address CLARKSBURG, W. VA.
 Farm VIRGINIA HAYMOND
 Tract _____ Acres 600 Lease No. 26583
 Well (Farm) No. _____ Serial No. 11336
 Elevation (Spirit Level) 1025'
 Quadrangle WESTON N.E.
 County HARRISON District ELK
 Engineer Jackson M. Jarvis
 Engineer's Registration No. 2397
 File No. _____ Drawing No. _____
 Date 4-22-71 Scale 1"=800'

STATE OF WEST VIRGINIA
 DEPARTMENT OF MINES
 OIL AND GAS DIVISION
 CHARLESTON

WELL LOCATION MAP
 FILE NO. Har-571

+ Denotes location of well on United States Topographic Maps, scale 1" = 62,500', latitude and longitude lines being represented by border lines as shown.
 — Denotes one inch spaces on border line of original tracing.



JUN 7 1971

STATE OF WEST VIRGINIA
DEPARTMENT OF MINES
OIL AND GAS WELLS DIVISION

Rotary
Spudder
Cable Tools
Storage

Quadrangle WESTON
Permit No. HAR-571

WELL RECORD

Oil or Gas Well **Gas**

Company	Consolidated Gas Supply Corporation		Casing and Tubing	Used in Drilling	Left in Well	Packers
Address	Clarksburg, W. Va.		Size			Kind of Packer
Farm	Virginia Haymond	Acres 600	16			
Location (waters)			13			Size of
Well No.	11336	Elev. 1025'	13	20	20	Depth set
District	Elk,	County Harrison,	8 3/4	651	651	Perf. top
The surface of tract is owned in fee by	Address		6 5/8			Perf. bottom
Mineral rights are owned by	Address		5 3/16	2293	2293	Perf. top
Drilling commenced	5-26-71		4 1/2			Perf. bottom
Drilling completed	6-3-71		3			
Date Shot	Not shot	From To	2			
With			Liners Used			
Open Flow	7/10ths Water in	Inch		Attach copy of cementing record. 13" & 8" to surface		
	7/10ths Merc. in	Inch		CASING CEMENTED	SIZE	No. Ft. Date
Volume	50 M in fifth	Cu. Ft.		Amount of cement used (bags) 1 1/2" with 240 bags		
Rock Pressure	Not taken	lbs. hrs.		Name of Service Co. Halliburton		
Oil	None	bbls., 1st 24 hrs.		COAL WAS ENCOUNTERED AT None FEET INCHES		
WELL ACIDIZED (DETAILS)	No			FEET	INCHES	FEET INCHES
WELL FRACTURED (DETAILS)	Will frac 5th sand			FEET	INCHES	FEET INCHES
RESULT AFTER TREATMENT (Initial open Flow or bbls.)						
ROCK PRESSURE AFTER TREATMENT				HOURS		
Fresh Water	None	Feet		Salt Water	None	Feet
Producing Sand	Benson dry	Will frac 5th sand		Depth	2293'	

Formation	Color	Hard or Soft	Top	Bottom	Oil, Gas or Water	Depth	Remarks
Sand & Shale			0	1070			
Lime			1070	1095			
Red Rock			1095	1110			
Big Lime			1110	1170			
Sandy Lime			1170	1250			
Slate & Shells			1250	2120			
5th Sand			2120	2145	Gas	5th sand	50 Mcf
Slate & Shells			2145	4213			
Benson			4213	4233	Gas	Benson	Show
Total Depth				4350'			

Supplemental Information - December 2, 1971 - Abandoned lower hole solid from 4350' to 2300' and ran 2309' of 4 1/2" casing. Perforated from 2130' to 2138' with 24 holes and fractured 5th sand 6-23-71 with 800 bbls water, 60,000# sand, 500 gal. acid and 2500 HHP. The final open flow was 117,900 cubic feet and the rock pressure was 520 pounds in 18 hours.

118 Mcf

Will abandon to 2293' & frac 5th sand

Consolidated Gas Supply Corporation
44 1/2 West Main Street
Clarksburg, W. Va.



RECEIVED
JUN 7 1971

STATE OF WEST VIRGINIA
DEPARTMENT OF MINES
OIL AND GAS WELLS DIVISION

OIL & GAS DIVISION
DEPT. OF MINES

Spudder
Cable Tools Dry
Storage
Oil or Gas Well Gas

Quadrangle WESTON
Permit No. HAR-571

WELL RECORD

Company Consolidated Gas Supply Corporation
Address Clarksburg, W. Va.
Farm Virginia Haymond Acres 600
Location (waters) _____
Well No. 11336 Elev. 1025'
District Elk County Harrison
The surface of tract is owned in fee by _____
Address _____
Mineral rights are owned by _____
Address _____
Drilling commenced 5-26-71
Drilling completed 6-3-71
Date Shot Not shot From _____ To _____
With _____
Open Flow 1/10ths Water in _____ Inch
1/10ths Merc. in _____ Inch
Volume 50 M in fifth Cu. Ft.
Rock Pressure Not taken lbs. _____ hrs.
Oil None bbls., 1st 24 hrs.
WELL ACIDIZED (DETAILS) No
WELL FRACTURED (DETAILS) Will frac 5th sand

Casing and Tubing	Used in Drilling	Left in Well	Packers
Size			Kind of Packer
16			
13			Size of
10 13"	20	20	Depth set
8 1/4	651	651	
6 5/8			Perf. top
5 3/16			Perf. bottom
4 1/2	2293	2293	Perf. top
3			Perf. bottom
2			
Liners Used			

Attach copy of cementing record. 13" & 8" to surface
CASING CEMENTED _____ SIZE _____ No. Ft. _____ Date _____
Amount of cement used (bags) 1 1/2" with 240 bags
Name of Service Co. Halliburton
COAL WAS ENCOUNTERED AT None FEET _____ INCHES
_____ FEET _____ INCHES FEET _____ INCHES
_____ FEET _____ INCHES FEET _____ INCHES

RESULT AFTER TREATMENT (Initial open Flow or bbls.) _____
ROCK PRESSURE AFTER TREATMENT _____ HOURS _____
Fresh Water None Feet _____ Salt Water None Feet _____
Producing Sand Benson dry Will frac 5th sand Depth 2293'

Formation	Color	Hard or Soft	Top	Bottom	Oil, Gas or Water	Depth	Remarks
Sand & Shale			0	1070			
Lime			1070	1095			
Red Rock			1095	1110			
Big Lime			1110	1170			
Sandy Lime			1170	1250			
Slate & Shells			1250	2120			
5th Sand			2120	2145	Gas	5th sand	50 M
Slate & Shells			2145	4213			
Benson			4213	4233	Gas	Benson	Show
Total Depth				4350'			
Will abandon to 2293' & frac 5th sand					Consolidated Gas Supply Corporation 445 West Main Street Clarksburg, W. Va.		