

LATITUDE

39° 15' 00"

80° 27' 30"

LONGITUDE

2.57 S
0.65 W

7.5 OGIS topo location

7.5' loc, _____

15' loc 2.57 S
(calc.) 2.88 W

Company Reserve Gas (8174)
 Farm Edith Somerville
 Elev. 1076' topo est.
 Quad West Melford/Weston NW
 County Harrison
 District Union

WELL LOCATION MAP

File No. 033-1602

8174

RESERVE GAS COMPANY

LOCATION FOR WELL No. ~~579~~

8174

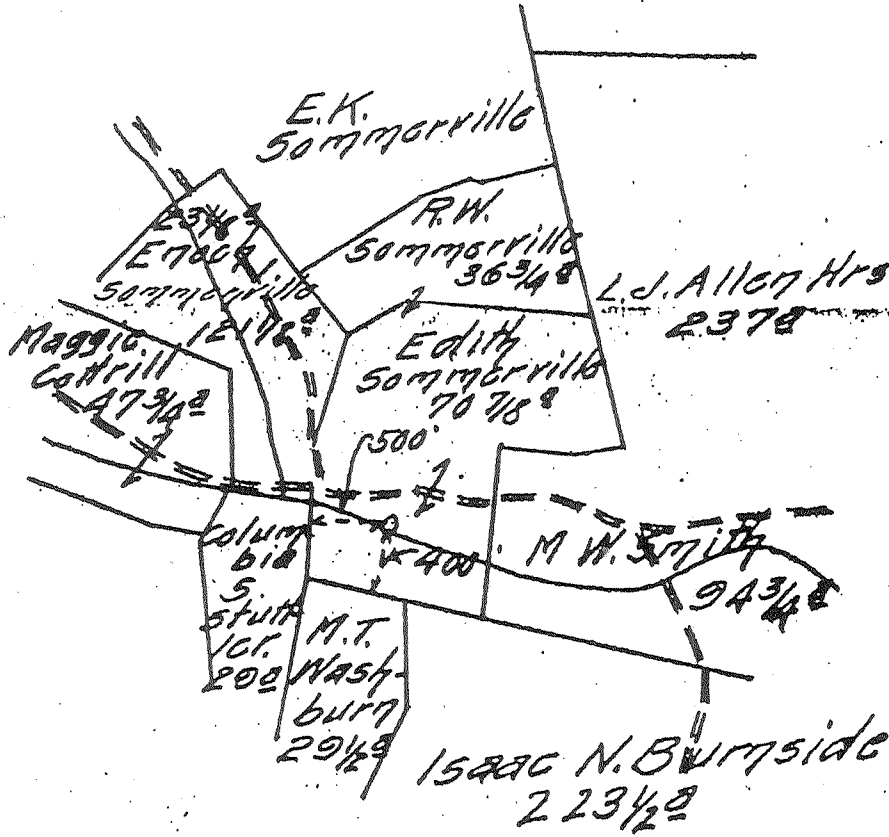
R. W. Somerville Farm, on waters of Big Buffalo Creek
District Harrison County, West Virginia.

Case No. 932 Acres 107 N. 17 S. 17 E. 8 W.
Scale, one inch equals 80 Paces Sent to Clarksburg Office Jan 16, 1915

Location to be 500 feet from Columbus Stuttler farm and 400 feet from M.T. Washburn farm.
1-16-15

6.12 miles

R. W. Somerville (landowner)
West Milford, W. Va.



API - 033 - 1602

TITLE RESERVE Three hundred feet around the dwelling house and barn

SPECIAL INSTRUCTIONS: COMPLETE WELL ON OR BEFORE June 8, 1915

Location made 1-20-15 by D. D. Long As per plat, except as noted. Do field work. 1-21-15 Returned to Pittsburgh 1-20-15

Location changed on account of _____
Authorized by _____ Date _____ Signed _____

Record of *Drilling* in *Harrison* District
 located on *Union* County *Harrison* State *W. Va.*

Location Made *1-20-1915* First Work Done *2-13-1915*
 Rig Commenced *2-8-1915* Rig Completed *4-22-1915*
 Drilling Commenced *3-15-1915* Drilling Contractor *W. B. Steel*
 Rig Contractor *Robert Sommerwell* M. H. S. Co. Tools, String No. *Pat. O'Grady*
 Drillers *Robert Sommerwell and Ray M. Graham*
 Tool Dressers *Robert Sommerwell and Ray M. Graham*

| FORMATION | TOP | BOTTOM | Steel Line Measurements | Water Found Depth | Oil Found Depth | Gas Found Depth | REMARKS |
|-----------------|-----------------------|-----------------------|-------------------------|-------------------|-----------------|-----------------|-------------------------------|
| Bituminous Coal | | | | | | | |
| Pittsburg Coal | <i>Below</i> | | | | | | |
| Blue Dunkard | <i>390</i> | <i>420</i> | <i>390</i> | | | | <i>16 ft Conductive</i> |
| Blue Dunkard | <i>480</i> | <i>510</i> | <i>480</i> | | | | |
| Sand | <i>650</i> | <i>690</i> | <i>650</i> | | | | |
| Red Salt | <i>800</i> | <i>850</i> | <i>800</i> | | | | |
| Cond Salt | <i>960</i> | <i>1040</i> | <i>960</i> | | | | |
| Carbon | <i>None</i> | | | | | | |
| Little Lime | <i>1429</i> | <i>1441</i> | <i>1429</i> | | | | |
| Green Cave | <i>1441</i> | <i>1446</i> | <i>1441</i> | | | | |
| Big Lime | <i>1446</i> | <i>1500</i> | <i>1446</i> | | | | |
| Big Injun | <i>1500</i> | <i>1610</i> | <i>1500</i> | | | | |
| Quartz | <i>None</i> | | | | | | |
| Green | <i>None</i> | | | | | | |
| Sand | <i>1852</i> | <i>1870</i> | <i>1852</i> | | | | |
| Fifty Foot | <i>1925</i> | <i>1975</i> | <i>1925</i> | | | | <i>220 MGS</i> |
| Thirty Foot | <i>2029</i> | <i>2040</i> | <i>2029</i> | | | <i>2030</i> | <i>3/10 Mer third 2" Open</i> |
| Gordon Stray | <i>2104</i> | <i>2136</i> | <i>2104</i> | | | | |
| Gordon | <i>2136</i> | <i>2175</i> | <i>2136</i> | | | <i>2140</i> | <i>3/10 Mer third 2" Open</i> |
| Fourth | | | | | | | <i>880 MGS</i> |
| Fifth | | | | | | | |
| Bayard | | | | | | | |
| Total Depth | | | <i>2220</i> | | | | |

| SIZE | Charged to Well | | Put in Well | | Pulled Out | | Left in Well | | Transferred Before Completing | | Left of Well Not in Use | | If more than two strings of casing are left below, give reasons for leaving additional strings |
|-------------|-----------------|----------|-------------|----------|------------|----------|--------------|----------|-------------------------------|-----|-------------------------|----------|--|
| | Foot | In. | Foot | In. | Foot | In. | Foot | In. | Foot | In. | Foot | In. | |
| 13" Csg. | | | | | | | | | | | | | |
| 10" " | <i>268</i> | <i>-</i> | <i>153</i> | <i>-</i> | <i>153</i> | <i>-</i> | | | | | <i>268</i> | <i>-</i> | |
| 8 1/2" " | <i>1132</i> | <i>6</i> | <i>956</i> | <i>-</i> | <i>956</i> | <i>-</i> | | | | | <i>1132</i> | <i>6</i> | |
| 6 5/8" " | <i>1619</i> | <i>5</i> | <i>1524</i> | <i>-</i> | | <i>-</i> | <i>1524</i> | <i>-</i> | | | <i>95</i> | <i>5</i> | |
| 5 3/8-16" " | <i>2235</i> | <i>7</i> | <i>2179</i> | <i>7</i> | | | <i>2179</i> | <i>7</i> | | | <i>55</i> | <i>6</i> | |
| 2 Tbg. | <i>2457</i> | <i>8</i> | <i>2238</i> | <i>4</i> | | | <i>2238</i> | <i>4</i> | | | <i>219</i> | <i>4</i> | |

| SIZE | KIND | Amount Anchor | Amount Above Anchor | REMARKS |
|-----------------------|--------------------|---------------|---------------------|-----------------------------|
| <i>8 1/2 x 16 5/8</i> | <i>Bottom Hole</i> | | <i>1524</i> | <i>First packer set OK</i> |
| <i>6 5/8 x 15 3/8</i> | <i>" "</i> | | <i>2179</i> | <i>Second packer set OK</i> |
| <i>5 3/8 x 16</i> | <i>Anchor</i> | <i>90</i> | <i>2147</i> | <i>Third packer set OK</i> |

| SHOOTING RECORD (If shot before or upon completion of well) | | | | | | | | | | | | | | |
|---|--------|--------------|-----------------|----------|------|------------------|--------|---------|-----------------|--------|---------|---------------------------------|--------------|--|
| DATE | Quarts | Top of Shell | Bottom of Shell | Diameter | Sand | Test Before Shot | | | Test After Shot | | | Test Taken After Shot No. Hours | By Whom Shot | |
| | | | | | | Reading | Liquid | Opening | Reading | Liquid | Opening | | | |
| | | | | | | | | | | | | | | |

CEMENTING RECORD

Date Cemented..... Size Hole Cemented..... Size Casing Cemented.....
 Top Pittsburg Coal..... Top Cementing..... Amount Cement Used.....
 Bottom Pittsburg Coal..... Bottom Cementing..... Amount Sand Used.....
 Mr..... Coal Company on ground when coal was cemented.....
 Signature of persons who cemented well.....

MAY 15 1915 U.S.
 ENTERED
 WELL BOOK AUG 31 1915 G.A.K.
 LEASE DOCKET
 J.C.L.
 MAY 17 1915 U.S.
 LOCATION BOOK
 G.O.P.L.T.

Approved by *Chas. C. ...* Foreman
 API - 033-11002