

LATITUDE  $39^{\circ}27'30''$

$80^{\circ}30'00''$

LONGITUDE

7.5 OGIS topo location.

7.5' loc.	<u>0.275</u>	15' loc	<u>3.155</u>
	<u>0.30W</u>	(calc.)	<u>0.30W</u>

Company Pennzoil 4

Farm Harriet Talkington

Centerpoint (NE) 15'

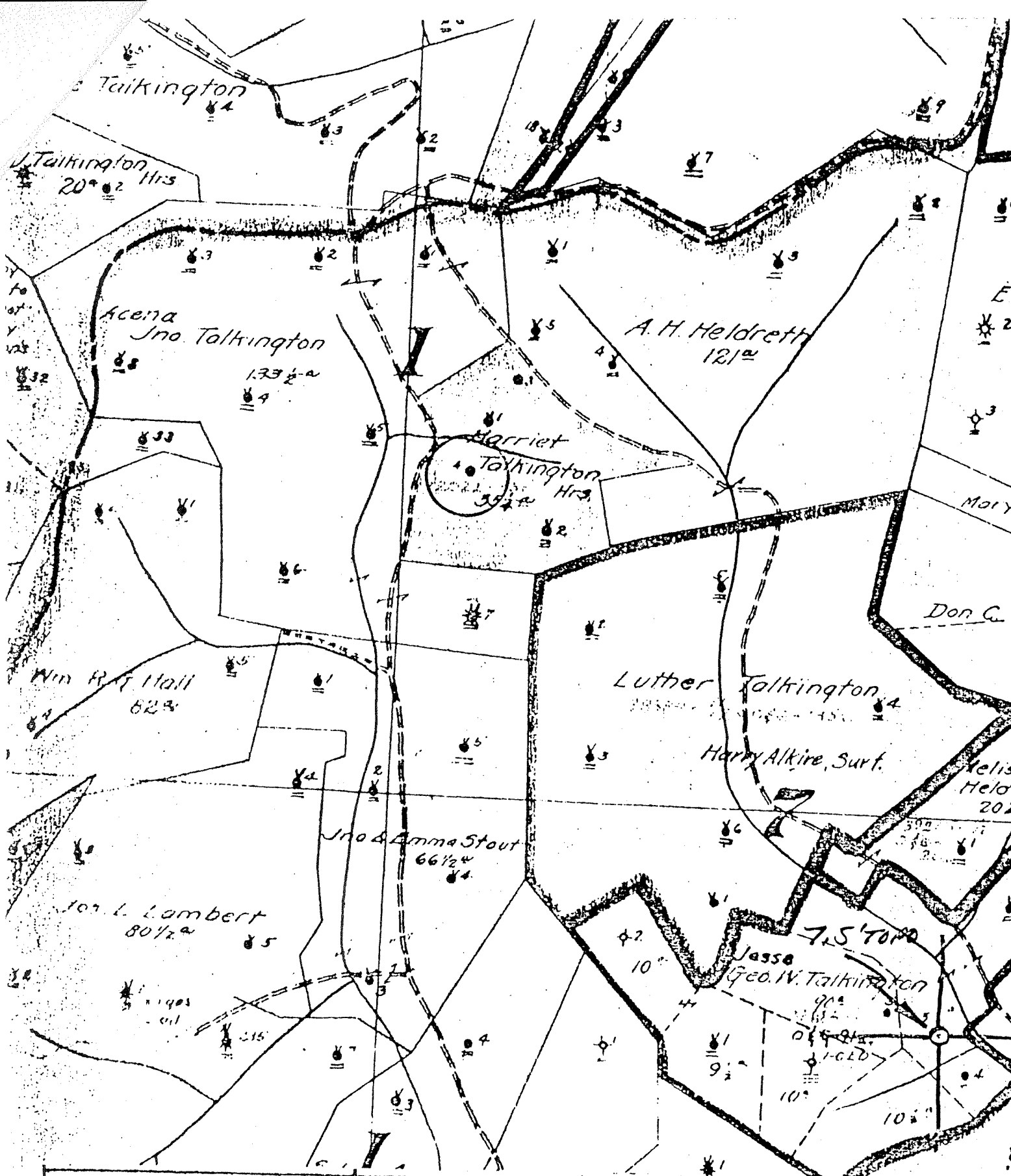
Quad Folsom 7.5'

County Harrison

District Sards

WELL LOCATION MAP

File No. 033-1847



(+) DENOTES LOCATION OF WELL ON UNITED STATES TOPOGRAPHIC MAPS

FORM IV-6  
(8-79)

**NA9NI E7**



STATE OF WEST VIRGINIA  
DEPARTMENT OF MINES  
OIL AND GAS DIVISION

DATE 1-9- 1979  
OPERATOR'S WELL NO 4  
API WELL NO.  
47-033-1847  
STATE COUNTY PERMIT

WELL TYPE: OIL  GAS  LIQUID INJECTION  WASTE DISPOSAL   
(IF "GAS", PRODUCTION  STORAGE  DEEP  SHALLOW   
LOCATION: ELEVATION \_\_\_\_\_ WATER SHED MIDDLE RUN  
DISTRICT SARDIS COUNTY HARRISON  
QUADRANGLE FOLSOM 7.51

SURFACE OWNER \_\_\_\_\_ ACREAGE \_\_\_\_\_  
OIL & GAS ROYALTY OWNER \_\_\_\_\_ LEASE NO. \_\_\_\_\_ LEASE ACREAGE \_\_\_\_\_

PROPOSED WORK: DRILL  CONVERT  DRILL DEEPER  REDRILL  FRACTURE OR STIMULATE  PLUS OFF OLD FORMATION  PERFORATE NEW FORMATION  OTHER PHYSICAL CHANGE IN WELL (SPECIFY) \_\_\_\_\_

PLUS AND ABANDON  CLEAN OUT AND REPLUG   
TARGET FORMATION \_\_\_\_\_ ESTIMATED DEPTH \_\_\_\_\_  
WELL OPERATOR Pennzoil Company DESIGNATED AGENT James A. Crews  
ADDRESS P. O. Box 1588 ADDRESS P. O. Box 1588  
Parkersburg, WV 26101 Parkersburg, WV 26101

**HARRIETT TALKINGTON - 4**

Well No. *84* *Jarvis* *Washington* Farm Acres  
 Lease No. *Jardis* District *Harrison* County *Mo.* State  
 Brought from *Contractor* *W. J. Co.* Contractor  
 Drilling Commenced *191* Drilling Completed *Feb. 7, 1917*  
 N. *1* S. E. *6 E 7* W.

ROCK FORMATION	TOP	BOTTOM	STEEL LINE MEASUREMENT	REMARKS
<i>Light Sand</i>	<i>1115</i>	<i>1123</i>		
<i>Big Sand</i>	<i>1600</i>	<i>1627</i>		
<i>Maxon Sand</i>	<i>2230</i>	<i>2265</i>		
<i>Little Sand</i>	<i>2300</i>	<i>2316</i>		
<i>Thin Sand</i>	<i>2316</i>	<i>2320</i>		
<i>Big Sand</i>	<i>2320</i>	<i>2385</i>		
<i>Thin Sand</i>	<i>2385</i>	<i>2485</i>		
<i>Thin Sand</i>	<i>2470</i>	<i>2990</i>		
<i>Thin Sand</i>	<i>3054</i>	<i>3092</i>		
<i>Thin Sand</i>	<i>3155</i>	<i>3182</i>		
<i>Thin Sand</i>	<i>3190</i>	<i>3213</i>		
<i>Thin Sand in Jordan</i>	<i>3194</i>	<i>3202</i>		
<i>Skilled to</i>		<i>3244</i>		
<i>Nothing found below Jordan</i>				
<i>hole filled up to</i>		<i>3217</i>		

CASING RECORD AS TALLIED. NOT STEEL LINE MEASUREMENT

SIZE	PUT IN WELL		PULLED OUT		LEFT IN WELL		Shot Date	Amount	Sand	Result	Packer Size	Depth Set
	FEET	IN.	FEET	IN.	FEET	IN.						
<i>10"</i>	<i>2</i>						<i>Feb. 8, 1917</i>	<i>20 St.</i>	<i>Jordan. Top of shot</i>	<i>3194. Second shot</i>		
<i>8 1/4"</i>			<i>Skilled</i>				<i>Apr. 18, 1917 - 60 St.</i>					
<i>6"</i>	<i>2480</i>											
<i>5"</i>	<i>2973</i>											
<i>4" Linner</i>	<i>12</i>											
<i>Top of Linner</i>	<i>2965'</i>											

Production First 24 Hours ..... Bbls. Gas Test .....

Approved by *E. E. Reder* Superintendent

033-1847

47-033-1847