

Latitude

39 25

Longitude

30 22 30.2

+ 7.5 est. loc

Topo Location

7.5' Loc. _____ 15' Loc. _____
(calc.) _____

Company Eagle Gas

Farm Lafayette Swiger #24

15' Quad Clarksburg
(sec.)

7.5' Quad Wallace

District Eagle

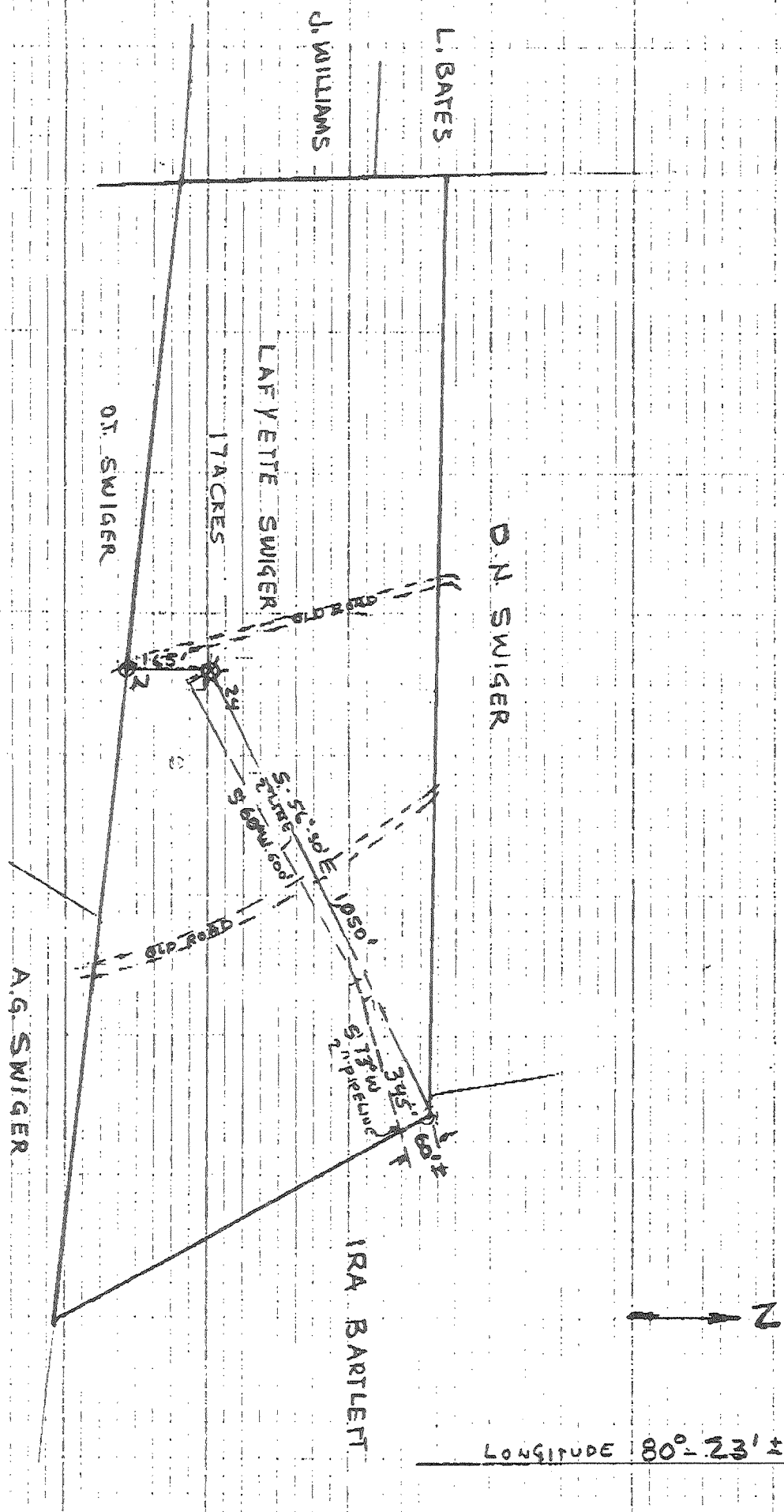
WELL LOCATION PLAT

County 033 Permit 2294

33-2294

LATITUDE 39° - 23' ±

LONGITUDE 80° - 23' ±



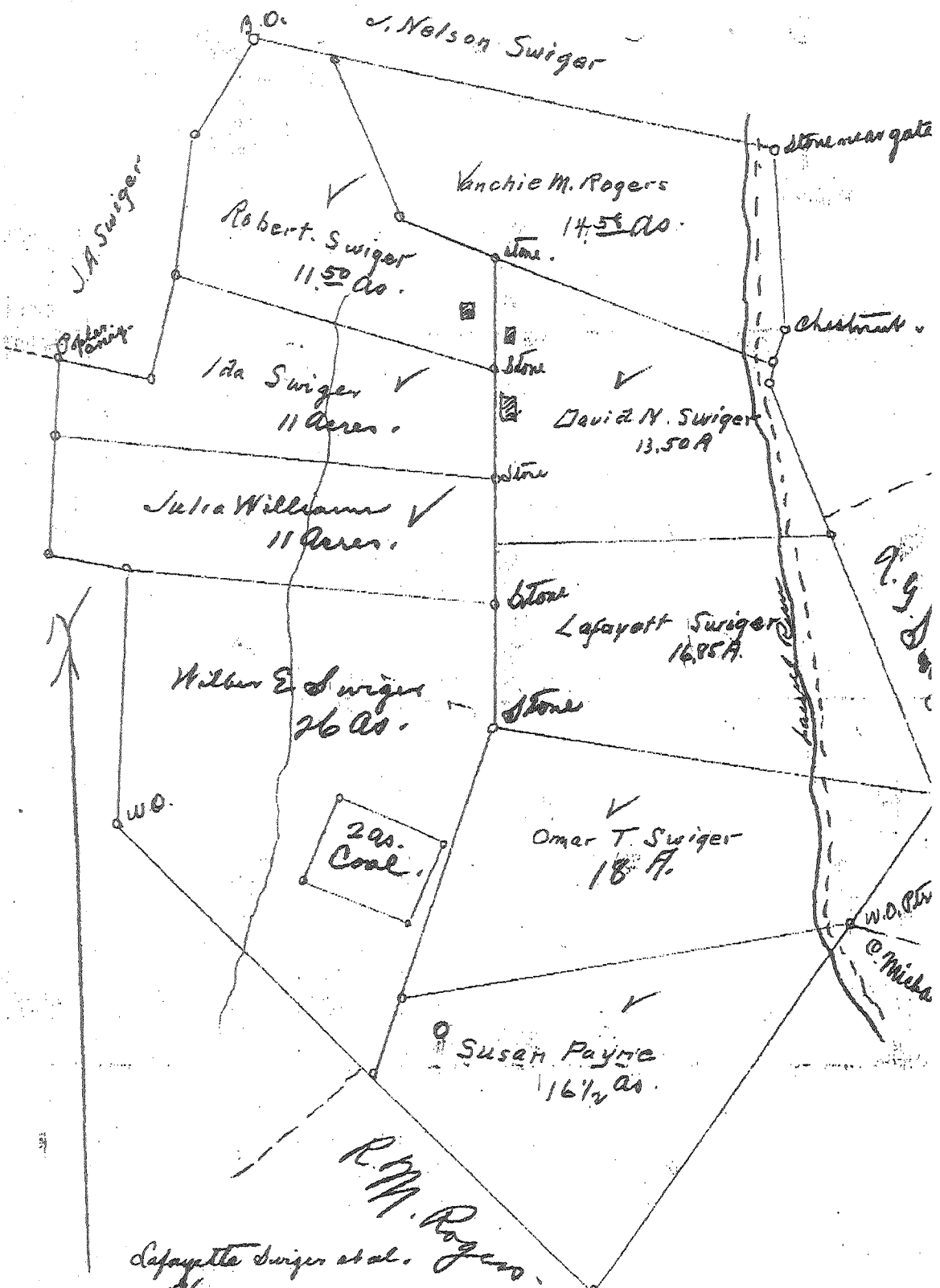
CLARKSBURG QUADRANGLE NW 1/4

EAGLE GAS CO. WELL 24
LAFAYETTE SWIGER WELL

1" = 300'

SCALED FROM MAP TR-1
AND LINE LOC. DWG. PAGE 40

33 2294



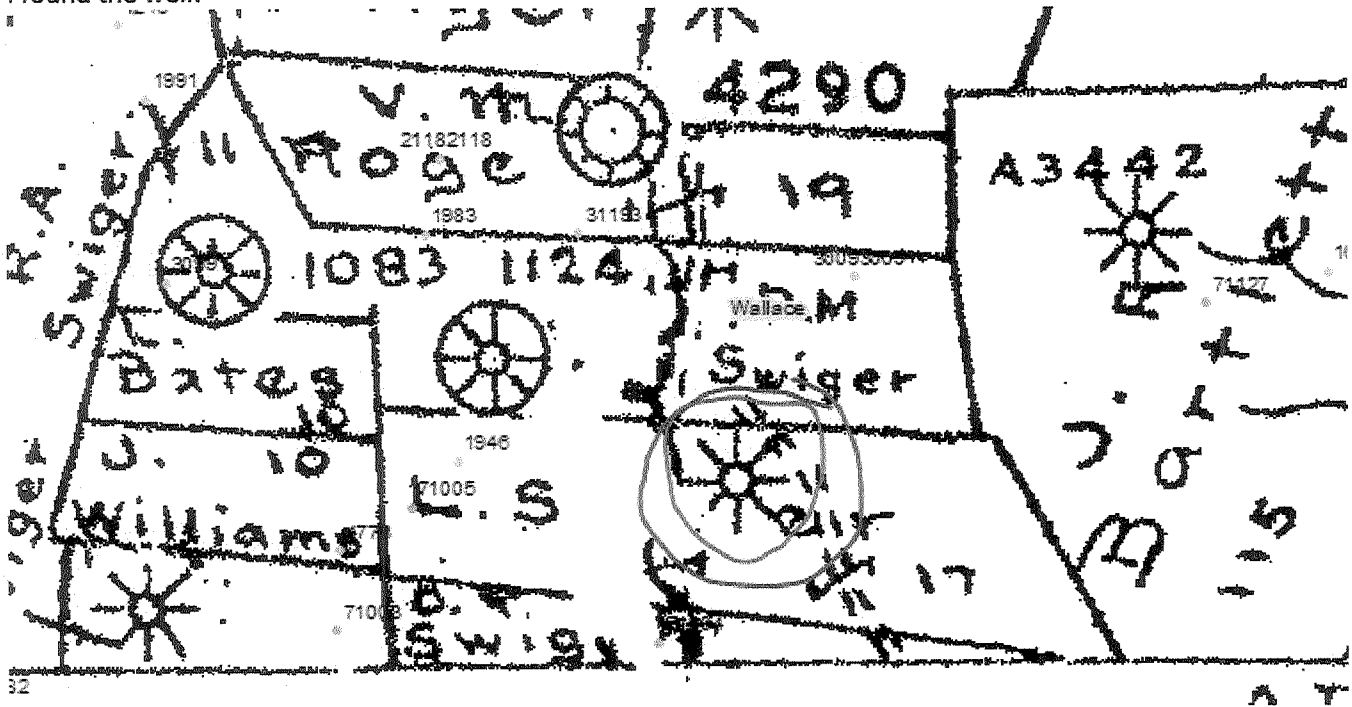
R.M. Rogers
 Lafayette Swiger et al. Jones
 Malvina Swiger
 D.B. 161 - Page 444

Pat Johns

From: Philip Dinterman <pdinterman@geosrv.wvnet.edu>
Sent: Thursday, October 27, 2016 3:35 PM
To: 'Pat Johns'
Subject: i found your well

Pat,

I found the well:



33-71004 is just to the South but I'm not sure if that is the same well.

Phil

STATE OF WEST VIRGINIA DEPARTMENT OF MINES, OIL AND GAS DIVISION

Date: March 1, 1997

FORM IV-35 (Obverse)

Operator's Well No. 24

[08-78]

WELL OPERATOR'S REPORT OF

API Well No. 47-33-2294 State County Perm

DRILLING, FRACTURING AND/OR STIMULATING, OR PHYSICAL CHANGE

WELL TYPE: Oil / Gas X / Liquid Injection / Waste Disposal (If "Gas", Production X / Underground storage / Deep / Shallow X /)

LOCATION: Elevation: N/A 1060 Watershed: Tenmile Creek District: Eagle 9 County: Harrison Quadrangle: Clarksburg N. W. 3/4 Wallace

WELL OPERATOR: Eagle Gas Company DESIGNATED AGENT: Lorna Hill Address: 211 Main Street Lumberport, W. Va. 26386

PERMITTED WORK: Drill / Convert / Drill deeper / Redrill / Fracture or stimulate Plug off old formation / Perforate new formation / Other physical change in well (specify)

PERMIT ISSUED ON 19 OIL & GAS INSPECTOR FOR THIS WORK: IF APPLICABLE: PLUGGING OF DRY HOLE ON CONTINUOUS PROGRESSION FROM DRILLING OR REWORKING. VERBAL PERMISSION OBTAINED

GEOLOGICAL TARGET FORMATION: Fifth Sand Depth 2280 feet Depth of completed well, 2301 feet Rotary / Cable Tools X Water strata depth: Fresh, 85 feet; salt, 730 feet. Coal seam depths: Below Is coal being mined in the area? X Work was commenced June 19 11, and completed July 18, 1911

LOGGING AND TUBING PROGRAM

Table with columns: LOGGING OR TUBING TYPE, SPECIFICATIONS (Size, Grade, Weight per ft, New, Used), FOOTAGE INTERVALS (For drilling, Left in well), CEMENT FILL-UP OR SACKS (Cubic feet), PACKERS. Rows include Conductor, Fresh water, 2 1/2", Intermediate, Production, and Logging liners.

PERMITS FLOW DATA

Producing formation Fifth Sand Pay zone depth 2281 feet Gas: Initial open flow, 1,243 Mcf/d Oil: Initial open flow, Bbl/d Final open flow, Mcf/d Final open flow, Bbl/d Time of open flow between initial and final tests, hours Static rock pressure, N/A psig (surface measurement) after hours shut in [If applicable due to multiple completion--] Second producing formation Pay zone depth feet Gas: Initial open flow, Mcf/d Oil: Initial open flow, Bbl/d Final open flow, Mcf/d Final open flow, Bbl/d Time of open flow between initial and final tests, hours Static rock pressure, psig (surface measurement) after hours shut in

FORM IV-35
(Reverse)

[08-78]

33 2294

DETAILS OF PERFORATED INTERVALS, FRACTURING OR STIMULATING, PHYSICAL CHANGE, ETC.

N/A

WELL LOG

FORMATION	Color	Hard or Soft	Feet		Remarks Including indication of all fres and salt water, coal, oil and ga
			Top	Bottom	
Below Coal			85		
Little Dunkard			325	350	Fresh Water
Big Dunkard			370	470	
Gas Sand			510	560	Fresh Water 445
Salt Sands			598	895	
Little Lime			1201	1216	Salt Water 730'
Pencil Cave			1219	1229	
Big Lime			1229	1300	
Big Injun			1300	1376	
Squaw			1392	1414	Gas 1392
Fifty Foot			1743	1763	
Thirty Foot			1779	1785	
Gordan Stray			1821	1877	Gas 1838
Fourth Sand			2107	2134	
Fifth Sand			2280	2283	Gas 2281
T. D.				2301	

(Attach separate sheets to complete as necessary)

Eagle Gas Company

Well Operator

By

Its Chief Executive Officer

NOTE: Regulation 2.02(i) provides as follows:

"The term 'log' or 'well log' shall mean a systematic, detailed geological record of all formations, including coal, encountered in the drilling of a well."