

WW-7  
8-30-06



West Virginia Department of Environmental Protection  
Office of Oil and Gas

**WELL LOCATION FORM: GPS**

API: 47-033-02313 WELL NO.: Y3  
 FARM NAME: Huber, Jn  
 RESPONSIBLE PARTY NAME: XTO Energy, Inc.  
 COUNTY: Harrison DISTRICT: Sardis  
 QUADRANGLE: Wolf Summit  
 SURFACE OWNER: Rossco Limited Liability Company  
 ROYALTY OWNER: See attached  
 UTM GPS NORTHING: 4358508.14  
 UTM GPS EASTING: 549373.43 GPS ELEVATION: 347.47

The Responsible Party named above has chosen to submit GPS coordinates in lieu of preparing a new well location plat for a plugging permit or assigned API number on the above well. The Office of Oil and Gas will not accept GPS coordinates that do not meet the following requirements:

1. Datum: NAD 1983, Zone: 17 North, Coordinate Units: meters, Altitude: height above mean sea level (MSL) – meters.
2. Accuracy to Datum – 3.05 meters
3. Data Collection Method:  
 Survey grade GPS  : Post Processed Differential

Real-Time Differential

Mapping Grade GPS  : Post Processed Differential

Real-Time Differential

4. **Letter size copy of the topography map showing the well location.**

I the undersigned, hereby certify this data is correct to the best of my knowledge and belief and shows all the information required by law and the regulations issued and prescribed by the Office of Oil and Gas.

T. J. Sans  
Signature

Regulatory Coordinator  
Title

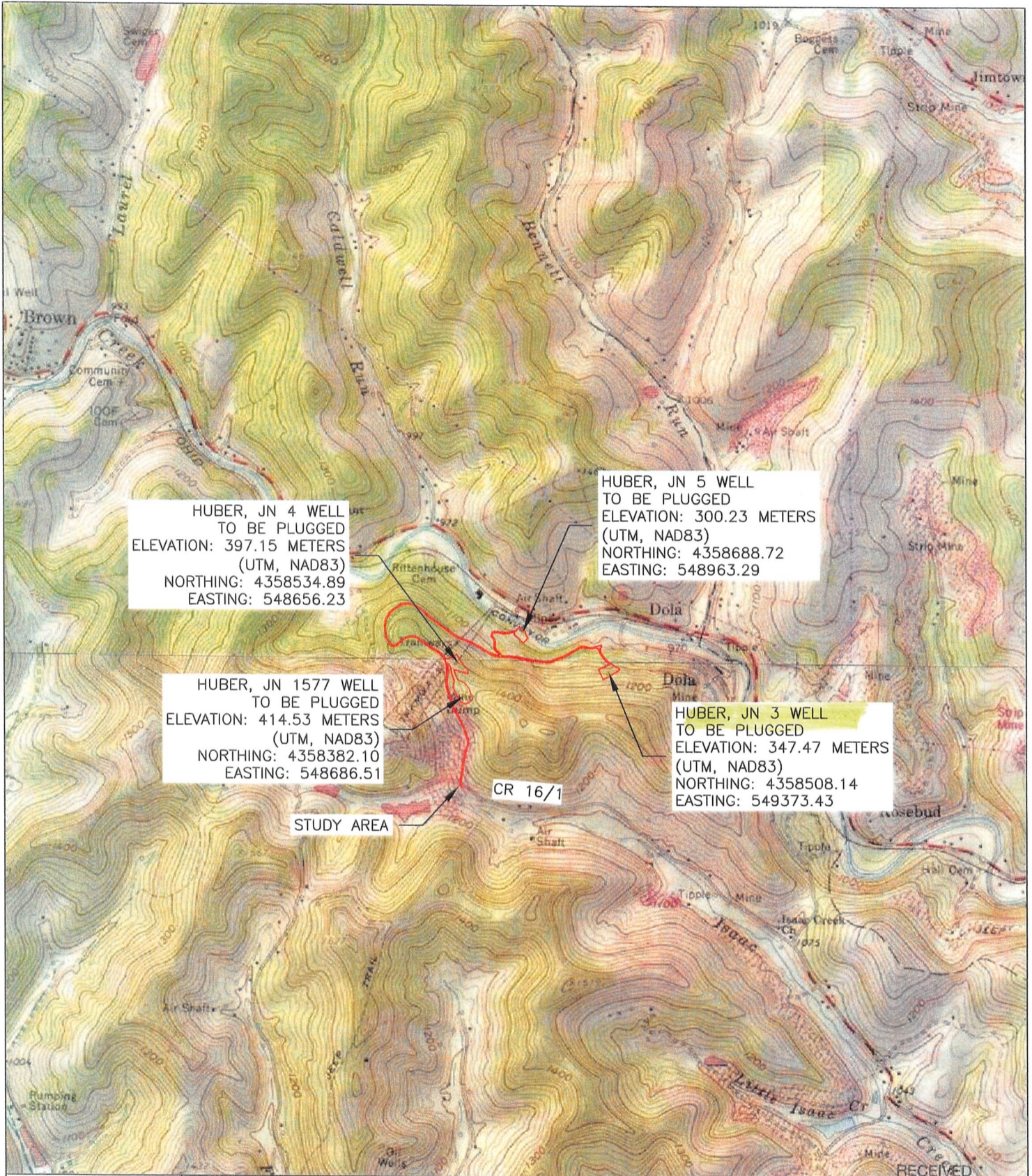
4/4/19  
Date

RECEIVED  
Office of Oil and Gas

MAY 14 2019

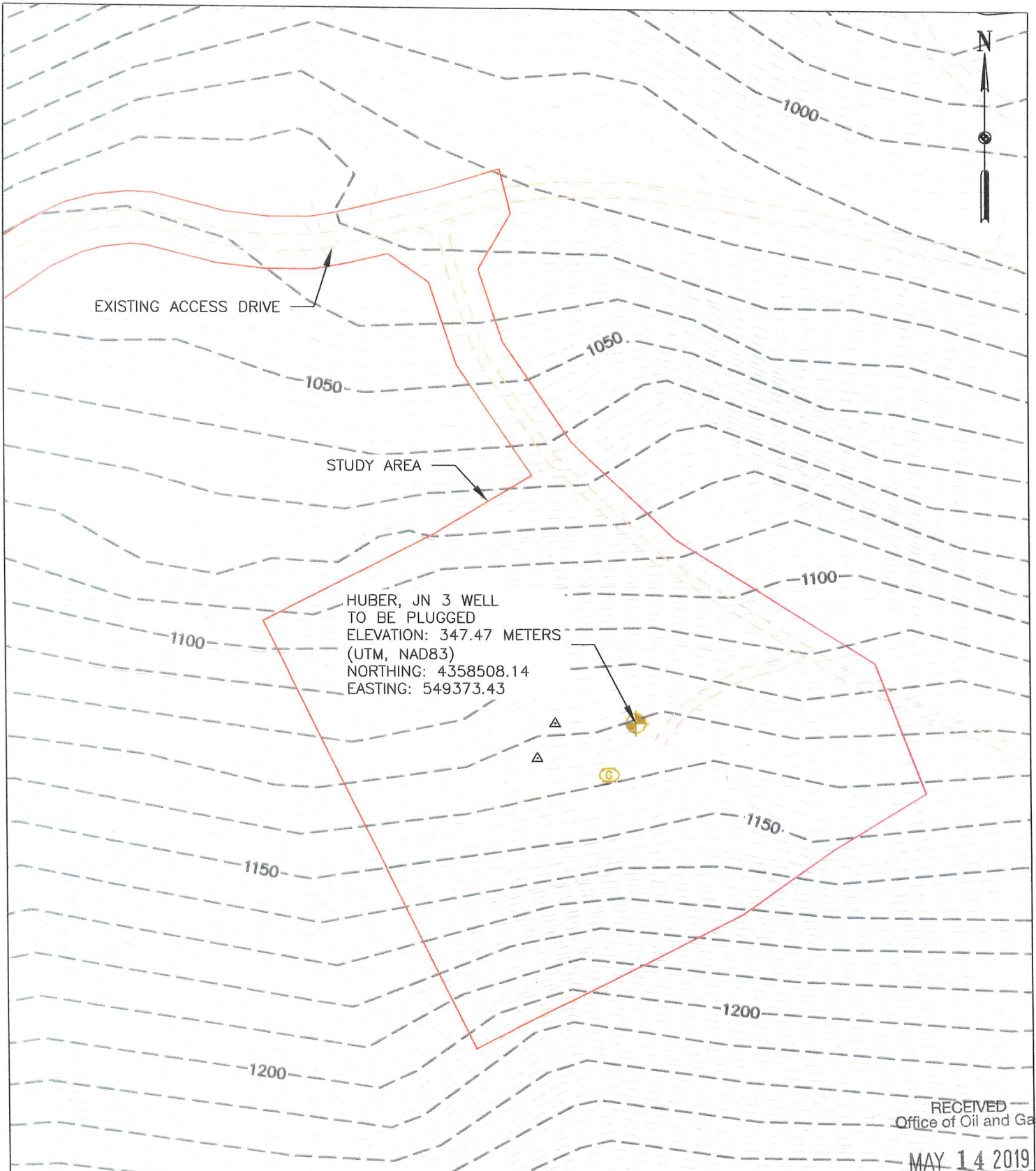
WV Department of  
Environmental Protection





SCALES HORIZ: 1" = 2000' VERT: CONTOUR INT: 20'	DESN BY: <u>SDG</u> DRWN BY: <u>SDG</u> RVWD BY: <u>MMV</u> FLD BK: BK PG: DATE: <u>03/8/19</u>	REV. BY: _____ DATE: _____ DESC.: _____ REV. BY: _____ DATE: _____ DESC.: _____ REV. BY: _____ DATE: _____ DESC.: _____ REV. BY: _____ DATE: _____ DESC.: _____	RECEIVED Office of Oil and Gas MAY 14 2019 WV Department of
	SHEET NUMBER: 1 OF 1	USGS MAP - WALLACE & WOLF SUMMIT QUADRANGLES <b>HUBER, JN WELLS</b> FOR: XTO ENERGY, INC. CR 16/1, SARDIS DISTRICT, HARRISON COUNTY, WEST VIRGINIA	





<b>SCALES</b> HORIZ: 1"=100' VERT: CONTOUR INT: 2'	DESN BY: SDG DRWN BY: SDG RVWD BY: MMV FLD BK: BK PG: DATE: 3/8/19	REV. BY: _____ DATE: _____ DESC.: _____ REV. BY: _____ DATE: _____ DESC.: _____ REV. BY: _____ DATE: _____ DESC.: _____ REV. BY: _____ DATE: _____ DESC.: _____	WV Department of Environmental Protection
---	---	--	--

SHEET NUMBER:  
1 OF 1

TOPOGRAPHIC MAP  
**HUBER, JN WELLS**  
 FOR: XTO ENERGY, INC.  
 CR 16/1, SARDIS DISTRICT, HARRISON COUNTY, WEST VIRGINIA

**MORRIS KNOWLES & ASSOCIATES, INC.**  
 A HAMMONTREE COMPANY  
 ENGINEERS, PLANNERS, SURVEYORS  
 443 ATHENA DRIVE DELMONT, PA 15626  
 PHN: (724) 468-4622 FAX: (724) 468-8940  
 www.morrisknowles.com