

WW-7
8-30-06



West Virginia Department of Environmental Protection
Office of Oil and Gas
WELL LOCATION FORM: GPS

API: 47-033-02680 WELL NO.: B-459

FARM NAME: George Vincent

RESPONSIBLE PARTY NAME: Mike Ross

COUNTY: Harrison DISTRICT: Sardis

QUADRANGLE: Wallace

SURFACE OWNER: American Mountaineer Energy Inc. c/o Murray Energy Corp

ROYALTY OWNER: George Vincent et. ux.

UTM GPS NORTHING: 4359425.4

UTM GPS EASTING: 546462.6 GPS ELEVATION: 1311'

The Responsible Party named above has chosen to submit GPS coordinates in lieu of preparing a new well location plat for a plugging permit or assigned API number on the above well. The Office of Oil and Gas will not accept GPS coordinates that do not meet the following requirements:

1. Datum: NAD 1983, Zone: 17 North, Coordinate Units: meters, Altitude: height above mean sea level (MSL) – meters.
2. Accuracy to Datum – 3.05 meters
3. Data Collection Method:

Survey grade GPS : Post Processed Differential
Real-Time Differential

Mapping Grade GPS : Post Processed Differential
Real-Time Differential

4. **Letter size copy of the topography map showing the well location.**

I the undersigned, hereby certify this data is correct to the best of my knowledge and belief and shows all the information required by law and the regulations issued and prescribed by the Office of Oil and Gas.

Mike Ross
Signature

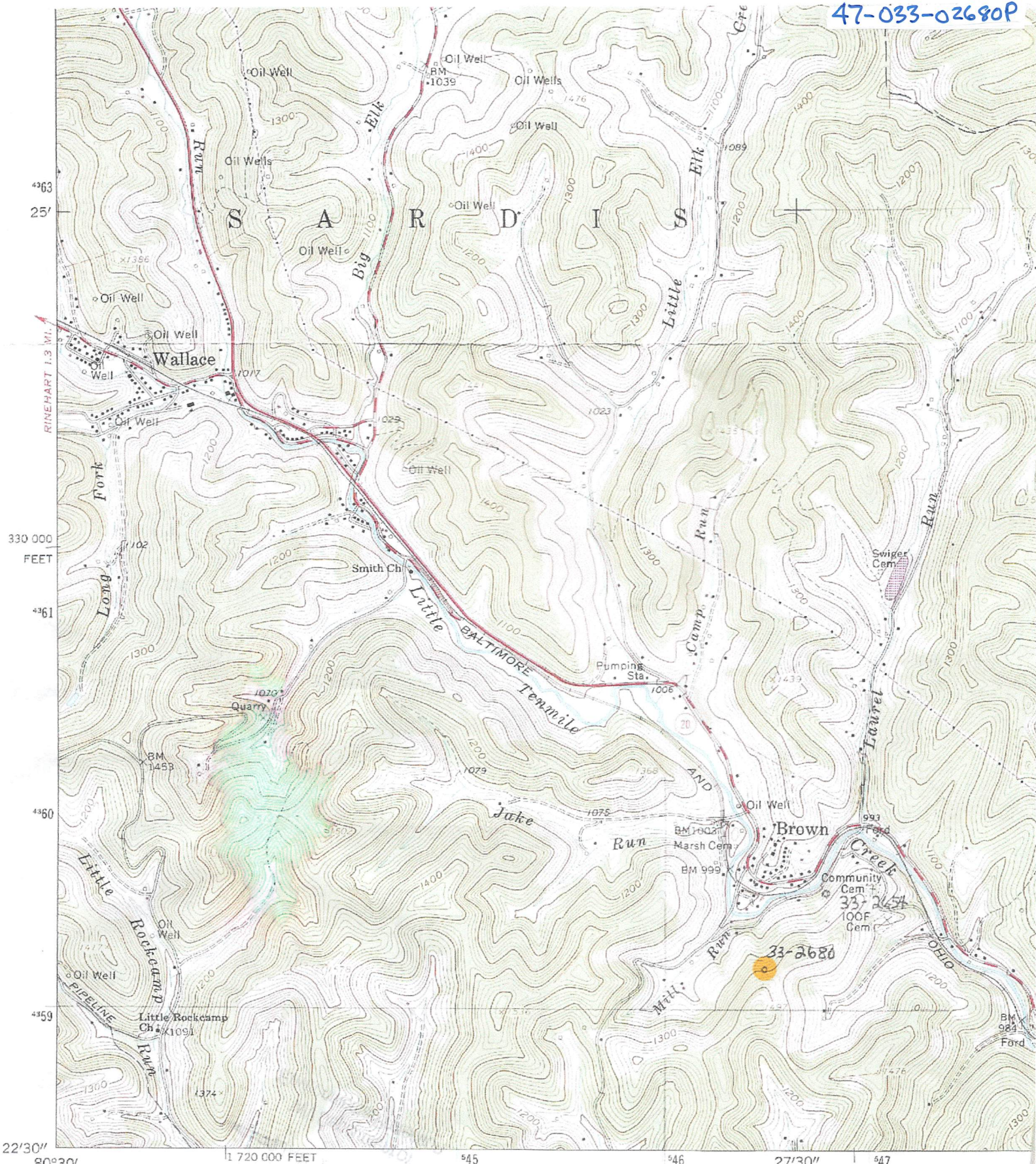
President
Title

11-14-2019
Date

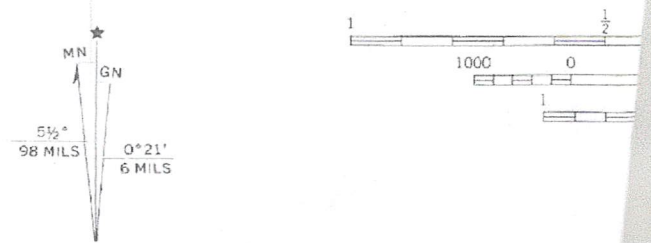
RECEIVED
Office of Oil and Gas

JAN 10 2020

WV Department of
Environmental Protection



Mapped, edited, and published by the Geological Survey
 Control by USGS and USC&GS
 Topography by photogrammetric methods from aerial
 photographs taken 1957. Field checked 1960
 Polyconic projection. 1927 North American datum
 10,000-foot grid based on West Virginia coordinate system,
 north zone
 1000-meter Universal Transverse Mercator grid ticks,
 zone 17. shown in blue



22' 30"

80° 30'

49° 59'

49° 60'

49° 61'

330 000 FEET

49° 63'

25'

49° 63'

25'

49° 63'

80° 30'

49° 59'

49° 60'

49° 61'

330 000 FEET

49° 63'

25'

49° 63'

25'

49° 63'