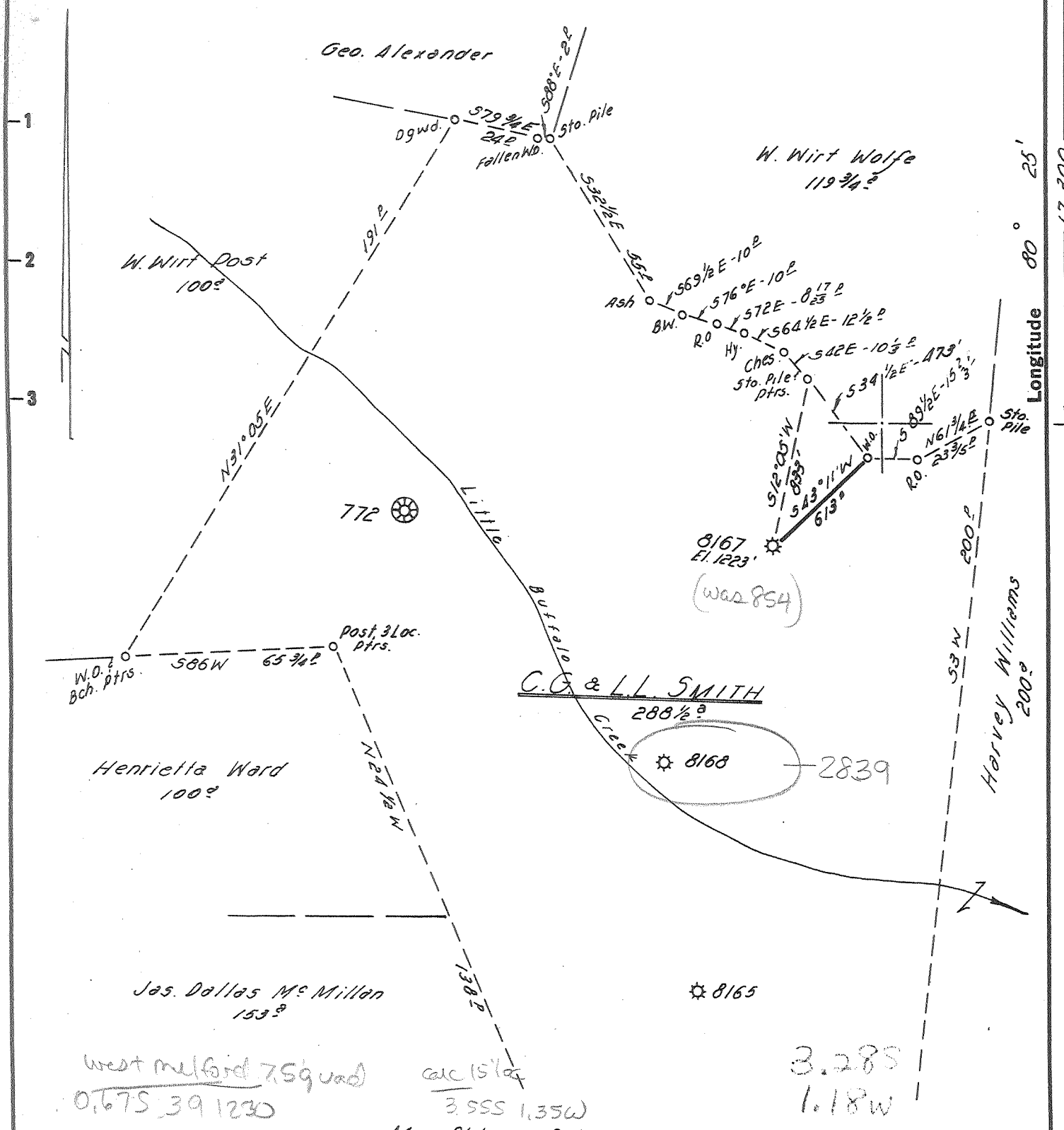


Latitude 39° 15'

6200

Longitude 80° 25' 17,300



Minimum Error of Closure... 1/4 IN. 600'

Source of Elevation... ELEV. FROM... O.M. MILFORD BRIDGE... ELEV. 979.0'

New Location...

Drill Deeper...

Abandonment...

"I, the undersigned, hereby certify that this map is correct to the best of my knowledge and belief and shows all the information required by paragraph 6 of the rules and regulations of the oil and gas section of the mining laws of West Virginia."

Company HOPE NATURAL GAS CO.

Address CLARKSBURG W. VA.

Farm C.G. & L.L. SMITH

Tract _____ Acres 288 1/2 Lease No. 52930

Well (Farm) No. _____ Serial No. 8167 ⁸¹⁶⁸

Elevation (Spirit Level) 1223'

Quadrangle WESTON N.W.

County HARRISON District UNION

Engineer Jackson M. Jarrow

Engineer's Registration No. 2397

File No. _____ Drawing No. _____

Date 1-15-65 Scale 1"=40 FEET

STATE OF WEST VIRGINIA
DEPARTMENT OF MINES
OIL AND GAS DIVISION
CHARLESTON

WELL LOCATION MAP

FILE NO. HAR-1832-A
2839- was 03373678

+ Denotes location of well on United States Topographic Maps, scale 1 to 62,500, latitude and longitude lines being represented by border lines as shown.

- Denotes one inch spaces on border line of original tracing.

DEEP WELL

Deep Well

L. L. Smith No. 918 Well.

T. H. 2224's # →
9026

Union District, Harrison County, W. Va.
By Reserve Gas Company.
Har-E on map.
Elevation, 1057' L.
660 M. cu. ft. gas (shallow sands).
Located 3.78 mi. S. of 39° 15' and 1.26 mi. W. of 80° 25'—NW—
Weston Quadrangle.
On south side of western branch of Buffalo Creek.
2.0 mi. W. of West Milford; 1.4 mi. N. of Goodhope.

Har - B

	Top.	Bottom.	Thickness.	Elevation (top)
Big Lime -----	1297	1368	71	- 240
Big Injun Sand -----	1368	1468	100	- 311
Berea Sand -----	1717	1735	18	- 660
Corniferous Lime -----	6813	6824	11+	-5756

Thickness, Devonian Shales, 5078 feet. Total depth, 6824' (461)

Remarks: Shut down Nov. 4, 1925 at 6824'.
Completed 1927?
Fishing job after setting 6 3/8" casing at 6805' (June 3, 1926).
Starts 125' below Pittsburgh Coal.
Water, 40', 60' and 658-75'. Show gas, 1024'. Gas, 1383'. Gas, 1821'.
Gas, 2187' and 2201'. Gas, 2880'. 18/10 M. in 2" from 50', 5th and
Speechley Sands (660 M.). Gas pockets, 6648', 6675-81', 6734'.
6766-75', 6794', 6798', 6800', and 6813'. Gas pockets blew out at
once.
Temperature measurements to 6000'. At 6000', 132.5° F.
Samples from 2893 to 6824'.

See sample studies
for expanded
stratigraphy

NOW - 033 - 2839

was also 033 73678

Union District, Harrison County, W. Va.

By Reserve Gas Co., Clarksburg, W. Va.

Elevation, 1057' L.

On South side of western branch of Buffalo Creek.

Located 2.0 mi. W. of West Milford and 1.14 mi. N. of Goodhope.

Located 3.78 mi. S. of 39° 15' and 1 1/29 mi. W. of 80° 25' - NW 1/4 -
Weston Quadrangle.

Record to RGT from John T. Galey 4-3-35.

10" casing, 2962'; 8", 5043'; 6 3/8", 6805'.

Temperature at 6000', 132.5° F. (O&G Jnl. 5-17-28, F.F. Robinson).

Gas well in shallow sands.

Starts about 125' below Pittsburgh Coal.

Sample record, Devonian Shales (2893-6824') published in Vol. XI,
W. Va. Geological Survey, pp. 109-111 (Martens) (1939).

Summarized record published on p. 64, Vol. XVI, W. Va. Geological
Survey (Tucker) (1944).

	Top.	Bottom.
Unrecorded (water, 40' - 7 bailers per hour) (water, 60' - could not lower bailing)	0	316
✓Coal	316	318
Unrecorded	318	370
✓Sand, Big Dunkard	370	424
Unrecorded	424	621
✓Gas Sand	621	635
Unrecorded	635	640
✓Sand, First Salt (water, 658-675', 1 1/2 bailers per hour)	640	680
Unrecorded	680	696
✓Second Salt Sand	696	896
Unrecorded	896	906
✓Third Salt Sand (show gas, 1024', ex- hausted)	906	1062
Unrecorded	1062	1109
✓Maxton Sand	1109	1137
Unrecorded	1137	1253
✓Little Lime	1253	1282
✓Shale, Pencil Cave	1282	1297
✓Big Lime	1297	1368
✓Big Injun Sand (gas, 1383'; test, 6/10 W. in 1/2")	1368	1468
Unrecorded	1468	1517
✓Squaw Sand	1517	1531
Unrecorded (Berea, 1625', J.F.R.)	1531	1717
✓Sand, Gantz (Berea?)	1717	1735
Unrecorded	1735	1776
Sand, Fifty-foot (Gantz)	1776	1815
Break	1815	1818
✓Sand, Fifty-foot (gas, 1821'; test, 8/10 W. in 2")	1818	1857
Unrecorded	1857	1875
✓Sand, Thirty-foot	1875	1884
Unrecorded	1884	2008
✓Gordon Stray Sand	2008	2024
Unrecorded	2024	2027
✓Gordon Sand	2027	2052

(OVER)

Deep Well

	Top.	Bottom.
Unrecorded	2052	- 2117
✓ Fourth Sand	2117	- 2133
Unrecorded	2133	- 2185
✓ Fifth Sand (gas, 2187 and 2201')	2185	- 2203
Slate	2203	- 2243
Lime shells	2243	- 2278
Slate	2278	- 2330
Lime	2330	- 2400
Hard lime	2400	- 2409
Lime	2409	- 2427
Slate and lime shells	2427	- 2439
Slate	2439	- 2460
Lime	2460	- 2474
Slate and shells	2474	- 2517
Lime	2517	- 2538
Slate and shells	2538	- 2563
Lime	2563	- 2575
Hard lime	2575	- 2582
Slate	2582	- 2600
Shale	2600	- 2618
Slate and shells	2618	- 2657
Lime	2657	- 2684
Slate and shells	2684	- 2711
Lime	2711	- 2722
Slate	2722	- 2725
Lime	2725	- 2800
Slate	2800	- 2822
Lime	2822	- 2833
Slate and shells	2833	- 2862
Gritty lime	2862	- 2877
✓ Speechley Sand (gas, 2880', 18/10 Merc. in 2" from 50-Ft., 5th, and Speech- ley Sands)	2877	- 2887
Lime	2887	- 2898
Gritty lime	2898	- 2910
Lime shells	2910	- 2940
Slate and shells	2940	- 2959
Lime	2959	- 2967
Shale	2967	- 2973
Lime	2973	- 2980
Slate	2980	- 2983
Lime	2983	- 2989
Lime, slate, and shells	2989	- 3019
Lime	3019	- 3026
Slate and lime shells	3026	- 3032
Slate	3032	- 3038
White lime	3038	- 3045
Gray lime	3045	- 3057
Dark lime shells	3057	- 3070
Gritty gray lime	3070	- 3101
Dark lime	3101	- 3120
Gritty white slate	3120	- 3143
Dark slate and lime shells	3143	- 3166
Gray lime shells	3166	- 3188
White slate	3188	- 3198
Hard gray lime	3198	- 3205

(Continued on p. 3)

	Top.	Bottom.
Slate	3205	- 3212
White slate and lime shells	3212	- 3235
Gray lime	3235	- 3246
Slate	3246	- 3255
Slate and lime shells	3255	- 3300
Light slate	3300	- 3325
Slate	3325	- 3337
Lime	3337	- 3343
Slate	3343	- 3349
White slate	3349	- 3374
Dark slate	3374	- 3399
White slate	3399	- 3427
Lime	3427	- 3448
Gray slate	3448	- 3476
Brown slate	3476	- 3505
Slate	3505	- 3518
Lime	3518	- 3530
Gray lime	3530	- 3539
Light slate	3539	- 3550
Gray lime	3550	- 3562
Dark slate	3562	- 3574
Slate	3574	- 3592
Dark lime	3592	- 3599
Dark gritty lime	3599	- 3622
Dark slate and lime shells	3622	- 3693
Light slate and lime shells	3693	- 3736
Gray slate and lime shells	3736	- 3776
Slate	3776	- 3788
Lime	3788	- 3792
Gray slate and lime shells	3792	- 3872
Light slate and lime shells	3872	- 3912
Gray slate and lime shells	3912	- 3932
Light slate and lime shells	3932	- 3952
Gray slate	3952	- 3980
White slate and lime shells	3980	- 4000
Lime	4000	- 4015
Dark gritty lime	4015	- 4022
Gray slate and gritty shells	4022	- 4033
Brown gritty slate	4033	- 4043
Hard white lime	4043	- 4053
White slate and lime shells	4053	- 4073
Gray slate and lime shells	4073	- 4093
White slate and lime shells	4093	- 4135
Gray slate	4135	- 4156
Hard black gritty lime	4156	- 4169
Hard dark gritty lime	4169	- 4179
Dark lime shells	4179	- 4182
Gritty lime	4182	- 4187
Dark lime	4187	- 4192
Gray lime	4192	- 4201
Gray gritty lime	4201	- 4220
Slate and lime shells	4220	- 4230
White slate and lime shells	4230	- 4250
Slate and lime shells	4250	- 4265
Gray slate and lime shells	4265	- 4281
White slate and lime shells	4281	- 4300

(Continued, OVER, p. 4)

	Top.	Bottom.
Lime shells	4300	- 4316
Open lime	4316	- 4323
Gray slate and lime shells	4323	- 4330
White slate and lime shells	4330	- 4363
Gray slate and lime shells	4363	- 4372
White slate and lime shells	4372	- 4397
Gray lime	4397	- 4409
Gray slate	4409	- 4424
White slate and lime shells	4424	- 4457
Dark slate	4457	- 4468
Dark slate and lime shells	4468	- 4488
White slate	4488	- 4497
Lime	4497	- 4503
Gray lime	4503	- 4515
Slate and lime shells	4515	- 4532
White slate and lime shells	4532	- 4547
Slate and lime shells	4547	- 4561
Gray lime shells	4561	- 4712
Gritty lime shells	4712	- 4728
Gray lime	4728	- 4753
White slate and lime shells	4753	- 4768
White slate	4768	- 4785
Gray slate and lime	4785	- 4800
White slate	4800	- 4818
White slate and lime shells	4818	- 4831
Gray slate and lime shells	4831	- 4845
Dark slate	4845	- 4863
Black slate	4863	- 4869
Black lime	4869	- 4883
Dark slate and lime shells	4883	- 4892
Dark slate	4892	- 4908
White slate	4908	- 4912
Gray slate	4912	- 4946
White slate	4946	- 4961
Brown slate	4961	- 4980
Dark slate	4980	- 5034
Brown slate	5034	- 5042
Lime	5042	- 5043
Lime shell	5043	- 5052
Dark-gray lime	5052	- 5064
Dark slate	5064	- 5075
Dark lime	5075	- 5088
Gray lime	5088	- 5097
Brown slate	5097	- 5102
Black slate	5102	- 5116
Gray slate and lime shells	5116	- 5124
Lime shells	5124	- 5128
Dark lime	5128	- 5138
Brown slate	5138	- 5142
Black lime	5142	- 5190
Gray slate and dark lime	5190	- 5205
Dark slate and lime shells	5205	- 5217
Black slate	5217	- 5231
Dark slate	5231	- 5396
Black slate	5396	- 5440
Brown slate	5440	- 5463

(Continued on p. 5)

	Top.	Bottom.
Dark slate	5463	- 5518
Gray slate	5518	- 5537
Black slate	5537	- 5657
Dark slate	5657	- 5686
Lime	5686	- 5692
Gray slate	5692	- 5876
Hard gray lime	5876	- 5881
Gray slate	5881	- 6034
Dark lime shell	6034	- 6037
Gritty lime	6037	- 6050
Dark lime	6050	- 6055
Gray slate	6055	- 6068
Dark slate	6068	- 6158
Gray slate	6158	- 6295
Dark slate	6295	- 6315
White slate	6315	- 6327
Dark slate	6327	- 6367
Brown shale	6367	- 6387
Dark shale	6387	- 6407
Brown shale	6407	- 6442
Lime shell	6442	- 6447
Dark shale	6447	- 6478
Brown shale	6478	- 6510
Dark slate	6510	- 6530
Black shale	6530	- 6536
Lime shells	6536	- 6540
Black shale	6540	- 6550
Black lime	6550	- 6580
Gray lime	6580	- 6585
Dark lime	6585	- 6617
Brown shale	6617	- 6625
Dark slate	6625	- 6645
Brown slate (gas pocket, 6648')	6645	- 6665
Black slate (gas pocket, 6675-6681')	6665	- 6689
Dark slate	6689	- 6711
Black slate	6711	- 6719
Dark shale (gas pocket, 6734')	6719	- 6734
Dark slate (gas pocket, 6766-6775')	6734	- 6777
Dark slate (gas pocket, 6794-6798' and 6800')	6777	- 6810
✓ Hard lime (top Corniferous, 6813', from sample examination by Martens) (gas pocket, 6813')	6810	- 6815
Hard black lime,	6815	- 6824
Total depth		6824

(Remark: Gas pockets blew out at once).

461

3550 - 3565	Lime, soft	3915 - 3950	Lime, hard
3565 - 3575	Lime, hard	3950 - 3958	Slate
3575 - 3590	Slate, soft	3958 - 4000	Lime, soft
3590 - 3615	Lime, hard	4000 - 4015	Lime, hard
3615 - 3621	Slate	4100 - 4110	Slate
3621 - 3628	Lime shells, hard	4110 - 4130	Lime, hard
3628 - 3638	Slate	4130 - 4150	Slate
3638 - 3655	Lime, hard	4150 - 4162	Lime, hard
3655 - 3680	Slate	4162 - 4185	Lime, soft
3680 - 3690	Lime, soft	4185 - 4220	Slate
3690 - 3700	Slate	4220 - 4240	Lime
3700 - 3724	Lime, hard	4240 - 4250	Slate
3724 - 3745	Slate	4250 - 4260	Lime
3745 - 3765	Lime, hard	4260 - 4265	Unrecorded
3765 - 3850	Slate	4265 - 4274	Benson Sand (gas at 4270')
3850 - 3900	Lime, hard	4290	Total depth
3900 - 3915	Slate and shells		

Harrison

L. L. Smith No. 918 Well

2839

(was

Harr. B)

(80002)

Union District, Harrison County, W. Va.
By Reserve Gas Co., 445 W. Main St., Clarksburg, W. Va.
Located 2 mi. W. of West Milford, and 1.14 mi. N. of Goodhope,
on south side of western branch of Buffalo Creek.
2.04 mi. N. of 39° 10' and 3.26 mi. E. of 80° 30'—NW—Weston
Quadrangle.

Elevation, 1057' L. Starts about 125' below Pittsburgh Coal (by
str. contour).

Completed 1927(?).

Temperature measurements made by J. French Robinson to a depth
of 6000' were published in the Oil and Gas Journal, p. 158, May
17, 1928. At 6000' the temperature was reported as 132.5° F.
10" casing, 2962'; 8", 5043'; 6%", 6805' (parted at 2300').

Gas pockets blew out at once. Well being produced from shallow
sands.

0 - 316	Unrecorded (water, 40'; 7 bailers per hr.) (water, 60'; could not lower bail- ing)	1253 - 1282	Lime, Little Lime
316 - 318	Coal	1282 - 1297	Shale, Pencil Cave
318 - 370	Unrecorded	1297 - 1368	Lime, Big Lime
370 - 424	Sand, Big Dunkard	1368 - 1468	Sand, Big Injun (gas, 1383', test 6/10 W. in 1/2")
424 - 621	Unrecorded	1468 - 1517	Unrecorded
621 - 635	Sand, Gas Sand	1517 - 1531	Sand, Squaw
635 - 640	Unrecorded	1531 - 1717	Unrecorded
640 - 680	Sand, 1st Salt (wa- ter, 658-75', 1 1/2 bail- ers per hour)	1717 - 1735	Sand, Berea
680 - 696	Unrecorded	1735 - 1776	Unrecorded
696 - 896	Sand, Second Salt	1776 - 1815	Sand, Gantz
896 - 906	Unrecorded	1815 - 1818	Break
906 - 1062	Sand, Third Salt (show gas, 1024', exhausted)	1818 - 1857	Sand, Fifty-foot (gas, 1821', test 8/10 W. in 2")
1062 - 1109	Unrecorded	1857 - 1875	Unrecorded
1109 - 1137	Sand, Maxton	1875 - 1884	Sand, Thirty-foot
1137 - 1253	Unrecorded	1884 - 2008	Unrecorded
		2008 - 2024	Sand, Gordon Stray
		2024 - 2027	Unrecorded
		2027 - 2052	Sand, Gordon
		2052 - 2117	Unrecorded

2117 - 2133 Sand, Fourth	3212 - 3235 White slate and lime shells
2133 - 2185 Unrecorded	
2185 - 2203 Sand, Fifth (gas, 2187' and 2201')	3235 - 3246 Lime, gray
2203 - 2243 Slate	3246 - 3255 Slate
2243 - 2278 Lime shells	3255 - 3300 Slate and lime shells
2278 - 2330 Slate	3300 - 3325 Slate, light
2330 - 2400 Lime	3325 - 3337 Slate
2400 - 2409 Lime, hard	3337 - 3343 Lime
2409 - 2427 Lime	3343 - 3349 Slate
2427 - 2439 Slate and lime shells	3349 - 3374 Slate, white
2439 - 2460 Slate	3374 - 3399 Slate, dark
2460 - 2474 Lime	3399 - 3427 Slate, white
2474 - 2517 Slate and shells	3427 - 3448 Lime
2517 - 2538 Lime	3448 - 3476 Slate, gray
2538 - 2563 Slate and shells	3476 - 3505 Slate, brown
2563 - 2575 Lime	3505 - 3518 Slate
2575 - 2582 Lime, hard	3518 - 3530 Lime
2582 - 2600 Slate	3530 - 3539 Lime, gray
2600 - 2618 Shale	3539 - 3550 Slate, light
2618 - 2657 Slate and shells	3550 - 3562 Lime, gray
2657 - 2684 Lime	3562 - 3574 Slate, dark
2684 - 2711 Slate and shells	3574 - 3592 Slate
2711 - 2722 Lime	3592 - 3599 Lime, dark
2722 - 2725 Slate	3599 - 3622 Lime, dark, gritty
2725 - 2800 Lime	3622 - 3693 Dark slate and lime shells
2800 - 2822 Slate	3693 - 3736 Light slate and lime shells
2822 - 2833 Lime	3736 - 3776 Gray slate and lime shells
2833 - 2862 Slate and shells	3776 - 3788 Slate
2862 - 2877 Lime, gritty	3788 - 3792 Lime
2877 - 2887 Sand, Speechley (gas, 2880') (18/10 M. in 2" from 50-ft., 5th and Speechley)	3792 - 3872 Gray slate and lime shells
2887 - 2898 Lime	3872 - 3912 Light slate and lime shells
2898 - 2910 Lime, gritty	3912 - 3932 Gray slate and lime shells
2910 - 2940 Lime shells	3932 - 3952 Light slate and lime shells
2940 - 2959 Slate and shells	3952 - 3980 Gray slate
2959 - 2967 Lime	3980 - 4000 White slate and lime shells
2967 - 2973 Shale	4000 - 4015 Lime
2973 - 2980 Lime	4015 - 4022 Lime, dark, gritty
2980 - 2983 Slate	4022 - 4033 Slate, gray, and gritty shells
2983 - 2989 Lime	4033 - 4043 Slate, brown, gritty
2989 - 3019 Lime, slate and shells	4043 - 4053 Lime, hard, white
3019 - 3026 Lime	4053 - 4073 Slate, white, and lime shells
3026 - 3032 Slate and lime shells	4073 - 4093 Slate, gray, and lime shells
3032 - 3038 Slate	4093 - 4135 Slate, white, and lime shells
3038 - 3045 Lime, white	4135 - 4156 Slate, gray
3045 - 3057 Lime, gray	4156 - 4169 Lime, hard, black, gritty
3057 - 3070 Lime shells, dark	4169 - 4179 Lime, hard, dark, gritty
3070 - 3101 Lime, gritty, gray Slate and gritty lime	
3101 - 3120 Lime, dark	
3120 - 3143 Slate, gritty, white	
3143 - 3166 Slate, dark and lime shells	
3166 - 3188 Lime shells, gray	
3188 - 3198 Slate, white	
3198 - 3205 Lime, hard, gray	
3205 - 3212 Slate	