

47-033-04864

WEST

Wallace, WV Scale: 1" = 0.379Mi 610Mt, 2,000Ft, 1 Mi = 2.640", 1 cm = 240Mt

ROAD CLASSIFICATION

- Heavy-duty ————
- Medium-duty - - - - -
- Light-duty ————
- Unimproved dirt - - - - -
- State Route ○



QUADRANGLE LOCATION

WALLACE, W. VA.

NW/4 CLARKSBURG 15' QUADRANGLE
N 3922.5 W 8022.5/7.5

1960
PHOTOREVISED 1978

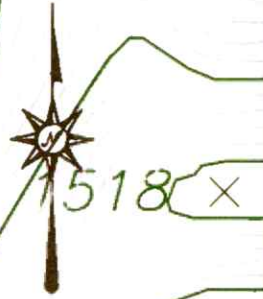
RECEIVED
Office of Oil and Gas
OCT 15 2024
WV Department of
Environmental Protection

11/01/2024

Well#47-033-04864

WALLACE WV 7.5' Quad 1471

Scale: 1" = 500'



Well#47-033-04864

Mine

1307

1300

Jimtown

RECEIVED
Office of Oil and Gas
OCT 15 2024
WV Department of
Environmental Protection

Strip
Mine

11/01/2024

Well#47-033-04864

WALLACE WV 7.5' Quad

Scale: 1" = 2000'

1315

A G L E



Stair Run

Robinson

Lyon Cem

Griffin Cem

Well#47-033-04864

Mine

Mine

Mine

Tipule

Tipule

Bogges Cem

Jintown

Strip Mine

x1379

x1307

x1471

1518 x

1504

1022

1500

1622

Creek

RECEIVED
Office of Oil and Gas
OCT 15 2024
WV Department of
Environmental Protection

11/01/2024

WW-7
8-30-06



West Virginia Department of Environmental Protection
Office of Oil and Gas

WELL LOCATION FORM: GPS

API: 47-033-04864 WELL NO.: ROGERS 2103

FARM NAME: ROGERS

RESPONSIBLE PARTY NAME: WEST VIRGINIA LAND RESOURCES INC.

COUNTY: HARRISON DISTRICT: EAGLE

QUADRANGLE: WALLACE WV

SURFACE OWNER: HARRISON COUNTY COAL

ROYALTY OWNER: _____

UTM GPS NORTHING: 4,361,977 m

UTM GPS EASTING: 551,516 m GPS ELEVATION: 325 m

The Responsible Party named above has chosen to submit GPS coordinates in lieu of preparing a new well location plat for a plugging permit or assigned API number on the above well. The Office of Oil and Gas will not accept GPS coordinates that do not meet the following requirements:

- Datum: NAD 1983, Zone: 17 North, Coordinate Units: meters, Altitude: height above mean sea level (MSL) – meters.
- Accuracy to Datum – 3.05 meters
- Data Collection Method:

Survey grade GPS : Post Processed Differential

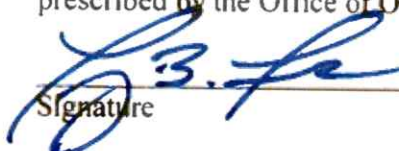
Real-Time Differential _____

Mapping Grade GPS _____ : Post Processed Differential _____

Real-Time Differential _____

- Letter size copy of the topography map showing the well location.**

I the undersigned, hereby certify this data is correct to the best of my knowledge and belief and shows all the information required by law and the regulations issued and prescribed by the Office of Oil and Gas.


Signature

PS 2002
Title

SEPTEMBER 24, 2024
Date

RECEIVED
Office of Oil and Gas

OCT 15 2024

WV Department of
Environmental Protection

11/01/2024