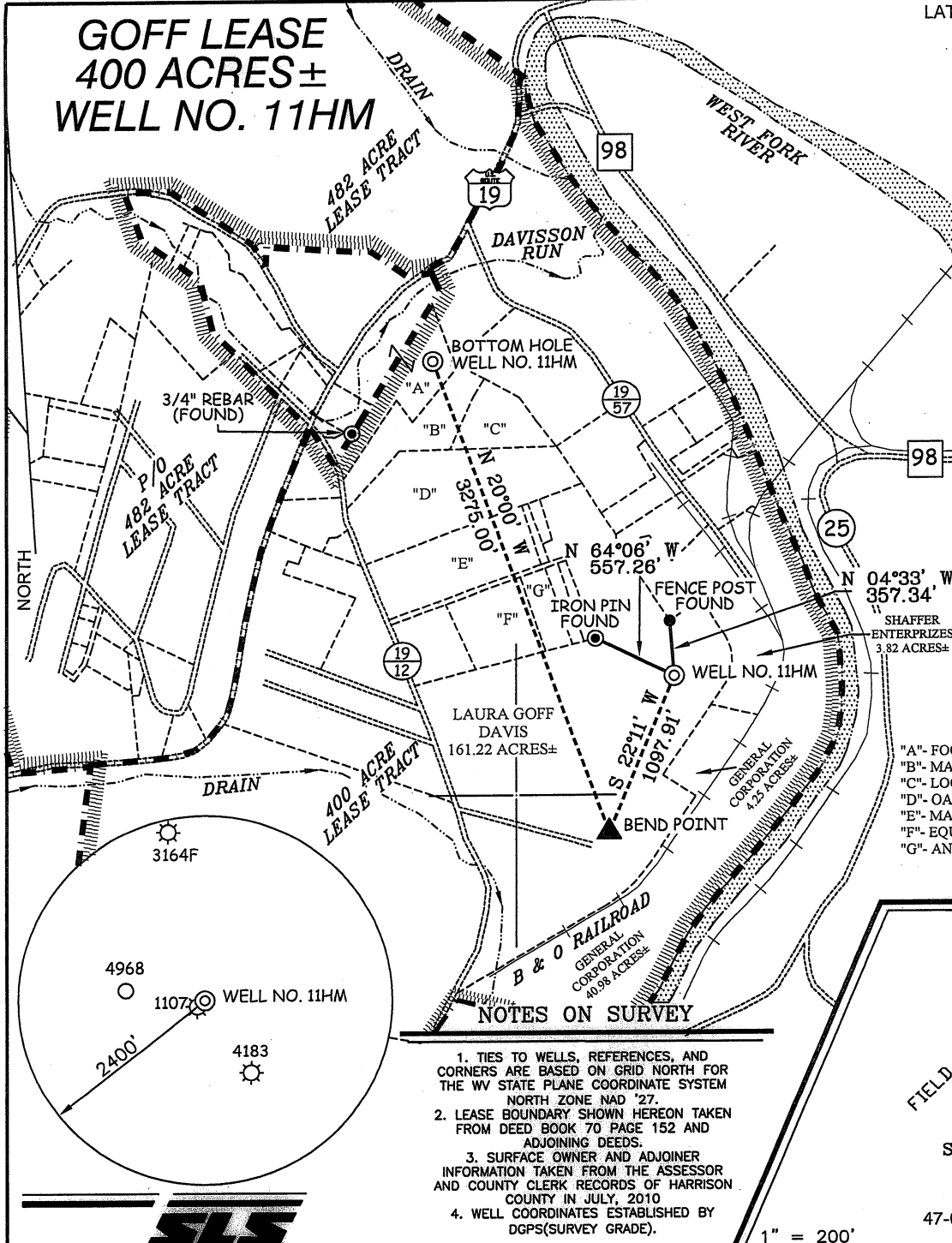


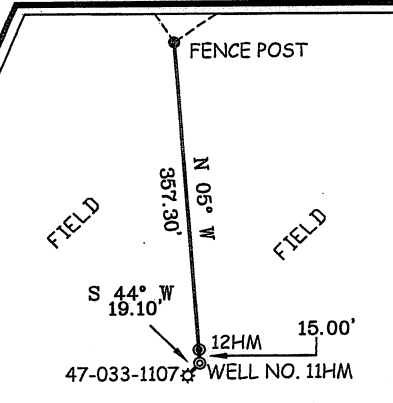
# GOFF LEASE 400 ACRES± WELL NO. 11HM



<b>WELL NO. 11HM TOP HOLE</b> STATE PLANE COORDINATES (NORTH ZONE NAD 27) N. 279,138 E. 1,755,023
<b>TOP HOLE (NAD'27)</b> LAT=(N) 39°15'47.4" LONG=(W) 80°21'54.7"
<b>TOP HOLE (NAD'83)</b> LAT=(N) 39°15'47.7" LONG=(W) 80°21'54.1"
<b>TOP HOLE UTM (NAD'83)</b> N. 4,346,183 E. 554,780
<b>WELL NO. 11HM BEND POINT</b> STATE PLANE COORDINATES (NORTH ZONE NAD 27) N. 278,121 E. 1,754,608
<b>BEND POINT (NAD'27)</b> LAT=(N) 39°15'37.3" LONG=(W) 80°21'59.9"
<b>BEND POINT (NAD'83)</b> LAT=(N) 39°15'37.6" LONG=(W) 80°21'59.2"
<b>BEND POINT UTM (NAD'83)</b> N. 4,345,871 E. 554,659
<b>WELL NO. 11HM BOTTOM HOLE</b> STATE PLANE COORDINATES (NORTH ZONE NAD 27) N. 281,199 E. 1,753,488
<b>BOTTOM HOLE (NAD'27)</b> LAT=(N) 39°16'07.6" LONG=(W) 80°22'14.5"
<b>BOTTOM HOLE (NAD'83)</b> LAT=(N) 39°16'07.9" LONG=(W) 80°22'13.8"
<b>BOTTOM HOLE UTM (NAD'83)</b> N. 4,346,803 E. 554,302

- "A"- FOOD LION LLC 8.61 AC±
- "B"- MAPLE VIEW APARTMENTS 5.72 AC±
- "C"- LOCUST VIEW LIMITED 4.12 AC±
- "D"- OAKMOUND ASSOCIATES 14.5 AC±
- "E"- MARY FRANCES LLC 9.76 AC±
- "F"- EQUITABLE GAS CO. 5.00 AC±
- "G"- ANTHONY J. MANCUSO ET AL 2.013 AC±

## REFERENCES

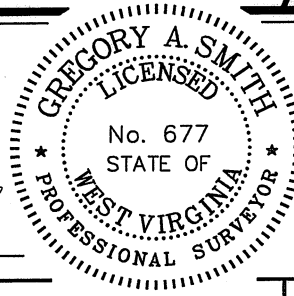


- NOTES ON SURVEY**
1. TIES TO WELLS, REFERENCES, AND CORNERS ARE BASED ON GRID NORTH FOR THE WV STATE PLANE COORDINATE SYSTEM NORTH ZONE NAD '27.
  2. LEASE BOUNDARY SHOWN HEREON TAKEN FROM DEED BOOK 70 PAGE 152 AND ADJOINING DEEDS.
  3. SURFACE OWNER AND ADJOINER INFORMATION TAKEN FROM THE ASSESSOR AND COUNTY CLERK RECORDS OF HARRISON COUNTY IN JULY, 2010
  4. WELL COORDINATES ESTABLISHED BY DGPS (SURVEY GRADE).



I THE UNDERSIGNED, HEREBY CERTIFY THAT THIS PLAT IS CORRECT TO THE BEST OF MY KNOWLEDGE AND BELIEF AND SHOWS ALL THE INFORMATION REQUIRED BY LAW AND THE REGULATIONS ISSUED AND PRESCRIBED BY THE DIVISION OF ENVIRONMENTAL PROTECTION.

P.S. 677 *Gregory A. Smith*



(+) DENOTES LOCATION OF WELL ON UNITED STATES TOPOGRAPHIC MAPS.  
 DATE FEBRUARY 1, 20 11  
 OPERATORS WELL NO. GOFF 11HM  
 API WELL NO. 47-033-05537H  
 STATE COUNTY PERMIT

MINIMUM DEGREE OF ACCURACY 1 / 200 FILE NO. 7129P11HM (314-25)  
 PROVEN SOURCE OF ELEVATION DGPS (SURVEY GRADE) SCALE 1" = 1000'

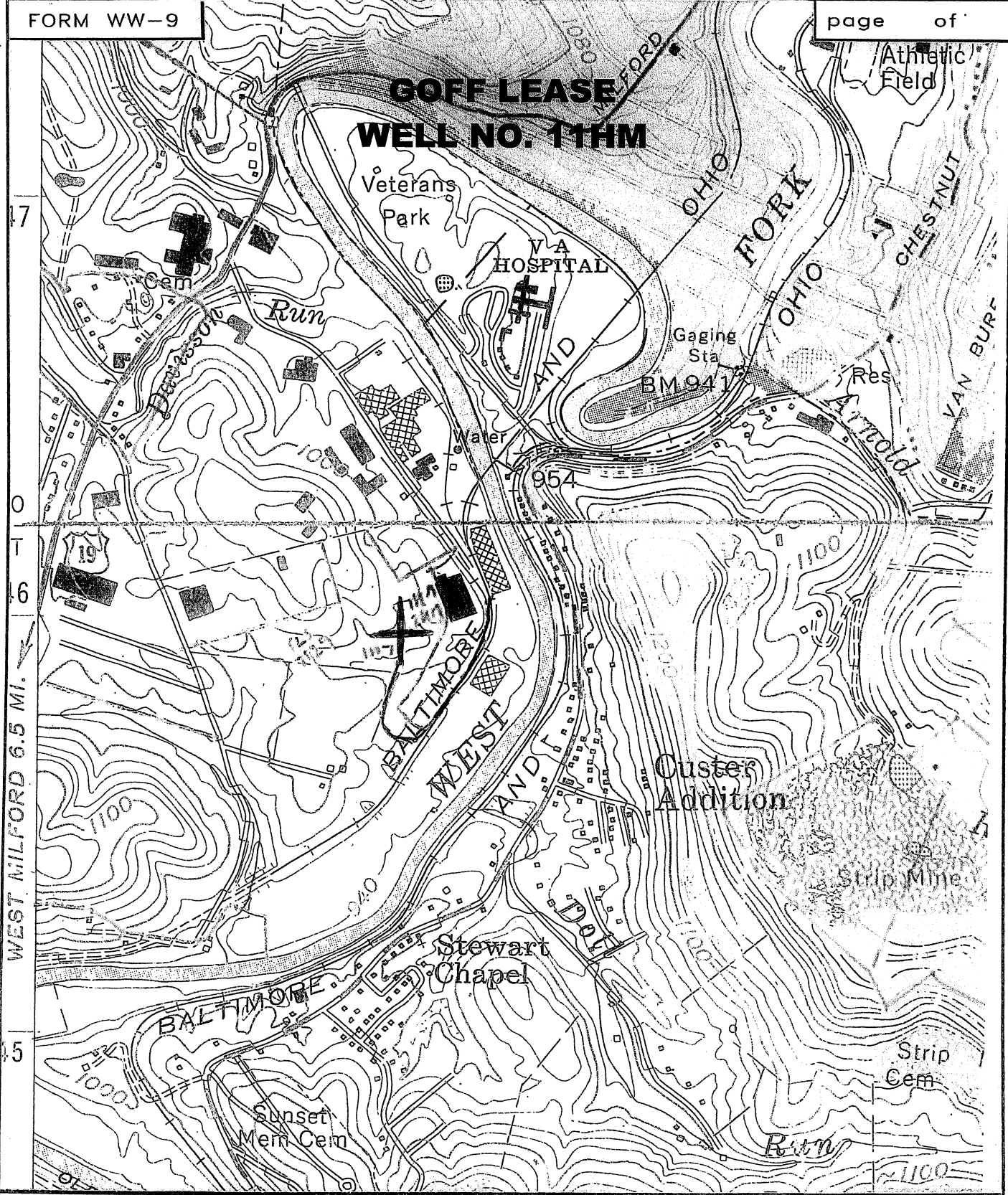
STATE OF WEST VIRGINIA  
 DIVISION OF ENVIRONMENTAL PROTECTION  
 OFFICE OF OIL AND GAS

WELL TYPE: OIL  GAS  INJECTION  WASTE DISPOSAL  IF "GAS" PRODUCTION  STORAGE  DEEP  SHALLOW

LOCATION: ELEVATION 997' WATERSHED WEST FORK RIVER  
 DISTRICT CLARK COUNTY HARRISON QUADRANGLE CLARKSBURG 7.5'  
 SURFACE OWNER LAURA GOFF DAVIS ACREAGE 161.22±  
 ROYALTY OWNER LAURA GOFF DAVIS, ET AL LEASE ACREAGE 400±  
 PROPOSED WORK: LEASE NO. \_\_\_\_\_  
 DRILL  CONVERT  DRILL DEEPER  REDRILL  FRACTURE OR STIMULATE  PLUG OFF OLD  
 FORMATION  PERFORATE NEW FORMATION  PLUG AND ABANDON  CLEAN OUT AND REPLUG  OTHER \_\_\_\_\_  
 PHYSICAL CHANGE IN WELL (SPECIFY) \_\_\_\_\_ TARGET FORMATION MARCELLUS  
 ESTIMATED DEPTH 6,900' TVD/ 11,800' MD

WELL OPERATOR PDC MOUNTAINEER, LLC DESIGNATED AGENT LARRY E. CARDER  
 ADDRESS 120 GENESIS BOULEVARD ADDRESS 120 GENESIS BOULEVARD  
BRIDGEPORT, WV 26330 BRIDGEPORT, WV 26330

COUNTY NAME PERMIT



WEST MILFORD 6.5 MI.



SMITH LAND SURVEYING  
P.O. BOX 150 GLENVILLE, WV. 26351

TOPO SECTION OF CLARKSBURG 7.5

FILE NO. 7129 DATE 2/1/11 SCALE 1"=1000'