

13,335' to Bottom Hole

10,581' to Top Hole

LATITUDE 39 - 12 - 30

LONGITUDE 80-27-30

7,812' to Top Hole

1,791' to Bottom Hole

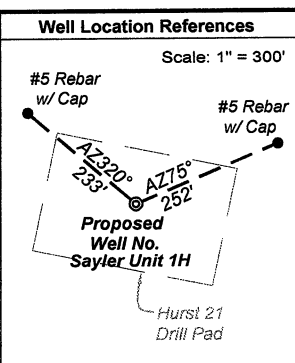
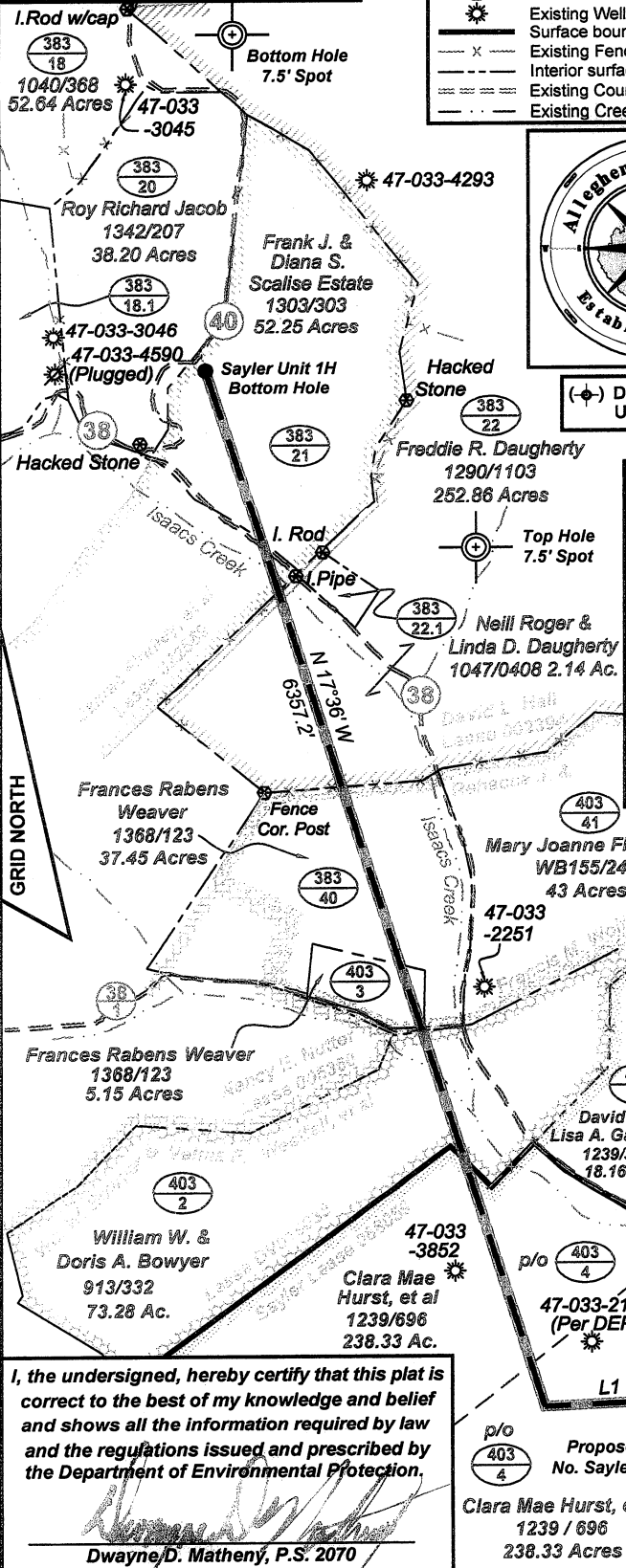
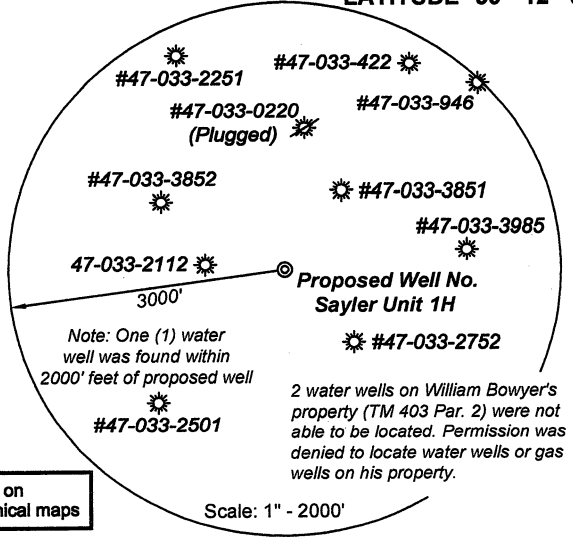
Antero Resources Well No. Saylor Unit 1H Antero Resources Appalachian Corporation

Legend

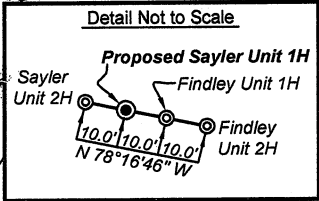
- ☉ Proposed gas well
- ⊗ Found monument, as noted
- ☼ Existing Well, as noted
- - - Surface boundary (approximate)
- x - Existing Fenceline
- - - Interior surface tracts (approx.)
- ==== Existing County Road
- - - Existing Creek or Drain



(☉) Denotes location of well on United States topographical maps



Notes:
West Virginia Coordinate System of 1927, North Zone based upon Differential GPS Measurements.
Well No. Saylor Unit 1H Top Hole coordinates are
N: 251,625.40 Latitude: 39°11'11.65"
E: 1,717,862.12 Longitude: 80°29'43.31"
Bottom Hole coordinates are
N: 257,646.62 Latitude: 39°12'10.86"
E: 1,715,108.11 Longitude: 80°30'19.14"
UTM Zone 17, NAD 1983
Top Hole Coordinates: N: 4,337,612.052m E: 543,598.261m
Bottom Hole Coordinates: N: 4,339,432.446m E: 542,728.675m
Plat orientation and corner and well references are based upon the grid north meridian.
Well location references are based upon the magnetic meridian.



Line Table

Line	Bearing	Distance
L1	S 87°21' W	833.1'
L2	S 03°47' W	998.3'
L3	S 34°51' W	1073.4'
L4	S 63°57' W	1343.2'
L5	S 77°42' W	632.3'
L6	N 43°01' W	1101.0'

I, the undersigned, hereby certify that this plat is correct to the best of my knowledge and belief and shows all the information required by law and the regulations issued and prescribed by the Department of Environmental Protection.

Dwayne D. Matheny
Dwayne D. Matheny, P.S. 2070

FILE NO: 89-33-U-11
DRAWING NO: Antero-Saylor Unit 1H
SCALE: 1" = 1000'
MINIMUM DEGREE OF ACCURACY: Submeter
PROVEN SOURCE OF ELEVATION: CORS Glenville, WV

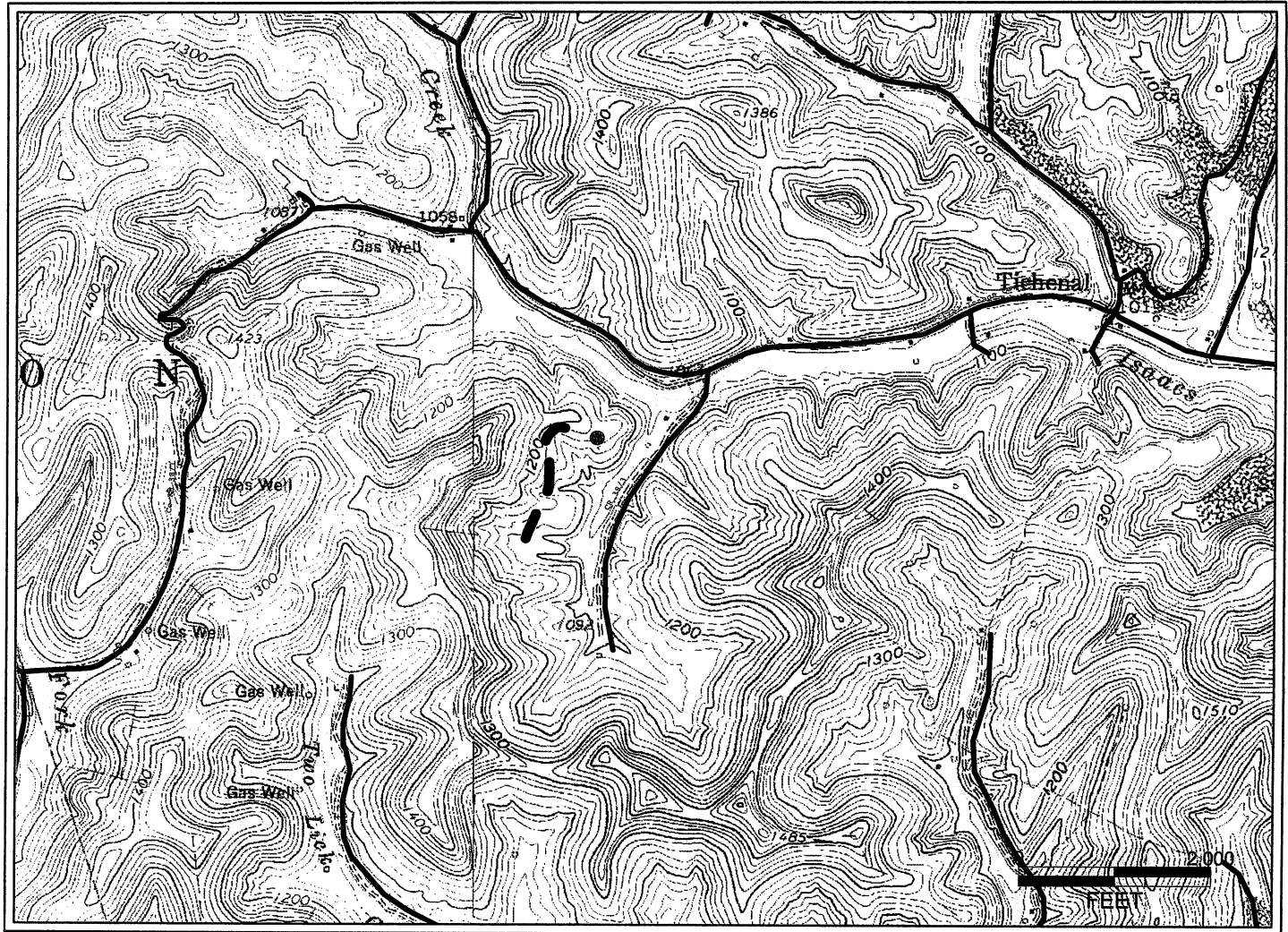
STATE OF WEST VIRGINIA
DEPARTMENT OF ENVIRONMENTAL PROTECTION
OFFICE OF OIL AND GAS

DATE: Sept. 16, 2011
OPERATOR'S WELL NO. Saylor Unit 1H
API WELL NO.:
047 - 033 - 05524
STATE COUNTY PERMIT

WELL TYPE: OIL GAS LIQUID INJECTION WASTE DISPOSAL
(IF GAS) PRODUCTION: STORAGE DEEP SHALLOW
LOCATION: ELEVATION: 1172' WATERSHED: Isacacs Creek
QUADRANGLE: West Milford DISTRICT: Union COUNTY: Harrison
SURFACE OWNER: Clara Mae Hurst, et al REBECCA J. & FRANCIS M. WOLFE; DAVID L. HALL Wm W. Bowyer & Velma F. Westfall, et al; 022569 ACREAGE: 238.33
OIL & GAS ROYALTY OWNER: Mary M. Saylor, et al/Leon F. Wilson, et al/Hallie McGahan; James Findley, et al LEASE NO: DV019038; 002394 255; 95
PROPOSED WORK: DRILL CONVERT DRILL DEEPER FRACTURE OR STIMULATE PLUG OFF OLD FORMATION
 PERFORATE NEW FORMATION OTHER PHYSICAL CHANGE IN WELL (SPECIFY) _____
 PLUG AND ABANDON CLEAN OUT AND REPLUG TARGET FORMATION: Marcellus Shale ESTIMATED DEPTH: TVD 7,100' MD 15,000'

WELL OPERATOR: Antero Resources Appalachian Corporation DESIGNATED AGENT: Diana Stamper - CT Corporation System
ADDRESS: 1625 17th Street ADDRESS: 5400 D Big Tyler Road
Denver, CO 80202 Charleston, WV 25313

01/27/2012



RECEIVED
 Office of Oil & Gas
 SEP 28 2011
 WV Department of
 Environmental Protection

Antero Resources Corporation
APPALACHIAN BASIN
Saylor Unit 1H
Harrison County
REMARKS QUADRANGLE: WEST MILFORD WATERSHED: ISAACS CREEK DISTRICT: UNION
January 9, 2009