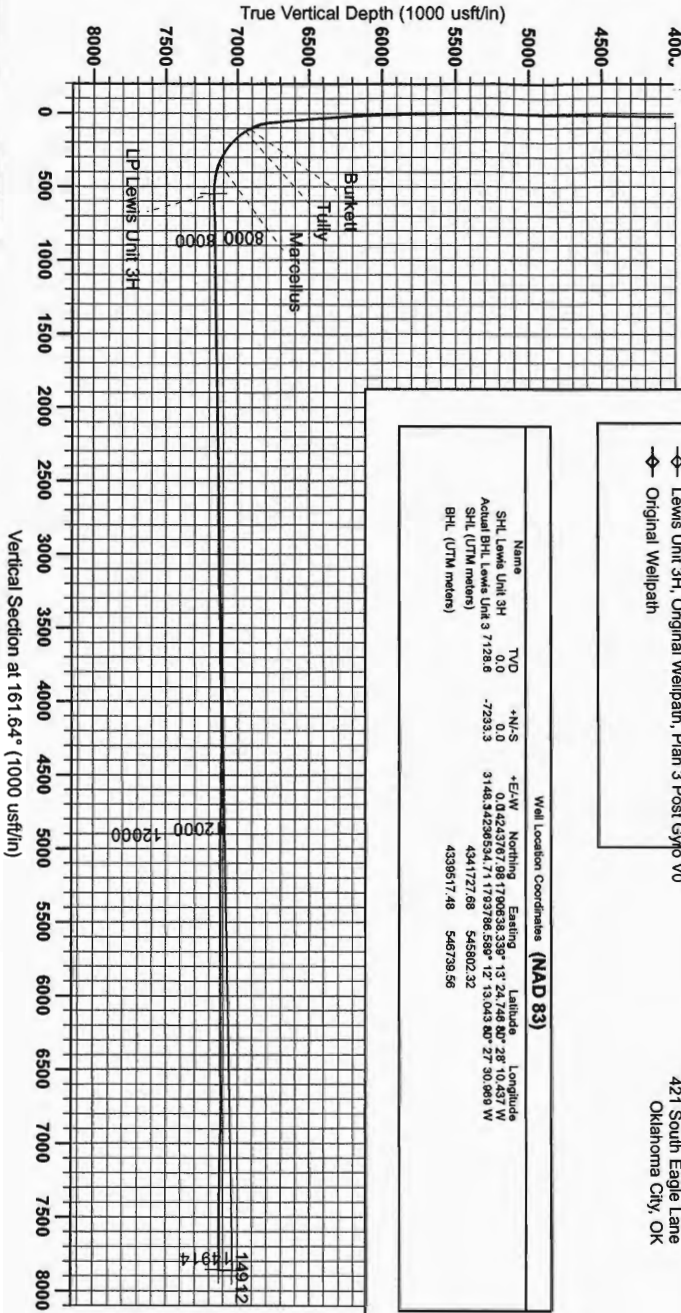




Antero Resources
 Lewis Unit 3H
 Harrison County West Virginia
 Northing: 14243767.98
 Easting: 1790638.33
 Original Wellpath



WELL DETAIL: Lewis Unit 3H

+N/S	+E/W	Northing	Ground Level	1988.0	Longitude	9:36
0.0	0.0	14243767.98	1790638.33	19° 24' 746 MB° 28' 10.437 W		

PROJECT DETAILS: Harrison County West Virginia
 Geodetic System: Universal Transverse Mercator (US Survey Feet)
 Datum: NAD 1983 (NADCON CONUS)
 Ellipsoid: Clarke 1866
 Zone: Zone 17N (64 W to 72 W)
 System Datum: Mean Sea Level

REFERENCE INFORMATION
 Coordinate (N/E) Reference: Well Lewis Unit 3H, Grid North
 1988.0
 1790638.33
 13° 24' 746 MB° 28' 10.437 W
 Meters Depth Reference: Lewis Unit 3H, Grid North
 1988.0
 1790638.33
 13° 24' 746 MB° 28' 10.437 W
 System Datum: Mean Sea Level

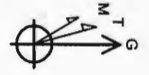
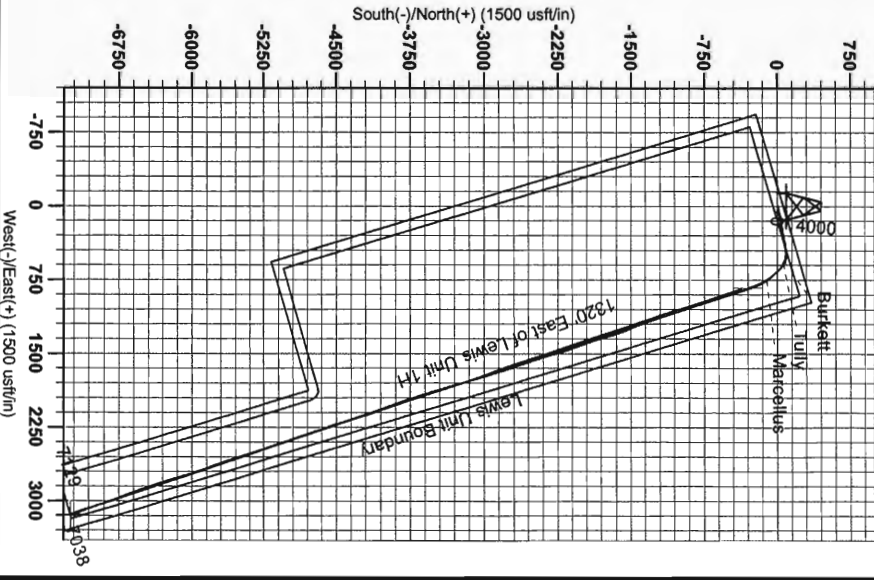
LEGEND

- ◊ Lewis Unit 3H, Original Wellpath, Plan 3 Post Gyro VO
- ◊ Original Wellpath

Scientific Drilling
 Genie Lightfoot
 9:36, July 18 2013
 Scientific Drilling
 421 South Eagle Lane
 Oklahoma City, OK

Well Location Coordinates (NAD 83)

Name	TVD	+N/S	+E/W	Northing	Easting	Latitude	Longitude
SHL Lewis Unit 3H	0.0	0.0	0.0	0.0	0.0	13° 24' 746 MB° 28' 10.437 W	
Actual BHL Lewis Unit 3	7128.8	-7233.3	3148.5	424296534.71	17939786.539	12° 13' 04.3 MB° 27' 30.069 W	
SHL (UTM meters)				4341727.68	545802.32		
BHL (UTM meters)				4339517.48	546739.56		



RECEIVED
 Office of Oil and Gas
 DEB 05 2013
 WV Department of Environmental Protection
 01/17/2014